



MADE EASY

India's Best Institute for IES, GATE & PSUs

GATE 2021

ELECTRONICS ENGINEERING

Questions & Solutions

Exam held on 07/02/2021



Scroll
down
to view

MADE EASY Delhi : 44-A/1, Kalu Sarai, New Delhi - 110016 | **Ph** : 011-45124612, 9958995830

• Delhi • Hyderabad • Noida • Bhopal • Jaipur • Lucknow • Indore • Pune • Bhubaneswar • Kolkata • Patna



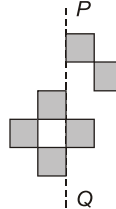
www.madeeasy.in

If you find any discrepancy in question or solution, kindly write us at : info@madeeasy.in mentioning stream, date of exam and session.

SECTION - A

GENERAL APTITUDE

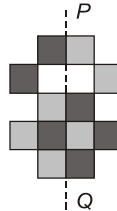
Q.1



The least number of squares that must be added so that the line $P-Q$ becomes the line of symmetry is _____.

- (a) 7 (b) 6
(c) 4 (d) 3

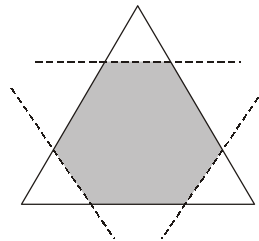
Ans. (b)



To make $P-Q$ as symmetric line, minimum number of square added = 6.

End of Solution

Q.2



Corners are cut from an equilateral triangle to produce a regular convex hexagon as shown in the figure above.

The ratio of the area of the regular convex hexagon to the area of the original equilateral triangle is

- (a) 5 : 6 (b) 4 : 5
(c) 2 : 3 (d) 3 : 4



MADE EASY

India's Best Institute for IES, GATE & PSUs*

Under the leadership of

Mr. B. Singh

Chairman & Managing Director



- Well Planned Curriculum
- Systematic Subject Sequence
- Comprehensive Study Materials

ADMISSION OPEN

ESE + GATE 2022

GATE 2022

- ✓ Classes by India's highly proficient and experienced top faculties.
- ✓ Similar teaching pedagogy in online and offline courses.
- ✓ Concept practice through workbooks and updated theory books.
- ✓ Thoroughly revised, updated study materials as per latest exam pattern.
- ✓ Systematic subject sequence and time bound completion of syllabus.
- ✓ Assessment of performance through subject-wise tests.
- ✓ Professionally managed, interactive classrooms and well equipped infrastructure.

LIVE CLASSES of MADE EASY Prime

Medium : Hindi + English

Morning Batch from 18th Feb, 2021

Time: 8.30 AM - 11.30 AM

Medium : English

Evening Batch from 25th Feb, 2021

Time: 5.30 PM - 8.30 PM

Scan to download app



android



iOS

☎ 8851176822, 9958995830
 🌐 www.madeeasyprime.com

OFFLINE CLASSES

Regular Batches

First Batch

from 22nd Feb, 2021

Second Batch

from 1st Mar, 2021

Third Batch

from 18th Mar, 2021

Weekend Batches

Commencing

from 21st Feb, 2021

MADE EASY Delhi

☎ 011-45124612, 9958995830
 🌐 www.madeeasy.in

Easy EMI
options available

Avail 10 % Discount till **28th Feb, 2021**
on ESE & GATE long term Online/Offline Courses

COVID 19 Security Features

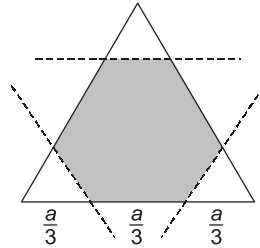
- Spacious classrooms that enable social distancing.
- Institute is fully sanitized and hygienic.

Corporate Office: 44-A/1, Kalu Sarai, Sarvapriya Vihar, Near Hauz Khas Metro Station, New Delhi-110016

MADE EASY Centres: Delhi | Hyderabad | Noida | Jaipur | Lucknow | Bhopal | Bhubaneswar | Pune | Indore | Patna | Kolkata

Admission open at all MADE EASY centres • For details, visit: www.madeeasy.in

Ans. (c)



Let the side of the two larger equilateral triangle = a

Then side of regular hexagon = $\left(\frac{a}{3}\right)$

Area of regular Hexagon = $6 \times \frac{\sqrt{3}}{4} \left(\frac{a}{3}\right)^2$

Area of triangle = $\frac{\sqrt{3}}{4} (a)^2$

Required ratio = $\frac{6\sqrt{3}}{4} \times \frac{a^2}{9} : \frac{\sqrt{3}}{4} a^2$

$6 : 9 = 2 : 3$

End of Solution

Q.3 p and q are positive integers and $\frac{p}{q} + \frac{q}{p} = 3$,

then, $\frac{p^2}{q^2} + \frac{q^2}{p^2} =$

(a) 3

(b) 9

(c) 11

(d) 7

Ans. (d)

Given, $\frac{p}{q} + \frac{q}{p} = 3$

Squaring both sides,

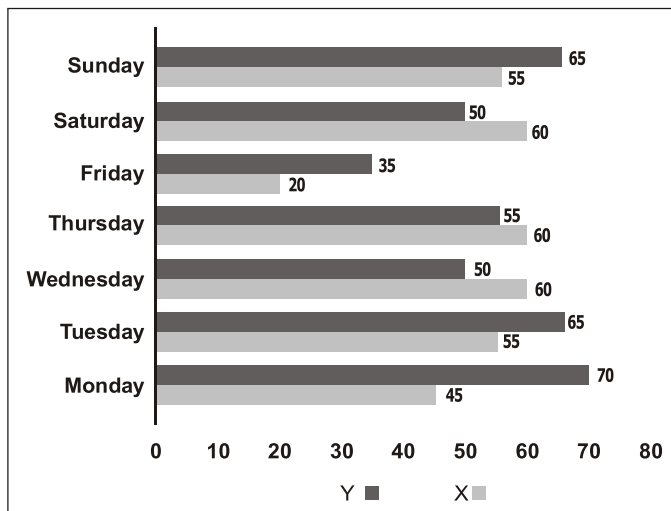
$$\left(\frac{p}{q} + \frac{q}{p}\right)^2 = 3^2$$

$$\Rightarrow \frac{p^2}{q^2} + \frac{q^2}{p^2} + 2 = 9$$

$$\Rightarrow \frac{p^2}{q^2} + \frac{q^2}{p^2} = 9 - 2 = 7$$

End of Solution

Q.4



The number of minutes spent by two students, X and Y, exercising every day in a given week are shown in the bar chart above.

The number of days in the given week in which one of the students spent a minimum of 10% more than the other student, on a given day, is

- (a) 4 (b) 7
(c) 5 (d) 6

Ans. (d)

- On Sunday, the percentage = $\frac{65 - 55}{55} \times 100 = 18.18\%$
- On Saturday, the percentage = $\frac{60 - 50}{50} \times 100 = 20\%$
- On Friday, the percentage = $\frac{35 - 20}{20} \times 100 = 75\%$
- On Thursday, the percentage = $\frac{60 - 55}{55} \times 100 = 9.09\%$
- On Wednesday, the percentage = $\frac{60 - 50}{50} \times 100 = 20\%$
- On Tuesday, the percentage = $\frac{65 - 55}{55} \times 100 = 18.18\%$
- On Monday, the percentage = $\frac{70 - 45}{45} \times 100 = 55.56\%$

Total six days are there when one of the students spent a minimum of 10% more than the other student.

End of Solution

Q.5 Given below are two statements and two conclusions.

Statement 1 : All purple are green.

Statement 2 : All black are green.

Conclusion I : Some black are purple.

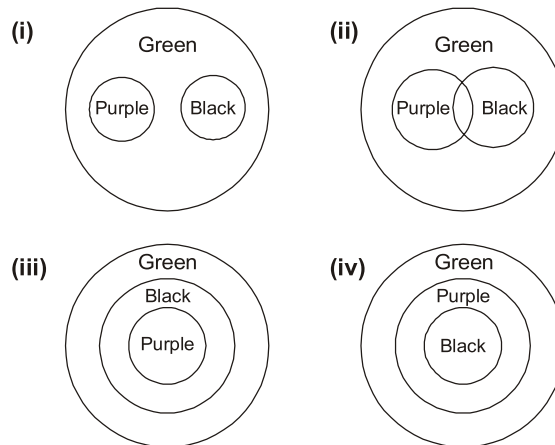
Conclusion II : No black is purple.

Based on the above statements and conclusions, which one of the following options is logically CORRECT?

- (a) Either conclusion I or II is correct.
- (b) Both conclusion I and II are correct.
- (c) Only conclusion I is correct.
- (d) Only conclusion II is correct.

Ans. (a)

Possible cases can be,



End of Solution

Q.6 Computers are ubiquitous. They are used to improve efficiency in almost all fields from agriculture to space exploration. Artificial intelligence (AI) is currently a hot topic. AI enables computers to learn, given enough training data. For humans, sitting in front of a computer for long hours can lead to health issues.

Which of the following can be deduced from the above passage?

- (i) Nowadays, computers are present in almost all places.
- (ii) Computers cannot be used for solving problems in engineering.
- (iii) For humans, there are both positive and negative effects of using computers.
- (iv) Artificial intelligence can be done without data.

- (a) (ii) and (iii)
- (b) (i), (iii) and (iv)
- (c) (i) and (iii)
- (d) (ii) and (iv)

Ans. (c)

Ubiquitous is the keyword to justify option (i). Positive and negative effect for humans justifies option (iii).

End of Solution

Q.7 The current population of a city is 11,02,500. If it has been increasing at the rate of 5% per annum, what was its population 2 years ago?

- (a) 9,92,500 (b) 10,00,000
(c) 9,95,006 (d) 12,51,506

Ans. (2)

$$1102500 = x \left(1 + \frac{5}{100}\right)^2$$

$$1102500 = x \left(\frac{21}{20}\right)^2$$

$$x = 10,00,000$$

End of Solution

Q.8 Nostalgia is to anticipation as _____ is to _____.

Which one of the following options maintains a similar logical relation in the above sentence?

- (a) Past, future (b) Future, past
(c) Future, present (d) Present, past

Ans. (a)

Nostalgia refers to a feeling, fondness and slight sadness thinking of past and anticipate is to predicting future.

End of Solution

Q.9 Consider the following sentences :

- (i) I woke up from sleep.
(ii) I woked up from sleep.
(iii) I was woken up from sleep.
(iv) I was wokened up from sleep.

Which of the above sentences are grammatically CORRECT?

- (a) (i) and (ii) (b) (ii) and (iii)
(c) (i) and (iv) (d) (i) and (iii)

Ans. (d)

Wake - Woke - Woken are three form of the verb.

Hence, option (i) and (iii) are correct.

End of Solution

Q.10 Consider a square sheet of side 1 unit. In the first step, it is cut along the main diagonal to get two triangles. In the next step, one of the cut triangles is revolved about its short edge to form a solid cone. The volume of the resulting cone, in cubic units, is _____.

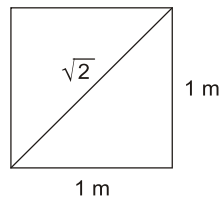
(a) $\frac{3\pi}{2}$

(b) 3π

(c) $\frac{\pi}{3}$

(d) $\frac{2\pi}{3}$

Ans. (c)



One of the triangle is revolved about its short side, resulting a cone

Hence,

$$r = 1, \quad H = 1$$

Volume of cone,

$$V = \frac{1}{3} \pi r^2 H = \frac{\pi}{3} (1)^2 (1)$$

$$V = \frac{\pi}{3}$$

End of Solution



SECTION - B

TECHNICAL

Q.1 A message signal having peak-to-peak value of 2 V, root mean square value of 0.1 V and bandwidth of 5 kHz is sampled and fed to a pulse code modulation (PCM) system that uses a uniform quantizer. The PCM output is transmitted over a channel that can support a maximum transmission rate of 50 kbps. Assuming that the quantization error is uniformly distributed, the maximum signal to quantization noise ratio that can be obtained by the PCM system (rounded off to two decimal places) is _____.

Ans. (30.72)

$$V_{p-p} = 2 \text{ V}$$

$$\text{Root MSQ}[m(t)] = 0.1 \text{ V} ; f_m = 5 \text{ kHz}$$

$$\text{Channel capacity, } C = 50 \text{ kbps}$$

$$\text{Max } \frac{S}{N_Q} = ?$$

Signal power, $S = \text{MSQ}[m(t)] = (0.1)^2 = 0.01$

$$C \geq R_b \Rightarrow 50 \text{ kbps} \geq n f_s$$

$\therefore f_s = NR = 2f_m = 10 \text{ kHz}$

$$n \leq 5 \Rightarrow n_{\max} = 5$$

$$N_Q = \frac{\Delta^2}{12}$$

$\therefore \Delta = \frac{V_{p-p}}{2^n}$

$$\Delta_{\min} = \frac{V_{p-p}}{2^{n_{\max}}} = \frac{2V}{2^5} = \frac{1}{16}$$

$$(N_Q)_{\min} = \frac{\Delta_{\min}^2}{12} = 3.25 \times 10^{-4}$$

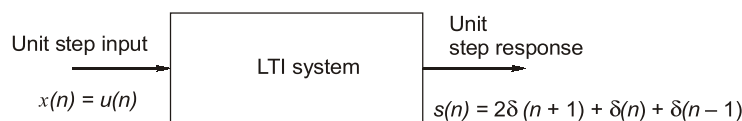
$$\left(\frac{S}{N_Q}\right)_{\max} = \frac{S}{(N_Q)_{\min}} = \frac{0.01}{3.25 \times 10^{-4}} = 30.72$$

End of Solution

Q.2 For a unit step input $u[n]$, a discrete-time LTI system produces an output signal $(2\delta[n+1] + \delta[n] + \delta[n-1])$

Let $y[n]$ be the output of the system for an input $\left[\left(\frac{1}{2}\right)^n u[n]\right]$. The value of $y[0]$ is _____.

Ans. (0)



The impulse response $h(n) = s(n) - s(n - 1)$

$$h(n) = 2\delta(n + 1) + \delta(n) + \delta(n - 1) - 2\delta(n) - \delta(n - 1) - \delta(n - 1 - 1)$$

$$= 2\delta(n + 1) + \delta(n) + \delta(n - 1) - 2\delta(n) - \delta(n - 1) - \delta(n - 2)$$

$$h(n) = 2\delta(n + 1) - \delta(n) - \delta(n - 2)$$

For input $x_1(n) = (1/2)^n u(n)$ then output $y_1(n) = x_1(n) * h(n)$

$$y_1(n) = \left(\frac{1}{2}\right)^n u(n) * [2\delta(n + 1) - \delta(n) - \delta(n - 2)]$$

$$y_1(n) = \left(\frac{1}{2}\right)^n u(n) * 2\delta(n + 1) - \left(\frac{1}{2}\right)^n u(n) * \delta(n) - \left(\frac{1}{2}\right)^n u(n) * \delta(n - 2)$$

$$y_1(n) = 2\left(\frac{1}{2}\right)^{n+1} u(n+1) - \left(\frac{1}{2}\right)^n u(n) - \left(\frac{1}{2}\right)^{n-2} u(n-2)$$

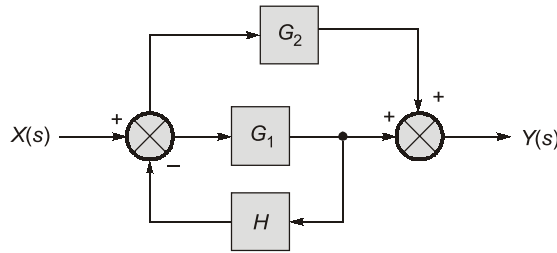
$$y_1(n)|_{n=0} = 2\left(\frac{1}{2}\right)^1 u(1) - \left(\frac{1}{2}\right)^0 u(0) - \left(\frac{1}{2}\right)^{-2} u(-2)$$

$$= 1 - 1$$

$$y_1(0) = 0$$

End of Solution

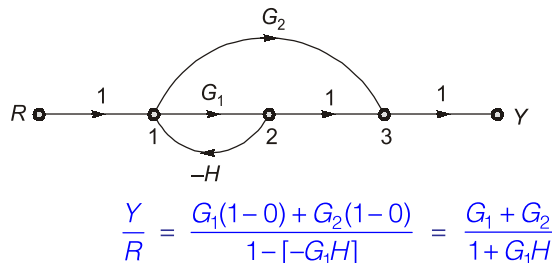
Q.3 The block diagram of a feedback control system is shown in the figure.



The transfer function $\frac{Y(s)}{X(s)}$ of the system is

- (a) $\frac{G_1 + G_2}{1 + G_1 H}$ (b) $\frac{G_1 + G_2 + G_1 G_2 H}{1 + G_1 H + G_2 H}$
- (c) $\frac{G_1 + G_2 + G_1 G_2 H}{1 + G_1 H}$ (d) $\frac{G_1 + G_2}{1 + G_1 H + G_2 H}$

Ans. (a)



End of Solution

- Q.4** Consider two 16-point sequence $x[n]$ and $h[n]$. Let the linear convolution of $x[n]$ and $h[n]$ be denoted by $y[n]$, while $z[n]$ denotes the 16-point inverse discrete Fourier transform (IDFT) of the product of the 16-point DFTs of $x[n]$ and $h[n]$. The value(s) of k for which $z[k] = y[k]$ is/are
- (a) $k = 0, 1, 2, \dots, 15$ (b) $k = 15$
(c) $k = 0$ and $k = 15$ (d) $k = 0$

Ans. (b)

If two ' N ' point signals $x(n)$ and $h(n)$ are convolving with each other linearly and circularly then

$$y(k) = z(k) \text{ at } k = N - 1$$

where,

$$y(n) = \text{Linear convolution of } x(n) \text{ and } h(n)$$

$$z(n) = \text{Circular convolution of } x(n) \text{ and } h(n)$$

Since,

$$N = 16 \text{ (Given)}$$

Therefore,

$$y(k) = z(k) \text{ at } k = N - 1 = 15$$

End of Solution

- Q.5** If $(1235)_x = (3033)_y$, where x and y indicate the bases of the corresponding numbers, then
- (a) $x = 7$ and $y = 5$ (b) $x = 8$ and $y = 6$
(c) $x = 6$ and $y = 4$ (d) $x = 9$ and $y = 7$

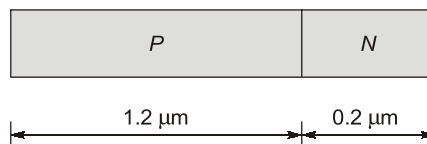
Ans. (b)

$$x^3 + 2x^2 + 3x + 5 = 3y^3 + 3y + 3$$

Option (b) will satisfy the equation.

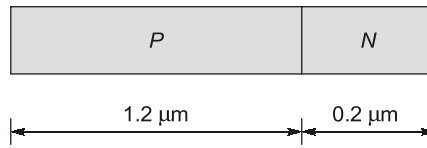
End of Solution

- Q.6** A silicon P - N junction is shown in the figure. The doping in the P region is $5 \times 10^{16} \text{ cm}^{-3}$ and doping in the N region is $10 \times 10^{16} \text{ cm}^{-3}$. The parameters given are
- Built-in voltage (Φ_{bi}) = 0.8 V
Electron charge (q) = $1.6 \times 10^{-19} \text{ C}$
Vacuum permittivity (ϵ_0) = $8.85 \times 10^{-12} \text{ F/m}$
Relative permittivity of silicon (ϵ_{si}) = 12



The magnitude of reverse bias voltage that would completely deplete one of the two regions (P or N) prior to the other (rounded off to one decimal place) is _____ V.

Ans. (8.239)



Given : $N_A = 5 \times 10^{16} \text{ cm}^{-3}$; $N_D = 10 \times 10^{16} \text{ cm}^{-3}$

Built-in potential, $\phi_{bi} = 0.8 \text{ V}$

Electron charge, $q = 1.6 \times 10^{-19} \text{ C}$

Vacuum permittivity, $\epsilon_0 = 8.85 \times 10^{-12} \text{ F/m} = 8.85 \times 10^{-14} \text{ F/cm}$

Relative permittivity silicon,
 $\epsilon_{si} = 12$

⇒ Doping on both sides is comparable, so smaller region would deplete first.

So, depletion region width on N-side = $x_n = 0.2 \mu\text{m}$

⇒ $x_n = 0.2 \times 10^{-4} \text{ cm}$

$$x_n = \sqrt{\frac{2\epsilon_{si}}{q} \left(\frac{N_A}{N_D}\right) \left(\frac{1}{N_A + N_D}\right) (\phi_{bi} + V_R)}$$

where, $V_R \rightarrow$ Magnitude of reverse bias potential

$$\Rightarrow 0.2 \times 10^{-4} = \sqrt{\frac{2 \times 12 \times 8.85 \times 10^{-14}}{1.6 \times 10^{-19}} \cdot \frac{5 \times 10^{16}}{10 \times 10^{16}} \cdot \frac{1}{(15 \times 10^{16})} (\phi_{bi} + V_R)}$$

⇒ $\phi_{bi} + V_R = 9.039$

⇒ $V_R = 9.039 - 0.8$

⇒ $V_R = 8.239 \text{ V}$

End of Solution

Q.7 An 8-bit unipolar (all analog output values are positive) digital-to-analog converter (DAC) has a full-scale voltage range from 0 V to 7.68 V. If the digital input code is 10010110 (the leftmost bit is MSB), then the analog output voltage of the DAC (rounded off to one decimal place) is _____ V.

Ans. (4.5)

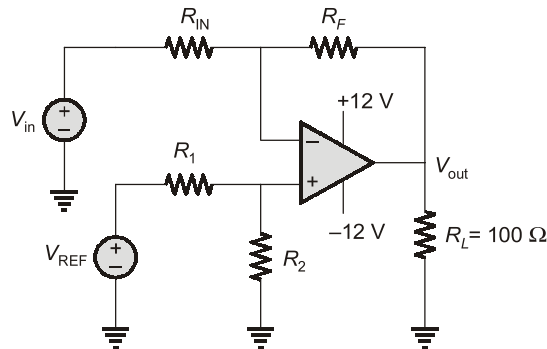
Given: $V_{ps} = 7.68 \text{ V}$
 $n = 8 \text{ bit}$

$$\text{Resolution } (k) = \frac{V_{FS}}{2^n - 1} = \frac{7.68}{2^8 - 1} = 0.03$$

Now, $V_{DAC} = k \times \{\text{Decimal equivalent}\}$
 $= 0.03 \times \{150\}$
 $= 4.5 \text{ V}$

End of Solution

Q.8 For the circuit with an ideal Op-Amp shown in the figure, V_{REF} is fixed.



If $V_{OUT} = 1$ Volt for $V_{IN} = 0.1$ Volt and $V_{OUT} = 6$ Volt for $V_{IN} = 1$ Volt, where V_{OUT} is measured across R_L connected at the output of this Op-Amp, the value of R_f/R_{IN} is

- (a) 3.825 (b) 5.555
(c) 2.860 (d) 3.285

Ans. (b)

$$V^- = V^+$$

$$\frac{V_{out} R_{in} + V_{in} R_f}{R_{in} + R_f} = \frac{V_{ref} R_2}{R_1 + R_2}$$

$$\frac{1 \times R_{in} + 0.1 \times R_f}{R_{in} + R_f} = \frac{V_{ref} R_2}{R_1 + R_2} \quad \dots(i)$$

$$\frac{6 R_{in} + 1 \times R_f}{R_{in} + R_f} = \frac{V_{ref} R_2}{R_1 + R_2} \quad \dots(ii)$$

Equate equation (i) and (ii),

$$1 \times R_{in} + 0.1 \times R_f = 6 \times R_{in} + 1 \times R_f$$

$$-5 R_{in} = 0.9 R_f$$

$$\therefore \frac{R_f}{R_{in}} = \frac{-5}{0.9} = -5.55$$

(According to the given data magnitude is taken)

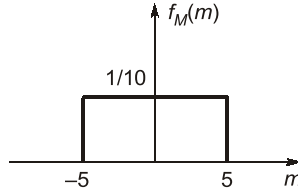
End of Solution

Q.9 A speech signal, band limited to 4 kHz, is sampled at 1.25 times the Nyquist rate. The speech samples, assumed to be statistically independent and uniformly distributed in the range -5 V to $+5$ V, are subsequently quantized in an 8-bit uniform quantizer and then transmitted over a voice-grade AWGN telephone channel. If the ratio of transmitted signal power to channel noise power is 26 dB, the minimum channel bandwidth required to ensure reliable transmission of the signal with arbitrarily small probability of transmission error (rounded off to two decimal places) is _____ kHz.

Ans. (9.25)

$$f_m = 4 \text{ kHz}$$

$$f_s = 1.25 \text{ NR} = 1.25 \times (2f_m) = 10 \text{ kHz}$$



$$n = 8 \text{ bits/sample and } \frac{S}{N} = 26 \text{ dB} = 10^{2.6}$$

For arbitrarily small probability of transmission error,

$$C \geq R_b \Rightarrow B \log_2 \left(1 + \frac{S}{N} \right) \geq n f_s$$

$$B \log_2(1 + 10^{2.6}) \geq 8 \times 10\text{K} \Rightarrow B \geq 9.25 \text{ kHz}$$

$$B_{\min} = 9.25 \text{ kHz}$$

End of Solution

Q.10 Consider a superheterodyne receiver tuned to 600 kHz. If the local oscillator feeds a 1000 kHz signal to the mixer, the image frequency (in integer) is _____ kHz.

Ans. (1400)

$$f_s = 600 \text{ kHz}$$

$$f_l = 1000 \text{ kHz}$$

$$f_{si} = ?$$

Default $f_l > f_s$

$$\text{IF} = f_l - f_s = 400 \text{ kHz}$$

$$f_{si} = f_s + 2\text{IF} = 600\text{K} + 800\text{K} = 1400 \text{ kHz}$$

End of Solution

Q.11 If the vectors $(1.0, -1.0, 2.0)$, $(7.0, 3.0, x)$ and $(2.0, 3.0, 1.0)$ and R^3 are linearly dependent, the value of x is _____.

Ans. (8)

$(1, -1, 2)$
 $(7, 3, x)$
 $(2, 3, 1)$ are linearly dependent when $x = ?$

$$\begin{vmatrix} 1 & -1 & 2 \\ 7 & 3 & x \\ 2 & 3 & 1 \end{vmatrix} = 0 \Rightarrow 1(3 - 3x) + 1(7 - 2x) + 2(15) = 0$$

$$\Rightarrow -5x = -40$$

$$x = 8$$

End of Solution

ESE 2021

**G.S &
Engineering
Aptitude
Online Classes**



Features:

- Full coverage of the syllabus to train the aspirants for every possible question.
- Classes will be conducted by experienced faculties.
- The course is designed keeping in mind the latest trends of the ESE paper.
- Lectures will help students to grasp the subject from the grass-root level.
- Emphasis will be given on objective questions solving approach according to the standard of exam.
- Lectures will be delivered in online recorded mode, thereby helping aspirants to access from anywhere and from any device using our user-friendly interface.
- This course will cover 8 GS subjects. Note: Engineering Mathematics and Reasoning Aptitude will not be covered in this course.

Streams:
CE, ME, EE & E&T

Duration:
200 Hours

Fee:
₹12000 +GST

Course will be active till the date of examination

Download **MADE EASY Prime** app




android



iOS

Helpline

 **8851176822, 9958995830**

 **info@madeeasyprime.com**



www.madeeasyprime.com

Q.12 Consider a carrier signal which is amplitude modulated by a single-tone sinusoidal message signal with a modulation index of 50%. If the carrier and one of the sidebands are suppressed in the modulated signal, the percentage of power saved (rounded off to one decimal place) is _____.

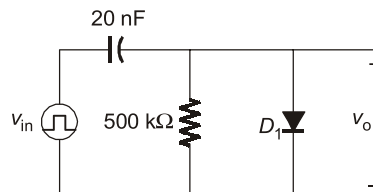
Ans. (94)

If carrier and one of the sidebands are suppressed, then % of power saved

$$\begin{aligned} \frac{\text{Power saved}}{\text{Total power}} &= \frac{P_c + \frac{P_c \mu^2}{4}}{P_c \left[1 + \frac{\mu^2}{2} \right]} = \frac{4 + \mu^2}{4 + 2\mu^2} \\ &= \frac{4 + (0.5)^2}{4 + 2 \times (0.5)^2} = 0.944 = 94.4\% \end{aligned}$$

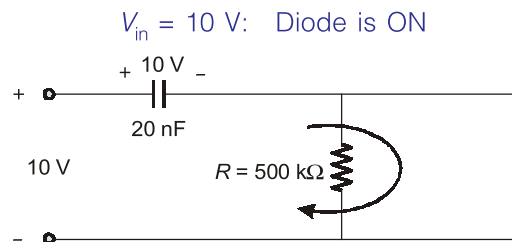
End of Solution

Q.13 An symmetrical periodic pulse train v_{in} of 10 V amplitude with on-time $T_{ON} = 1$ ms and off-time $T_{OFF} = 1$ μ s is applied to the circuit shown in the figure. The diode D_1 is ideal.



The difference between the maximum voltage and minimum voltage of the output waveform v_o (in integer) is _____ V.

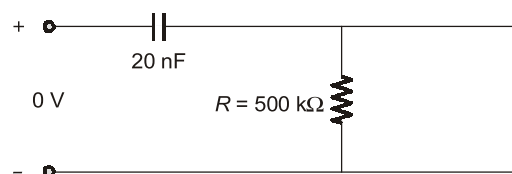
Ans. (10)



\therefore Capacitor charges upto 10 V,

$\therefore V_C = 10$ V

$V_{in} = 0$; Diode is OFF



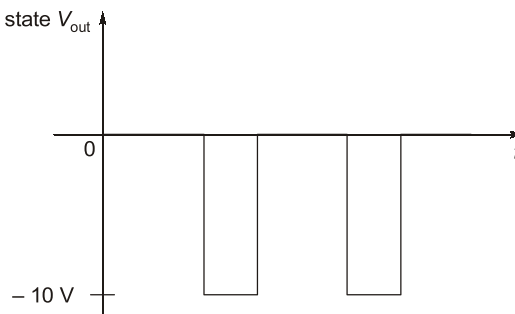
Discharging time constant = $R \times C$

$$= 10 \text{ m sec}$$

$$\tau_{\text{discharging}} \gg \tau_{\text{OFF}}$$

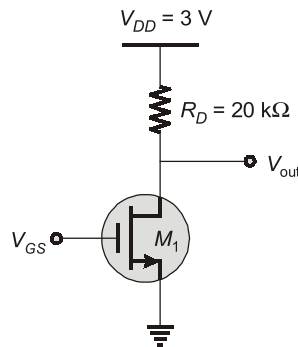
Capacitor discharges negligibly

$$\begin{aligned} \therefore V_C &= 10 \text{ V} \\ \text{In steady state, } V_C &= 10 \text{ V} \\ V_{\text{out}} &= V_{\text{in}} - V_C = V_{\text{in}} - 10 \text{ V} \\ \text{When } V_{\text{in}} &= 10 \text{ V} \\ \Rightarrow V_{\text{out}} &= 10 - 10 = 0 \text{ V} \\ V_{\text{in}} &= 10 \text{ V} \\ \Rightarrow V_{\text{out}} &= 0 - 10 = -10 \text{ V} \\ V_{\text{out(max)}} - V_{\text{out(min)}} &= 0 - (-10) = 10 \text{ V} \end{aligned}$$



End of Solution

- Q.14** For the transistor M_1 in the circuit shown in the figure, $\mu_n C_{ox} = 100 \mu\text{A/V}^2$ and $(W/L) = 10$, where μ_n is the mobility of electron, C_{ox} is the oxide capacitance per unit area, W is the width and L is the length.



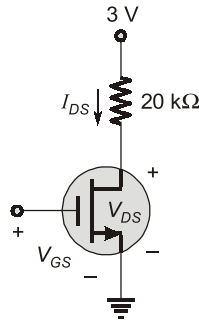
The channel length modulation coefficient is ignored. If the gate-to-source voltage V_{GS} is 1 V to keep the transistor at the edge of saturation, then the threshold voltage of the transistor (rounded off to one decimal place) is _____ V.

Ans. (0.5)

$$I_{DS} = \frac{\mu_n C_{ox}}{2} \times \frac{W}{L} (V_{GS} - V_T)^2$$

Given, $V_{GS} = 1 \text{ V}$

$$I_{DS} = \frac{1}{2} (1 - V_T)^2 \quad \dots(i)$$



$$V_{DS} = 3 - 20 \times I_{DS}$$

$$V_{DS} = 3 - \frac{20}{2}(1 - V_T)^2$$

$$V_{DS} = 3 - 10(1 - V_T)^2$$

MOSFET operates in saturation if

$$V_{DS} \geq V_{GS} - V_T$$

So, we take,

$$V_{DS} = V_{GS} - V_T$$

$$V_{GS} - V_T = 3 - 10(1 - V_T)^2$$

$$1 - V_T = 3 - 10(1 - V_T)^2$$

Let,

$$1 - V_T = x$$

$$3 - 10x^2 = x$$

$$10x^2 + x - 3x = 0$$

We get,

$$x = -\frac{1 \pm \sqrt{1+120}}{20}$$

$$x = -\frac{1 \pm 11}{20}$$

∴

$$x = 0.5 \text{ and } -0.6$$

$$x = 0.5$$

⇒

$$1 - V_T = 0.5$$

⇒

$$V_T = 0.5 \text{ V}$$

$$x = -0.6$$

⇒

$$1 - V_T = -0.6$$

⇒

$$V_T = 1.6 \text{ V}$$

But

$$V_{GS} > V_T$$

or

$$V_T < V_{GS}$$

i.e.,

$$V_T < 1$$

∴

$$V_T = 0.5 \text{ V}$$

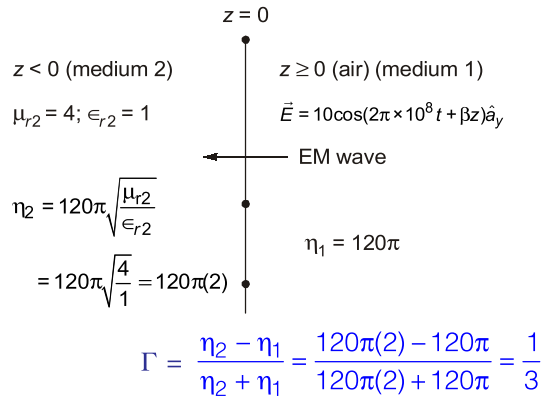
End of Solution

Q.15 Consider a rectangular coordinate system (x, y, z) with unit vectors \hat{a}_x, \hat{a}_y and \hat{a}_z . A plane wave traveling in the region $z \geq 0$ with electric field vector $E = 10\cos(2 \times 10^8 t + \beta z)\hat{a}_y$ is incident normally on the plane at $z = 0$, where β is the phase constant. The region $z \geq 0$ is in free space and the region $z < 0$ is filled with a lossless medium (permittivity $\epsilon = \epsilon_0$, permeability $\mu = 4\mu_0$, where $\epsilon_0 = 8.85 \times 10^{-12}$ F/m and $\mu_0 = 4\pi \times 10^{-7}$ H/m). The value of the reflection coefficient is

- (a) $\frac{1}{3}$ (b) $\frac{3}{5}$
(c) $\frac{2}{5}$ (d) $\frac{2}{3}$

Ans. (a)

Given $\vec{E} = 10\cos(2\pi \times 10^8 t + \beta z)\hat{a}_y$ for $z \geq 0$ having free space. For $z < 0$ medium has $\epsilon_{r2} = 1; \mu_{r2} = 4$.



End of Solution

Q.16 For an n -channel silicon MOSFET with 10 nm gate oxide thickness, the substrate sensitivity $\left(\frac{\partial V_T}{\partial |V_{BS}|} \right)$ is found to be 50 mV/V at a substrate voltage $|V_{BS}| = 2$ V, where

V_T is the threshold voltage of the MOSFET. Assume that, $|V_{BS}| \gg 2\Phi_B$, where $q\Phi_B$ is the separation between the Fermi energy level E_F and the intrinsic level E_i in the bulk. Parameters given are

- Electron charge (q) = 1.6×10^{-19} C
 Vacuum permittivity (ϵ_0) = 8.85×10^{-12} F/m
 Relative permittivity of silicon (ϵ_{si}) = 12
 Relative permittivity of oxide (ϵ_{ox}) = 4

The doping concentration of the substrate is

- (a) $4.37 \times 10^{15} \text{ cm}^{-3}$ (b) $7.37 \times 10^{15} \text{ cm}^{-3}$
 (c) $9.37 \times 10^{15} \text{ cm}^{-3}$ (d) $2.37 \times 10^{15} \text{ cm}^{-3}$

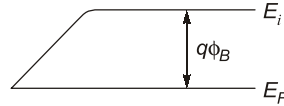
Ans. (d)

Given, N-channel MOSFET

$$t_{ox} = 10 \text{ nm} = 10 \times 10^{-7} \text{ cm}$$

$$\frac{\partial V_T}{\partial |V_{BS}|} = 50 \text{ mV/V}, \quad |V_{BS}| = 2 \text{ V}$$

$$q = 1.6 \times 10^{-19} \text{ C} \quad |V_{BS}| \gg 2\phi_B$$



$$\epsilon_o = 8.85 \times 10^{-14} \text{ F/cm}$$

$$\epsilon_{r_{si}} = 12$$

$$\epsilon_{r_{ox}} = 4$$

Threshold voltage, including body effect,

$$V_T = \phi_{ms} + \frac{\sqrt{2\epsilon_{si} q N_A (2\phi_B - V_{BS})}}{C_{ox}} + 2\phi_B$$

In question, we need, $|V_{BS}| = |V_{SB}|$

$$\therefore V_T = \phi_{ms} + \frac{\sqrt{2\epsilon_{si} q N_A (2\phi_B + V_{SB})}}{C_{ox}} + 2\phi_B$$

$$\Rightarrow V_T = \phi_{ms} + \frac{\sqrt{2\epsilon_{si} q N_A (2\phi_B + |V_{SB}|)}}{C_{ox}} + 2\phi_B$$

$$\therefore \frac{\partial V_T}{\partial |V_{BS}|} = 0 + \frac{\sqrt{2\epsilon_{si} q N_A}}{C_{ox}} \cdot \frac{1}{2\sqrt{2\phi_B + |V_{SB}|}} + 0$$

$$\Rightarrow 50 \times 10^{-3} = \frac{\sqrt{2 \times 8.85 \times 10^{-14} \times 12 \times 1.6 \times 10^{-19} N_A}}{\epsilon_{ox} / t_{ox}} \cdot \frac{1}{2\sqrt{|V_{SB}|}}$$

$$\Rightarrow \left(\frac{50 \times 10^{-3} \times 4 \times 8.85 \times 10^{-14}}{10 \times 10^{-7}} \right)^2 = \frac{2 \times 8.85 \times 10^{-14} \times 12 \times 1.6 \times 10^{-19}}{4 \times 2}$$

$$[\because |V_{SB}| \gg 2\phi_B]$$

$$\Rightarrow N_A = 7.375 \times 10^{15} \text{ cm}^{-3}$$

End of Solution

Q.17 A standard air-filled rectangular waveguide with dimension $a = 8 \text{ cm}$, $b = 4 \text{ cm}$, operates at 3.4 GHz . For the dominant mode of wave propagation, the phase velocity of the signal is v_p . The value (rounded off to two decimal places) of v_p/c , where c denotes the velocity of light, is _____.

Ans. (1.198)

$$f_{c10} = \frac{c}{2a} = \frac{3 \times 10^8}{2(8 \times 10^{-2})} = 1.875 \text{ GHz}$$

Guide phase velocity,

$$V_p = \frac{c}{\sqrt{1 - \left(\frac{f_{c10}}{f}\right)^2}}$$

$$\frac{V_p}{c} = \frac{1}{\sqrt{1 - \left(\frac{f_{c10}}{f}\right)^2}} = \frac{1}{\sqrt{1 - \left(\frac{1.875}{3.4}\right)^2}} = 1.198$$

End of Solution

- Q.18** A box contains the following three coins,
I. A fair coin with head on one face and tail on the other face.
II. A coin with heads on both the faces.
III. A coin with tails on both the faces.

A coin is picked randomly from the box and tossed. Out of the two remaining coins in the box, one coin is then picked randomly and tossed. If the first toss results in a head, the probability of getting a head in the second toss is

- (a) $\frac{1}{2}$ (b) $\frac{2}{5}$
(c) $\frac{1}{3}$ (d) $\frac{2}{3}$

Ans. (c)

Let

$P(H_2)$ = Probability of getting head in second toss

$P(H_1)$ = Probability of getting head in first toss

$$P\left(\frac{H_2}{H_1}\right) = \frac{P(H_2 \cap H_1)}{P(H_1)}$$

$$P(H_1) = \frac{1}{3} \times \frac{1}{2} + \frac{1}{3} \times 1 + \frac{1}{3} \times 0 = \frac{1}{2}$$

To get head in second toss when head came in first toss, following cases can be made

1. Fair coin :

$$\text{Both head coin} = \frac{1}{3} \times \frac{1}{2} \times \frac{1}{2} \times 1 = \frac{1}{12}$$

$$\text{Both tail coin} = \frac{1}{3} \times \frac{1}{2} \times \frac{1}{2} \times 0 = 0$$

2. Both head coin :

$$\text{Fair coin} = \frac{1}{3} \times 1 \times \frac{1}{2} \times \frac{1}{2} = \frac{1}{12}$$

$$\text{Both tail coin} = 0$$

$$\therefore P(H_2 \cap H_1) = \frac{1}{12} + \frac{1}{12} = \frac{1}{6}$$

$$\therefore P(H_2/H_1) = \frac{1/6}{1/2} = \frac{1}{3}$$

End of Solution

Q.19 In a high school having equal number of boy students and girl students, 75% of the students study Science and the remaining 25% students study Commerce. Commerce students are two times more likely to be a boy than are Science students. The amount of information gained in knowing that a randomly selected girl student studies Commerce (rounded off to three decimal places) is _____ bits.

Ans. (3.32)

Given, $P(S) = \frac{1}{2}$ and $P(B) = \frac{1}{2}$

$$P(C) = \frac{1}{4} \text{ and } P(S) = \frac{3}{4}$$

Let probability of selected science student is a boy is $P(B/S) = x$

Given that Commerce students are two time more likely to be a boy than are Science students.

Then, probability of selected Commerce student is a boy

$$P\left(\frac{B}{C}\right) = 2x$$

We have to find probability of randomly selected girl studies Commerce i.e.

$$P\left(\frac{C}{G}\right) = \frac{P(C \cap G)}{P(G)} = \frac{P(C)P(G/C)}{P(G)}$$

$$P\left(\frac{C}{G}\right) = \frac{\frac{1}{4} \times P\left(\frac{G}{C}\right)}{\frac{1}{2}} \quad \dots(i)$$

To find $P(G/C)$, first we have to find $P(B/C)$.

The probability of selected student is a boy

$$P(B) = P(S) P(B/S) + P(C) \times P(B/C)$$

$$\frac{1}{2} = \frac{3}{4} \times x + \frac{1}{4} \times 2x$$

$$\Rightarrow x = \frac{2}{5}$$

Then, $P(B/C) = 2x = \frac{4}{5}$

We know that,

$$P\left(\frac{B}{C}\right) + P\left(\frac{G}{C}\right) = 1$$

$$P\left(\frac{G}{C}\right) = 1 - \frac{4}{5} = \frac{1}{5}$$

From equation (i),
$$P\left(\frac{C}{G}\right) = \frac{1}{4} \times \frac{1}{\frac{1}{5}} = \frac{1}{10}$$

The amount of information gained in knowing that a randomly selected girl studies

Commerce
$$I\left(\frac{C}{G}\right) = \log_2 \frac{1}{P\left(\frac{C}{G}\right)}$$

$$= \log_2 10 = 3.32$$

End of Solution

Q.20 A real 2×2 non-singular matrix A with repeated eigenvalue is given as

$$A = \begin{bmatrix} x & -3.0 \\ 3.0 & 4.0 \end{bmatrix}$$

where x is a real positive number. The value of x (rounded off to one decimal place) is _____.

Ans. (10)

$$A = \begin{bmatrix} x & -3 \\ 3 & 4 \end{bmatrix}$$

Characteristic equation

$$|A - \lambda I| = \begin{vmatrix} x - \lambda & -3 \\ 3 & 4 - \lambda \end{vmatrix} = 0$$

$$\Rightarrow \lambda^2 - (4 + x)\lambda + (4x + 9) = 0$$

Roots are repeating

$$\Rightarrow b^2 - 4ac = 0$$

$$(4 + x^2) - 4(4x + 9) = 0$$

$$16 + x^2 + 8x - 16x - 20 = 0$$

$$x = 10$$

$$\Rightarrow x^2 - 8x + 20 = 0$$

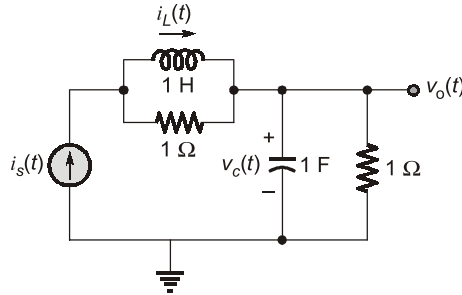
$$x = \frac{8 \pm \sqrt{64 + 80}}{2} = \frac{8 \pm 12}{2} = -2, 10$$

Since, x is positive

$$\therefore x = 10$$

End of Solution

Q.21 The electrical system shown in the figure converts input source current $i_s(t)$ to output voltage $v_o(t)$.



Current $i_L(t)$ in the inductor and voltage $v_c(t)$ across the capacitor are taken as the state variables, both assumed to be initially equal to zero, i.e., $i_L(0) = 0$ and $v_c(0) = 0$. The system is

- (a) completely observable but not state controllable
- (b) completely state controllable as well as completely observable
- (c) neither state controllable nor observable
- (d) completely state controllable but not observable

Ans. (c)

$$\begin{aligned} i_s &= v_i + v_c \\ \therefore v_i &= -v_c + i_s \\ v_L &= L i_L \\ v_L &= (i_s - i_L) \\ \therefore L i_L &= i_s - i_L \\ \therefore i_L &= -i_L + i_s \\ v_o &= v_c \end{aligned}$$

$$X = \begin{bmatrix} -1 & 0 \\ 0 & -1 \end{bmatrix} X + \begin{bmatrix} 1 \\ 2 \end{bmatrix} U$$

$$Y = [0 \quad 1] X + [0] U$$

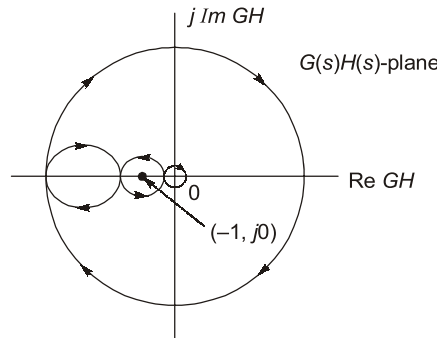
$$A = -I$$

$$Q_c = [B \quad AB] = \begin{bmatrix} 1 & -1 \\ 1 & -1 \end{bmatrix} \Rightarrow |Q_c| = 0$$

$$Q_o = [C^T \quad A^T C^T] = \begin{bmatrix} 0 & 0 \\ 1 & -1 \end{bmatrix} \Rightarrow |Q_o| = 0$$

End of Solution

Q.22 The complete Nyquist plot of the open-loop transfer function $G(s)H(s)$ of a feedback control system is shown in the figure.



If $G(s)H(s)$ has one zero in the right-half of the s -plane, the number of poles that the closed-loop system will have in the right-half of the s -plane is

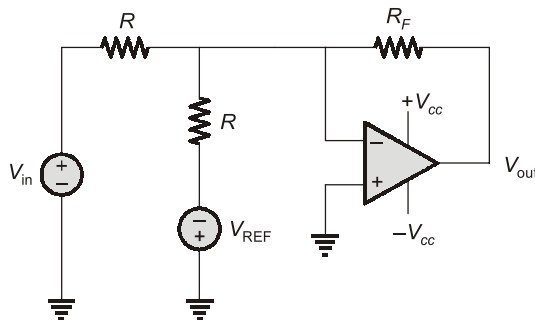
- (a) 4
- (b) 0
- (c) 3
- (d) 1

Ans. (*)

The given Nyquist plot is not matched according to the data given in the question.

End of Solution

Q.23 Consider the circuit with an ideal Op-Amp shown in the figure.



Assuming $|V_{IN}| \ll |V_{CC}|$ and $|V_{REF}| \ll |V_{CC}|$, the condition at which V_{OUT} equals to zero is

- (a) $V_{IN} = 0.5 V_{REF}$
- (b) $V_{IN} = 2 + V_{REF}$
- (c) $V_{IN} = 2 V_{REF}$
- (d) $V_{IN} = V_{REF}$

Ans. (d)

For ideal op-amp, $V^- = V^+ = 0$

KCL at node V^- :

$$\frac{V_{in}-0}{R} + \frac{(-V_{ref}-0)}{R} + \frac{V_{out}-0}{R_F} = 0$$

$$\frac{V_{out}}{R_F} = \frac{1}{R}(V_{ref} - V_{in})$$

$$V_{out} = \frac{R_F}{R}(V_{ref} - V_{in})$$

We want,

⇒

⇒

$$\begin{aligned} V_{\text{out}} &= 0 \\ V_{\text{ref}} - V_{\text{in}} &= 0 \\ V_{\text{in}} &= V_{\text{ref}} \end{aligned}$$

End of Solution

Q.24 A sinusoidal message signal having root mean square value of 4 V and frequency of 1 kHz is fed to a phase modulator with phase deviation constant 2 rad/volt. If the carrier signal is $c(t) = 2\cos(2\pi \times 10^6 t)$, the maximum instantaneous frequency of the phase modulated signal (rounded off to one decimal place) is _____ Hz.

Ans. (1011313.7)

Given sinusoidal message signal → $V_{\text{rms}} = 4 \text{ V}$

$$f_m = 1 \text{ kHz}$$

$$V_{\text{peak}} = \sqrt{2} \times V_{\text{rms}} = \sqrt{2} \times 4 \text{ V}$$

$$m(t) = 4\sqrt{2} \sin 2\pi \times 10^3 t$$

$$K_p = 2 \text{ rad/volt}$$

$$c(t) = 2\cos 2\pi \times 10^6 t$$

$$(f_i)_{\text{max}} = f_c + \frac{K_p}{2\pi} \left[\frac{d}{dt} m(t) \right]_{\text{max}}$$

$$\frac{d}{dt} m(t) = 4\sqrt{2} \times (2\pi \times 10^3) \cos 2\pi \times 10^3 t$$

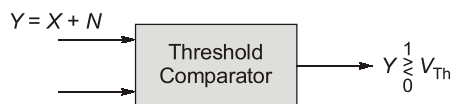
$$\left[\frac{d}{dt} m(t) \right]_{\text{max}} = 4\sqrt{2} \times 2\pi \times 10^3$$

$$(f_i)_{\text{max}} = 10^6 + \frac{2}{2\pi} (4\sqrt{2} \times 2\pi \times 10^3) = 1011313.7 \text{ Hz}$$

End of Solution

Q.25 Consider a polar non-return to zero (NRZ) waveform using +2 V and -2 V for representing binary '1' and '0' respectively, is transmitted in the presence of additive zero-mean white Gaussian noise with variance 0.4 V^2 . If the a priori probability of transmission of a binary '1' is 0.4, the optimum threshold voltage for a maximum a posteriori (MAP) receiver (rounded off to two decimal places) is _____ V.

Ans. (0.0405)



$$H_1 : X = +2 \text{ V}$$

$$H_0 : X = -2 \text{ V}$$

$$\text{Var}[N] = \sigma_n^2 = 0.4 \text{ V}^2$$

$$E[N] = 0$$

$$P(1) = 0.4$$

⇒

$$P(0) = 0.6$$

Opt V_{Th} by using MAP theorem

$$\frac{V_{Th}[a_1 - a_2]}{\sigma^2} - \frac{a_1^2 - a_2^2}{2\sigma^2} = \ln \frac{P(0)}{P(1)}$$

$$H_1 : a_1 = E[2 + N] = E[2] + E[N] = 2$$

$$H_0 : a_2 = -2 \text{ V} = E[-2 + N] = E[-2] + E[N] = -2$$

$$\sigma^2 = \text{Var}[Y] = \text{Var}[X + N]$$

$$= \text{Var}[X] + \text{Var}[N] = 0 + 0.4 = 0.4$$

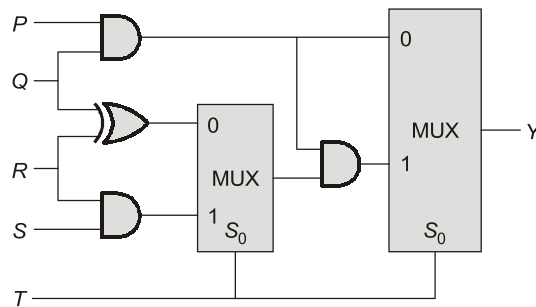
$$\frac{V_{Th}[2 + 2]}{0.4} - \frac{4 - 4}{2 \times 0.4} = \ln \frac{0.6}{0.4}$$

$$V_{Th} = \frac{0.4}{4} \ln \frac{0.6}{0.4} = 0.0405$$

$$\text{Opt } V_{Th} = 0.0405 \text{ Volts}$$

End of Solution

Q.26 The propagation delays of the XOR gate, AND gate and multiplexer (MUX) in the circuit shown in the figure are 4 ns, 2 ns and 1 ns, respectively.

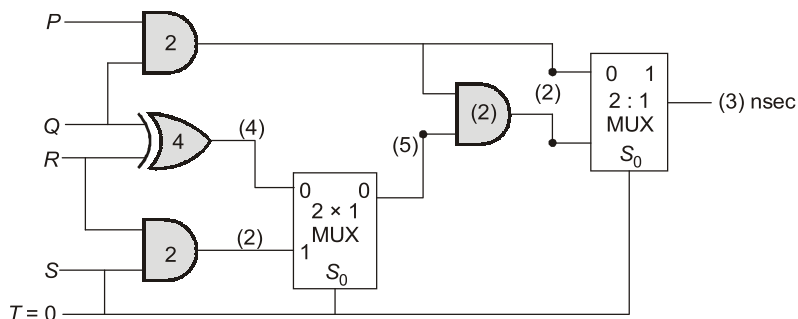


If all the inputs P , Q , R , S and T are applied simultaneously and held constant, the maximum propagation delay of the circuit is

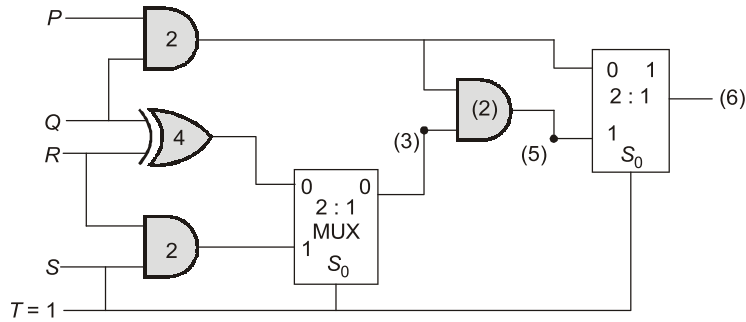
- (a) 3 ns
- (b) 5 ns
- (c) 6 ns
- (d) 7 ns

Ans. (c)

For $T = 0$



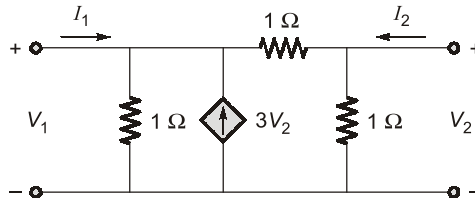
For $T = 1$



∴ Maximum propagation delay for the circuit is 6ns.

End of Solution

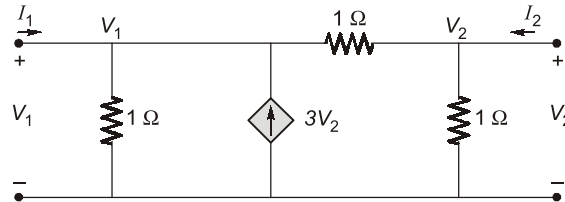
Q.27 Consider the two-port network shown in the figure.



The admittances parameters, in Siemens, are

- (a) $y_{11} = 2, y_{12} = -4, y_{21} = -4, y_{22} = 2$
- (b) $y_{11} = 2, y_{12} = -4, y_{21} = -4, y_{22} = 3$
- (c) $y_{11} = 2, y_{12} = -4, y_{21} = -1, y_{22} = 2$
- (d) $y_{11} = 1, y_{12} = -2, y_{21} = -1, y_{22} = 3$

Ans. (c)



Write KCL at V_1

$$I_1 = \frac{V_1}{1} + \frac{V_1 - V_2}{1} - 3V_2$$

$$I_1 = 2V_1 - 4V_2 \quad \dots \text{(i)}$$

Write KCL at V_2

$$I_2 = \frac{V_2}{1} + \frac{V_2 - V_1}{1}$$

$$I_2 = -V_1 + 2V_2 \quad \dots \text{(ii)}$$

$$[Y] = \begin{bmatrix} 2 & -4 \\ -1 & 2 \end{bmatrix} \text{S}$$

End of Solution



MADE EASY

India's Best Institute for IES, GATE & PSUs

ESE 2021 Preliminary Examination Online Test Series

34 Tests

2206 Questions

Combined Package of
ESE 2020 + ESE 2021 (Pre)
also available : 68 Tests

Streams: CE, ME, EE , E&T

- Quality questions as per standard and pattern of ESE.
- Includes tests of Paper-I (GS & Engg. Aptitude) and Paper-II (Technical)
- Fully explained and well illustrated solutions.
- Due care taken for accuracy.
- Comprehensive performance analysis report.



ESE 2021 Prelims Offline Test Series

Starting from 15th April, 2021

More details will be uploaded shortly at our website

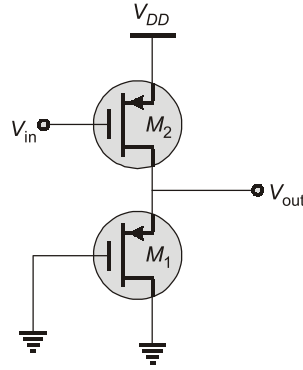
Technical Queries Helpline :  9818098817, 011-45124612

Enroll now



www.onlinetestseriesmadeeasy.in

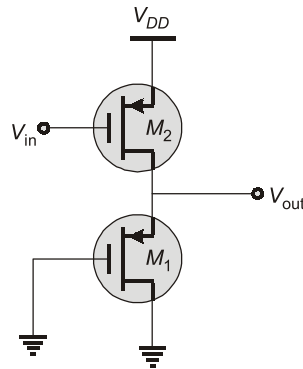
Q.28 In the circuit shown in the figure, the transistors M_1 and M_2 are operating in saturation. The channel length modulation coefficients of both the transistors are non-zero. The transconductance of the MOSFETs M_1 and M_2 are g_{m1} and g_{m2} , respectively, and the internal resistance of the MOSFETs M_1 and M_2 are r_{o1} and r_{o2} , respectively.



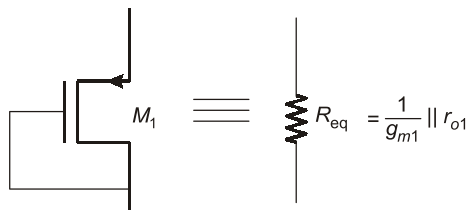
Ignoring the body effect, the AC small signal voltage gain $\left(\frac{\partial V_{out}}{\partial V_{in}}\right)$ of the circuit is

- (a) $-g_{m1}\left(\frac{1}{g_{m2}}\parallel r_{o1}\parallel r_{o2}\right)$ (b) $-g_{m2}\left(\frac{1}{g_{m1}}\parallel r_{o1}\parallel r_{o2}\right)$
 (c) $-g_{m2}\left(\frac{1}{g_{m1}}\parallel r_{o2}\right)$ (d) $-g_{m2}(r_{o1}\parallel r_{o2})$

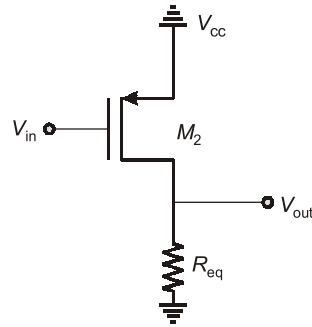
Ans. (b)
MOSFET M_2 acts as common source amplifier.



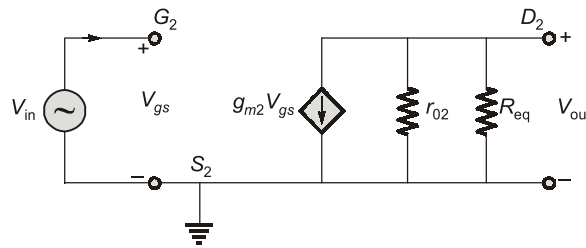
Drain to gate connected MOSFET M_1 acts as load.



For given circuit, AC equivalent is as shown.



Replace M_2 with small signal model



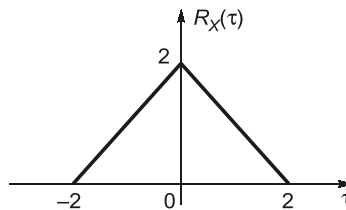
$$\frac{V_{out}}{V_{in}} = \frac{-g_{m2} V_{gs} (r_{o2} \parallel R_{eq})}{V_{gs}}$$

$$A_V = -g_{m2} \left(r_{o2} \parallel \frac{1}{g_{m1}} \parallel r_{o1} \right)$$

Hence, option (b) is correct.

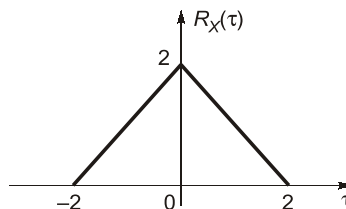
End of Solution

Q.29 The autocorrelation function $R_X(\tau)$ of a wide-sense stationary random process $X(t)$ is shown in the figure.



The average power of $X(t)$ is _____.

Ans. (2)



Average power $[X(t)] = R_X(0) = 2$

End of Solution

- Q.30** A digital transmission system uses a (7, 4) systematic linear Hamming code for transmitting data over a noisy channel. If three of the message-codeword pairs in this code ($m_i ; c_i$), where c_i is the codeword corresponding to the i^{th} message m_i , are known to be (1100 ; 0101100), (1110 ; 0011110) and (0110 ; 1000110), then which of the following is a valid codeword in this code?
- (a) 0110100 (b) 1101001
(c) 0001011 (d) 1011010

Ans. (c)

Given codewords:

$$\left. \begin{aligned} C_1 &= 0101100 \\ C_2 &= 0011110 \\ C_3 &= 1000110 \end{aligned} \right\}$$

in given above codewords, first $n - k = 3$ bits are parity bits and last $K = 4$ bits are message bits.

Given is (7, 4) systematic linear hamming code. For a linear code, sum of two codewords belong to the code is also a codeword belonging to the code.

$$C_1 \oplus C_2 = 0110010 = C_4$$

$$C_2 \oplus C_3 = 1011000 = C_5$$

$$C_1 \oplus C_3 = 1101010 = C_6$$

$$C_3 \oplus C_4 = 1110100 = C_7$$

Based on codewords C_6 and C_7 options (a) and (d) will incorrect.

Given codewords in the form of $\Rightarrow \underbrace{P_1 \ P_2 \ P_3}_{\text{Parity bits}} \ \underbrace{d_1 \ d_2 \ d_3 \ d_4}_{\text{Message bits}}$

$$\text{From observation } \Rightarrow P_1 = d_1 \oplus d_2 \oplus d_4$$

$$P_2 = d_2 \oplus d_3 \oplus d_4$$

$$P_3 = d_1 \oplus d_2 \oplus d_3$$

From given options, option (c) only satisfying above relations.

So, that option (c) will be correct.

End of Solution

- Q.31** Consider the vector field $\vec{F} = \hat{a}_x(4y - c_1z) + \hat{a}_y(4x + 2z) + \hat{a}_z(2y + z)$ in a rectangular coordinate system (x, y, z) with unit vectors $\hat{a}_x, \hat{a}_y,$ and \hat{a}_z . If the field \vec{F} is irrotational (conservative), then the constant c_1 (in integer) is _____.

Ans. (0)

$$\nabla \times \vec{F} = 0$$

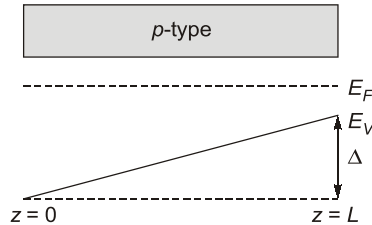
$$\begin{vmatrix} i & j & k \\ \frac{\partial}{\partial x} & \frac{\partial}{\partial y} & \frac{\partial}{\partial z} \\ 4y - c_1z & 4x + 2z & 2y + z \end{vmatrix} = 0$$

$$= i(2 - 2) - j(0 + c_1) + k(4 - 4) = 0$$

$$c_1 = 0$$

End of Solution

- Q.32** The energy band diagram of a p -type semiconductor bar of length L under equilibrium condition (i.e, the Fermi energy level E_F is constant) is shown in the figure. The valence band E_V is sloped since doping is non-uniform along the bar. The difference between the energy levels of the valence band at the two edges of the bar is Δ .



If the charge of an electron is q , then the magnitude of the electric field developed inside this semiconductor bar is

- (a) $\frac{2\Delta}{qL}$ (b) $\frac{3\Delta}{2qL}$
(c) $\frac{\Delta}{2qL}$ (d) $\frac{\Delta}{qL}$

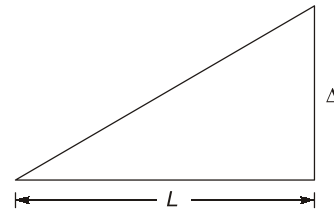
Ans. (d)

The built-in electric field is due to non-uniform doping (the semiconductor is under equilibrium)

$$E = \frac{1}{q} \frac{dE_V}{dx}$$

$$= \frac{1}{q} \frac{\Delta}{L}$$

$$= \frac{\Delta}{qL}$$



End of Solution

- Q.33** Consider the differential equation given below :

$$\frac{dy}{dx} + \frac{x}{1-x^2}y = x\sqrt{y}$$

The integrating factor of the differential equation is

- (a) $(1-x^2)^{-1/4}$ (b) $(1-x^2)^{-3/4}$
(c) $(1-x^2)^{-3/2}$ (d) $(1-x^2)^{-1/2}$

Ans. (a)

$$\frac{dy}{dx} + \frac{x}{1-x^2}y = x\sqrt{y}, \text{ I.F.} = ?$$

Divided by \sqrt{y}

$$\frac{1}{\sqrt{y}} \frac{dy}{dx} + \frac{x}{1-x^2} \sqrt{y} = x$$

$$2 \frac{du}{dx} + \frac{x}{1-x^2} u = x$$

Let

$$x\sqrt{y} = u$$

$$\frac{1}{2\sqrt{y}} \frac{dy}{dx} = \frac{du}{dx}$$

$$\Rightarrow \frac{du}{dx} + \frac{x}{2(1-x^2)}u = \frac{x}{2} \rightarrow \text{lines diff. equ.}$$

$$\text{I.F} = e^{\int \frac{x}{2(1-x^2)} dx} = e^{-\frac{1}{4} \log(1-x^2)} = e^{\log(1-x^2) \frac{-1}{4}}$$

$$\text{I.F} = \frac{1}{(1-x^2)^{\frac{1}{4}}}$$

End of Solution

Q.34 Two continuous random variables X and Y are related as

$$Y = 2X + 3$$

Let σ_X^2 and σ_Y^2 denote the variance of X and Y , respectively. The variances are related as

(a) $\sigma_Y^2 = 25\sigma_X^2$

(b) $\sigma_Y^2 = 5\sigma_X^2$

(c) $\sigma_Y^2 = 2\sigma_X^2$

(d) $\sigma_Y^2 = 4\sigma_X^2$

Ans. (d)

$$Y = 2X + 3$$

$$\text{Var} [Y] = E[(Y - \bar{Y})^2]$$

$$E[Y] = \bar{Y} = 2\bar{X} + 3$$

$$\text{Var} [Y] = E[(2X + 3 - 2\bar{X} - 3)^2]$$

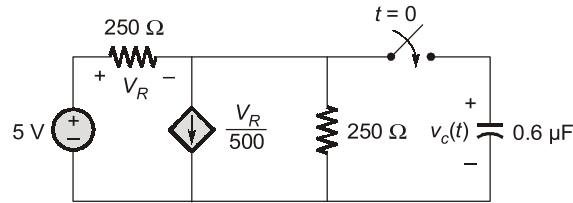
$$= E[4(X - \bar{X})^2]$$

$$= 4 \cdot E[(X - \bar{X})^2]$$

$$\sigma_y^2 = 4 \cdot \sigma_x^2$$

End of Solution

Q.35 In the circuit shown in the figure, the switch is closed at time $t = 0$, while the capacitor is initially charged to -5 V (i.e., $v_c(0) = -5$ V).



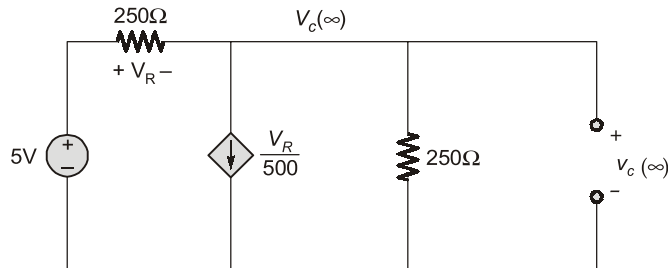
The time after which the voltage across the capacitor becomes zero (rounded off to three decimal places) is _____ ms.

Ans. (0.1386)

$$v_c(0^-) = -5V$$

$$v_c(0^+) = -5V$$

$t \rightarrow \infty$, capacitor acts as a O.C.

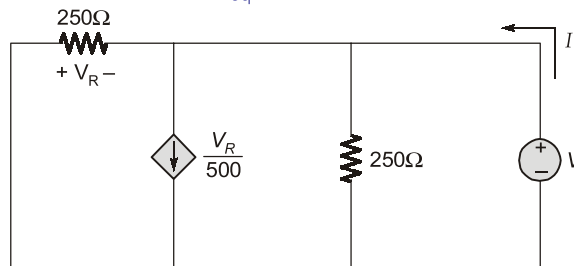


Write KCL at node

$$\frac{V_c(\infty) - 5}{250} + \frac{V_R}{500} + \frac{V_c(\infty)}{250} = 0$$

$$V_c(\infty) = \frac{5}{3} \text{ Volts}$$

Time constant (τ) = $R_{eq}C$.



$$I = \frac{V}{250} + \frac{V_R}{500} + \frac{V}{250}$$

$$V_R = -V$$

$$I = \frac{V}{250} - \frac{V}{500} + \frac{V}{250}$$

$$\frac{V}{I} = \frac{500}{3} \Omega; R_{eq} = \frac{500}{3} \Omega$$

$$\tau = \frac{500}{3} \times 0.6 \mu = 0.1 \times 10^{-3}$$

$$v_c(t) = v_c(\infty) + (v_c(0) - v_c(\infty))e^{-t/\tau}$$

$$v_c(t) = \frac{5}{3} + \left(-5 - \frac{5}{3}\right)e^{-t/0.1 \times 10^{-3}}$$

$$0 = \frac{5}{3} - \frac{20}{3}e^{-10000t}$$

$$t = 0.1386 \text{ m sec}$$

End of Solution

Q.36 Addressing of a $32 \text{ K} \times 16$ memory is realized using a single decoder. The minimum number of AND gates required for the decoder is

- (a) 2^8 (b) 2^{19}
(c) 2^{15} (d) 2^{32}

Ans. (c)

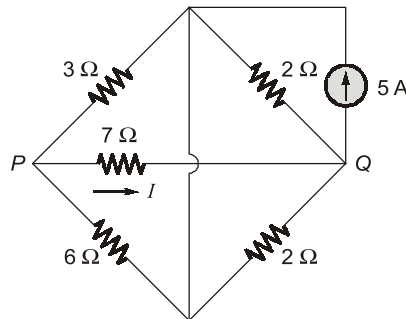
For $N \times 2^N$, decoder, there are 2^N AND gates required at output.

$$\therefore 32\text{K} \times 16 = 2^5 \times 2^{10} \times 16 = 2^{15} \times 16$$

$\therefore 2^{15}$ AND gates required to realize the given memory address.

End of Solution

Q.37 Consider the circuit shown in the figure.



The current I flowing through the 7Ω resistor between P and Q (rounded off to one decimal place) is _____ A.

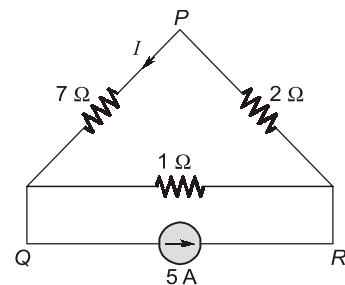
Ans. (0.5)

Redraw the circuit,

$$3\Omega \parallel 6\Omega = 2\Omega$$

$$2\Omega \parallel 2\Omega = 1\Omega$$

$$I = 5 \times \frac{1}{10} = 0.5\text{A}$$



End of Solution



ESE 2021

Mains Exam Conventional Batches

Mode: Live/Online & Offline

Batches commencing from
1st Week of April, 2021

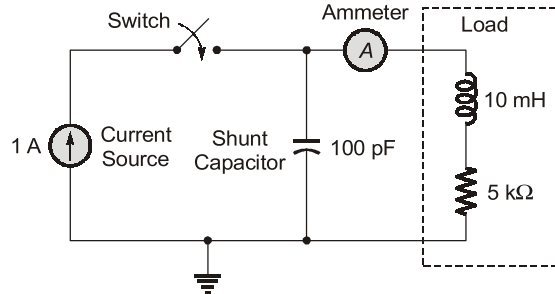
Duration
75 days

Total 275-300
Teaching hours

Streams:
CE, ME, EE, E&T

**More Details will
be updated shortly
at our website**

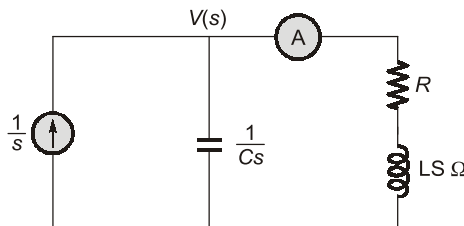
Q.38 The circuit in the figure contains a current source driving a load having an inductor and a resistor in series, with a shunt capacitor across the load. The ammeter is assumed to have zero resistance. The switch is closed at time $t = 0$.



Initially, when the switch is open, the capacitor is discharged and the ammeter reads zero ampere. After the switch is closed, the ammeter reading keeps fluctuating for some time till it settles to a final steady value. The maximum ammeter reading that one will observe after the switch is closed (rounded off to two decimal places) is _____ A.

Ans. (1.44)

Apply Laplace transform,



$$\frac{1}{s} = \frac{V(s)}{1/Cs} + \frac{V(s)}{R + Ls}$$

$$\frac{1}{s} = V(s) \left[Cs + \frac{1}{R + Ls} \right]$$

$$V(s) = \frac{(1/s)}{Cs + \frac{1}{R + Ls}}$$

$$V(s) = \frac{(1/s)(R + Ls)}{LCs^2 + RCs + 1}$$

$$I(s) = \frac{(1/s)(R + Ls)}{LCs^2 + RCs + 1} \cdot \frac{1}{(R + Ls)}$$

$$I(s) = \frac{1/LC}{s \left(s^2 + \frac{R}{L}s + \frac{1}{LC} \right)}$$

$$L = 10 \text{ mH}; C = 100 \text{ pF}; R = 5 \times 10^3 \text{ } \Omega$$

$$\xi = \frac{R}{2} \sqrt{\frac{C}{L}} = \frac{5 \times 10^3}{2} \sqrt{\frac{100 \times 10^{-12}}{10 \times 10^{-3}}} = 0.25$$

$$\text{Max. over shoot} = e^{-\pi\xi/\sqrt{1-\xi^2}} = 0.44$$

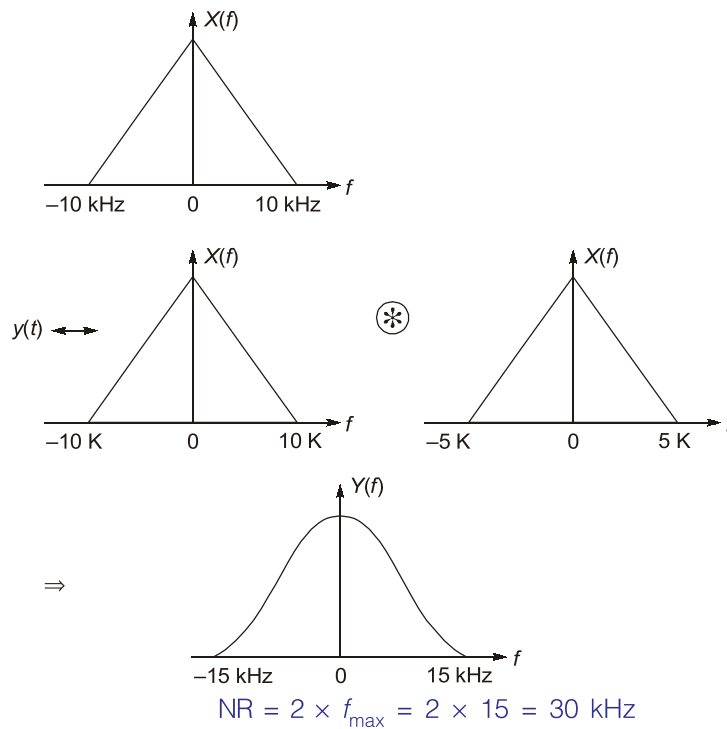
$$\begin{aligned} \text{Maximum value} &= \text{Steady state} + \text{Max. overshoot} \\ &= 1 + 0.44 \\ &= 1.44 \text{ A} \end{aligned}$$

End of Solution

Q.39 Consider a real-valued base-band signal $x(t)$, band limited to 10 kHz. The Nyquist rate for the signal $y(t) = x(t)x\left(1 + \frac{t}{2}\right)$ is

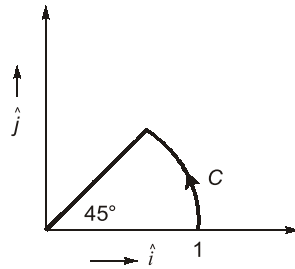
- (a) 15 kHz
- (b) 30 kHz
- (c) 20 kHz
- (d) 60 kHz

Ans. (b)



End of Solution

Q.40 The vector function $\vec{F}(r) = -x\hat{i} + y\hat{j}$ is defined over a circular arc C shown in the figure.



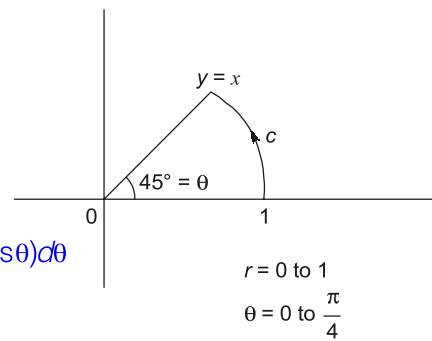
The line integral of $\int_C \vec{F}(r) \cdot d\vec{r}$ is

- (a) $\frac{1}{4}$
(c) $\frac{1}{3}$

- (b) $\frac{1}{2}$
(d) $\frac{1}{6}$

Ans. (b)

$$\begin{aligned}\vec{F} &= -xi + yj \\ \int_C \vec{F} \cdot d\vec{r} &= \int_C -xdx + ydy \\ &= \int_{\theta=0}^{45^\circ} (-\cos\theta(-\sin\theta) + \sin\theta\cos\theta)d\theta \\ \int_{\theta=0}^{\pi/4} \sin 2\theta d\theta &= -\frac{\cos 2\theta}{2} \Big|_0^{\pi/4} \\ &= -\frac{1}{2}[0 - 1] = \frac{1}{2}\end{aligned}$$



End of Solution

Q.41 Consider the integral

$$\oint_C \frac{\sin(x)}{x^2(x^2 + 4)} dx$$

where C is a counter-clockwise oriented circle defined as $|x - i| = 2$. The value of the integral is

- (a) $\frac{\pi}{8} \sin(2i)$
(c) $\frac{\pi}{4} \sin(2i)$

- (b) $-\frac{\pi}{4} \sin(2i)$
(d) $-\frac{\pi}{8} \sin(2i)$

Ans. (*)

$$\oint_c \frac{\sin x}{x^2(x^2 + 4)} dx, \quad c: |x - i| = 2$$

Poles are given by $x^2 = 0$ and $x^2 + 4 = 0$

↓

⇒ $x = 0$ is a pole of order '2'
 $x = 2i$ are simple nodes

$x = 0$ lies inside 'c'

$x = 2i$ lies inside 'c'

$x = -2i$ lies outside 'c'

$$\text{Res}_0 = \frac{1}{(2-1)} \lim_{x \rightarrow 0} \frac{d}{dz} \left[(x-0)^2 \frac{\sin x}{x^2(x^2 + 4)} \right]$$

$$= \lim_{x \rightarrow 0} \frac{(x^2 + 4)\cos x - \sin x(2x)}{(x^2 + 4)^2} = \frac{1}{4}$$

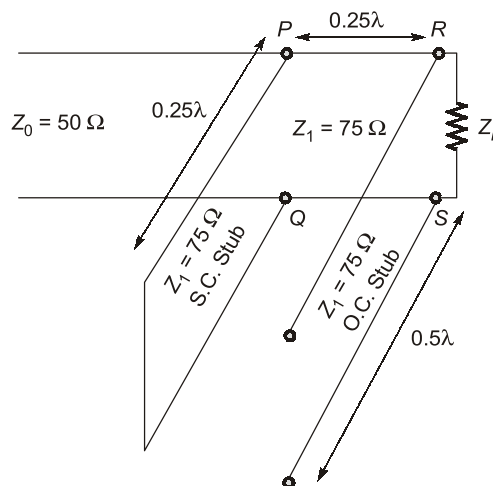
$$\text{Res}_{2i} = \lim_{x \rightarrow 2i} (x - 2i) \frac{\sin x}{x^2(x - 2i)(x + 2i)} = \frac{\sin(2i)}{(-4)(4i)}$$

By CRT

$$\oint_c f dx = 2\pi i [\text{Res}_0 + \text{Res}_{2i}] = 2\pi i \left[\frac{1}{4} + \frac{\sin(2i)}{-16} \right]$$

End of Solution

- Q.42** The impedance matching network shown in the figure is to match a lossless line having characteristic impedance $Z_0 = 50 \Omega$ with a load impedance Z_L . A quarter-wave line having a characteristic impedance $Z_1 = 75 \Omega$ is connected to Z_L . Two stubs having characteristic impedance of 75Ω each are connected to this quarter-wave line. One is a short-circuited (S.C.) stub of length 0.25λ connected across PQ and the other one is an open-circuited (O.C.) stub of length 0.5λ connected across RS .



The impedance matching is achieved when the real part of Z_L is

- (a) 75.0Ω (b) 112.5Ω
(c) 33.3Ω (d) 50.0Ω

Ans. (b)

$$Z_{in\lambda/4} = \frac{Z_0^2}{Z_L} = \frac{(75)^2}{0} = \infty \quad \left[\text{for } \frac{\lambda}{4} \text{ T}_X \text{ line} \right]$$

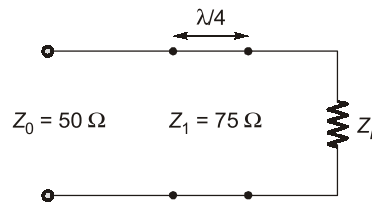
Given Z_L of $\frac{\lambda}{4}$ line is 0(SC)

$$Z_{in\lambda/2} = Z_L = \infty \quad \left[\text{for } \frac{\lambda}{2} \text{ T}_X \text{ line} \right]$$

Given Z_L of $\frac{\lambda}{2}$ line is ∞ (O.C)

The input impedance of $\frac{\lambda}{4}$ transmission line, as well as $\frac{\lambda}{2}$ transmission line is ∞ , and they are in parallel with main transmission line, so they are not effective for main Transmission line.

Final configuration of given line is



For impedance matching, $Z_L = \frac{Z_1^2}{Z_0} = \frac{(75)^2}{50} = 112.5$

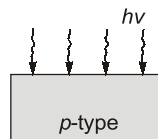
End of Solution

Q.43 A bar of silicon is doped with boron concentration of 10^{16} cm^{-3} and assumed to be fully ionized. It is exposed to light such that electron-hole pairs are generated throughout the volume of the bar at the rate of $1020 \text{ cm}^{-3} \text{ s}^{-1}$. If the recombination lifetime is $100 \mu\text{s}$ intrinsic carrier concentration of silicon is 10^{10} cm^{-3} and assuming 100% ionization of boron, then the approximate product of steady-state electron and hole concentration due to this light exposure is

- (a) $2 \times 10^{20} \text{ cm}^{-6}$ (b) 10^{32} cm^{-6}
(c) 10^{20} cm^{-6} (d) $2 \times 10^{32} \text{ cm}^{-6}$

Ans. (d)

Boron \rightarrow Acceptor type doping



$$\begin{aligned} N_A &= 10^{16} \text{ cm}^{-3} \\ g_{op} &= 1020 \text{ cm}^{-3} \text{ s}^{-1} \\ \tau &= 100 \mu\text{s} \\ n_i &= 10^{10} \text{ cm}^{-3} \end{aligned}$$

Product of steady state electron-hole concentration = ?

At thermal equilibrium (before shining light)

Hole concentration, $p_o \simeq N_A = 10^{16} \text{ cm}^{-3}$

Electron concentration, $n_o = \frac{n_i^2}{p_o} = \frac{10^{20}}{10^{16}} = 10^4 \text{ cm}^{-3}$

After, illumination of light,

Hole concentration, $p = p_o + \delta p$

Electron concentration, $n = n_o + \delta n$

Due to shining light, excess carrier concentration,

$$\delta p = \delta n = g_{op} \cdot \tau = 10^{20} \times 100 \times 10^{-6} = 10^{16} \text{ cm}^{-3}$$

$\therefore p = 10^{16} + 10^{16} = 2 \times 10^{16} \text{ cm}^{-3}$

$n = 10^4 + 10^{16} \simeq 10^{16} \text{ cm}^{-3}$

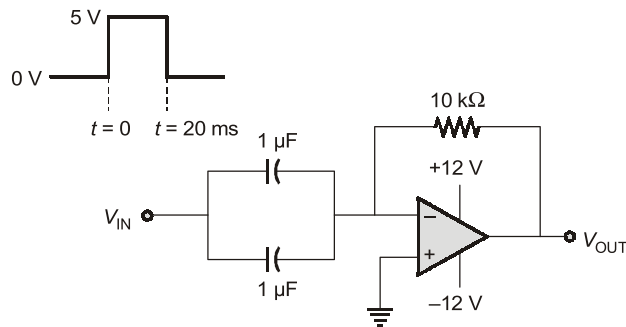
So, product of steady state electron-hole concentration

$$= np = 10^{16} \times 2 \times 10^{16}$$

$$= 2 \times 10^{32} \text{ cm}^{-6}$$

End of Solution

Q.44 A circuit with an ideal Op-Amp is shown in the figure. A pulse V_{IN} of 20 ms duration is applied to the input. The capacitors are initially uncharged.



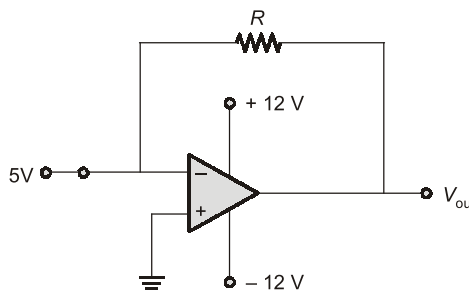
The output voltage V_{OUT} of this circuit at $t = 0^+$ (in integer) is _____ V.

Ans. (-12)

At, $t = 0^+$: Capacitor is short circuit

$\therefore V^- = V_{in} = 5 \text{ V}$

$V^+ = 0 \text{ V}$



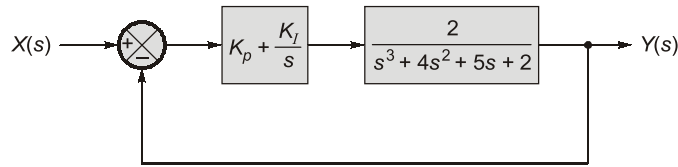
If

$V^- > V^+$

$V_{out} = -V_{sat} = -12 \text{ V}$

End of Solution

Q.45 A unity feedback system that uses proportional-integral (PI) control is shown in the figure.



The stability of the overall system is controlled by tuning the PI control parameters K_p and K_I . The maximum value of K_I that can be chosen so as to keep the overall system stable or, in the worst case, marginally stable (rounded off to three decimal places) is _____.

Ans. (3.125)

$$GH = \left(\frac{sK_p + K_I}{s} \right) \left(\frac{2}{s^3 + 4s^2 + 5s + 2} \right)$$

$$q(s) = s^4 + 4s^3 + 5s^2 + s(2 + 2K_p) + 2K_I$$

Necessary:

$$K_p > -1; K_I > 0$$

s^4	1	5	$2K_I$
s^3	4	$2 + 2K_p$	
s^2	$\frac{18 - 2K_p}{4}$	$2K_I$	
s^1	$(9 - K_p)(1 + K_p) - 8K_I$		
s^0	$2K_I$		

Sufficient:

$$\frac{18 - 2K_p}{4} > 0$$

\Rightarrow

$$K_p < 9$$

\therefore

$$-1 < K_p < 9$$

$$(18 - 2K_p)(2 + 2K_p) - 32K_I > 0$$

$$32K_I < 36 + 32K_p - 4K_p^2$$

\therefore

$$0 < K_I < \frac{36 + 32K_p - 4K_p^2}{32}$$

$$\text{If } K_p = -1 \Rightarrow K_I = 0$$

$$\text{If } K_p = 9 \Rightarrow K_I = 0$$

\therefore

$$\frac{dK_I}{dK_p} = 0$$

\Rightarrow

$$32 - 8K_p = 0 \Rightarrow K_p = 4$$

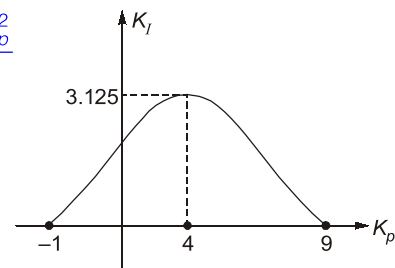
\therefore For $K_p = 4$, K_I is maximum, which is

$$K_I = \frac{36 + 32 \times 4 - 64}{32} = 3.125$$

For $K_p = 4$, $K_I < 3.125$ for stability

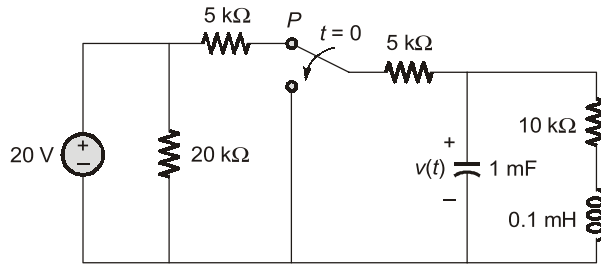
\therefore

$$K_{I\max} = 3.125$$



End of Solution

Q.46 The switch in the circuit in the figure is in position *P* for a long time and then moved to position *Q* at time $t = 0$.

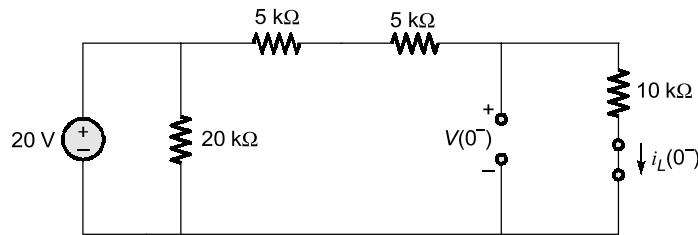


The value of $\frac{dv(t)}{dt}$ at $t = 0^+$ is

- (a) 3 V/s
- (b) -5 V/s
- (c) 0 V/s
- (d) -3 V/s

Ans. (d)

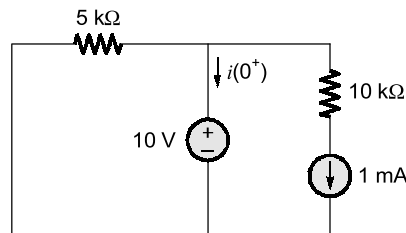
Inductor and capacitors are connected to the inductance source for a long time, so these elements have reached steady state.



$$i_L(0^-) = \frac{20}{5\text{ k}\Omega + 5\text{ k}\Omega + 10\text{ k}\Omega} = 1\text{ mA}$$

$$V(0^-) = 10\text{ V}$$

$$t = 0^+$$



$$i(0^+) + \frac{10}{5k} + 1\text{ mA} = 0$$

$$i(0^+) = -3\text{ mA}$$

$$C \frac{dV(0^+)}{dt} = -3\text{ mA}$$

$$1 \times 10^{-3} \frac{dV(0^+)}{dt} = -3\text{ mA}$$

$$\frac{dV(0^+)}{dt} = -3\text{ V/s}$$

End of Solution



MADE EASY
India's Best Institute for IES, GATE & PSUs





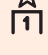
POSTAL PACKAGE



- **CSE**
- **ESE**
- **GATE**
- **PSUs**
- **SSC-JE**
- **RRB-JE**
- **MPSC**
- **OPSC**
- **BPSC**
- **Other State Engineering Services Exams**

“ **Postal Study Package** is the distance learning program designed to meet the needs of the college going students, working professionals and those who are unable to join the classroom courses. The study material is compact, yet comprehensive & effective and easy to understand. MADE EASY has made all efforts to provide an error free material introducing smart and shortcut techniques for better understanding. ”

Salient Features of Postal Study Package

-  Full Emphasis on both technical and non-technical aspects (Including GS, Aptitude, Reasoning and Engineering Mathematics).
-  Subjectwise Theory and practice sets.
-  Previous year questions along with solutions.
-  Revised and updated study material.
-  Proven track record of making students succeed.

Note:

1. The study material is usually sent in 2 or more packages.
2. Current Affairs for ESE will be sent 1 month prior to examination.

For book list, fee structure & online purchasing, visit : www.madeeasy.in

One can also buy by walk-in at any MADE EASY centre across India. Material will be dispatched to his/her address.

Dispatch procedure: After receiving the online order/demand draft we ship the material within a week, however delivery timing may vary depending on the destination (location).

Address: Corporate Office: 44-A/1, Kalu Sarai, Sarvapriya Vihar, Near Hauz Khas Metro Station, New Delhi-110016

Ph: 011-45124645, 08860378004 | **E-mail:** postalstudycourse@madeeasy.in

Q.47 The exponential Fourier series representation of a continuous-time periodic signal $x(t)$ is defined as

$$x(t) = \sum_{k=-\infty}^{\infty} a_k e^{jk\omega_0 t}$$

where ω_0 is the fundamental angular frequency of $x(t)$ and the coefficients of the series are a_k . The following information is given about $x(t)$ and a_k .

- I. $x(t)$ is real and even, having a fundamental period of 6.
- II. The average value of $x(t)$ is 2.

$$\text{III. } a_k = \begin{cases} k, & 1 \leq k \leq 3 \\ 0, & k > 3 \end{cases}$$

The average power of the signal $x(t)$ (rounded off to one decimal place) is ____.

Ans. (32)

1. $x(t)$ is real and even so a_k is also real and even $a_k = a_{-k}$
2. Average of $x(t)$ is 2 i.e., $a_0 = 2$.
3. $x(t) \rightarrow a_k = \begin{matrix} k & 1 \leq k \leq 3 \\ 0 & k > 3 \end{matrix} \quad \begin{matrix} a_1 = 1 & a_{-1} = 1 \\ a_2 = 2 & a_{-2} = 2 \\ a_3 = 3 & a_{-3} = 3 \end{matrix}$
4. $T_0 = 6$

Parsval's Power Theorem

$$\frac{1}{T} \int_0^T |x(t)|^2 dt = \sum_{n=-\infty}^{+\infty} |a_n|^2$$

$$\begin{aligned} P_{x(t)} &= \sum_{n=-\infty}^{+\infty} |a_n|^2 = |a_{-3}|^2 + |a_{-2}|^2 + |a_{-1}|^2 + |a_0|^2 + |a_1|^2 + |a_2|^2 + |a_3|^2 \\ &= 2|a_1|^2 + 2|a_2|^2 + 2|a_3|^2 + |a_0|^2 \\ &= 2 \times 1^2 + 2 \times (2)^2 + 2(3)^2 + (2)^2 \\ &= 2 + 8 + 18 + 4 \\ P_{x(t)} &= 32 \end{aligned}$$

End of Solution

Q.48 The content of the registers are $R_1 = 25H$, $R_2 = 30H$ and $R_3 = 40H$. The following machine instructions are executed,

PUSH $\{R_1\}$

PUSH $\{R_2\}$

PUSH $\{R_3\}$

POP $\{R_1\}$

POP $\{R_2\}$

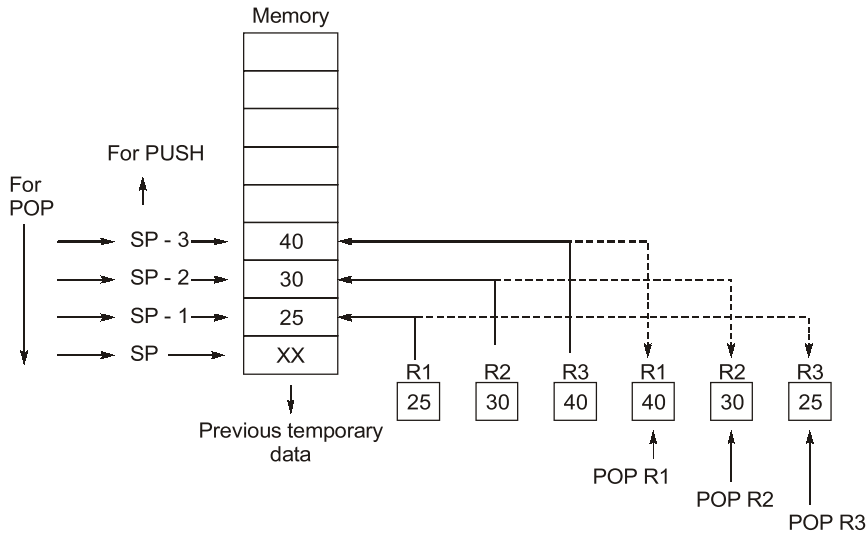
POP $\{R_3\}$

After execution, the content of registers R_1 , R_2 , R_3 are

- (a) $R_1 = 40H$, $R_2 = 30H$, $R_3 = 25H$
- (b) $R_1 = 30H$, $R_2 = 40H$, $R_3 = 25H$
- (c) $R_1 = 25H$, $R_2 = 30H$, $R_3 = 40H$
- (d) $R_1 = 40H$, $R_2 = 25H$, $R_3 = 30H$

Ans. (a)

For PUSH SP is decremented and for POP SP is incremented.



$$\therefore \begin{aligned} [R1] &= 40 \\ [R2] &= 30 \\ [R3] &= 25 \end{aligned}$$

End of Solution

Q.49 An antenna with a directive gain of 6 dB is radiating a total power of 16 kW. The amplitude of the electric field in free space at a distance of 8 km from the antenna in the direction of 6 dB gain (rounded off to three decimal places) is _____ V/m.

Ans. (0.244)

$$\begin{aligned} G_d(\text{dB}) &= 10 \log_{10}(G_d) \\ \Rightarrow 6 &= 10 \log_{10} G_d \\ \Rightarrow G_d &= 10^{0.6} \\ G_d &= 3.981 \\ E_m &= \frac{\sqrt{60 G_d P_{\text{rad}}}}{r} \\ E_m &= \frac{\sqrt{60(16 \times 10^3)(3.981)}}{8 \times 10^3} = 0.244 \text{ (V/m)} \end{aligned}$$

End of Solution

Q.50 A 4 kHz sinusoidal message signal having amplitude 4 V is fed to a delta modulator (DM) operating at a sampling rate of 32 kHz. The minimum step size required to avoid slope overload noise in the DM (rounded off to two decimal places) is _____ V.

Ans. (3.14)

$$\begin{aligned} f_m &= 4 \text{ kHz} \\ A_m &= 4 \text{ V} \\ f_s &= 32 \text{ kHz} \end{aligned}$$

To avoid SOE $\rightarrow \frac{\Delta}{T_s} \geq 2\pi f_m A_m$

$$\Delta \times 32 \text{ k} \geq 2\pi \times 4 \text{ k} \times 4 \text{ V}$$

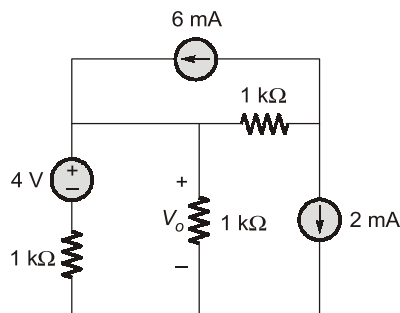
$$\Delta \geq \pi$$

$$(\Delta)_{\min} = \pi \text{ volts}$$

$$(\Delta)_{\min} = 3.14 \text{ volts}$$

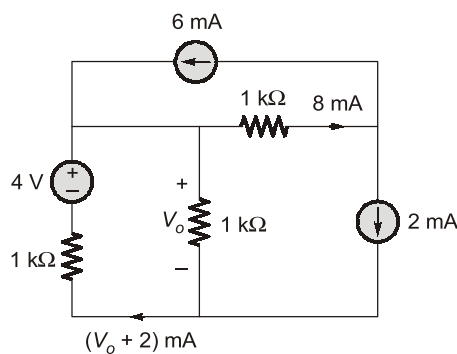
End of Solution

Q.51 Consider the circuit shown in the figure.



The value of V_o (rounded off to one decimal place) is _____ V.

Ans. (1)



Write KVL equation first loop,

$$V_o - 4 + 1(V_o + 2) = 0$$

$$V_o = 1 \text{ V}$$

End of Solution

Q.52 Consider the signals $x[n] = 2^{n-1} u[-n + 2]$ and $y[n] = 2^{-n+2} u[n + 1]$, where $u[n]$ is the unit step sequence. Let $X(e^{j\omega})$ and $Y(e^{j\omega})$ be the discrete-time Fourier transform of $x[n]$ and $y[n]$, respectively. The value of the integral

$$\frac{1}{2\pi} \int_0^{2\pi} X(e^{j\omega}) Y(e^{-j\omega}) d\omega$$

(rounded off to one decimal place) is _____.

Ans. (8)

$$\begin{aligned} x[n] &= 2^{n-1} u[-n + 2] \\ y[n] &= 2^{-n+2} u[n + 1] \\ y[-n] &= 2^{n+2} u[-n + 1] \end{aligned}$$

$$V = \frac{1}{2\pi} \int_0^{2\pi} X(e^{j\omega}) Y(e^{-j\omega}) d\omega \quad \dots(i)$$

$$\begin{aligned} z[n] &= x[n] * y[-n] \\ z[n] &\rightarrow Z(e^{j\omega}) \end{aligned}$$

$$z[n] = \frac{1}{2\pi} \int_{-\pi}^{\pi} Z(e^{j\omega}) e^{j\omega n} d\omega$$

Put $n = 0$,

$$z[0] = \frac{1}{2\pi} \int_0^{2\pi} Z(e^{j\omega}) d\omega \quad \dots(ii)$$

Compare equations (i) and (ii)

$$\begin{aligned} z[0] &= V \\ Z(e^{j\omega}) &= X(e^{j\omega}) Y(e^{-j\omega}) \end{aligned}$$

Apply IDTFT,

\therefore

$$\begin{aligned} z[n] &= x[n] * y[-n] = x[n] * p[n] \\ p[n] &= y[-n] = 2^{n+2} u[-n + 1] \end{aligned}$$

$$\begin{aligned} z[n] &= \sum_{k=-\infty}^{+\infty} 2^{k-1} u[-k + 2] 2^{n-k+2} u[-n + k + 1] \\ &= \sum_{k=-\infty}^2 2^{k-1} \cdot 1 \cdot 2^{n-k+2} u[k + 1 - n] \\ &= \sum_{k=-\infty}^2 2^{k-1+n-k+2} u[k + 1 - n] \end{aligned}$$

$$z[n] = \sum_{k=-\infty}^2 2^{n+1} u[k - n + 1]$$

Put $n = 0$,

$$V = z[0] = \sum_{k=-\infty}^2 2^1 \cdot u[k + 1] = 2 \sum_{k=-1}^2 1 = 2[1 + 1 + 1 + 1]$$

$$V = 8$$

End of Solution

Q.53 The refractive indices of the core and cladding of an optical fibre are 1.50 and 1.48, respectively. The critical propagation angle, which is defined as the maximum angle that the light beam makes with the axis of the optical fibre to achieve the total internal reflection, (rounded off to two decimal places) is _____ degree.

Ans. (14.13)

Given that

Refractive index of core $\eta_1 = 1.50$

Refractive index of clad $\eta_2 = 1.48$

Critical propagation angle (θ_a)

$$\theta_a = \sin^{-1} \left[\sqrt{\eta_1^2 - \eta_2^2} \right] = \sin^{-1} \sqrt{1.5^2 - 1.48^2} = 14.13$$

End of Solution

Q.54 For a vector field $\vec{D} = \rho \cos^2 \phi \hat{a}_\rho + z^2 \sin^2 \phi \hat{a}_\phi$ in a cylindrical coordinate system (ρ, ϕ, z) with unit vectors $\hat{a}_\rho, \hat{a}_\phi$ and \hat{a}_z , the net flux of \vec{D} leaving the closed surface of the cylinder ($\rho = 3, 0 \leq z \leq 2$) (rounded off to two decimal places) is _____.

Ans. (56.55)

Method 1: $\vec{D} = \rho \cos^2 \phi \hat{a}_\rho + z^2 \sin^2 \phi \hat{a}_\phi$

Electric flux crossing the closed surface is

$$\psi = \oiint \vec{D} \cdot d\vec{S} = \iiint (\vec{\nabla} \cdot \vec{D}) dv$$

$$\vec{\nabla} \cdot \vec{D} = \frac{1}{\rho} \frac{\partial}{\partial \rho} (\rho D_\rho) + \frac{1}{\rho} \frac{\partial D_\phi}{\partial \phi} + \frac{\partial D_z}{\partial z}$$

$$= \frac{1}{\rho} \frac{\partial}{\partial \rho} (\rho \rho \cos^2 \phi) + \frac{1}{\rho} \frac{\partial}{\partial \phi} (z^2 \sin^2 \phi) + 0$$

$$= \frac{1}{\rho} (2\rho) \cos^2 \phi + \frac{1}{\rho} z^2 2 \sin \phi \cos \phi = 2 \cos^2 \phi + \frac{z^2}{\rho} \sin 2\phi$$

$$\iiint (\vec{\nabla} \cdot \vec{D}) dv = \iiint 2 \cos^2 \phi (\rho d\rho d\phi dz) + \iiint \left(\frac{z^2}{\rho} \sin 2\phi \right) \rho d\rho d\phi dz$$

$$= 2 \int_{\rho=0}^3 \rho d\rho \int_{\phi=0}^{2\pi} \left(\frac{1 + \cos 2\phi}{2} \right) d\phi \int_{z=0}^2 dz + \int_{\rho=0}^2 d\rho \int_{\phi=0}^{2\pi} \sin 2\phi d\phi \int_{z=0}^2 z^2 dz$$

$$= 2 \left(\frac{\rho^2}{2} \right)_{\rho=0}^3 \frac{1}{2} (2\pi) (z)_{z=0}^2 + 0$$

$$= 2 \left(\frac{3^2}{2} \right) \pi (2) = 18\pi \text{ (Coulomb)} = 56.55 \text{ (Coulomb)}$$

Method 2: Electric flux crossing the closed surface is

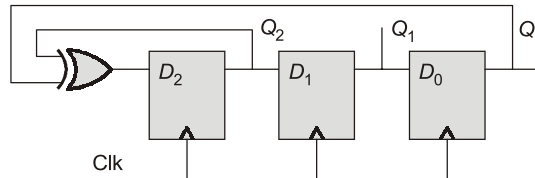
$$\psi = \oiint \vec{D} \cdot \vec{dS}$$

Electric flux crossing $\rho = 3$ cylindrical surface is

$$\begin{aligned} \psi|_{\rho=3} &= \oiint (\rho \cos^2 \phi \hat{a}_\rho) \cdot (\rho d\phi dz) \hat{a}_\rho \\ &= 3^2 \int_{\phi=0}^{2\pi} \cos^2 \phi d\phi \int_{z=0}^2 dz \\ &= 9 \frac{1}{2} (2\pi)(2) = 18\pi (\text{coulomb}) = 56.55 (\text{coulomb}) \end{aligned}$$

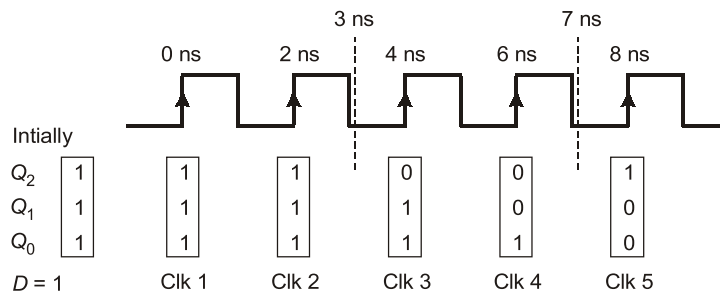
End of Solution

Q.55 The propagation delay of the exclusive-OR (XOR) gate in the circuit in the figure is 3 ns. The propagation delay of all the flip-flops is assumed to be zero. The clock (Clk) frequency provided to the circuit is 500 MHz.



Starting from the initial value of the flip-flop outputs $Q_2 Q_1 Q_0 = 111$ with $D_2 = 1$, the minimum number of triggering clock edges after which the flip-flop outputs $Q_2 Q_1 Q_0$ becomes 100 (in integer) is _____.

Ans. (5)



\therefore Total 5 clocks required.

End of Solution

