

Architecture & planning.

PAGE NO.	
DATE	

Q. GATE (AR). (MCQ).

① Gordon Cullen's "Rashtrapati Bhawan, Delhi" is based on what principle?

Ans → serial vision.

② which of the following is polycentric model?

Ans → Harris & Ullman

③ India's finest resolution satellite for urban area analysis

Ans → Cartosat.

④ which of the following is Thermal comfort Index

A) NOVI B) PCA C) PMV D) PEM.

Ans: PMV.

⑤ Three equally spaced hues in colour wheel are called

Ans: Triad.

⑥ smallest unit of raster data

Ans: pixel.

Q. Trip generation model was dependent on (something sort of).

→ Ans:.. no. of trips

Q. Freight Transport is converted into Truck Transport by which method.

→ Ans:..

Q. Hammerbound ^{test} strength of concrete is used for ?

→ Ans: Compressive strength

Q. In an earthquake, soft-storey effect is due to ?

→

Q.

NAT.

Q. A room having 1.8×2.4 m dimension of internal wall was planned to have ceramic tile of 300×300 mm with skirting of height 600 mm and having a door of 900 mm ~~width~~ in wall calculate no. of tiles

Ans: 96. tiles

Q. slenderness ratio of column of effective height 3m with diameter 300 mm.

Ans: 20.

Q. invert level of pipe is -450mm and another pipe situated at 40 m distⁿ from first pipe with slope of 1:200 calculate invert level of ~~2nd~~ pipe.

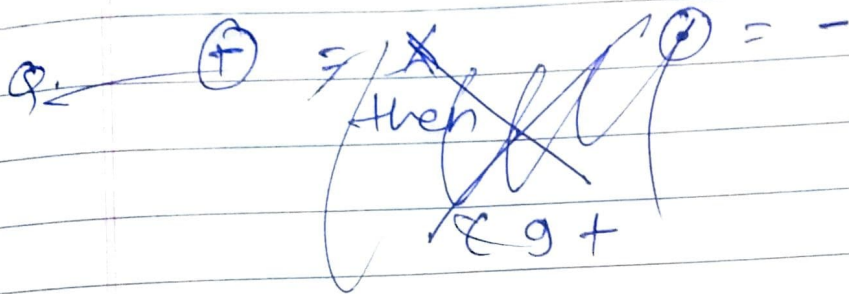
Ans: -650 mm.

Q. question from CPM & PERT in which successor activities were given.

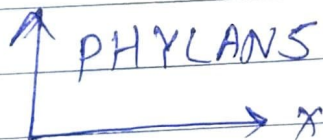
Aptitude:

- Q. Equilateral Triangle $OPQR$,
 PQ is divided in 4 (four) parts
 QR in six parts
 PR is eight parts.
The minimum area of triangle?

→ Ans: $144\sqrt{3}$.



Q.



mirror - image about x-axis

- Q. P, Q, R, S needs to sit in a row,
only condition is ~~that~~ R should
not be second from left end
How many ways are there?