

# Andhra Pradesh State Council of Higher Education

**Question Paper Name:** PSYCHOLOGY  
**Subject Name:** PSYCHOLOGY  
**Creation Date:** 2019-11-10 15:11:50  
**Duration:** 180  
**Total Marks:** 180  
**Display Marks:** Yes  
**Share Answer Key With Delivery Engine:** Yes

## PSYCHOLOGY

**Group Number :** 1  
**Group Id :** 62321756  
**Group Maximum Duration :** 0  
**Group Minimum Duration :** 180  
**Revisit allowed for view? :** No  
**Revisit allowed for edit? :** No  
**Break time:** 0  
**Group Marks:** 180  
**Revisit allowed for group Instructions? :** Yes  
**Maximum Instruction Time:** 0  
**Minimum Instruction Time:** 0

## Teaching and Research Aptitude

**Section Id :** 623217111  
**Section Number :** 1  
**Section type :** Online  
**Mandatory or Optional:** Mandatory  
**Number of Questions:** 82  
**Number of Questions to be attempted:** 82  
**Section Marks:** 90  
**Display Number Panel:** Yes  
**Group All Questions:** No

**Sub-Section Number:** 1  
**Sub-Section Id:** 623217331  
**Question Shuffling Allowed :** Yes

**Question Number : 1 Question Id : 6232179956 Question Type : MCQ Option Shuffling : Yes Display Question Number : Yes**  
**Single Line Question Option : No Option Orientation : Vertical**

**Wrong Marks : 0**

The Teacher has been glorified by the phrase “Friend, Philosopher and guide” because

**Options :**

1. He is a great reformer of the society
2. He has to play all vital roles in the context of society.
3. He transmits the high value of humanity to students.
4. He is a great patriot

Question Number : 2 Question Id : 6232179957 Question Type : MCQ Option Shuffling : Yes Display Question Number : Yes  
Single Line Question Option : No Option Orientation : Vertical

Wrong Marks : 0

What are the characteristics of continuous and comprehensive evaluation?

- a. It increases the workload on students by taking multiple tests.
- b. It replaces marks with grades.
- c. It evaluates every aspect of the student
- d. It helps in reducing examination phobia

Options :

1. (a), (b), (c) and (d)
2. (b) and (c)
3. (a), (b) and (c)
4. (b), (c) and (d)

Question Number : 3 Question Id : 6232179958 Question Type : MCQ Option Shuffling : Yes Display Question Number : Yes  
Single Line Question Option : No Option Orientation : Vertical

Wrong Marks : 0

Before teaching a teacher should

Options :

1. Know the existing knowledge of his students and their background knowledge
2. be aware of the environmental variables acting on the mind of the pupils
3. be competent enough to arouse the curiosity of his pupils
4. All of the other options

Question Number : 4 Question Id : 6232179959 Question Type : MCQ Option Shuffling : Yes Display Question Number : Yes  
Single Line Question Option : No Option Orientation : Vertical  
Wrong Marks : 0

The major responsibility with which the school personnel have been entrusted is that

- Options :
1. It harmonizes the needs of the child and demands of the society for the mutual benefit
  2. It makes the child employable
  3. It prepares the school programme according to the need of the child.
  4. All of the other options

Question Number : 5 Question Id : 6232179960 Question Type : MCQ Option Shuffling : Yes Display Question Number : Yes  
Single Line Question Option : No Option Orientation : Vertical  
Wrong Marks : 0

Moral values can be effectively inculcated among the students when the teacher.

- Options :
1. Frequently talks about the values.
  2. Himself practices them
  3. Tells stories of great persons

## Talks of gods and goddesses

4.

Question Number : 6 Question Id : 6232179961 Question Type : MCQ Option Shuffling : Yes Display Question Number : Yes  
Single Line Question Option : No Option Orientation : Vertical

Wrong Marks : 0

Which of the following is not an example of learner centred method.

Options :

1. Closed ended method

1.

2. Discussion method

2.

3. Discovery based

3.

4. survey method

4.

Question Number : 7 Question Id : 6232179962 Question Type : MCQ Option Shuffling : Yes Display Question Number : Yes  
Single Line Question Option : No Option Orientation : Vertical

Wrong Marks : 0

The highest level of cognitive domain as per revised blooms taxonomy

Options :

1. Applying

1.

2. Analysing

2.

3. Creating

3.

4. Evaluating

4.

Question Number : 8 Question Id : 6232179963 Question Type : MCQ Option Shuffling : Yes Display Question Number : Yes  
Single Line Question Option : No Option Orientation : Vertical

Wrong Marks : 0



As per the UGC recommendations which of the following grade point is correct for B+ grade?

Options :

1. 9

2. 7

3. 8

4. 6

Question Number : 9 Question Id : 6232179964 Question Type : MCQ Option Shuffling : Yes Display Question Number : Yes  
Single Line Question Option : No Option Orientation : Vertical

Wrong Marks : 0

The teacher's role at the higher educational level is to:

Options :

1. Provide information to students

2. Encourage healthy competition among students.

3. Help students to solve their personal problems.

4. Promote self – learning in students.

Question Number : 10 Question Id : 6232179965 Question Type : MCQ Option Shuffling : Yes Display Question Number : Yes  
Single Line Question Option : No Option Orientation : Vertical

Wrong Marks : 0

In the process of conducting research “Formulation of Hypothesis” is followed by

Options :

1. Statement of objectives

2. Selection of research tools

3. Need for the study

4. Problem statement

Question Number : 11 Question Id : 6232179966 Question Type : MCQ Option Shuffling : Yes Display Question Number : Yes  
Single Line Question Option : No Option Orientation : Vertical

Wrong Marks : 0

Which of the following variable cannot be expressed in quantitative terms?

Options :

1. Marital status

2. Income

3. Age

4. Experience

Question Number : 12 Question Id : 6232179967 Question Type : MCQ Option Shuffling : Yes Display Question Number : Yes  
Single Line Question Option : No Option Orientation : Vertical

Wrong Marks : 0

The form that is filled by investigation to collect information from the respondent is called as

Options :

1. Schedule

2. Report

3. Response sheet

# Field report

4.

Question Number : 13 Question Id : 6232179968 Question Type : MCQ Option Shuffling : Yes Display Question Number : Yes  
Single Line Question Option : No Option Orientation : Vertical

Wrong Marks : 0

Studying an element and inferences made for the whole universe is called

Options :

1. Inductive logic

1.

2. Deductive logic

2.

3. Predictive logic

3.

4. No logic

4.

Question Number : 14 Question Id : 6232179969 Question Type : MCQ Option Shuffling : Yes Display Question Number : Yes  
Single Line Question Option : No Option Orientation : Vertical

Wrong Marks : 0

The following is not a probabilistic sampling scheme.

Options :

1. Stratified random sample

1.

2. Cluster sample

2.

3. Systematic sample

3.

4. Judgement sample

4.

Question Number : 15 Question Id : 6232179970 Question Type : MCQ Option Shuffling : Yes Display Question Number : Yes  
Single Line Question Option : No Option Orientation : Vertical

Wrong Marks : 0

The population census carried out by the Government of India is an example of

Options :

1. Exploratory Research
2. Action Research
3. Descriptive Research
4. Analytical Research

Question Number : 16 Question Id : 6232179971 Question Type : MCQ Option Shuffling : Yes Display Question Number : Yes  
Single Line Question Option : No Option Orientation : Vertical

Wrong Marks : 0

The following is not a part of Research ethics.

Options :

1. Respect for self interest
2. Respect for Intellectual property
3. Respect for confidentiality
4. Respect to fact presentation

Question Number : 17 Question Id : 6232179972 Question Type : MCQ Option Shuffling : Yes Display Question Number : Yes  
Single Line Question Option : No Option Orientation : Vertical

Wrong Marks : 0

Giving credit to individuals for their creative and intellectual works that has been utilised in the research study is called

Options :



1. Bibliography

2. Reference

3. Citation

4. End note

Question Number : 18 Question Id : 6232179973 Question Type : MCQ Option Shuffling : Yes Display Question Number : Yes  
Single Line Question Option : No Option Orientation : Vertical

Wrong Marks : 0

Accepting null hypothesis when it is false is called

Options :

1. Type-I error

2. Type-II error

3. Sampling error

4. Parallax error

Sub-Section Number:	2
Sub-Section Id:	623217332
Question Shuffling Allowed :	Yes

Question Id : 6232179974 Question Type : COMPREHENSION Sub Question Shuffling Allowed : Yes Group Comprehension Questions : No

Question Numbers : (19 to 27)

Question Label : Comprehension

**Read the following passage and answer the question**

We look down upon the insects as almost the lowest of living things, and yet these tiny things have learnt the art of co-operation and of sacrifice for the common good far better than man. Ever since I read of the White Ant and of its sacrifice for its comrades, I have developed a soft corner in my heart for it. If mutual co-operation and sacrifice for the good of society are the tests of civilization, we may say that the White Ant and the Ant are in this respect superior to man.

In one of our old Sanskrit books there is a verse which can be translated as follows: “for the family sacrifice the individual, for the community the family, for the country the community and for the soul the whole world”. What the soul is few of us can know or tell and each one of us can interpret it in a different way. But the lesson this Sanskrit verse teaches us is the same lesson of co-operation and sacrifice for the larger good. We in India had forgotten this sovereign path to real greatness for many a day, and so we had fallen. But again we seem to have glimpses of it, and all the country is astir. How wonderful it is to see men and women, and boys and girls, smilingly going ahead in India’s cause and not caring about any pain or suffering! Well may they smile and be glad, for the joy of serving in a great cause is theirs; and to those who are fortunate comes the joy of sacrifice also. Today we are trying to free India. This is a great thing. But even greater is the cause of humanity itself. And because we feel that our struggle is a part of the great human struggle to end suffering and misery, we can rejoice that we are doing our little bit to help the progress of the world.

**Sub questions**

Question Number : 19 Question Id : 6232179975 Question Type : MCQ Option Shuffling : Yes Display Question Number : Yes  
Single Line Question Option : No Option Orientation : Vertical

Wrong Marks : 0

**In which respect are the insects better than man?**

**Options :**

1. More in number

1.

2. Sacrifice for the common good

2.

3. Less complex biological constitution

4. Smaller in size

Question Number : 20 Question Id : 6232179976 Question Type : MCQ Option Shuffling : Yes Display Question Number : Yes  
Single Line Question Option : No Option Orientation : Vertical  
Wrong Marks : 0

## What are the tests of civilization?

Options :

1. Living together and sharing food

2. Devoid of wars

3. Social etiquette

4. Mutual co-operation and sacrifice

Question Number : 21 Question Id : 6232179977 Question Type : MCQ Option Shuffling : Yes Display Question Number : Yes  
Single Line Question Option : No Option Orientation : Vertical  
Wrong Marks : 0

According to the Sanskrit verse, what should be sacrificed for the sake of the country?

Options :

1. The world

2. The community

3. The family

4. The individual

Question Number : 22 Question Id : 6232179978 Question Type : MCQ Option Shuffling : Yes Display Question Number : Yes  
Single Line Question Option : No Option Orientation : Vertical

Wrong Marks : 0

Which concept of human existence can be interpreted in different ways?

Options :

1. The soul

2. The mind

3. The god

4. The life

Question Number : 23 Question Id : 6232179979 Question Type : MCQ Option Shuffling : Yes Display Question Number : Yes  
Single Line Question Option : No Option Orientation : Vertical

Wrong Marks : 0

Why had the people of India fallen?

Options :

1. Imitation of western culture

2. Hundreds of years slavery

3. Forgotten the sovereign path

4. Lack of confidence in their culture

Question Number : 24 Question Id : 6232179980 Question Type : MCQ Option Shuffling : Yes Display Question Number : Yes  
Single Line Question Option : No Option Orientation : Vertical

Wrong Marks : 0

How did the people of the country stand for India's cause?

Options :



1. Following the National leaders
2. Studying law abroad
3. Being religious
4. Taking pain and suffering in their stride

Question Number : 25 Question Id : 6232179981 Question Type : MCQ Option Shuffling : Yes Display Question Number : Yes  
Single Line Question Option : No Option Orientation : Vertical  
Wrong Marks : 0

Who were considered fortunate by the author?

Options :

1. The British
2. Freedom fighters
3. Non-Resident Indians
4. The rich of India

Question Number : 26 Question Id : 6232179982 Question Type : MCQ Option Shuffling : Yes Display Question Number : Yes  
Single Line Question Option : No Option Orientation : Vertical  
Wrong Marks : 0

What is greater than freeing India from the foreign rule?

Options :

1. Working for the cause of humanity
2. Preserving wild life

Balancing ecology

3.

Protecting the water bodies

4.

Question Number : 27 Question Id : 6232179983 Question Type : MCQ Option Shuffling : Yes Display Question Number : Yes  
Single Line Question Option : No Option Orientation : Vertical

Wrong Marks : 0

What does taking up the cause of humanity lead to?

Options :

End of suffering and misery

1.

End of greed and desire

2.

Progress of the world

3.

End of poverty

4.

Sub-Section Number: 3  
Sub-Section Id: 623217333  
Question Shuffling Allowed : Yes

Question Number : 28 Question Id : 6232179984 Question Type : MCQ Option Shuffling : Yes Display Question Number : Yes  
Single Line Question Option : No Option Orientation : Vertical

Wrong Marks : 0

An author communicating with a reader through a book is an example of \_\_\_\_\_.

Options :

No communication

1.

Interpersonal communication

2.

Group communication

3.

## Mass communication

4.

Question Number : 29 Question Id : 6232179985 Question Type : MCQ Option Shuffling : Yes Display Question Number : Yes  
Single Line Question Option : No Option Orientation : Vertical

Wrong Marks : 0

Differentiation between acceptance and non-acceptance of certain stimuli in classroom communication is the basis of

Options :

1. Selective attention

1.

2. Selective morality

2.

3. Selective expectation of performance

3.

4. Selective application to peer group.

4.

Question Number : 30 Question Id : 6232179986 Question Type : MCQ Option Shuffling : Yes Display Question Number : Yes  
Single Line Question Option : No Option Orientation : Vertical

Wrong Marks : 0

Which of the following is NOT one of the primary functions of mass communication.

Options :

1. Correlation

1.

2. Cultural transmission

2.

3. Entertainment

3.

4. Immunization

4.

Question Number : 31 Question Id : 6232179987 Question Type : MCQ Option Shuffling : Yes Display Question Number : Yes  
Single Line Question Option : No Option Orientation : Vertical

Wrong Marks : 0

The influence of a group on the attitude of an individual is generally treated in terms of the concept of

Options :

1. Psychological group
2. Physical group
3. Corporative group
4. Reference group

Question Number : 32 Question Id : 6232179988 Question Type : MCQ Option Shuffling : Yes Display Question Number : Yes  
Single Line Question Option : No Option Orientation : Vertical

Wrong Marks : 0

Which of the following theories stress that mass media in a society is controlled by the state power?

Options :

1. Normative
2. Authoritarian
3. Libertarian
4. Social responsibility

Question Number : 33 Question Id : 6232179989 Question Type : MCQ Option Shuffling : Yes Display Question Number : Yes  
Single Line Question Option : No Option Orientation : Vertical

Wrong Marks : 0

Positive classroom communication leads to

Options :

1. coercion



2. submission

3. confrontation

4. persuasion

Question Number : 34 Question Id : 6232179990 Question Type : MCQ Option Shuffling : Yes Display Question Number : Yes  
Single Line Question Option : No Option Orientation : Vertical

Wrong Marks : 0

Deductive communication is

Options :

1. Individual

2. Inter – personal

3. Organizational

4. Relational

Question Number : 35 Question Id : 6232179991 Question Type : MCQ Option Shuffling : Yes Display Question Number : Yes  
Single Line Question Option : No Option Orientation : Vertical

Wrong Marks : 0

Which is the essential component of communication?

Options :

1. Understanding

2. Medium

3. Thoughts

# Intention

4.

Question Number : 36 Question Id : 6232179992 Question Type : MCQ Option Shuffling : Yes Display Question Number : Yes  
Single Line Question Option : No Option Orientation : Vertical

Wrong Marks : 0

Match the following

- |                   |   |                              |
|-------------------|---|------------------------------|
| A) Pictures       | – | 1) High order skills         |
| B) high skills    | – | 2) Visual communication      |
| C) Hums           | – | 3) Speech art                |
| D) Long Distances | – | 4) Public telephone networks |

Options :

1. A-2 B-3 C-1 D-4

2. A-3 B-2 C-1 D-4

3. A-4 B-2 C-1 D-3

4. A-2 B-1 C-3 D-4

Question Number : 37 Question Id : 6232179993 Question Type : MCQ Option Shuffling : Yes Display Question Number : Yes  
Single Line Question Option : No Option Orientation : Vertical

Wrong Marks : 0

The missing number in the sequence of numbers is

4, 5, 9, 18, 34, \_\_\_\_\_, 95

Options :

1. 43

2. 59

3. 67

4. 54

Question Number : 38 Question Id : 6232179994 Question Type : MCQ Option Shuffling : Yes Display Question Number : Yes  
Single Line Question Option : No Option Orientation : Vertical

Wrong Marks : 0

The missing term in the following sequence is

ABC, BDF, \_\_\_\_\_, DHL

Options :

1. DJO

2. CFI

3. DKL

4. DKN

Question Number : 39 Question Id : 6232179995 Question Type : MCQ Option Shuffling : Yes Display Question Number : Yes  
Single Line Question Option : No Option Orientation : Vertical

Wrong Marks : 0

If the numerator of a fraction is increased by 140% and the denominator is increased by

200%, the resultant fraction is  $\frac{1}{2}$ , then the original fraction is

Options :

1.  $\frac{5}{19}$

2.  $\frac{5}{9}$

3.  $\frac{5}{8}$

4.  $\frac{3}{4}$

Question Number : 40 Question Id : 6232179996 Question Type : MCQ Option Shuffling : Yes Display Question Number : Yes  
Single Line Question Option : No Option Orientation : Vertical

Wrong Marks : 0

A person lost 20% by selling an article for 700 rupees. What percent shall he gain by selling it for 1200 rupees?

Options :

1. 25

2. 37

3.  $37\frac{1}{7}$

4. 40

Question Number : 41 Question Id : 6232179997 Question Type : MCQ Option Shuffling : Yes Display Question Number : Yes  
Single Line Question Option : No Option Orientation : Vertical

Wrong Marks : 0

A business man allows a discount of 10% on the marked price of an article. Then how much percentage, above the cost price, the article be marked to make a profit of 35%?

Options :

1. 40

2. 48

3. 55



Question Number : 42 Question Id : 6232179998 Question Type : MCQ Option Shuffling : Yes Display Question Number : Yes  
Single Line Question Option : No Option Orientation : Vertical

Wrong Marks : 0

A man travels from the city A to the city B by a car with an average speed of 96 kmph and returns from B to A by the same car with an average speed of 32 kmph. Then the average speed of the car for the entire journey is \_\_\_\_\_ kmph.

Options :

1. 16

2. 48

3. 64

4. 84

Question Number : 43 Question Id : 6232179999 Question Type : MCQ Option Shuffling : Yes Display Question Number : Yes  
Single Line Question Option : No Option Orientation : Vertical

Wrong Marks : 0

In a certain language TABLE is code as UACME, then the code word for CHAIR is

Options :

1. DLATS

2. BLAIQ

3. DHAIS

4. DIBJS

Question Number : 44 Question Id : 62321710000 Question Type : MCQ Option Shuffling : Yes Display Question Number : Yes  
Single Line Question Option : No Option Orientation : Vertical

Wrong Marks : 0

If  $x:y:z = 2:3:5$ , then  $\frac{x}{y} : \frac{y}{z} : \frac{z}{x} =$

Options :

1. 20:18:75

2. 6:15:13

3. 10:13:15

4. 6:15:10

Question Number : 45 Question Id : 62321710001 Question Type : MCQ Option Shuffling : Yes Display Question Number : Yes  
Single Line Question Option : No Option Orientation : Vertical

Wrong Marks : 0

If an amount X invested with a compound interest rate of 10% per annum become Rs 1,665/- in 3 years. Then the invested amount X is .....

Options :

1. 3,500

2. 5,555

3. 5,000

4. 6,500

Sub-Section Number: 4  
Sub-Section Id: 623217334  
Question Shuffling Allowed : No

Question Number : 46 Question Id : 62321710002 Question Type : MCQ Option Shuffling : Yes Display Question Number : Yes  
Single Line Question Option : No Option Orientation : Vertical

Wrong Marks : 0

Raju is two seats to Ramu's left. Ranga is three seats to Raju's right. Rao is two seats to Raju's left. Krishna is six seats to Sita's right. Sarma is six seats to Krishna's right. Rao is not sitting next to Raju. Who sits one seat to Sarma's left?

Options :

1. Rao
2. Krishna
3. Raju
4. Sita

Question Number : 47 Question Id : 62321710003 Question Type : MCQ Option Shuffling : Yes Display Question Number : Yes  
Single Line Question Option : No Option Orientation : Vertical

Wrong Marks : 0

Two statements are given with two conclusions I and II. Which logical conclusion can be drawn out as per the statements?

Statements: All windows are needles

Some trees are windows

Conclusion: I. Some trees are needles

II. Some trees are not needles

Options :

1. Only conclusion I follows
2. Only conclusion II follows
3. Both conclusions I and II followed
4. Both conclusions I and II are not followed

Question Number : 48 Question Id : 62321710004 Question Type : MCQ Option Shuffling : Yes Display Question Number : Yes  
Single Line Question Option : No Option Orientation : Vertical

Wrong Marks : 0

The following series follows a pattern. Identify the pattern and fill the blank.

6, 14, 36, 98, \_\_\_\_\_.

Options :

1. 276

2. 275

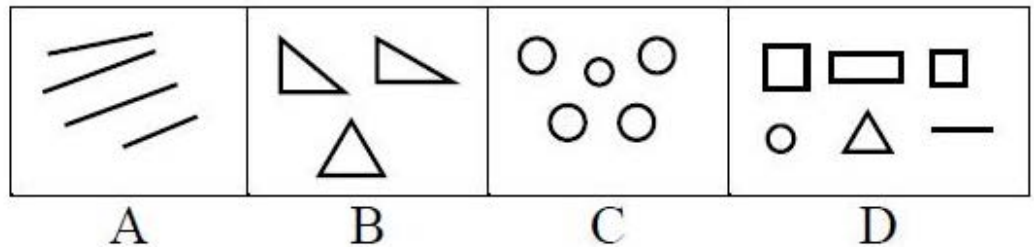
3. 220

4. 274

Question Number : 49 Question Id : 62321710005 Question Type : MCQ Option Shuffling : Yes Display Question Number : Yes  
Single Line Question Option : No Option Orientation : Vertical

Wrong Marks : 0

Choose the figure which is different from other.



Options :

1. C

2. B

3. D

4. A

Question Number : 50 Question Id : 62321710006 Question Type : MCQ Option Shuffling : Yes Display Question Number : Yes  
Single Line Question Option : No Option Orientation : Vertical

Wrong Marks : 0



A is B's sister. C is B's mother. E is D's mother. Then how A is related to D?

Options :

1. Sister
2. Grand Mother
3. Daughter
4. Grand Daughter

Question Number : 51 Question Id : 62321710007 Question Type : MCQ Option Shuffling : Yes Display Question Number : Yes  
Single Line Question Option : No Option Orientation : Vertical

Wrong Marks : 0

Arrange the given words in a meaningful sequence and choose an alternative.

- i) Site
- ii) Plan
- iii) Rent
- iv) Money
- v) Building
- vi) Construction

Options :

1. i, ii, iii, vi, v, iv
2. ii, iii, vi, v, i, iv
3. iii, iv, ii, vi, v, i
4. iv, i, ii, vi, v, iii

Question Number : 52 Question Id : 62321710008 Question Type : MCQ Option Shuffling : Yes Display Question Number : Yes  
Single Line Question Option : No Option Orientation : Vertical

Wrong Marks : 0

Consider the statements “The hill is fiery. Because the hill is smoky. Whatever has fire has smoke”. In this statement, “The hill has smoke which is invariably associated with fire” is

Options :

1. Pratijna
2. Hetu
3. Udaharna
4. Upanaya

Question Number : 53 Question Id : 62321710009 Question Type : MCQ Option Shuffling : Yes Display Question Number : Yes  
Single Line Question Option : No Option Orientation : Vertical

Wrong Marks : 0

Anumāna or inference is defined as

Options :

1. Instrument of judgment
2. Instrument of perception
3. Instrument of fact
4. Instrument of cause

Question Number : 54 Question Id : 62321710010 Question Type : MCQ Option Shuffling : Yes Display Question Number : Yes  
Single Line Question Option : No Option Orientation : Vertical

Wrong Marks : 0

The science and study of pramanas is called

Options :

1. Nyaya

2. Advaita

3. Mimamsa

4. Vedanta

Question Number : 55 Question Id : 62321710011 Question Type : MCQ Option Shuffling : Yes Display Question Number : Yes  
Single Line Question Option : No Option Orientation : Vertical

Wrong Marks : 0

Study the following tabular statement and answer the question below.

The proportion of male students and the proportion of girl students in a school are given in the following tabular statement. The school has a total of 1600 students and 80% of them are in secondary section and the rest are equally divided between the classes 11 and 12.

Class	Male	Girl
11	0.50	0.50
12	0.60	0.40
Secondary section	0.45	0.55

The number of girl students in the class 12 is

Options :

1. 32

2. 160

3. 64

4. 80

Question Number : 56 Question Id : 62321710012 Question Type : MCQ Option Shuffling : Yes Display Question Number : Yes  
Single Line Question Option : No Option Orientation : Vertical

Wrong Marks : 0

Study the following tabular statement and answer the question below.

The proportion of male students and the proportion of girl students in a school are given in the following tabular statement. The school has a total of 1600 students and 80% of them are in secondary section and the rest are equally divided between the classes 11 and 12.

Class	Male	Girl
11	0.50	0.50
12	0.60	0.40
Secondary section	0.45	0.55

The total number of male students in the school is

Options :

1. 700

2. 650

3. 848

4. 752

Question Number : 57 Question Id : 62321710013 Question Type : MCQ Option Shuffling : Yes Display Question Number : Yes Single Line Question Option : No Option Orientation : Vertical

Wrong Marks : 0

Study the following tabular statement and answer the question below.

The proportion of male students and the proportion of girl students in a school are given in the following tabular statement. The school has a total of 1600 students and 80% of them are in secondary section and the rest are equally divided between the classes 11 and 12.

Class	Male	Girl
11	0.50	0.50
12	0.60	0.40
Secondary section	0.45	0.55

The percentage of male students in the secondary section

Options :



1. 36

2. 42

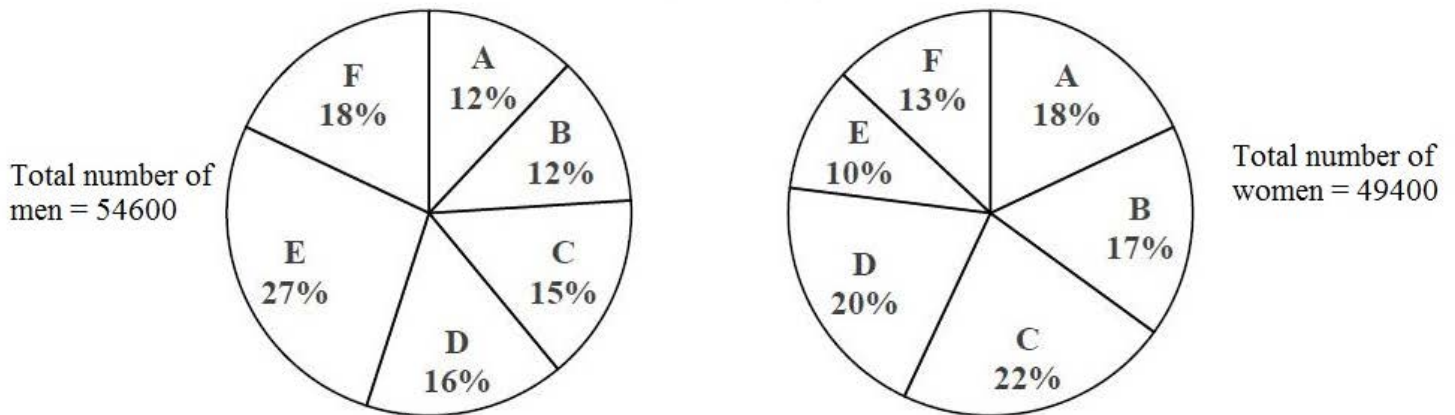
3. 45

4. 48

Question Number : 58 Question Id : 62321710014 Question Type : MCQ Option Shuffling : Yes Display Question Number : Yes  
Single Line Question Option : No Option Orientation : Vertical

Wrong Marks : 0

The following pie chart shows the distribution of men and women in 6 different towns. Based on this information answer the question given below.



Total number of men and women in the town C is

Options :

1. 19000

2. 19058

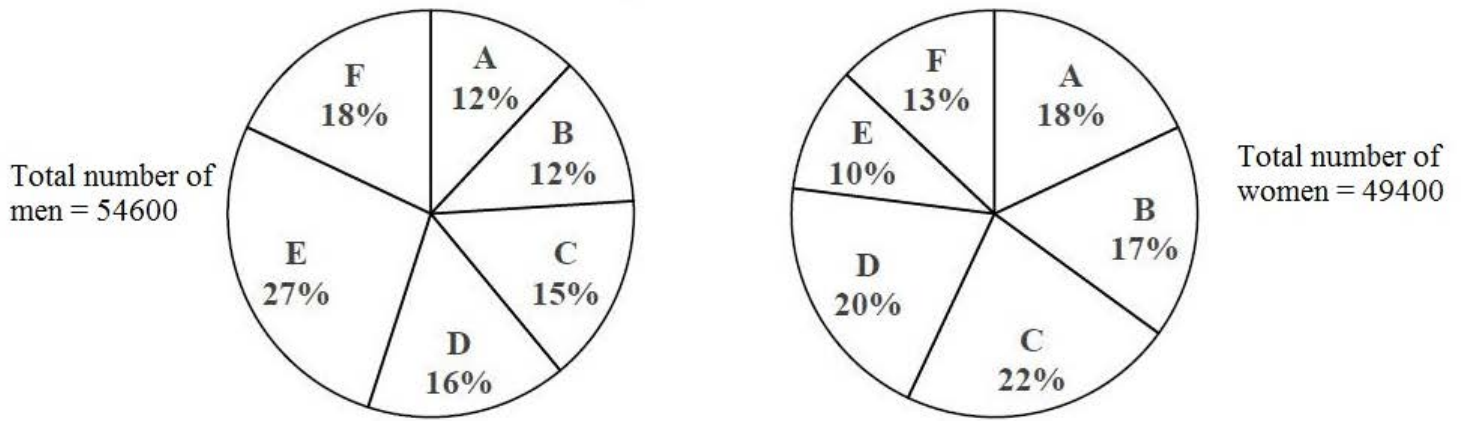
3. 20463

4. 21252

Question Number : 59 Question Id : 62321710015 Question Type : MCQ Option Shuffling : Yes Display Question Number : Yes  
Single Line Question Option : No Option Orientation : Vertical

Wrong Marks : 0

The following pie chart show the distribution of men and women in 6 different towns.  
Based on this information answer the question given below.



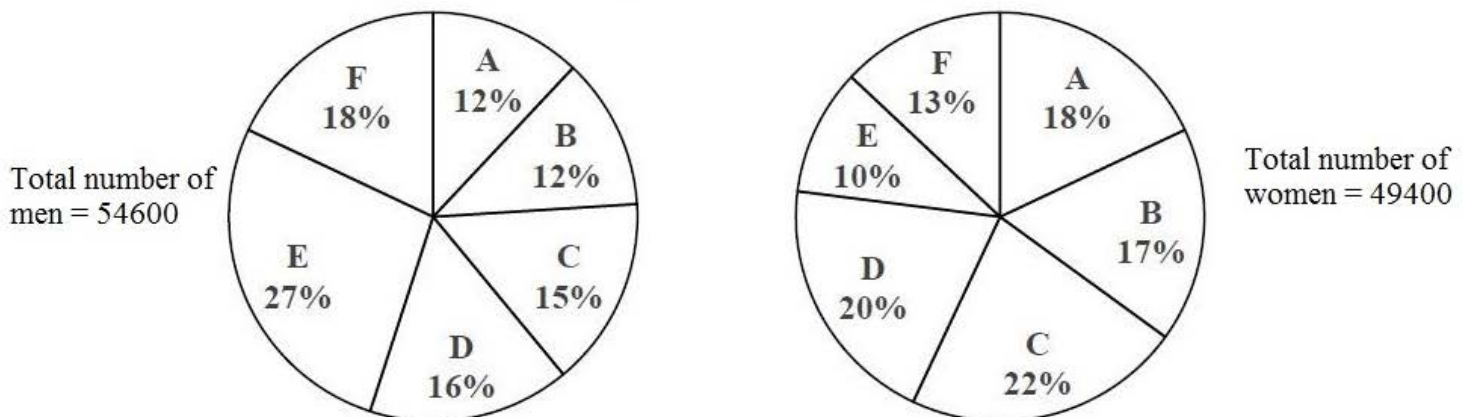
The ratio between the number of men and women in the town D is

Options :

1. 1092:1235
2. 348:177
3. 2:3
4. 12:13

Question Number : 60 Question Id : 62321710016 Question Type : MCQ Option Shuffling : Yes Display Question Number : Yes  
Single Line Question Option : No Option Orientation : Vertical  
Wrong Marks : 0

The following pie chart show the distribution of men and women in 6 different towns.  
Based on this information answer the question given below.



The total number of women in the towns B, D and F is

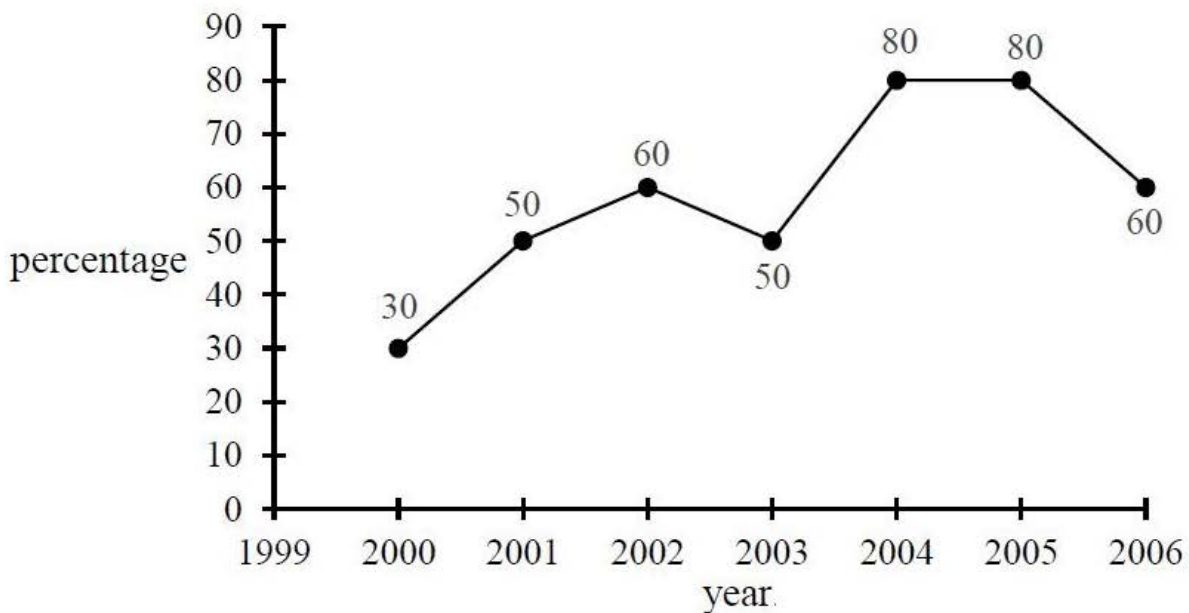
Options :

1. 24000
2. 24363
3. 24700
4. 29560

Question Number : 61 Question Id : 62321710017 Question Type : MCQ Option Shuffling : Yes Display Question Number : Yes Single Line Question Option : No Option Orientation : Vertical

Wrong Marks : 0

The following line graph represents the percentage of the number of qualified candidates in an examination out of the total number of candidates appeared in that examination for the corresponding year. Based on the information for the years 2000 to 2006, answer the question below.



If the number of qualified candidates in 2004 was 42400, then the number of candidates appeared for the examination in 2004 was

Options :

1. 50000
2. 53250

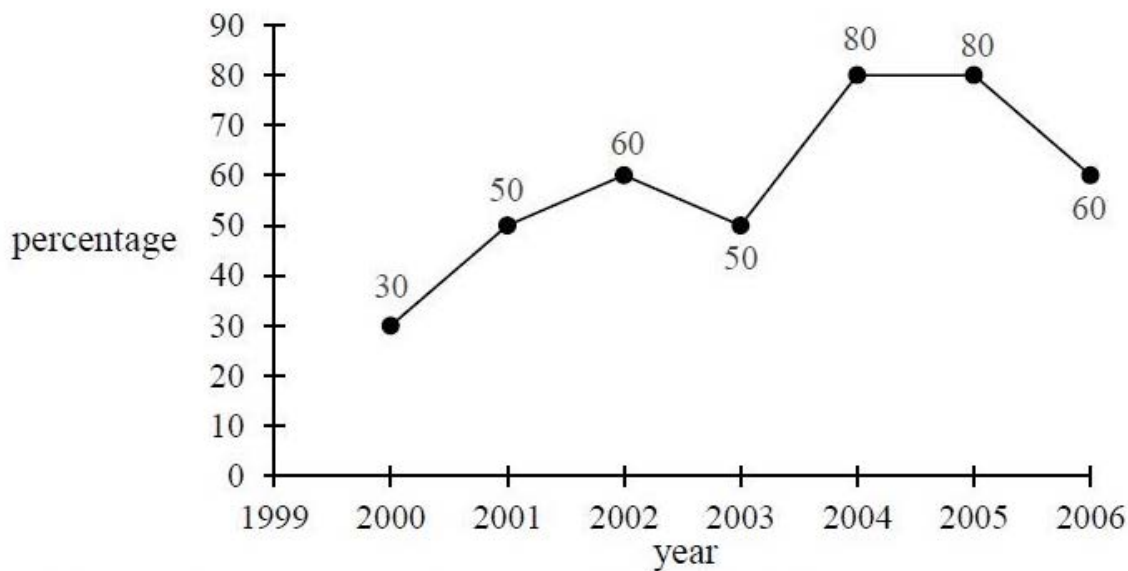
3. 53000

4. 48250

Question Number : 62 Question Id : 62321710018 Question Type : MCQ Option Shuffling : Yes Display Question Number : Yes Single Line Question Option : No Option Orientation : Vertical

Wrong Marks : 0

The following line graph represents the percentage of the number of qualified candidates in an examination out of the total number of candidates appeared in that examination for the corresponding year. Based on the information for the years 2000 to 2006, answer the question below.



If the total number of qualified candidates in 2005 and 2006 together was 33500 and the number of candidates appeared in 2005 was 26500, then the number of candidates appeared for the examination in 2006 was

Options :

1. 20500

2. 20000

3. 22500

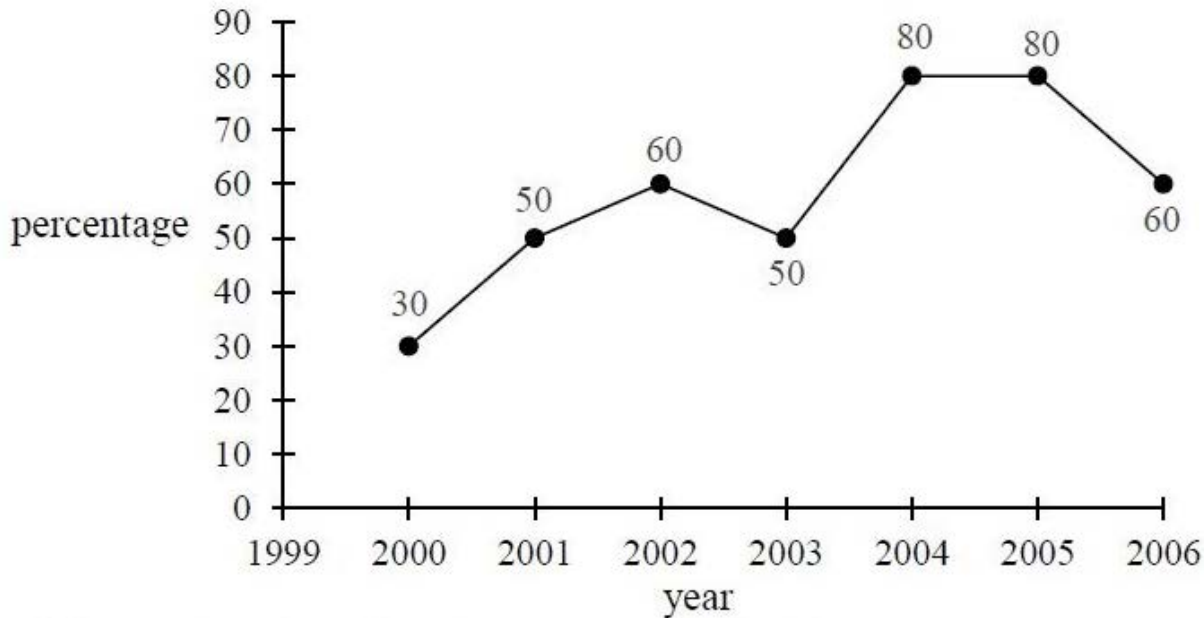
4. 24050

Question Number : 63 Question Id : 62321710019 Question Type : MCQ Option Shuffling : Yes Display Question Number : Yes Single Line Question Option : No Option Orientation : Vertical



Wrong Marks : 0

The following line graph represents the percentage of the number of qualified candidates in an examination out of the total number of candidates appeared in that examination for the corresponding year. Based on the information for the years 2000 to 2006, answer the question below.



If the total number of candidates appeared for the years 2001 and 2003 put together was 20000 and the number of qualified candidates in 2001 was 7550, then the number of qualified candidates in 2003 was

Options :

1. 2400
2. 2450
3. 4900
4. 7550

Sub-Section Number: 5  
Sub-Section Id: 623217335  
Question Shuffling Allowed : Yes

Question Number : 64 Question Id : 62321710020 Question Type : MCQ Option Shuffling : Yes Display Question Number : Yes  
Single Line Question Option : No Option Orientation : Vertical

Wrong Marks : 0

# The full form of USB

Options :

1. University Security Block
2. United Serial Bus
3. Universal Serial Bus
4. Ultra Security Block

Question Number : 65 Question Id : 62321710021 Question Type : MCQ Option Shuffling : Yes Display Question Number : Yes  
Single Line Question Option : No Option Orientation : Vertical

Wrong Marks : 0

# An unsolicited e-mail message sent to many recipients at once is a

Options :

1. Worm
2. Virus
3. Threat
4. Spam

Question Number : 66 Question Id : 62321710022 Question Type : MCQ Option Shuffling : Yes Display Question Number : Yes  
Single Line Question Option : No Option Orientation : Vertical

Wrong Marks : 0

# The full form of MOOC is

Options :

1. Massive Open Online Course

2. Massive Online Open Course

3. Massive Original Online Course

4. Massive Oriented Online Course

Question Number : 67 Question Id : 62321710023 Question Type : MCQ Option Shuffling : Yes Display Question Number : Yes  
Single Line Question Option : No Option Orientation : Vertical  
Wrong Marks : 0

TCP/IP is necessary if one is to connect to the

Options :

1. Phone lines

2. LAN

3. Internet

4. Server

Question Number : 68 Question Id : 62321710024 Question Type : MCQ Option Shuffling : Yes Display Question Number : Yes  
Single Line Question Option : No Option Orientation : Vertical  
Wrong Marks : 0

“SWAYAM” platform is developed by

Options :

1. MHRD with the help of Microsoft

2. AICTE with the help of Microsoft

3. MHRD and AICTE with the help of Microsoft

4. UGC with the help of Microsoft

Question Number : 69 Question Id : 62321710025 Question Type : MCQ Option Shuffling : Yes Display Question Number : Yes  
Single Line Question Option : No Option Orientation : Vertical

Wrong Marks : 0

The digital repository of Indian Electronic Theses and Dissertations “Shodhganga” set up by

Options :

1. INFLIBNET Centre

2. NPTEL

3. UGC

4. AICTE

Question Number : 70 Question Id : 62321710026 Question Type : MCQ Option Shuffling : Yes Display Question Number : Yes  
Single Line Question Option : No Option Orientation : Vertical

Wrong Marks : 0

The following is not the benefit of ICT Governance.

Options :

1. Increase transparency

2. Higher availability of public domain information

3. Increase efficiency due to connectivity

4. Reduce security of information



Question Number : 71 Question Id : 62321710027 Question Type : MCQ Option Shuffling : Yes Display Question Number : Yes  
Single Line Question Option : No Option Orientation : Vertical

Wrong Marks : 0

Which of the following enable one to send the same letter to different persons in  
MSWORD

Options :

1. Mail join

2. Mail copy

3. Mail insert

4. Mail merge

Question Number : 72 Question Id : 62321710028 Question Type : MCQ Option Shuffling : Yes Display Question Number : Yes  
Single Line Question Option : No Option Orientation : Vertical

Wrong Marks : 0

Which of the following is not a/an image/graphic format?

Options :

1. PNG

2. GIF

3. BMP

4. GUI

Question Number : 73 Question Id : 62321710029 Question Type : MCQ Option Shuffling : Yes Display Question Number : Yes  
Single Line Question Option : No Option Orientation : Vertical

Wrong Marks : 0

Which of the following statements is related to sustainability

Options :

1. It refers to a process or state that can be maintained indefinitely.
2. Natural resources must be used in ways that create ecological debts.
3. Consumption of the total natural capital stock.
4. None of the other options

Question Number : 74 Question Id : 62321710030 Question Type : MCQ Option Shuffling : Yes Display Question Number : Yes  
Single Line Question Option : No Option Orientation : Vertical

Wrong Marks : 0

Contaminated substances which leak into ground and carried by filtration into ground water is known as

Options :

1. Air pollution
2. Water pollution
3. Noise pollution
4. Land contamination

Question Number : 75 Question Id : 62321710031 Question Type : MCQ Option Shuffling : Yes Display Question Number : Yes  
Single Line Question Option : No Option Orientation : Vertical

Wrong Marks : 0

When was the problem of ozone depletion first identified?

Options :

1. 1970
2. 1971

1972

3.

1973

4.

Question Number : 76 Question Id : 62321710032 Question Type : MCQ Option Shuffling : Yes Display Question Number : Yes  
Single Line Question Option : No Option Orientation : Vertical

Wrong Marks : 0

Why is the runoff from fertilized agricultural fields, even if free of pesticides, often harmful to the ecosystems of temperate lakes?

Options :

1. The fertilizer promotes the growth of fish to the point where they cannot find enough food to eat.

2. The runoff causes a surface algal bloom, which reduces the penetration of light into the water reducing photosynthesis and thereby which reducing the amount of oxygen in the water.

3. Fertilizer runoff promotes antibiotic resistance

4. The runoff raises the levels of inorganic nutrients in the surface waters to levels that are toxic for algae and other lake organisms.

Question Number : 77 Question Id : 62321710033 Question Type : MCQ Option Shuffling : Yes Display Question Number : Yes  
Single Line Question Option : No Option Orientation : Vertical

Wrong Marks : 0

Sulphur - rich fossil fuels \_\_\_\_\_.

Options :

1. Cause less harm to the environment than other fossil fuels

2. Contribute to global cooling

3. Deplete the ozone layer

4. Contribute to acid rain

Question Number : 78 Question Id : 62321710034 Question Type : MCQ Option Shuffling : Yes Display Question Number : Yes  
Single Line Question Option : No Option Orientation : Vertical

Wrong Marks : 0

The most nuclear fuel used in the world is \_\_\_\_\_.

Options :

1. Thorium-232

2. Uranium-238

3. Uranium-235

4. Plutonium-239

Question Number : 79 Question Id : 62321710035 Question Type : MCQ Option Shuffling : Yes Display Question Number : Yes  
Single Line Question Option : No Option Orientation : Vertical

Wrong Marks : 0

Boiling water reactor and pressurised water reactors are

Options :

1. Solar reactor

2. OTEC

3. Biogas reactor

4. Nuclear reactor



Question Number : 80 Question Id : 62321710036 Question Type : MCQ Option Shuffling : Yes Display Question Number : Yes  
Single Line Question Option : No Option Orientation : Vertical

Wrong Marks : 0

Which is known as seismic wave?

Options :

1. Tsunami
2. Hurricane
3. Typhoon
4. El Nino

Question Number : 81 Question Id : 62321710037 Question Type : MCQ Option Shuffling : Yes Display Question Number : Yes  
Single Line Question Option : No Option Orientation : Vertical

Wrong Marks : 0

With minor exception, which of the following has been phased out completely globally?

Options :

1. Carbon dioxide
2. Carbon monoxide
3. Chlorofluorocarbons
4. Nitrogen dioxide

Question Number : 82 Question Id : 62321710038 Question Type : MCQ Option Shuffling : Yes Display Question Number : Yes  
Single Line Question Option : No Option Orientation : Vertical

Wrong Marks : 0

In which medium were instructions given in the Buddhist system of education.

Options :



1. Sanskrit

2. Hindi

3. Pali

4. None of the other options

Question Number : 83 Question Id : 62321710039 Question Type : MCQ Option Shuffling : Yes Display Question Number : Yes  
Single Line Question Option : No Option Orientation : Vertical

Wrong Marks : 0

Prime Minister Research Fellowship is for students pursuing Ph.D programme in \_\_\_\_\_ organization.

Options :

1. State and Central universities

2. Central Universities, IISc, IITs, NITs

3. IISc, IITs, NITs, IISERS, IITs, State and Central Universities

4. IITs and IISC

Question Number : 84 Question Id : 62321710040 Question Type : MCQ Option Shuffling : Yes Display Question Number : Yes  
Single Line Question Option : No Option Orientation : Vertical

Wrong Marks : 0

The University Grants Commission was established with which of the following aims?

a) Promotion of research and development in higher education

b) Identifying and sustaining institutions of potential learning

c) Capacity building of teachers

d) Providing autonomy to each and every higher educational institutions in India

Options :

1. (a), (b), (c) and (d)

2. (a), (b), (c)

3. (b), (c), (d)

4. (a), (b), (d)

Question Number : 85 Question Id : 62321710041 Question Type : MCQ Option Shuffling : Yes Display Question Number : Yes  
Single Line Question Option : No Option Orientation : Vertical  
Wrong Marks : 0

The first Open University in India was set up in the state of

Options :

1. Andhra Pradesh

2. Delhi

3. Tamil Nadu

4. Kerala

Question Number : 86 Question Id : 62321710042 Question Type : MCQ Option Shuffling : Yes Display Question Number : Yes  
Single Line Question Option : No Option Orientation : Vertical  
Wrong Marks : 0

The study of interaction between living and non-living organisms and environment is called

Options :

1. Ecosystem

2. Ecology

3. Phytogeography

4. Phytosociology

Question Number : 87 Question Id : 62321710043 Question Type : MCQ Option Shuffling : Yes Display Question Number : Yes  
Single Line Question Option : No Option Orientation : Vertical

Wrong Marks : 0

Kothari Commission report was submitted to the Government in the year

Options :

1. 1960

2. 1966

3. 1968

4. 1970

Question Number : 88 Question Id : 62321710044 Question Type : MCQ Option Shuffling : Yes Display Question Number : Yes  
Single Line Question Option : No Option Orientation : Vertical

Wrong Marks : 0

Common Wealth of learning focussed on promoting

Options :

1. economic development by providing education and teaching skills.

2. knowledge

3. personality development

communication skills.

4.

Question Number : 89 Question Id : 62321710045 Question Type : MCQ Option Shuffling : Yes Display Question Number : Yes  
Single Line Question Option : No Option Orientation : Vertical

Wrong Marks : 0

Under CBCS, which of the following is not regarded as a “programme”?

Options :

Certificate

1.

Diploma

2.

Degree

3.

None of the other options

4.

Question Number : 90 Question Id : 62321710046 Question Type : MCQ Option Shuffling : Yes Display Question Number : Yes  
Single Line Question Option : No Option Orientation : Vertical

Wrong Marks : 0

Extension of inference is called

Options :

Observation

1.

Conclusions

2.

Analysis

3.

Hypothesis

4.



<b>Section Number :</b>	2
<b>Section type :</b>	Online
<b>Mandatory or Optional:</b>	Mandatory
<b>Number of Questions:</b>	90
<b>Number of Questions to be attempted:</b>	90
<b>Section Marks:</b>	90
<b>Display Number Panel:</b>	Yes
<b>Group All Questions:</b>	No

<b>Sub-Section Number:</b>	1
<b>Sub-Section Id:</b>	623217336
<b>Question Shuffling Allowed :</b>	Yes

**Question Number : 91 Question Id : 62321710047 Question Type : MCQ Option Shuffling : Yes Display Question Number : Yes**  
**Single Line Question Option : No Option Orientation : Vertical**

**Wrong Marks : 0**

Input about the physical world provided by our sensory receptors are called as.

**Options :**

1. Perception
2. Sensation
3. stimuli
4. Illusion

**Question Number : 92 Question Id : 62321710048 Question Type : MCQ Option Shuffling : Yes Display Question Number : Yes**  
**Single Line Question Option : No Option Orientation : Vertical**

**Wrong Marks : 0**

The smallest amount of a stimulus that we can detect perfectly by 50% of the time is called as

**Options :**

1. Minimal threshold
2. differential threshold
3. absolute threshold
4. sensory threshold

**Question Number : 93 Question Id : 62321710049 Question Type : MCQ Option Shuffling : Yes Display Question Number : Yes**  
**Single Line Question Option : No Option Orientation : Vertical**

**Wrong Marks : 0**

Reduction in sensitivity to repeated exposure to unchanged stimuli over time is called as

Options :

1. Sensory Tolerance
2. Sensory adaptation
3. sensory accommodation
4. sensory withdrawal

Question Number : 94 Question Id : 62321710050 Question Type : MCQ Option Shuffling : Yes Display Question Number : Yes  
Single Line Question Option : No Option Orientation : Vertical

Wrong Marks : 0

Which are the sensory receptors found in the eyes?

i) Iris ii) rods iii) Cornea iv) cones

Options :

1. i and ii
2. i and iii
3. iii and iv
4. ii and iv

Question Number : 95 Question Id : 62321710051 Question Type : MCQ Option Shuffling : Yes Display Question Number : Yes  
Single Line Question Option : No Option Orientation : Vertical

Wrong Marks : 0

Which of the following are NOT laws of perceptual grouping.

i) Continuation ii) Similarity iii) Figure-ground iv) Simplicity

Options :

1. i only
2. iii only

3. i and iii

4. ii and iv

Question Number : 96 Question Id : 62321710052 Question Type : MCQ Option Shuffling : Yes Display Question Number : Yes  
Single Line Question Option : No Option Orientation : Vertical

Wrong Marks : 0

Identify the correct pathway sequence for hearing.

Options :

1. Pinna – Tympanic membrane – oval window – incus – malleus – stapes – cochlea
2. Pinna - oval window – incus – malleus - Tympanic membrane – stapes – cochlea
3. Pinna – Tympanic membrane – malleus – incus – stapes – oval window – cochlea
4. Pinna – Tympanic membrane – oval window - malleus – incus – stapes – cochlea

Question Number : 97 Question Id : 62321710053 Question Type : MCQ Option Shuffling : Yes Display Question Number : Yes  
Single Line Question Option : No Option Orientation : Vertical

Wrong Marks : 0

Then full form of NLP is \_\_\_\_\_

Options :

1. Neuro linguistic programming
2. Neuro learning programming
3. Neuro linguistic planning
4. Non learning programming

Question Number : 98 Question Id : 62321710054 Question Type : MCQ Option Shuffling : Yes Display Question Number : Yes  
Single Line Question Option : No Option Orientation : Vertical

Wrong Marks : 0

Match the following

- |    |            |   |  |
|----|------------|---|--|
| 1) | Wavelength | - | i) Physical intensity of light             |
| 2) | Hue        | - | ii) Purity of colour                       |
| 3) | Brightness | - | iii) Peak to peak distance in a light wave |
| 4) | Saturation | - | iv) Colour due to dominant wavelength      |

Options :

- |    |       |      |      |       |
|----|-------|------|------|-------|
| 1. | 1-iii | 2-i  | 3-iv | 4-ii  |
| 2. | 1-iii | 2-ii | 3-i  | 4-iv  |
| 3. | 1-iii | 2-iv | 3-i  | 4-ii  |
| 4. | 1-i   | 2-ii | 3-iv | 4-iii |

Question Number : 99 Question Id : 62321710055 Question Type : MCQ Option Shuffling : Yes Display Question Number : Yes  
Single Line Question Option : No Option Orientation : Vertical

Wrong Marks : 0

Match the following laws.

- |    |            |   |  |
|----|------------|---|--|
| 1. | Similarity | - | i. perceive items located together as a group                |
| 2. | Proximity  | - | ii. perceive objects as whole entities despite missing parts |
| 3. | Closure    | - | iii. perceive complex patterns as a simpler shapes           |
| 4. | Simplicity | - | iv. perceive similar items as groups                         |

Options :

- |    |       |      |      |       |
|----|-------|------|------|-------|
| 1. | 1-iv  | 2-i  | 3-ii | 4-iii |
| 2. | 1-iv  | 2-ii | 3-i  | 4-iii |
| 3. | 1-iii | 2-i  | 3-ii | 4-iv  |
| 4. | 1-iii | 2-ii | 3-i  | 4-iv  |

Question Number : 100 Question Id : 62321710056 Question Type : MCQ Option Shuffling : Yes Display Question Number : Yes  
Single Line Question Option : No Option Orientation : Vertical

Wrong Marks : 0

Any relatively permanent changes in behaviour resulting from experience is.



Options :

1. Perception
2. learning
3. abnormality
4. Personality

Question Number : 101 Question Id : 62321710057 Question Type : MCQ Option Shuffling : Yes Display Question Number : Yes  
Single Line Question Option : No Option Orientation : Vertical

Wrong Marks : 0

A procedure that establish a sequence of responses, which lead to a reward following the final response.

Options :

1. Chaining
2. shaping
3. flooding
4. mirroring

Question Number : 102 Question Id : 62321710058 Question Type : MCQ Option Shuffling : Yes Display Question Number : Yes  
Single Line Question Option : No Option Orientation : Vertical

Wrong Marks : 0

A technique that is employed to strengthen a specific behaviour is

- i) Positive reinforcement
- ii) Positive punishment
- iii) Negative reinforcement
- iv) Negative punishment

Options :

1. i only
2. i and ii
3. i and iii

4. i, ii and iii

Question Number : 103 Question Id : 62321710059 Question Type : MCQ Option Shuffling : Yes Display Question Number : Yes  
Single Line Question Option : No Option Orientation : Vertical

Wrong Marks : 0

A technique that enables people to monitor and self-regulate certain bodily functions through special equipment is

i) Meditation ii) biofeedback iii) Yoga iv) EEG

Options :

1. i only

2. ii only

3. i and ii

4. i, ii, iii and iv

Question Number : 104 Question Id : 62321710060 Question Type : MCQ Option Shuffling : Yes Display Question Number : Yes  
Single Line Question Option : No Option Orientation : Vertical

Wrong Marks : 0

The learning through exposure to others and the consequences they experience is

i) Classical conditioning ii) operand conditioning iii) observational learning iv) Self learning

Options :

1. i only

2. ii only

3. iii only

4. iv only

Question Number : 105 Question Id : 62321710061 Question Type : MCQ Option Shuffling : Yes Display Question Number : Yes  
Single Line Question Option : No Option Orientation : Vertical

Wrong Marks : 0

Identify the correct sequence for classical conditioning.

Options :

1. Neutral stimulus – Unconditioned response – unconditioned stimulus – conditioned response.

2. Neutral stimulus –unconditioned stimulus – conditioned response - Unconditioned response.

3. Neutral stimulus –unconditioned stimulus – Unconditioned response –conditioned response.

4. Neutral stimulus – conditioned response - Unconditioned response – unconditioned stimulus.

Question Number : 106 Question Id : 62321710062 Question Type : MCQ Option Shuffling : Yes Display Question Number : Yes  
Single Line Question Option : No Option Orientation : Vertical

Wrong Marks : 0

Identify the correct sequence for strengthening behaviour in operant conditioning.

Options :

1. Stimulus – response – presenting desirable stimulus – decrease the strength of behaviour

2. Stimulus – response – removing undesirable stimulus - increase the strength of behaviour

3. Response – stimulus - presenting desirable stimulus - decrease the strength of behaviour

4. presenting desirable stimulus - Stimulus – response - increase the strength of behaviour

Question Number : 107 Question Id : 62321710063 Question Type : MCQ Option Shuffling : Yes Display Question Number : Yes  
Single Line Question Option : No Option Orientation : Vertical

Wrong Marks : 0

Match the following

1) Reconditioning - i. Tendency of a stimuli similar to a CS to evoke CR

2) Spontaneous recovery - ii. Learning to respond to certain stimulus.

3) Stimulus generalization - iii. Return of CR upon reinstatement of CS-UCS pairing

4) Stimulus discrimination – iv. Rapid recovery of CR to a CS-UCS pairing

Options :

1. 1-iii 2-iv 3-i 4-ii

2. 1-iv 2-iii 3-i 4-ii

3. 1-iv 2-iii 3-ii 4-i



4. 1-iii 2-iv 3-ii 4-i

Question Number : 108 Question Id : 62321710064 Question Type : MCQ Option Shuffling : Yes Display Question Number : Yes  
Single Line Question Option : No Option Orientation : Vertical

Wrong Marks : 0

Match the following schedules of reinforcement

- 1) Fixed interval - i. reinforcement occurs after fixed number of responses emitted
- 2) Variable interval - ii. reinforcement delivered after variable number of responses emitted
- 3) Fixed ratio - iii. specific time interval must elapse before a response will yield reinforcement
- 4) Variable ratio - iv. variable time interval must elapse before response will yield reinforcement

Options :

1. 1-i 2-ii 3-iii 4-iv
2. 1-ii 2-i 3-iv 4-iii
3. 1-iv 2-iii 3-ii 4-i
4. 1-iii 2-iv 3-i 4-ii

Question Number : 109 Question Id : 62321710065 Question Type : MCQ Option Shuffling : Yes Display Question Number : Yes  
Single Line Question Option : No Option Orientation : Vertical

Wrong Marks : 0

General, abstract knowledge about the world is

Options :

1. Semantic memory
2. episodic memory
3. Procedural memory
4. Non declarative

Question Number : 110 Question Id : 62321710066 Question Type : MCQ Option Shuffling : Yes Display Question Number : Yes  
Single Line Question Option : No Option Orientation : Vertical

Wrong Marks : 0

A memory system that retains a large amount of information over a period of time.



Options :

1. Sensory memory
2. short term memory
3. working memory
4. long term memory

Question Number : 111 Question Id : 62321710067 Question Type : MCQ Option Shuffling : Yes Display Question Number : Yes  
Single Line Question Option : No Option Orientation : Vertical

Wrong Marks : 0

Stimuli associated with information stored in memory that can aid in its retrieval.

Options :

1. Emotion
2. sensation
3. cues
4. subliminal perception

Question Number : 112 Question Id : 62321710068 Question Type : MCQ Option Shuffling : Yes Display Question Number : Yes  
Single Line Question Option : No Option Orientation : Vertical

Wrong Marks : 0

The memory system where the information are stored only for a short period.

a) Sensory memory b) STM c) LTM d) Working memory

Options :

1. b only
2. a only
3. b and d
4. c and d

Question Number : 113 Question Id : 62321710069 Question Type : MCQ Option Shuffling : Yes Display Question Number : Yes  
Single Line Question Option : No Option Orientation : Vertical

Wrong Marks : 0

Cognitive frameworks representing our knowledge and assumptions about specific aspects of world.

- a) Concepts   b) Themes   c) schemas   d) template

Options :

1. a only

2. c only

3. b and c

4. a and d

Question Number : 114 Question Id : 62321710070 Question Type : MCQ Option Shuffling : Yes Display Question Number : Yes  
Single Line Question Option : No Option Orientation : Vertical

Wrong Marks : 0

Identify the right sequence for multi store model of memory.

Options :

1. Stimuli – Sensory memory – STM – Attention – LTM – rehearsal

2. Stimuli – Sensory memory - Attention – rehearsal – STM – LTM

3. Stimuli – Attention – Sensory memory – Rehearsal – STM – LTM

4. Stimuli – Sensory memory - Attention – STM – Rehearsal – LTM

Question Number : 115 Question Id : 62321710071 Question Type : MCQ Option Shuffling : Yes Display Question Number : Yes  
Single Line Question Option : No Option Orientation : Vertical

Wrong Marks : 0

What is the correct sequence explaining retroactive interference?

Options :

1. Learning A - time – learning B – forgetting learning B

2. Learning A - time – learning B – forgetting learning A

3. Learning A - learning B – forgetting learning B - time

#### 4. Learning A - learning B – forgetting learning A- time

Question Number : 116 Question Id : 62321710072 Question Type : MCQ Option Shuffling : Yes Display Question Number : Yes  
Single Line Question Option : No Option Orientation : Vertical

Wrong Marks : 0

Match the following

- 1) Retro grade amnesia – i) Inability to form new memories after the onset of disease
- 2) Anterograde amnesia – ii) Complete loss of memory present before the onset of disease.
- 3) Alzhiemer’s disease – iii) Old age illness with severe mental deterioration
- 4) Korsakoff’s syndrome – iv) Memory loss due to alcohol abuse.

Options :

1. 1-i 2-ii 3-iii 4-iv

2. 1-i 2-ii 3-iv 4-iii

3. 1-ii 2-i 3-iv 4-iii

4. 1-ii 2-i 3-iii 4-iv

Question Number : 117 Question Id : 62321710073 Question Type : MCQ Option Shuffling : Yes Display Question Number : Yes  
Single Line Question Option : No Option Orientation : Vertical

Wrong Marks : 0

Match the following

- 1) Retroactive interference i) eliminating threatening memory from consciousness
- 2) Proactive interference – ii) old information affects new information
- 3) Repression - iii) New information affects old information
- 4) Intentional forgetting – iv) effort to remove information from LTM that are no longer useful

Options :

1. 1-iii 2-ii 3-i 4-iv

2. 1-ii 2-iii 3-iv 4-i

3. 1-ii 2-iii 3-i 4-iv

4. 1-iii 2-ii 3-iv 4-i

Question Number : 118 Question Id : 62321710074 Question Type : MCQ Option Shuffling : Yes Display Question Number : Yes  
Single Line Question Option : No Option Orientation : Vertical



Wrong Marks : 0

Mental categories for objects or events that are similar to one another in certain respects.

Options :

1. Sets
2. Themes
3. concepts
4. templates

Question Number : 119 Question Id : 62321710075 Question Type : MCQ Option Shuffling : Yes Display Question Number : Yes  
Single Line Question Option : No Option Orientation : Vertical

Wrong Marks : 0

The mental process associated with thought, knowledge and memory.

Options :

1. Problem solving
2. cognition
3. intelligence
4. executive function

Question Number : 120 Question Id : 62321710076 Question Type : MCQ Option Shuffling : Yes Display Question Number : Yes  
Single Line Question Option : No Option Orientation : Vertical

Wrong Marks : 0

\_\_\_\_\_ have no fixed or readily specified set of defining features.

i) Natural concepts ii) Artificial concepts iii) mental set iv) schemas

Options :

1. i) only
2. ii) only
3. i) and iii)



4. ii) and iv)

Question Number : 121 Question Id : 62321710077 Question Type : MCQ Option Shuffling : Yes Display Question Number : Yes  
Single Line Question Option : No Option Orientation : Vertical

Wrong Marks : 0

The clearest examples of various objects or stimuli in the physical world is.

i) Concepts ii) schemas iii) prototype iv) template

Options :

1. i and ii

2. iii and iv

3. i and iii

4. ii and iv

Question Number : 122 Question Id : 62321710078 Question Type : MCQ Option Shuffling : Yes Display Question Number : Yes  
Single Line Question Option : No Option Orientation : Vertical

Wrong Marks : 0

Cognitive activity that transforms information in order to reach specific conclusion is.

i) Deductive reasoning ii) inductive reasoning iii) syllogistic reasoning iv) Verbal reasoning

Options :

1. i) only

2. i and ii

3. i, ii and iv

4. i, ii, iii and iv

Question Number : 123 Question Id : 62321710079 Question Type : MCQ Option Shuffling : Yes Display Question Number : Yes  
Single Line Question Option : No Option Orientation : Vertical

Wrong Marks : 0

Identify the correct sequence in stages of problem solving

Options :

Analyze the problem – problem identification – solution implementation – solution

1. development – solution evaluation

2. Problem identification - Analyze the problem - solution development – solution evaluation - solution implementation.

3. Problem identification - Analyze the problem - solution development - solution implementation – solution evaluation.

4. Problem identification - Analyze the problem – solution evaluation - solution development - solution implementation.

Question Number : 124 Question Id : 62321710080 Question Type : MCQ Option Shuffling : Yes Display Question Number : Yes  
Single Line Question Option : No Option Orientation : Vertical  
Wrong Marks : 0

Identify the correct sequence for inductive reasoning.

Options :

1. Observation – hypothesis – pattern – theory

2. Observation – pattern – hypothesis – theory

3. Theory - Observation – hypothesis – pattern

4. Theory - hypothesis – Observation – pattern

Question Number : 125 Question Id : 62321710081 Question Type : MCQ Option Shuffling : Yes Display Question Number : Yes  
Single Line Question Option : No Option Orientation : Vertical  
Wrong Marks : 0

Match the following

- |                           |   |
|---------------------------|---|
| 1) Trial and error        | i) rule that guarantees a solution to specific type of problem                  |
| 2) Algorithm              | ii) problem is divided into parts and the parts are solved to solve the problem |
| 3) Means and end analysis | iii) problems solved using strategies of similar problems.                      |
| 4) Analogy                | iv) Possible solutions are tried till succeeds                                  |

Options :

1. 1-iii 2-ii 3-iv 4-i

2. 1-iv 2-i 3-ii 4-iii

3. 1-ii 2-iii 3-iv 4-i

4. 1-i 2-iii 3-iv 4-ii

Question Number : 126 Question Id : 62321710082 Question Type : MCQ Option Shuffling : Yes Display Question Number : Yes  
Single Line Question Option : No Option Orientation : Vertical

Wrong Marks : 0

Match the following.

- |                         |   |
|-------------------------|---|
| 1) Functional fixedness | i) Influence of past experience in present problem                        |
| 2) Mental set           | ii) Tendency to think of using objects only as used in past               |
| 3) Confirmation bias    | iii) Judging events as more predictable after the occurrence of the event |
| 4) Hindsight effect     | iv) Attending to information that confirms existing views                 |

Options :

1. 1-ii 2-i 3-iv 4-iii

2. 1-i 2-ii 3-iii 4-iv

3. 1-ii 2-i 3-iii 4-iv

4. 1-iv 2-ii 3-i 4-iii

Question Number : 127 Question Id : 62321710083 Question Type : MCQ Option Shuffling : Yes Display Question Number : Yes  
Single Line Question Option : No Option Orientation : Vertical

Wrong Marks : 0

The pattern of behaviour assumed to be universal in a species is called as.

Options :

1. Personality

2. Genetics

3. instincts

4. learning

Question Number : 128 Question Id : 62321710084 Question Type : MCQ Option Shuffling : Yes Display Question Number : Yes  
Single Line Question Option : No Option Orientation : Vertical

Wrong Marks : 0

A state of physiological balance within the body.

Options :

1. Homeostasis
2. equilibrium
3. adaptation
4. evolution

Question Number : 129 Question Id : 62321710085 Question Type : MCQ Option Shuffling : Yes Display Question Number : Yes  
Single Line Question Option : No Option Orientation : Vertical

Wrong Marks : 0

The suggestion that the level of arousal beyond which performance begins to decline is a function of task difficulty is \_\_\_\_\_

Options :

1. Murphy's law
2. Weber's law
3. Yerkes-Dodson law
4. Fechner's law

Question Number : 130 Question Id : 62321710086 Question Type : MCQ Option Shuffling : Yes Display Question Number : Yes  
Single Line Question Option : No Option Orientation : Vertical

Wrong Marks : 0

The primary need according to hierarchy needs includes.

i) Food ii) water iii) sex iv) safety

Options :

1. i only
2. i and ii
3. i, ii and iii
4. i, ii, iii and iv



Question Number : 131 Question Id : 62321710087 Question Type : MCQ Option Shuffling : Yes Display Question Number : Yes  
Single Line Question Option : No Option Orientation : Vertical

Wrong Marks : 0

The desire to accomplish difficult tasks and meet standards of excellence is \_\_\_\_\_

i) Need for recognition ii) need for achievement iii) need for popularity iv) need for acceptance.

Options :

1. ii only
2. i and ii
3. iv only
4. iii and iv

Question Number : 132 Question Id : 62321710088 Question Type : MCQ Option Shuffling : Yes Display Question Number : Yes  
Single Line Question Option : No Option Orientation : Vertical

Wrong Marks : 0

Identify the correct sequence for need hierarchy theory.

Options :

1. Biological needs – belonging needs – safety needs – esteem needs – actualization needs
2. Biological needs – safety needs - belonging needs – esteem needs – actualization needs
3. Biological needs – safety needs – esteem needs - belonging needs– actualization needs
4. Biological needs - belonging needs – esteem needs —safety needs - actualization needs

Question Number : 133 Question Id : 62321710089 Question Type : MCQ Option Shuffling : Yes Display Question Number : Yes  
Single Line Question Option : No Option Orientation : Vertical

Wrong Marks : 0

Identify the correct sequence for Schachter – Singer Theory.

Options :

1. Event – reasoning – arousal – emotion
2. Event – emotion – reasoning – arousal
3. Event – reasoning– emotion – arousal

## Event – arousal –reasoning –emotion

4.

Question Number : 134 Question Id : 62321710090 Question Type : MCQ Option Shuffling : Yes Display Question Number : Yes  
Single Line Question Option : No Option Orientation : Vertical

Wrong Marks : 0

Match the following

- |                    |   |
|--------------------|---|
| 1) Body language   | i) A persons current mood                                   |
| 2) Gestures        | ii) Quick and true facial expression reacting to events     |
| 3) Affect          | iii) Movements of body parts that convey a specific meaning |
| 4) Microexpression | iv) Non-verbal cues involving body postures.                |

Options :

- |    |       |       |      |      |
|----|-------|-------|------|------|
| 1. | 1-iv  | 2-iii | 3-i  | 4-ii |
| 2. | 1-iii | 2-iv  | 3-ii | 4-i  |
| 3. | 1-ii  | 2-iii | 3-i  | 4-iv |
| 4. | 1-iv  | 2-iii | 3-ii | 4-i  |

Question Number : 135 Question Id : 62321710091 Question Type : MCQ Option Shuffling : Yes Display Question Number : Yes  
Single Line Question Option : No Option Orientation : Vertical

Wrong Marks : 0

Match the following.

- |                          |  |
|--------------------------|--|
| 1) Aggression            | i) the desire to harm or injure others in some manner      |
| 2) Aggressive motivation | ii) Violent outburst where they harm their colleague       |
| 3) Frustration           | iii) Behaviour directed toward the goal of harming others. |
| 4) Workplace violence    | iv) the blocking of on-going goal directed behaviour.      |

Options :

- |    |       |       |      |      |
|----|-------|-------|------|------|
| 1. | 1-ii  | 2-iii | 3-i  | 4-iv |
| 2. | 1-iii | 2-i   | 3-iv | 4-ii |
| 3. | 1-i   | 2-iii | 3-ii | 4-iv |
| 4. | 1-iii | 2-ii  | 3-i  | 4-iv |

Question Number : 136 Question Id : 62321710092 Question Type : MCQ Option Shuffling : Yes Display Question Number : Yes  
Single Line Question Option : No Option Orientation : Vertical

Wrong Marks : 0

Individual's ability to understand the complex ideas, to adapt effectively to environment, to learn from experience, to engage in various forms of reasoning, to overcome obstacles by careful thought is \_\_\_\_\_

Options :

1. Reasoning
2. cognition
3. executive functions
4. intelligence

Question Number : 137 Question Id : 62321710093 Question Type : MCQ Option Shuffling : Yes Display Question Number : Yes  
Single Line Question Option : No Option Orientation : Vertical

Wrong Marks : 0

The triarchic theory of intelligence was proposed by \_\_\_\_\_

Options :

1. Sternberg
2. Spearman
3. Thurstone
4. Guilford

Question Number : 138 Question Id : 62321710094 Question Type : MCQ Option Shuffling : Yes Display Question Number : Yes  
Single Line Question Option : No Option Orientation : Vertical

Wrong Marks : 0

Identify the components of Stanford – Binet test.

i) Reasoning    ii) Short term memory    iii) Attention    iv) Interest

Options :

1. i only
2. i and ii



3. i and iii

4. ii and iv

Question Number : 139 Question Id : 62321710095 Question Type : MCQ Option Shuffling : Yes Display Question Number : Yes  
Single Line Question Option : No Option Orientation : Vertical

Wrong Marks : 0

Which of the following are performance tests.

i) Block design ii) Digit span iii) similarities iv) object assembly

Options :

1. i and ii

2. ii and iii

3. i and iv

4. ii and iv

Question Number : 140 Question Id : 62321710096 Question Type : MCQ Option Shuffling : Yes Display Question Number : Yes  
Single Line Question Option : No Option Orientation : Vertical

Wrong Marks : 0

Which of the following are considered to be intellectual disability disorders.

i) Mental retardation ii) Down Syndrome iii) ADHD iv) Autism

Options :

1. i only

2. i and ii

3. i, ii, and iii

4. i, ii, iii, iv

Question Number : 141 Question Id : 62321710097 Question Type : MCQ Option Shuffling : Yes Display Question Number : Yes  
Single Line Question Option : No Option Orientation : Vertical

Wrong Marks : 0

Identify the correct sequence for the degree of MR in ascending order of their IQ score.

Options :



1. Mild – Moderate – Profound – severe
2. Profound – severe – Moderate – Mild
3. Severe – Moderate – Profound – Mild
4. Mild – Moderate – severe - Profound

Question Number : 142 Question Id : 62321710098 Question Type : MCQ Option Shuffling : Yes Display Question Number : Yes  
Single Line Question Option : No Option Orientation : Vertical

Wrong Marks : 0

Identify the correct primary mental abilities by Thurstone.

Options :

1. Verbal comprehension – reasoning – numeric ability – Music intelligence
2. Word fluency – associative memory – practical intelligence - reasoning
3. Perceptual speed – spatial visualization – associative memory – reasoning
4. Numeric ability – word fluency – Verbal comprehension – Interpersonal intelligence.

Question Number : 143 Question Id : 62321710099 Question Type : MCQ Option Shuffling : Yes Display Question Number : Yes  
Single Line Question Option : No Option Orientation : Vertical

Wrong Marks : 0

Match the following

- |              |                               |
|--------------|-------------------------------|
| 1) Spearman  | i) Multiple intelligence      |
| 2) Thurstone | ii) Triarchic theory          |
| 3) Gardner   | iii) Primary mental abilities |
| 4) Sternberg | iv) General intelligence      |

Options :

1. 1-iv      2-iii      3-i      4-ii
2. 1-ii      2-iii      3-iv      4-i
3. 1-iv      2-i      3-ii      4-iii

4. 1-i      2-iii      3-iv      4-ii

Question Number : 144 Question Id : 62321710100 Question Type : MCQ Option Shuffling : Yes Display Question Number : Yes  
Single Line Question Option : No Option Orientation : Vertical

Wrong Marks : 0

Match the following.

- |                              |                                   |
|------------------------------|-----------------------------------|
| 1) Verbal reasoning          | i) Paper folding or copying image |
| 2) Quantitative reasoning    | ii) Number test                   |
| 3) Abstract visual reasoning | iii) Digit span                   |
| 4) Short term memory         | iv) Vocabularies                  |

Options :

1. 1-ii      2-i      3-iv      4-iii
2. 1-iv      2-i      3-iii      4-ii
3. 1-iii      2-ii      3-i      4-iv
4. 1-iv      2-ii      3-i      4-iii

Question Number : 145 Question Id : 62321710101 Question Type : MCQ Option Shuffling : Yes Display Question Number : Yes  
Single Line Question Option : No Option Orientation : Vertical

Wrong Marks : 0

Thematic Apperception Test (TAT) is a type of \_\_\_\_\_

Options :

1. Questionnaire
2. Scale
3. Projective test
4. Case study

Question Number : 146 Question Id : 62321710102 Question Type : MCQ Option Shuffling : Yes Display Question Number : Yes  
Single Line Question Option : No Option Orientation : Vertical

Wrong Marks : 0

The unconscious desire of a boy for his mother accompanied by the desire to replace his father is called \_\_\_\_\_

Options :

1. Castration anxiety
2. Penis envy
3. Electra complex
4. Oedipus complex

Question Number : 147 Question Id : 62321710103 Question Type : MCQ Option Shuffling : Yes Display Question Number : Yes  
Single Line Question Option : No Option Orientation : Vertical

Wrong Marks : 0

According to Cattell, traits possessed in some degree by all persons is called as \_\_\_\_\_

Options :

1. Primary traits
2. Cardinal traits
3. Common traits
4. Unique traits

Question Number : 148 Question Id : 62321710104 Question Type : MCQ Option Shuffling : Yes Display Question Number : Yes  
Single Line Question Option : No Option Orientation : Vertical

Wrong Marks : 0

Identify the concepts proposed by Freud.

i) Penis envy    ii) Womb envy    iii) Oedipus complex    iv) Electra complex

Options :

1. i and iii
2. i, iii and iv
3. i, ii and iii
4. i, ii, iii and iv



Question Number : 149 Question Id : 62321710105 Question Type : MCQ Option Shuffling : Yes Display Question Number : Yes  
Single Line Question Option : No Option Orientation : Vertical

Wrong Marks : 0

Identify the concepts proposed by Carl Jung.

i) Anima    ii) Archetype    iii) Introvert    iv) Extrovert

Options :

1. i only
2. i and ii
3. i, ii, and iii
4. i, ii, iii and iv

Question Number : 150 Question Id : 62321710106 Question Type : MCQ Option Shuffling : Yes Display Question Number : Yes  
Single Line Question Option : No Option Orientation : Vertical

Wrong Marks : 0

Identify the correct sequence of psychosexual stages.

Options :

1. Oral – anal – phallic – latent – genital
2. Oral – anal – latent – phallic – genital
3. Oral – latent – anal – phallic – genital
4. Oral – phallic – anal – latent – genital

Question Number : 151 Question Id : 62321710107 Question Type : MCQ Option Shuffling : Yes Display Question Number : Yes  
Single Line Question Option : No Option Orientation : Vertical

Wrong Marks : 0

Identify the components of big five personality theory.

Options :

1. Extraversion – introversion – openness – neuroticism – psychoticism
2. Extraversion – agreeableness – openness – neuroticism – psychoticism
3. Extraversion – conscientiousness – openness – neuroticism – agreeableness



4. Extraversion – conscientiousness – openness – neuroticism – psychoticism

Question Number : 152 Question Id : 62321710108 Question Type : MCQ Option Shuffling : Yes Display Question Number : Yes  
Single Line Question Option : No Option Orientation : Vertical

Wrong Marks : 0

Match the following.

- |                 |  |
|-----------------|--|
| 1) Repression   | i) Responding to threatening situation in a childish way                 |
| 2) Regression   | ii) Transferring unacceptable impulses to others                         |
| 3) Projection   | iii) Redirecting an emotional response from dangerous object to safe one |
| 4) Displacement | iv) Suppressing from consciousness to unconsciousness                    |

Options :

- |    |       |      |      |       |
|----|-------|------|------|-------|
| 1. | 1-iii | 2-ii | 3-i  | 4-iv  |
| 2. | 1-iv  | 2-i  | 3-ii | 4-iii |
| 3. | 1-iv  | 2-ii | 3-i  | 4-iii |
| 4. | 1-ii  | 2-i  | 3-iv | 4-iii |

Question Number : 153 Question Id : 62321710109 Question Type : MCQ Option Shuffling : Yes Display Question Number : Yes  
Single Line Question Option : No Option Orientation : Vertical

Wrong Marks : 0

Match the following

- |               |  |
|---------------|--|
| 1) Anima      | i) hesitant and cautious to make friends |
| 2) Animus     | ii) open and confident to make friends   |
| 3) Introverts | iii) masculine side of females           |
| 4) Extroverts | iv) feminine side of males               |

Options :

- |    |       |       |      |      |
|----|-------|-------|------|------|
| 1. | 1-iv  | 2-iii | 3-i  | 4-ii |
| 2. | 1-iii | 2-iv  | 3-i  | 4-ii |
| 3. | 1-iii | 2-iv  | 3-ii | 4-i  |
| 4. | 1-iv  | 2-iii | 3-ii | 4-i  |

Question Number : 154 Question Id : 62321710110 Question Type : MCQ Option Shuffling : Yes Display Question Number : Yes  
Single Line Question Option : No Option Orientation : Vertical

Wrong Marks : 0

The values associated with a trait or property that helps in distinguishing the occurrence of something is \_\_\_\_\_

Options :

1. Data
2. Variable
3. Information
4. Numbers

Question Number : 155 Question Id : 62321710111 Question Type : MCQ Option Shuffling : Yes Display Question Number : Yes  
Single Line Question Option : No Option Orientation : Vertical

Wrong Marks : 0

Anything that varies which are used to study the interactions to understand the phenomena is \_\_\_\_\_

Options :

1. Information
2. data
3. Variables
4. Constant

Question Number : 156 Question Id : 62321710112 Question Type : MCQ Option Shuffling : Yes Display Question Number : Yes  
Single Line Question Option : No Option Orientation : Vertical

Wrong Marks : 0

Which of the following is/are variables in the following Study. "Impact of cultural practice and belief system on perception towards remarriage of widows"

- i) Cultural practice    ii) Belief system    iii) Perception towards remarriage    iv) Widows

Options :

1. i and ii

2. i, ii and iii
3. iii only
4. i, ii, iii and iv

Question Number : 157 Question Id : 62321710113 Question Type : MCQ Option Shuffling : Yes Display Question Number : Yes  
Single Line Question Option : No Option Orientation : Vertical

Wrong Marks : 0

The level of measurement in which the order of the data can be seen.

i) Nominal ii) Ordinal iii) Interval iv) Ratio

Options :

1. ii only
2. i and ii
3. ii and iii
4. ii, iii and iv

Question Number : 158 Question Id : 62321710114 Question Type : MCQ Option Shuffling : Yes Display Question Number : Yes  
Single Line Question Option : No Option Orientation : Vertical

Wrong Marks : 0

Identify the types of probability sampling technique.

i) Convenient sampling ii) snow ball sampling iii) systematic sampling iv) Cluster sampling

Options :

1. i and ii
2. iii and iv
3. i and iii
4. ii and iv

Question Number : 159 Question Id : 62321710115 Question Type : MCQ Option Shuffling : Yes Display Question Number : Yes  
Single Line Question Option : No Option Orientation : Vertical

Wrong Marks : 0

Identify the correct sequence in research process.



**Options :**

1. Problem definition – objectives – hypothesis – data collection – Analysis – report generation
2. Problem definition – objectives – data collection – Analysis – hypothesis – report generation
3. Problem definition – objectives – hypothesis – Analysis – data collection – report generation
4. Problem definition – hypothesis – objectives – data collection – Analysis – report generation

**Question Number : 160 Question Id : 62321710116 Question Type : MCQ Option Shuffling : Yes Display Question Number : Yes Single Line Question Option : No Option Orientation : Vertical**

**Wrong Marks : 0**

Identify the levels of measurement in the decreasing order in terms of information content.

**Options :**

1. Nominal – ordinal – interval – ratio
2. Ratio – interval – ordinal – nominal
3. Ordinal – nominal – ratio – interval
4. Interval – ratio – ordinal – nominal.

**Question Number : 161 Question Id : 62321710117 Question Type : MCQ Option Shuffling : Yes Display Question Number : Yes Single Line Question Option : No Option Orientation : Vertical**

**Wrong Marks : 0**

Match the following

- |                      |  |
|----------------------|--|
| 1) Simple random     | i) selecting every nth individual from the population                        |
| 2) Systematic random | ii) randomly selecting individual from the population                        |
| 3) Cluster           | iii) Randomly selecting subgroups in population with similar characteristics |
| 4) Stratified random | iv) randomly selecting group of units  |

**Options :**

1. 1-iii      2-ii      3-iv      4-i
2. 1-iv      2-i      3-ii      4-iii
3. 1-ii      2-i      3-iv      4-iii
4. 1-ii      2-iii      3-i      4-iv

**Question Number : 162 Question Id : 62321710118 Question Type : MCQ Option Shuffling : Yes Display Question Number : Yes Single Line Question Option : No Option Orientation : Vertical**

**Wrong Marks : 0**



Match the following.

- |                         |  |
|-------------------------|--|
| 1) Exploratory research | i) observing and describing the phenomena without influencing it |
| 2) Descriptive research | ii) Explaining the aspects of the study in detailed manner       |
| 3) Correlation research | iii) to study the problems that has not been studied clearly     |
| 4) Explanatory research | iv) to study the relationship between the variables.             |

Options :

- |    |       |       |       |      |
|----|-------|-------|-------|------|
| 1. | 1-ii  | 2-iii | 3-iv  | 4-i  |
| 2. | 1-iv  | 2-i   | 3-iii | 4-ii |
| 3. | 1-iii | 2-ii  | 3-iv  | 4-i  |
| 4. | 1-iii | 2-ii  | 3-i   | 4-iv |

Question Number : 163 Question Id : 62321710119 Question Type : MCQ Option Shuffling : Yes Display Question Number : Yes  
Single Line Question Option : No Option Orientation : Vertical

Wrong Marks : 0

The statistical method used to determine the quality of test by looking into each items is \_\_\_\_\_

Options :

1. Item writing
2. item analysis
3. factor analysis
4. big data analysis

Question Number : 164 Question Id : 62321710120 Question Type : MCQ Option Shuffling : Yes Display Question Number : Yes  
Single Line Question Option : No Option Orientation : Vertical

Wrong Marks : 0

The reliability that measures the stability of test over time is \_\_\_\_\_

Options :

1. Test re-test
2. inter-rater

3. split-half

4. internal

Question Number : 165 Question Id : 62321710121 Question Type : MCQ Option Shuffling : Yes Display Question Number : Yes  
Single Line Question Option : No Option Orientation : Vertical

Wrong Marks : 0

The extent to which the people's scores are correlated with other variables that reflect the same construct is \_\_\_\_\_

Options :

1. Criterion

2. face

3. Content

4. Concurrent

Question Number : 166 Question Id : 62321710122 Question Type : MCQ Option Shuffling : Yes Display Question Number : Yes  
Single Line Question Option : No Option Orientation : Vertical

Wrong Marks : 0

Which of the following are intelligence test.

i) WAIS    ii) TAT    iii) Colour progressive matrices    iv) BDI

Options :

1. i and ii

2. iv only

3. i and iv

4. i and iii

Question Number : 167 Question Id : 62321710123 Question Type : MCQ Option Shuffling : Yes Display Question Number : Yes  
Single Line Question Option : No Option Orientation : Vertical

Wrong Marks : 0

Which of the following are not the primary factors in 16PF questionnaire.

i) Warmth    ii) liveliness    iii) neuroticism    iv) impulsivity

Options :

1. i and iii
2. ii only
3. iii and iv
4. iii only

Question Number : 168 Question Id : 62321710124 Question Type : MCQ Option Shuffling : Yes Display Question Number : Yes  
Single Line Question Option : No Option Orientation : Vertical

Wrong Marks : 0

Identify the correct sequence of steps in item building.

Options :

1. Test objective – table of specification – write test items – modify test items – pre test – allocation of marks – finalizing.
2. Test objective – table of specification – write test items –pre test – modify test items – allocation of marks – finalizing.
3. Test objective –write test items – table of specification – modify test items – pre test – allocation of marks – finalizing.
4. Test objective – table of specification –pre test – write test items – modify test items – allocation of marks – finalizing.

Question Number : 169 Question Id : 62321710125 Question Type : MCQ Option Shuffling : Yes Display Question Number : Yes  
Single Line Question Option : No Option Orientation : Vertical

Wrong Marks : 0

Identify the correct sequence of steps in standardizing the test.

Options :

1. Writing test items – testing the items – planning the test – preparing the final form – driving norms – establishing final validity and reliability – scoring – interpreting and using results.
2. Writing test items –preparing the final form – driving norms – testing the items – planning the test –establishing final validity and reliability – scoring – interpreting and using results.



3. Writing test items – establishing final validity and reliability – scoring – testing the items – planning the test – preparing the final form – driving norms – interpreting and using results.
4. planning the test – Writing test items – testing the items – preparing the final form – driving norms – establishing final validity and reliability – scoring – interpreting and using results.

Question Number : 170 Question Id : 62321710126 Question Type : MCQ Option Shuffling : Yes Display Question Number : Yes Single Line Question Option : No Option Orientation : Vertical

Wrong Marks : 0

Match the following.

- |                        |   |
|------------------------|---|
| 1) Face validity       | i) test predict later performance                   |
| 2) Construct validity  | ii) test measures what it appears to measure        |
| 3) Concurrent validity | iii) test relate to underlying theoretical concepts |
| 4) Predictive validity | iv) test relate to existing similar measure         |

Options :

- |    |       |       |      |       |
|----|-------|-------|------|-------|
| 1. | 1-ii  | 2-iii | 3-iv | 4-i   |
| 2. | 1-iii | 2-ii  | 3-i  | 4-iv  |
| 3. | 1-iv  | 2-i   | 3-ii | 4-iii |
| 4. | 1-iii | 2-i   | 3-ii | 4-iv  |

Question Number : 171 Question Id : 62321710127 Question Type : MCQ Option Shuffling : Yes Display Question Number : Yes Single Line Question Option : No Option Orientation : Vertical

Wrong Marks : 0

Match the following.

- |                            |                  |
|----------------------------|------------------|
| 1) Projective test         | i) Aptitude      |
| 2) Performance test        | ii) Personality  |
| 3) CAT                     | iii) Attitude    |
| 4) Gutman cumulative scale | iv) intelligence |

Options :

- |    |       |      |      |       |
|----|-------|------|------|-------|
| 1. | 1-iii | 2-iv | 3-ii | 4-i   |
| 2. | 1-iv  | 2-i  | 3-ii | 4-iii |



3. 1-ii      2-iv      3-i      4-iii

4. 1-ii      2-iii      3-i      4-iv

Question Number : 172 Question Id : 62321710128 Question Type : MCQ Option Shuffling : Yes Display Question Number : Yes  
Single Line Question Option : No Option Orientation : Vertical

Wrong Marks : 0

Branch of psychology interested in discovering biological bases of our thoughts, feelings and behaviour is \_\_\_\_\_

Options :

1. Neuropsychology

2. Biopsychology

3. Cognitive science

4. Cognitive psychology

Question Number : 173 Question Id : 62321710129 Question Type : MCQ Option Shuffling : Yes Display Question Number : Yes  
Single Line Question Option : No Option Orientation : Vertical

Wrong Marks : 0

The part of neuron that conduct action potential towards to cell body is \_\_\_\_\_

Options :

1. Dentrines

2. Axon

3. terminal buttons

4. Myelin sheath

Question Number : 174 Question Id : 62321710130 Question Type : MCQ Option Shuffling : Yes Display Question Number : Yes  
Single Line Question Option : No Option Orientation : Vertical

Wrong Marks : 0

Which of the following are excitatory neurotransmitters?

i) Serotonin    ii) Dopamine    iii) Glutamate    iv) GABA

Options :

1. i and ii
2. iii and iv
3. ii and iii
4. i and iii

Question Number : 175 Question Id : 62321710131 Question Type : MCQ Option Shuffling : Yes Display Question Number : Yes  
Single Line Question Option : No Option Orientation : Vertical

Wrong Marks : 0

Progressive and fatal disease caused by neural degeneration is/are

i) Parkinson's ii) huntington's iii) Down's syndrome iv) Dementia

Options :

1. i only
2. i and ii
3. iii and iv
4. i, ii and iv

Question Number : 176 Question Id : 62321710132 Question Type : MCQ Option Shuffling : Yes Display Question Number : Yes  
Single Line Question Option : No Option Orientation : Vertical

Wrong Marks : 0

The chemical substance that facilitate the action of neurotransmitter at a receptor site is.

i) Stimulant ii) Inhibitory iii) Agonist iv) Antagonist

Options :

1. iii only
2. i and iii
3. i and iv
4. iii and iv

Question Number : 177 Question Id : 62321710133 Question Type : MCQ Option Shuffling : Yes Display Question Number : Yes  
Single Line Question Option : No Option Orientation : Vertical

Wrong Marks : 0

Identify the correct neural pathway for stimulus detection

Options :

1. Stimulus – receptors – dendrites – axon – cell body – terminal button
2. Stimulus – receptors – axon – cell body – dendrites – terminal button
3. Stimulus – receptors – cell body – dendrites – axon – terminal button
4. Stimulus – receptors – dendrites – cell body – axon – terminal button

Question Number : 178 Question Id : 62321710134 Question Type : MCQ Option Shuffling : Yes Display Question Number : Yes  
Single Line Question Option : No Option Orientation : Vertical

Wrong Marks : 0

Identify the correct visual pathway.

Options :

1. Eye - optic chiasma – optic tract - optic nerve – brain - primary visual cortex
2. Eye – optic nerve – optic chiasma – optic tract – brain - primary visual cortex
3. Eye - optic chiasma – optic tract – brain - optic nerve – primary visual cortex
4. Eye - optic chiasma - optic nerve – optic tract - brain - primary visual cortex

Question Number : 179 Question Id : 62321710135 Question Type : MCQ Option Shuffling : Yes Display Question Number : Yes  
Single Line Question Option : No Option Orientation : Vertical

Wrong Marks : 0

Match the following

- |                  |   |
|------------------|---|
| 1) Acetylcholine | i) Movement, attention and learning                         |
| 2) Dopamine      | ii) Muscle action, learning and memory                      |
| 3) Serotonin     | iii) Abnormal levels leads to sleep and eating disorders    |
| 4) GABA          | iv) Regulation of mood, sleep, eating, arousal and dreaming |

Options :

1. 1-iii    2-iv    3-ii    4-i
2. 1-iv    2-iii    3-i    4-ii
3. 1-ii    2-i    3-iv    4-iii

4. 1-i      2-ii      3-iii      4-iv

Question Number : 180 Question Id : 62321710136 Question Type : MCQ Option Shuffling : Yes Display Question Number : Yes  
Single Line Question Option : No Option Orientation : Vertical

Wrong Marks : 0

Match the following

- |                                   |  |
|-----------------------------------|--|
| 1) Somatic nervous system         | i) readies the body for restoration of energy  |
| 2) Autonomic nervous system       | ii) readies the body for expenditure of energy |
| 3) Sympathetic nervous system     | iii) Connects involuntary muscles to CNS       |
| 4) Parasympathetic nervous system | iv) Connects voluntary muscles to CNS          |

Options :

- |    |       |       |      |      |
|----|-------|-------|------|------|
| 1. | 1-iii | 2-iv  | 3-ii | 4-i  |
| 2. | 1-iv  | 2-iii | 3-ii | 4-i  |
| 3. | 1-iii | 2-iv  | 3-i  | 4-ii |
| 4. | 1-iv  | 2-iii | 3-i  | 4-ii |