

Andhra Pradesh State Council of Higher Education

Question Paper Name: ARCHITECTURE AND PLANNING
Subject Name: ARCHITECTURE AND PLANNING
Creation Date: 2019-11-10 15:11:46
Duration: 180
Total Marks: 180
Display Marks: Yes
Share Answer Key With Delivery Engine: Yes

ARCHITECTURE AND PLANNING

Group Number : 1
Group Id : 62321750
Group Maximum Duration : 0
Group Minimum Duration : 180
Revisit allowed for view? : No
Revisit allowed for edit? : No
Break time: 0
Group Marks: 180
Revisit allowed for group Instructions? : Yes
Maximum Instruction Time: 0
Minimum Instruction Time: 0

Teaching and Research Aptitude

Section Id : 62321799
Section Number : 1
Section type : Online
Mandatory or Optional: Mandatory
Number of Questions: 82
Number of Questions to be attempted: 82
Section Marks: 90
Display Number Panel: Yes
Group All Questions: No

Sub-Section Number: 1
Sub-Section Id: 623217295
Question Shuffling Allowed : Yes

Question Number : 1 Question Id : 6232178870 Question Type : MCQ Option Shuffling : Yes Display Question Number : Yes
Single Line Question Option : No Option Orientation : Vertical

Wrong Marks : 0

The Teacher has been glorified by the phrase “Friend, Philosopher and guide” because

Options :

1. He is a great reformer of the society
2. He has to play all vital roles in the context of society.
3. He transmits the high value of humanity to students.
4. He is a great patriot

Question Number : 2 Question Id : 6232178871 Question Type : MCQ Option Shuffling : Yes Display Question Number : Yes
Single Line Question Option : No Option Orientation : Vertical

Wrong Marks : 0

What are the characteristics of continuous and comprehensive evaluation?

- a. It increases the workload on students by taking multiple tests.
- b. It replaces marks with grades.
- c. It evaluates every aspect of the student
- d. It helps in reducing examination phobia

Options :

1. (a), (b), (c) and (d)
2. (b) and (c)
3. (a), (b) and (c)
4. (b), (c) and (d)

Question Number : 3 Question Id : 6232178872 Question Type : MCQ Option Shuffling : Yes Display Question Number : Yes
Single Line Question Option : No Option Orientation : Vertical

Wrong Marks : 0

Before teaching a teacher should

Options :

1. Know the existing knowledge of his students and their background knowledge
2. be aware of the environmental variables acting on the mind of the pupils
3. be competent enough to arouse the curiosity of his pupils
4. All of the other options

Question Number : 4 Question Id : 6232178873 Question Type : MCQ Option Shuffling : Yes Display Question Number : Yes
Single Line Question Option : No Option Orientation : Vertical
Wrong Marks : 0

The major responsibility with which the school personnel have been entrusted is that

- Options :
1. It harmonizes the needs of the child and demands of the society for the mutual benefit
 2. It makes the child employable
 3. It prepares the school programme according to the need of the child.
 4. All of the other options

Question Number : 5 Question Id : 6232178874 Question Type : MCQ Option Shuffling : Yes Display Question Number : Yes
Single Line Question Option : No Option Orientation : Vertical
Wrong Marks : 0

Moral values can be effectively inculcated among the students when the teacher.

- Options :
1. Frequently talks about the values.
 2. Himself practices them
 3. Tells stories of great persons

Talks of gods and goddesses

4.

Question Number : 6 Question Id : 6232178875 Question Type : MCQ Option Shuffling : Yes Display Question Number : Yes
Single Line Question Option : No Option Orientation : Vertical

Wrong Marks : 0

Which of the following is not an example of learner centred method.

Options :

1. Closed ended method

1.

2. Discussion method

2.

3. Discovery based

3.

4. survey method

4.

Question Number : 7 Question Id : 6232178876 Question Type : MCQ Option Shuffling : Yes Display Question Number : Yes
Single Line Question Option : No Option Orientation : Vertical

Wrong Marks : 0

The highest level of cognitive domain as per revised blooms taxonomy

Options :

1. Applying

1.

2. Analysing

2.

3. Creating

3.

4. Evaluating

4.

Question Number : 8 Question Id : 6232178877 Question Type : MCQ Option Shuffling : Yes Display Question Number : Yes
Single Line Question Option : No Option Orientation : Vertical

Wrong Marks : 0

As per the UGC recommendations which of the following grade point is correct for B+ grade?

Options :

1. 9

2. 7

3. 8

4. 6

Question Number : 9 Question Id : 6232178878 Question Type : MCQ Option Shuffling : Yes Display Question Number : Yes
Single Line Question Option : No Option Orientation : Vertical

Wrong Marks : 0

The teacher's role at the higher educational level is to:

Options :

1. Provide information to students

2. Encourage healthy competition among students.

3. Help students to solve their personal problems.

4. Promote self – learning in students.

Question Number : 10 Question Id : 6232178879 Question Type : MCQ Option Shuffling : Yes Display Question Number : Yes
Single Line Question Option : No Option Orientation : Vertical

Wrong Marks : 0

In the process of conducting research “Formulation of Hypothesis” is followed by

Options :

1. Statement of objectives

2. Selection of research tools

3. Need for the study

4. Problem statement

Question Number : 11 Question Id : 6232178880 Question Type : MCQ Option Shuffling : Yes Display Question Number : Yes
Single Line Question Option : No Option Orientation : Vertical

Wrong Marks : 0

Which of the following variable cannot be expressed in quantitative terms?

Options :

1. Marital status

2. Income

3. Age

4. Experience

Question Number : 12 Question Id : 6232178881 Question Type : MCQ Option Shuffling : Yes Display Question Number : Yes
Single Line Question Option : No Option Orientation : Vertical

Wrong Marks : 0

The form that is filled by investigation to collect information from the respondent is called as

Options :

1. Schedule

2. Report

3. Response sheet

Field report

4.

Question Number : 13 Question Id : 6232178882 Question Type : MCQ Option Shuffling : Yes Display Question Number : Yes
Single Line Question Option : No Option Orientation : Vertical

Wrong Marks : 0

Studying an element and inferences made for the whole universe is called

Options :

1. Inductive logic

1.

2. Deductive logic

2.

3. Predictive logic

3.

4. No logic

4.

Question Number : 14 Question Id : 6232178883 Question Type : MCQ Option Shuffling : Yes Display Question Number : Yes
Single Line Question Option : No Option Orientation : Vertical

Wrong Marks : 0

The following is not a probabilistic sampling scheme.

Options :

1. Stratified random sample

1.

2. Cluster sample

2.

3. Systematic sample

3.

4. Judgement sample

4.

Question Number : 15 Question Id : 6232178884 Question Type : MCQ Option Shuffling : Yes Display Question Number : Yes
Single Line Question Option : No Option Orientation : Vertical

Wrong Marks : 0

The population census carried out by the Government of India is an example of

Options :

1. Exploratory Research

1.

2. Action Research

2.

3. Descriptive Research

3.

4. Analytical Research

4.

Question Number : 16 Question Id : 6232178885 Question Type : MCQ Option Shuffling : Yes Display Question Number : Yes
Single Line Question Option : No Option Orientation : Vertical

Wrong Marks : 0

The following is not a part of Research ethics.

Options :

1. Respect for self interest

1.

2. Respect for Intellectual property

2.

3. Respect for confidentiality

3.

4. Respect to fact presentation

4.

Question Number : 17 Question Id : 6232178886 Question Type : MCQ Option Shuffling : Yes Display Question Number : Yes
Single Line Question Option : No Option Orientation : Vertical

Wrong Marks : 0

Giving credit to individuals for their creative and intellectual works that has been utilised
in the research study is called

Options :

1. Bibliography

2. Reference

3. Citation

4. End note

Question Number : 18 Question Id : 6232178887 Question Type : MCQ Option Shuffling : Yes Display Question Number : Yes
Single Line Question Option : No Option Orientation : Vertical

Wrong Marks : 0

Accepting null hypothesis when it is false is called

Options :

1. Type-I error

2. Type-II error

3. Sampling error

4. Parallax error

Sub-Section Number:	2
Sub-Section Id:	623217296
Question Shuffling Allowed :	Yes

Question Id : 6232178888 Question Type : COMPREHENSION Sub Question Shuffling Allowed : Yes Group Comprehension Questions : No

Question Numbers : (19 to 27)

Question Label : Comprehension

Read the following passage and answer the question

We look down upon the insects as almost the lowest of living things, and yet these tiny things have learnt the art of co-operation and of sacrifice for the common good far better than man. Ever since I read of the White Ant and of its sacrifice for its comrades, I have developed a soft corner in my heart for it. If mutual co-operation and sacrifice for the good of society are the tests of civilization, we may say that the White Ant and the Ant are in this respect superior to man.

In one of our old Sanskrit books there is a verse which can be translated as follows: “for the family sacrifice the individual, for the community the family, for the country the community and for the soul the whole world”. What the soul is few of us can know or tell and each one of us can interpret it in a different way. But the lesson this Sanskrit verse teaches us is the same lesson of co-operation and sacrifice for the larger good. We in India had forgotten this sovereign path to real greatness for many a day, and so we had fallen. But again we seem to have glimpses of it, and all the country is astir. How wonderful it is to see men and women, and boys and girls, smilingly going ahead in India’s cause and not caring about any pain or suffering! Well may they smile and be glad, for the joy of serving in a great cause is theirs; and to those who are fortunate comes the joy of sacrifice also. Today we are trying to free India. This is a great thing. But even greater is the cause of humanity itself. And because we feel that our struggle is a part of the great human struggle to end suffering and misery, we can rejoice that we are doing our little bit to help the progress of the world.

Sub questions

Question Number : 19 Question Id : 6232178889 Question Type : MCQ Option Shuffling : Yes Display Question Number : Yes
Single Line Question Option : No Option Orientation : Vertical

Wrong Marks : 0

In which respect are the insects better than man?

Options :

1. More in number

1.

2. Sacrifice for the common good

2.

3. Less complex biological constitution

4. Smaller in size

Question Number : 20 Question Id : 6232178890 Question Type : MCQ Option Shuffling : Yes Display Question Number : Yes
Single Line Question Option : No Option Orientation : Vertical
Wrong Marks : 0

What are the tests of civilization?

Options :

1. Living together and sharing food

2. Devoid of wars

3. Social etiquette

4. Mutual co-operation and sacrifice

Question Number : 21 Question Id : 6232178891 Question Type : MCQ Option Shuffling : Yes Display Question Number : Yes
Single Line Question Option : No Option Orientation : Vertical
Wrong Marks : 0

According to the Sanskrit verse, what should be sacrificed for the sake of the country?

Options :

1. The world

2. The community

3. The family

4. The individual

Question Number : 22 Question Id : 6232178892 Question Type : MCQ Option Shuffling : Yes Display Question Number : Yes
Single Line Question Option : No Option Orientation : Vertical

Wrong Marks : 0

Which concept of human existence can be interpreted in different ways?

Options :

1. The soul

2. The mind

3. The god

4. The life

Question Number : 23 Question Id : 6232178893 Question Type : MCQ Option Shuffling : Yes Display Question Number : Yes
Single Line Question Option : No Option Orientation : Vertical

Wrong Marks : 0

Why had the people of India fallen?

Options :

1. Imitation of western culture

2. Hundreds of years slavery

3. Forgotten the sovereign path

4. Lack of confidence in their culture

Question Number : 24 Question Id : 6232178894 Question Type : MCQ Option Shuffling : Yes Display Question Number : Yes
Single Line Question Option : No Option Orientation : Vertical

Wrong Marks : 0

How did the people of the country stand for India's cause?

Options :

1. Following the National leaders
2. Studying law abroad
3. Being religious
4. Taking pain and suffering in their stride

Question Number : 25 Question Id : 6232178895 Question Type : MCQ Option Shuffling : Yes Display Question Number : Yes
Single Line Question Option : No Option Orientation : Vertical
Wrong Marks : 0

Who were considered fortunate by the author?

Options :

1. The British
2. Freedom fighters
3. Non-Resident Indians
4. The rich of India

Question Number : 26 Question Id : 6232178896 Question Type : MCQ Option Shuffling : Yes Display Question Number : Yes
Single Line Question Option : No Option Orientation : Vertical
Wrong Marks : 0

What is greater than freeing India from the foreign rule?

Options :

1. Working for the cause of humanity
2. Preserving wild life

Balancing ecology

3.

Protecting the water bodies

4.

Question Number : 27 Question Id : 6232178897 Question Type : MCQ Option Shuffling : Yes Display Question Number : Yes
Single Line Question Option : No Option Orientation : Vertical

Wrong Marks : 0

What does taking up the cause of humanity lead to?

Options :

End of suffering and misery

1.

End of greed and desire

2.

Progress of the world

3.

End of poverty

4.

Sub-Section Number: 3
Sub-Section Id: 623217297
Question Shuffling Allowed : Yes

Question Number : 28 Question Id : 6232178898 Question Type : MCQ Option Shuffling : Yes Display Question Number : Yes
Single Line Question Option : No Option Orientation : Vertical

Wrong Marks : 0

An author communicating with a reader through a book is an example of _____.

Options :

No communication

1.

Interpersonal communication

2.

Group communication

3.

Mass communication

4.

Question Number : 29 Question Id : 6232178899 Question Type : MCQ Option Shuffling : Yes Display Question Number : Yes
Single Line Question Option : No Option Orientation : Vertical

Wrong Marks : 0

Differentiation between acceptance and non-acceptance of certain stimuli in classroom communication is the basis of

Options :

1. Selective attention

1.

2. Selective morality

2.

3. Selective expectation of performance

3.

4. Selective application to peer group.

4.

Question Number : 30 Question Id : 6232178900 Question Type : MCQ Option Shuffling : Yes Display Question Number : Yes
Single Line Question Option : No Option Orientation : Vertical

Wrong Marks : 0

Which of the following is NOT one of the primary functions of mass communication.

Options :

1. Correlation

1.

2. Cultural transmission

2.

3. Entertainment

3.

4. Immunization

4.

Question Number : 31 Question Id : 6232178901 Question Type : MCQ Option Shuffling : Yes Display Question Number : Yes
Single Line Question Option : No Option Orientation : Vertical

Wrong Marks : 0

The influence of a group on the attitude of an individual is generally treated in terms of the concept of

Options :

1. Psychological group
2. Physical group
3. Corporative group
4. Reference group

Question Number : 32 Question Id : 6232178902 Question Type : MCQ Option Shuffling : Yes Display Question Number : Yes
Single Line Question Option : No Option Orientation : Vertical

Wrong Marks : 0

Which of the following theories stress that mass media in a society is controlled by the state power?

Options :

1. Normative
2. Authoritarian
3. Libertarian
4. Social responsibility

Question Number : 33 Question Id : 6232178903 Question Type : MCQ Option Shuffling : Yes Display Question Number : Yes
Single Line Question Option : No Option Orientation : Vertical

Wrong Marks : 0

Positive classroom communication leads to

Options :

1. coercion

2. submission

3. confrontation

4. persuasion

Question Number : 34 Question Id : 6232178904 Question Type : MCQ Option Shuffling : Yes Display Question Number : Yes
Single Line Question Option : No Option Orientation : Vertical

Wrong Marks : 0

Deductive communication is

Options :

1. Individual

2. Inter – personal

3. Organizational

4. Relational

Question Number : 35 Question Id : 6232178905 Question Type : MCQ Option Shuffling : Yes Display Question Number : Yes
Single Line Question Option : No Option Orientation : Vertical

Wrong Marks : 0

Which is the essential component of communication?

Options :

1. Understanding

2. Medium

3. Thoughts

Intention

4.

Question Number : 36 Question Id : 6232178906 Question Type : MCQ Option Shuffling : Yes Display Question Number : Yes
Single Line Question Option : No Option Orientation : Vertical

Wrong Marks : 0

Match the following

- | | | |
|-------------------|---|------------------------------|
| A) Pictures | – | 1) High order skills |
| B) high skills | – | 2) Visual communication |
| C) Hums | – | 3) Speech art |
| D) Long Distances | – | 4) Public telephone networks |

Options :

1. A-2 B-3 C-1 D-4

2. A-3 B-2 C-1 D-4

3. A-4 B-2 C-1 D-3

4. A-2 B-1 C-3 D-4

Question Number : 37 Question Id : 6232178907 Question Type : MCQ Option Shuffling : Yes Display Question Number : Yes
Single Line Question Option : No Option Orientation : Vertical

Wrong Marks : 0

The missing number in the sequence of numbers is

4, 5, 9, 18, 34, _____, 95

Options :

1. 43

2. 59

3. 67

4. 54

Question Number : 38 Question Id : 6232178908 Question Type : MCQ Option Shuffling : Yes Display Question Number : Yes
Single Line Question Option : No Option Orientation : Vertical

Wrong Marks : 0

The missing term in the following sequence is

ABC, BDF, _____, DHL

Options :

1. DJO

2. CFI

3. DKL

4. DKN

Question Number : 39 Question Id : 6232178909 Question Type : MCQ Option Shuffling : Yes Display Question Number : Yes
Single Line Question Option : No Option Orientation : Vertical

Wrong Marks : 0

If the numerator of a fraction is increased by 140% and the denominator is increased by

200%, the resultant fraction is $\frac{1}{2}$, then the original fraction is

Options :

1. $\frac{5}{19}$

2. $\frac{5}{9}$

3. $\frac{5}{8}$

4. $\frac{3}{4}$

Question Number : 40 Question Id : 6232178910 Question Type : MCQ Option Shuffling : Yes Display Question Number : Yes
Single Line Question Option : No Option Orientation : Vertical

Wrong Marks : 0

A person lost 20% by selling an article for 700 rupees. What percent shall he gain by selling it for 1200 rupees?

Options :

1. 25

2. 37

3. $37\frac{1}{7}$

4. 40

Question Number : 41 Question Id : 6232178911 Question Type : MCQ Option Shuffling : Yes Display Question Number : Yes
Single Line Question Option : No Option Orientation : Vertical

Wrong Marks : 0

A business man allows a discount of 10% on the marked price of an article. Then how much percentage, above the cost price, the article be marked to make a profit of 35%?

Options :

1. 40

2. 48

3. 55

Question Number : 42 Question Id : 6232178912 Question Type : MCQ Option Shuffling : Yes Display Question Number : Yes
Single Line Question Option : No Option Orientation : Vertical

Wrong Marks : 0

A man travels from the city A to the city B by a car with an average speed of 96 kmph and returns from B to A by the same car with an average speed of 32 kmph. Then the average speed of the car for the entire journey is _____ kmph.

Options :

1. 16

2. 48

3. 64

4. 84

Question Number : 43 Question Id : 6232178913 Question Type : MCQ Option Shuffling : Yes Display Question Number : Yes
Single Line Question Option : No Option Orientation : Vertical

Wrong Marks : 0

In a certain language TABLE is code as UACME, then the code word for CHAIR is

Options :

1. DLATS

2. BIAIQ

3. DHAIS

4. DIBJS

Question Number : 44 Question Id : 6232178914 Question Type : MCQ Option Shuffling : Yes Display Question Number : Yes
Single Line Question Option : No Option Orientation : Vertical

Wrong Marks : 0

If $x:y:z = 2:3:5$, then $\frac{x}{y} : \frac{y}{z} : \frac{z}{x} =$

Options :

1. 20:18:75
2. 6:15:13
3. 10:13:15
4. 6:15:10

Question Number : 45 Question Id : 6232178915 Question Type : MCQ Option Shuffling : Yes Display Question Number : Yes
Single Line Question Option : No Option Orientation : Vertical

Wrong Marks : 0

If an amount X invested with a compound interest rate of 10% per annum become Rs 1,665/- in 3 years. Then the invested amount X is

Options :

1. 3,500
2. 5,555
3. 5,000
4. 6,500

Sub-Section Number: 4
Sub-Section Id: 623217298
Question Shuffling Allowed : No

Question Number : 46 Question Id : 6232178916 Question Type : MCQ Option Shuffling : Yes Display Question Number : Yes
Single Line Question Option : No Option Orientation : Vertical

Wrong Marks : 0

Raju is two seats to Ramu's left. Ranga is three seats to Raju's right. Rao is two seats to Raju's left. Krishna is six seats to Sita's right. Sarma is six seats to Krishna's right. Rao is not sitting next to Raju. Who sits one seat to Sarma's left?

Options :

1. Rao
2. Krishna
3. Raju
4. Sita

Question Number : 47 Question Id : 6232178917 Question Type : MCQ Option Shuffling : Yes Display Question Number : Yes
Single Line Question Option : No Option Orientation : Vertical

Wrong Marks : 0

Two statements are given with two conclusions I and II. Which logical conclusion can be drawn out as per the statements?

Statements: All windows are needles

Some trees are windows

Conclusion: I. Some trees are needles

II. Some trees are not needles

Options :

1. Only conclusion I follows
2. Only conclusion II follows
3. Both conclusions I and II followed
4. Both conclusions I and II are not followed

Question Number : 48 Question Id : 6232178918 Question Type : MCQ Option Shuffling : Yes Display Question Number : Yes
Single Line Question Option : No Option Orientation : Vertical

Wrong Marks : 0

The following series follows a pattern. Identify the pattern and fill the blank.

6, 14, 36, 98, _____.

Options :

1. 276

2. 275

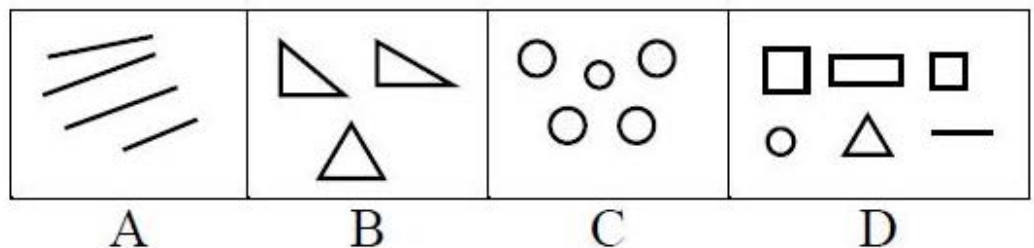
3. 220

4. 274

Question Number : 49 Question Id : 6232178919 Question Type : MCQ Option Shuffling : Yes Display Question Number : Yes
Single Line Question Option : No Option Orientation : Vertical

Wrong Marks : 0

Choose the figure which is different from other.



Options :

1. C

2. B

3. D

4. A

Question Number : 50 Question Id : 6232178920 Question Type : MCQ Option Shuffling : Yes Display Question Number : Yes
Single Line Question Option : No Option Orientation : Vertical

Wrong Marks : 0

A is B's sister. C is B's mother. E is D's mother. Then how A is related to D?

Options :

1. Sister
2. Grand Mother
3. Daughter
4. Grand Daughter

Question Number : 51 Question Id : 6232178921 Question Type : MCQ Option Shuffling : Yes Display Question Number : Yes
Single Line Question Option : No Option Orientation : Vertical

Wrong Marks : 0

Arrange the given words in a meaningful sequence and choose an alternative.

- i) Site
- ii) Plan
- iii) Rent
- iv) Money
- v) Building
- vi) Construction

Options :

1. i, ii, iii, vi, v, iv
2. ii, iii, vi, v, i, iv
3. iii, iv, ii, vi, v, i
4. iv, i, ii, vi, v, iii

Question Number : 52 Question Id : 6232178922 Question Type : MCQ Option Shuffling : Yes Display Question Number : Yes
Single Line Question Option : No Option Orientation : Vertical

Wrong Marks : 0

Consider the statements “The hill is fiery. Because the hill is smoky. Whatever has fire has smoke”. In this statement, “The hill has smoke which is invariably associated with fire” is

Options :

1. Pratijna
2. Hetu
3. Udaharna
4. Upanaya

Question Number : 53 Question Id : 6232178923 Question Type : MCQ Option Shuffling : Yes Display Question Number : Yes
Single Line Question Option : No Option Orientation : Vertical

Wrong Marks : 0

Anumāna or inference is defined as

Options :

1. Instrument of judgment
2. Instrument of perception
3. Instrument of fact
4. Instrument of cause

Question Number : 54 Question Id : 6232178924 Question Type : MCQ Option Shuffling : Yes Display Question Number : Yes
Single Line Question Option : No Option Orientation : Vertical

Wrong Marks : 0

The science and study of pramanas is called

Options :

1. Nyaya

2. Advaita

3. Mimamsa

4. Vedanta

Question Number : 55 Question Id : 6232178925 Question Type : MCQ Option Shuffling : Yes Display Question Number : Yes
Single Line Question Option : No Option Orientation : Vertical

Wrong Marks : 0

Study the following tabular statement and answer the question below.

The proportion of male students and the proportion of girl students in a school are given in the following tabular statement. The school has a total of 1600 students and 80% of them are in secondary section and the rest are equally divided between the classes 11 and 12.

Class	Male	Girl
11	0.50	0.50
12	0.60	0.40
Secondary section	0.45	0.55

The number of girl students in the class 12 is

Options :

1. 32

2. 160

3. 64

4. 80

Question Number : 56 Question Id : 6232178926 Question Type : MCQ Option Shuffling : Yes Display Question Number : Yes
Single Line Question Option : No Option Orientation : Vertical

Wrong Marks : 0

Study the following tabular statement and answer the question below.

The proportion of male students and the proportion of girl students in a school are given in the following tabular statement. The school has a total of 1600 students and 80% of them are in secondary section and the rest are equally divided between the classes 11 and 12.

Class	Male	Girl
11	0.50	0.50
12	0.60	0.40
Secondary section	0.45	0.55

The total number of male students in the school is

Options :

1. 700

2.

2. 650

3.

3. 848

4.

4. 752

Question Number : 57 Question Id : 6232178927 Question Type : MCQ Option Shuffling : Yes Display Question Number : Yes Single Line Question Option : No Option Orientation : Vertical

Wrong Marks : 0

Study the following tabular statement and answer the question below.

The proportion of male students and the proportion of girl students in a school are given in the following tabular statement. The school has a total of 1600 students and 80% of them are in secondary section and the rest are equally divided between the classes 11 and 12.

Class	Male	Girl
11	0.50	0.50
12	0.60	0.40
Secondary section	0.45	0.55

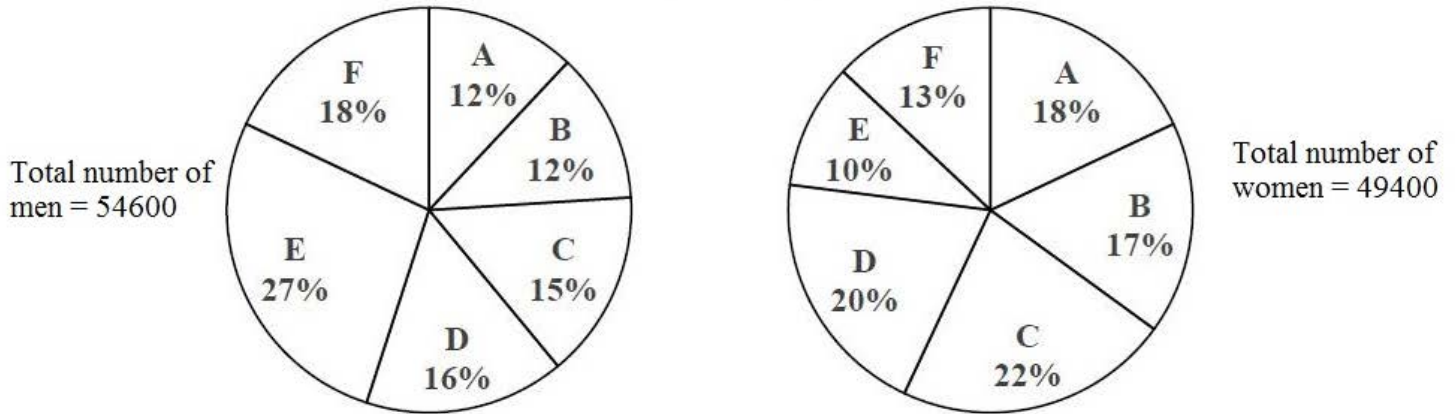
The percentage of male students in the secondary section

Options :

1. 36
2. 42
3. 45
4. 48

Question Number : 58 Question Id : 6232178928 Question Type : MCQ Option Shuffling : Yes Display Question Number : Yes
 Single Line Question Option : No Option Orientation : Vertical
 Wrong Marks : 0

The following pie chart shows the distribution of men and women in 6 different towns. Based on this information answer the question given below.



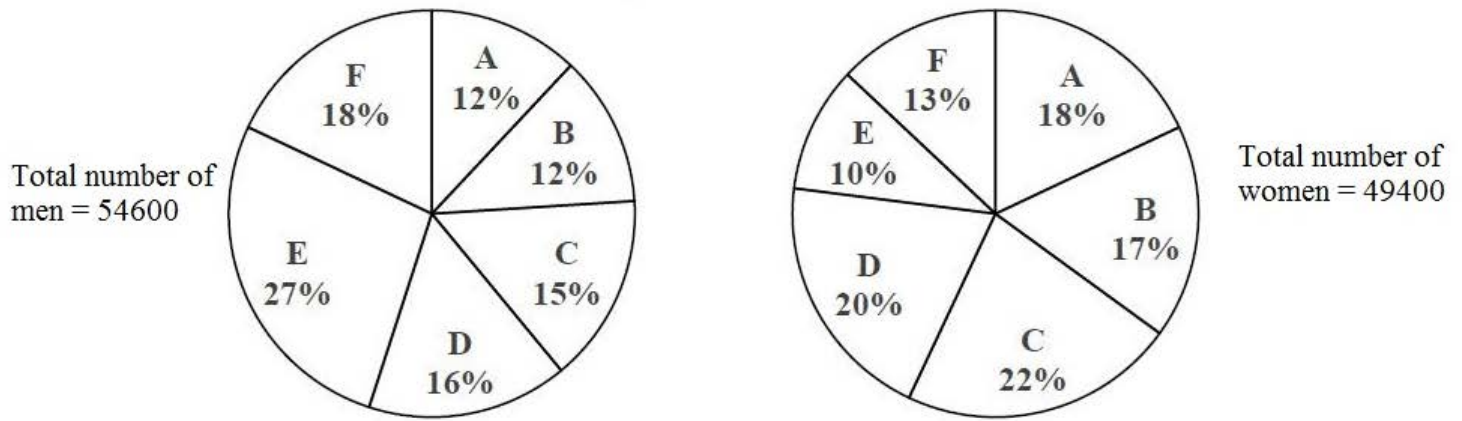
Total number of men and women in the town C is

Options :

1. 19000
2. 19058
3. 20463
4. 21252

Question Number : 59 Question Id : 6232178929 Question Type : MCQ Option Shuffling : Yes Display Question Number : Yes
 Single Line Question Option : No Option Orientation : Vertical
 Wrong Marks : 0

The following pie chart show the distribution of men and women in 6 different towns. Based on this information answer the question given below.



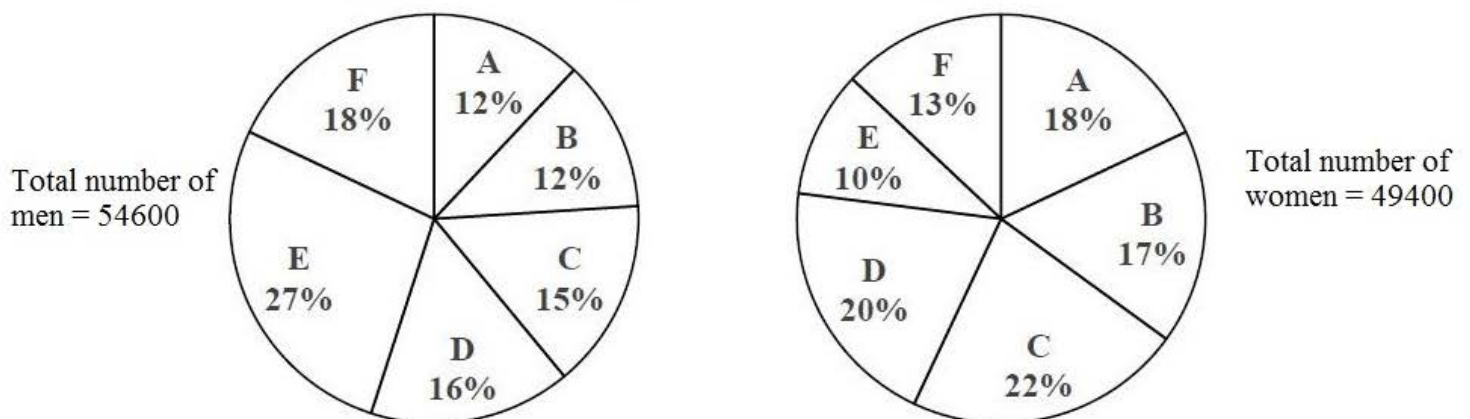
The ratio between the number of men and women in the town D is

Options :

1. 1092:1235
2. 348:177
3. 2:3
4. 12:13

Question Number : 60 Question Id : 6232178930 Question Type : MCQ Option Shuffling : Yes Display Question Number : Yes Single Line Question Option : No Option Orientation : Vertical Wrong Marks : 0

The following pie chart show the distribution of men and women in 6 different towns. Based on this information answer the question given below.



The total number of women in the towns B, D and F is

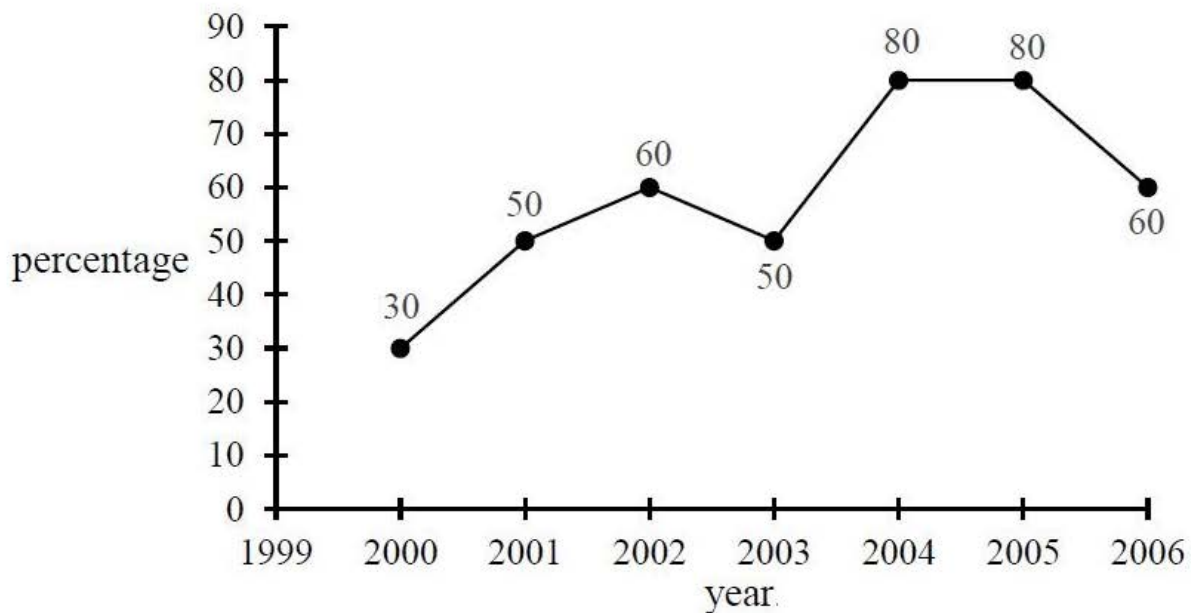
Options :

1. 24000
2. 24363
3. 24700
4. 29560

Question Number : 61 Question Id : 6232178931 Question Type : MCQ Option Shuffling : Yes Display Question Number : Yes
Single Line Question Option : No Option Orientation : Vertical

Wrong Marks : 0

The following line graph represents the percentage of the number of qualified candidates in an examination out of the total number of candidates appeared in that examination for the corresponding year. Based on the information for the years 2000 to 2006, answer the question below.



If the number of qualified candidates in 2004 was 42400, then the number of candidates appeared for the examination in 2004 was

Options :

1. 50000
2. 53250

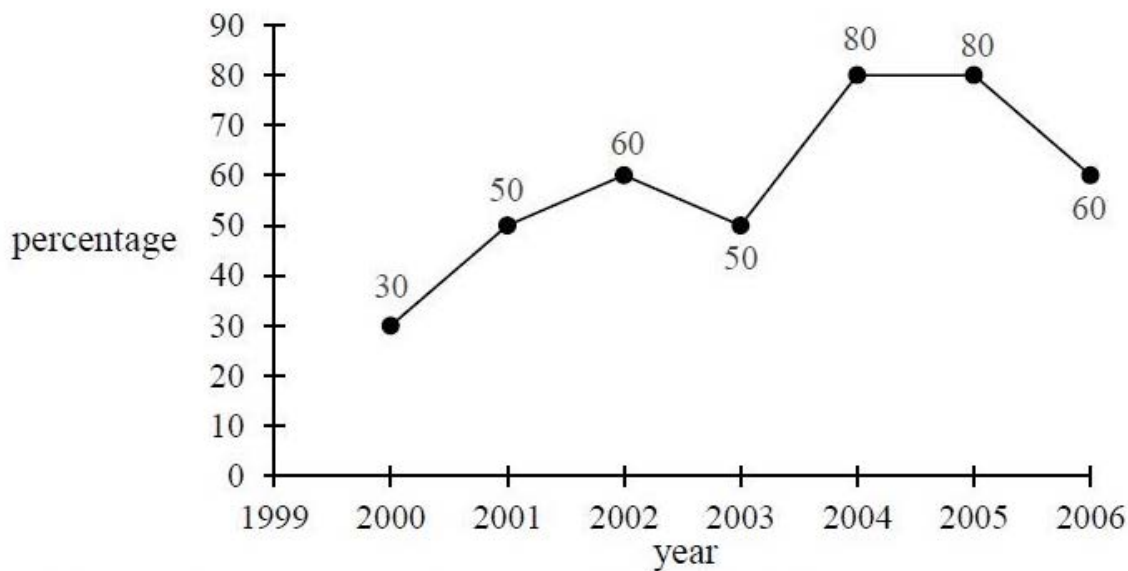
3. 53000

4. 48250

Question Number : 62 Question Id : 6232178932 Question Type : MCQ Option Shuffling : Yes Display Question Number : Yes
Single Line Question Option : No Option Orientation : Vertical

Wrong Marks : 0

The following line graph represents the percentage of the number of qualified candidates in an examination out of the total number of candidates appeared in that examination for the corresponding year. Based on the information for the years 2000 to 2006, answer the question below.



If the total number of qualified candidates in 2005 and 2006 together was 33500 and the number of candidates appeared in 2005 was 26500, then the number of candidates appeared for the examination in 2006 was

Options :

1. 20500

2. 20000

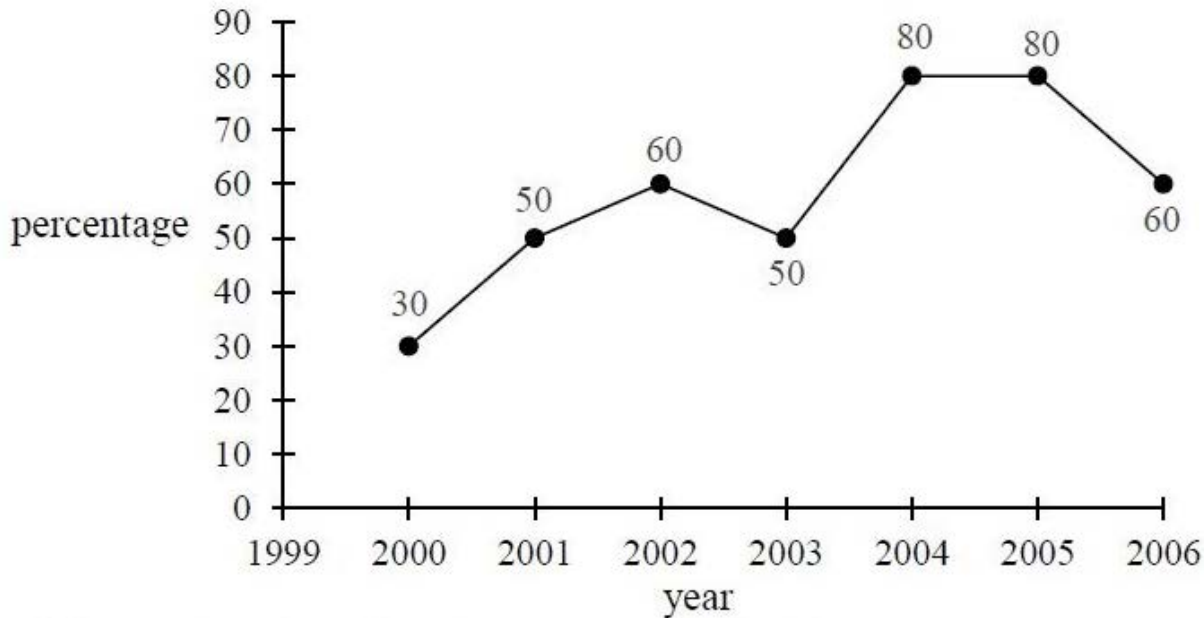
3. 22500

4. 24050

Question Number : 63 Question Id : 6232178933 Question Type : MCQ Option Shuffling : Yes Display Question Number : Yes
Single Line Question Option : No Option Orientation : Vertical

Wrong Marks : 0

The following line graph represents the percentage of the number of qualified candidates in an examination out of the total number of candidates appeared in that examination for the corresponding year. Based on the information for the years 2000 to 2006, answer the question below.



If the total number of candidates appeared for the years 2001 and 2003 put together was 20000 and the number of qualified candidates in 2001 was 7550, then the number of qualified candidates in 2003 was

Options :

1. 2400
2. 2450
3. 4900
4. 7550

Sub-Section Number: 5
Sub-Section Id: 623217299
Question Shuffling Allowed : Yes

Question Number : 64 Question Id : 6232178934 Question Type : MCQ Option Shuffling : Yes Display Question Number : Yes
Single Line Question Option : No Option Orientation : Vertical

Wrong Marks : 0

The full form of USB

Options :

1. University Security Block
2. United Serial Bus
3. Universal Serial Bus
4. Ultra Security Block

Question Number : 65 Question Id : 6232178935 Question Type : MCQ Option Shuffling : Yes Display Question Number : Yes
Single Line Question Option : No Option Orientation : Vertical

Wrong Marks : 0

An unsolicited e-mail message sent to many recipients at once is a

Options :

1. Worm
2. Virus
3. Threat
4. Spam

Question Number : 66 Question Id : 6232178936 Question Type : MCQ Option Shuffling : Yes Display Question Number : Yes
Single Line Question Option : No Option Orientation : Vertical

Wrong Marks : 0

The full form of MOOC is

Options :

1. Massive Open Online Course

2. Massive Online Open Course

3. Massive Original Online Course

4. Massive Oriented Online Course

Question Number : 67 Question Id : 6232178937 Question Type : MCQ Option Shuffling : Yes Display Question Number : Yes
Single Line Question Option : No Option Orientation : Vertical
Wrong Marks : 0

TCP/IP is necessary if one is to connect to the

Options :

1. Phone lines

2. LAN

3. Internet

4. Server

Question Number : 68 Question Id : 6232178938 Question Type : MCQ Option Shuffling : Yes Display Question Number : Yes
Single Line Question Option : No Option Orientation : Vertical
Wrong Marks : 0

“SWAYAM” platform is developed by

Options :

1. MHRD with the help of Microsoft

2. AICTE with the help of Microsoft

3. MHRD and AICTE with the help of Microsoft

4. UGC with the help of Microsoft

Question Number : 69 Question Id : 6232178939 Question Type : MCQ Option Shuffling : Yes Display Question Number : Yes
Single Line Question Option : No Option Orientation : Vertical

Wrong Marks : 0

The digital repository of Indian Electronic Theses and Dissertations “Shodhganga” set up by

Options :

1. INFLIBNET Centre

2. NPTEL

3. UGC

4. AICTE

Question Number : 70 Question Id : 6232178940 Question Type : MCQ Option Shuffling : Yes Display Question Number : Yes
Single Line Question Option : No Option Orientation : Vertical

Wrong Marks : 0

The following is not the benefit of ICT Governance.

Options :

1. Increase transparency

2. Higher availability of public domain information

3. Increase efficiency due to connectivity

4. Reduce security of information

Question Number : 71 Question Id : 6232178941 Question Type : MCQ Option Shuffling : Yes Display Question Number : Yes
Single Line Question Option : No Option Orientation : Vertical

Wrong Marks : 0

Which of the following enable one to send the same letter to different persons in MSWORD

Options :

1. Mail join

2. Mail copy

3. Mail insert

4. Mail merge

Question Number : 72 Question Id : 6232178942 Question Type : MCQ Option Shuffling : Yes Display Question Number : Yes
Single Line Question Option : No Option Orientation : Vertical

Wrong Marks : 0

Which of the following is not a/an image/graphic format?

Options :

1. PNG

2. GIF

3. BMP

4. GUI

Question Number : 73 Question Id : 6232178943 Question Type : MCQ Option Shuffling : Yes Display Question Number : Yes
Single Line Question Option : No Option Orientation : Vertical

Wrong Marks : 0

Which of the following statements is related to sustainability

Options :

1. It refers to a process or state that can be maintained indefinitely.
2. Natural resources must be used in ways that create ecological debts.
3. Consumption of the total natural capital stock.
4. None of the other options

Question Number : 74 Question Id : 6232178944 Question Type : MCQ Option Shuffling : Yes Display Question Number : Yes
Single Line Question Option : No Option Orientation : Vertical

Wrong Marks : 0

Contaminated substances which leak into ground and carried by filtration into ground water is known as

Options :

1. Air pollution
2. Water pollution
3. Noise pollution
4. Land contamination

Question Number : 75 Question Id : 6232178945 Question Type : MCQ Option Shuffling : Yes Display Question Number : Yes
Single Line Question Option : No Option Orientation : Vertical

Wrong Marks : 0

When was the problem of ozone depletion first identified?

Options :

1. 1970
2. 1971

1972

3.

1973

4.

Question Number : 76 Question Id : 6232178946 Question Type : MCQ Option Shuffling : Yes Display Question Number : Yes
Single Line Question Option : No Option Orientation : Vertical

Wrong Marks : 0

Why is the runoff from fertilized agricultural fields, even if free of pesticides, often harmful to the ecosystems of temperate lakes?

Options :

1. The fertilizer promotes the growth of fish to the point where they cannot find enough food to eat.

2. The runoff causes a surface algal bloom, which reduces the penetration of light into the water reducing photosynthesis and thereby which reducing the amount of oxygen in the water.

3. Fertilizer runoff promotes antibiotic resistance

4. The runoff raises the levels of inorganic nutrients in the surface waters to levels that are toxic for algae and other lake organisms.

Question Number : 77 Question Id : 6232178947 Question Type : MCQ Option Shuffling : Yes Display Question Number : Yes
Single Line Question Option : No Option Orientation : Vertical

Wrong Marks : 0

Sulphur - rich fossil fuels _____.

Options :

1. Cause less harm to the environment than other fossil fuels

2. Contribute to global cooling

3. Deplete the ozone layer

4. Contribute to acid rain

Question Number : 78 Question Id : 6232178948 Question Type : MCQ Option Shuffling : Yes Display Question Number : Yes
Single Line Question Option : No Option Orientation : Vertical

Wrong Marks : 0

The most nuclear fuel used in the world is _____.

Options :

1. Thorium-232

2. Uranium-238

3. Uranium-235

4. Plutonium-239

Question Number : 79 Question Id : 6232178949 Question Type : MCQ Option Shuffling : Yes Display Question Number : Yes
Single Line Question Option : No Option Orientation : Vertical

Wrong Marks : 0

Boiling water reactor and pressurised water reactors are

Options :

1. Solar reactor

2. OTEC

3. Biogas reactor

4. Nuclear reactor

Question Number : 80 Question Id : 6232178950 Question Type : MCQ Option Shuffling : Yes Display Question Number : Yes
Single Line Question Option : No Option Orientation : Vertical

Wrong Marks : 0

Which is known as seismic wave?

Options :

1. Tsunami
2. Hurricane
3. Typhoon
4. El Nino

Question Number : 81 Question Id : 6232178951 Question Type : MCQ Option Shuffling : Yes Display Question Number : Yes
Single Line Question Option : No Option Orientation : Vertical

Wrong Marks : 0

With minor exception, which of the following has been phased out completely globally?

Options :

1. Carbon dioxide
2. Carbon monoxide
3. Chlorofluorocarbons
4. Nitrogen dioxide

Question Number : 82 Question Id : 6232178952 Question Type : MCQ Option Shuffling : Yes Display Question Number : Yes
Single Line Question Option : No Option Orientation : Vertical

Wrong Marks : 0

In which medium were instructions given in the Buddhist system of education.

Options :

1. Sanskrit

2. Hindi

3. Pali

4. None of the other options

Question Number : 83 Question Id : 6232178953 Question Type : MCQ Option Shuffling : Yes Display Question Number : Yes
Single Line Question Option : No Option Orientation : Vertical

Wrong Marks : 0

Prime Minister Research Fellowship is for students pursuing Ph.D programme in _____ organization.

Options :

1. State and Central universities

2. Central Universities, IISc, IITs, NITs

3. IISc, IITs, NITs, IISERS, IITs, State and Central Universities

4. IITs and IISC

Question Number : 84 Question Id : 6232178954 Question Type : MCQ Option Shuffling : Yes Display Question Number : Yes
Single Line Question Option : No Option Orientation : Vertical

Wrong Marks : 0

The University Grants Commission was established with which of the following aims?

a) Promotion of research and development in higher education

b) Identifying and sustaining institutions of potential learning

c) Capacity building of teachers

d) Providing autonomy to each and every higher educational institutions in India

Options :

1. (a), (b), (c) and (d)

2. (a), (b), (c)

3. (b), (c), (d)

4. (a), (b), (d)

Question Number : 85 Question Id : 6232178955 Question Type : MCQ Option Shuffling : Yes Display Question Number : Yes
Single Line Question Option : No Option Orientation : Vertical
Wrong Marks : 0

The first Open University in India was set up in the state of

Options :

1. Andhra Pradesh

2. Delhi

3. Tamil Nadu

4. Kerala

Question Number : 86 Question Id : 6232178956 Question Type : MCQ Option Shuffling : Yes Display Question Number : Yes
Single Line Question Option : No Option Orientation : Vertical
Wrong Marks : 0

The study of interaction between living and non-living organisms and environment is called

Options :

1. Ecosystem

2. Ecology

3. Phytogeography

4. Phytosociology

Question Number : 87 Question Id : 6232178957 Question Type : MCQ Option Shuffling : Yes Display Question Number : Yes
Single Line Question Option : No Option Orientation : Vertical

Wrong Marks : 0

Kothari Commission report was submitted to the Government in the year

Options :

1. 1960

2. 1966

3. 1968

4. 1970

Question Number : 88 Question Id : 6232178958 Question Type : MCQ Option Shuffling : Yes Display Question Number : Yes
Single Line Question Option : No Option Orientation : Vertical

Wrong Marks : 0

Common Wealth of learning focussed on promoting

Options :

1. economic development by providing education and teaching skills.

2. knowledge

3. personality development

communication skills.

4.

Question Number : 89 Question Id : 6232178959 Question Type : MCQ Option Shuffling : Yes Display Question Number : Yes
Single Line Question Option : No Option Orientation : Vertical

Wrong Marks : 0

Under CBCS, which of the following is not regarded as a “programme”?

Options :

Certificate

1.

Diploma

2.

Degree

3.

None of the other options

4.

Question Number : 90 Question Id : 6232178960 Question Type : MCQ Option Shuffling : Yes Display Question Number : Yes
Single Line Question Option : No Option Orientation : Vertical

Wrong Marks : 0

Extension of inference is called

Options :

Observation

1.

Conclusions

2.

Analysis

3.

Hypothesis

4.

Section Number :	2
Section type :	Online
Mandatory or Optional:	Mandatory
Number of Questions:	90
Number of Questions to be attempted:	90
Section Marks:	90
Display Number Panel:	Yes
Group All Questions:	No

Sub-Section Number:	1
Sub-Section Id:	623217300
Question Shuffling Allowed :	Yes

**Question Number : 91 Question Id : 6232178961 Question Type : MCQ Option Shuffling : Yes Display Question Number : Yes
Single Line Question Option : No Option Orientation : Vertical**

Wrong Marks : 0

‘Agora’ was provided in Greek towns as a place of _____

Options :

1. Worship
2. Drama
3. Sports
4. Meeting

**Question Number : 92 Question Id : 6232178962 Question Type : MCQ Option Shuffling : Yes Display Question Number : Yes
Single Line Question Option : No Option Orientation : Vertical**

Wrong Marks : 0

ECBC stands for —

Options :

1. Electrical Conduit in Building Construction
2. Energy Conservation Building Code
3. Electrical Credit in Building Code

Energy Credit in Building Construction

4.

Question Number : 93 Question Id : 6232178963 Question Type : MCQ Option Shuffling : Yes Display Question Number : Yes
Single Line Question Option : No Option Orientation : Vertical

Wrong Marks : 0

Match the books in **Group I** with their authors in **Group II**:

Group I

P. Space, Time and Architecture

Q. Form, Space and Order

R. The Death and Life of Great American Cities

S. The Image of the City

Group II

1. Jane Jacob

2. Kevin Lynch

3. Ian McHarg

4. Francis D K Ching

5. Gideon S

Options :

1. P-5, Q-4, R-3, S-2

2. P-5, Q-4, R-1, S-2

3. P-4, Q-3, R-2, S-1

4. P-4, Q-1, R-3, S-5

Question Number : 94 Question Id : 6232178964 Question Type : MCQ Option Shuffling : Yes Display Question Number : Yes
Single Line Question Option : No Option Orientation : Vertical

Wrong Marks : 0

Match the schemes in **Group I** with their specific targets in **Group II**:

Group I

P. JNNURM

Q. IAY

R. PURA

S. NREGA

Group II

1. Urban Amenities for Rural Areas

2. Infrastructure and Slum Upgradation

3. Rural Employment

4. Land Acquisition

5. Housing for BPL families

Options :

1. P-2, Q-5, R-1, S-3

2. P-5, Q-2, R-1, S-3

3. P-5, Q-2, R-3, S-4

4. P-2, Q-5, R-3, S-4

Question Number : 95 Question Id : 6232178965 Question Type : MCQ Option Shuffling : Yes Display Question Number : Yes
Single Line Question Option : No Option Orientation : Vertical

Wrong Marks : 0

BEES is an acronym for —

Options :

1. Building for Environmental and Economic Sustainability

2. Built Environment and Ecological Society

3. Building for Energy and Environment Sustainability

4. Built Environment and Engineering Services

Wrong Marks : 0

Match the concepts in **Group I** with the personalities in **Group II**:

Group I

P. Linear City

Q. Radiant City

R. Garden City

S. Arcology

Group II

1. Le Corbusier

2. Paolo Soleri

3. Louis I Kahn

4. Soria Y Mata

5. Ebenezer Howard

Options :

1. P-4, Q-3, R-5, S-1

2. P-3, Q-1, R-4, S-2

3. P-4, Q-1, R-5, S-2

4. P-1, Q-5, R-2, S-4

Wrong Marks : 0

Match the terminologies of **Group I** with their corresponding meanings in **Group II**:

Group I

P. Antarala

Q. Mandapa

R. Gopuram

S. Prasada

Group II

1. Ante-chamber

2. Palace hall

3. Womb chamber

4. Gateway

5. Pillared sanctuary

Options :

1. P-4, Q-3, R-5, S-1

2. P-3, Q-1, R-4, S-2

3. P-4, Q-1, R-5, S-2

4. P-1, Q-5, R-4, S-2

Question Number : 98 Question Id : 6232178968 Question Type : MCQ Option Shuffling : Yes Display Question Number : Yes
Single Line Question Option : No Option Orientation : Vertical

Wrong Marks : 0

Match the locations in **Group I** with the corresponding traps in **Group II**:

Group I

P. Inspection chamber

Q. Wash basin

R. Bathing space

S. European water closet

Group II

1. P-Trap

2. Gully Trap

3. S-Trap

4. Bottle Trap

5. Floor Trap

Options :

1. P-2, Q-1, R-4, S-2

2. P-4, Q-5, R-2, S-3

3. P-2, Q-4, R-5, S-3

4. P-2, Q-3, R-4, S-1

Question Number : 99 Question Id : 6232178969 Question Type : MCQ Option Shuffling : Yes Display Question Number : Yes
Single Line Question Option : No Option Orientation : Vertical

Wrong Marks : 0

Match the historical buildings in **Group I** with their styles in **Group II**:

Group I

P. Pantheon, Rome

Q. St. Paul's Cathedral, London

R. St. Peter's Basilica, Rome

S. Notre Dame, Paris

Group II

1. Baroque

2. Roman

3. Romanesque

4. Renaissance

5. Gothic

Options :

1. P-2, Q-1, R-4, S-5

2. P-4, Q-5, R-2, S-3

3. P-2, Q-4, R-5, S-3

4. P-2, Q-3, R-4, S-1

Question Number : 100 Question Id : 6232178970 Question Type : MCQ Option Shuffling : Yes Display Question Number : Yes
Single Line Question Option : No Option Orientation : Vertical

Wrong Marks : 0

'Finger Plan' concept of urban planning was initially adopted in _____.

Options :

1. Delhi

2. Copenhagen

3. New York

4. Giza

Question Number : 101 Question Id : 6232178971 Question Type : MCQ Option Shuffling : Yes Display Question Number : Yes
Single Line Question Option : No Option Orientation : Vertical

Wrong Marks : 0

Name the architect who criticized ornament in architecture in his essay 'Ornament and Crime.'

Options :

1. John Ruskin
2. HP Berlage
3. Adolf Loss
4. Walter Gropius

Question Number : 102 Question Id : 6232178972 Question Type : MCQ Option Shuffling : Yes Display Question Number : Yes
Single Line Question Option : No Option Orientation : Vertical

Wrong Marks : 0

A typical Roof top Rain water Harvesting System essentially comprises of

P. Roof Catchment

Q. Down Pipes

R. Rain Gauge

S. Filter Chamber

Options :

1. P, R
2. P, R, S
3. Q, R, S
4. P, Q, S

Question Number : 103 Question Id : 6232178973 Question Type : MCQ Option Shuffling : Yes Display Question Number : Yes
Single Line Question Option : No Option Orientation : Vertical

Wrong Marks : 0

U Value refers to

Options :

Utility functions for convenient heat transfer

1.

Thermal transmittance of building component

2.

Energy transfer between thermal bridges

3.

Measure of area related heating and cooling load

4.

Question Number : 104 Question Id : 6232178974 Question Type : MCQ Option Shuffling : Yes Display Question Number : Yes
Single Line Question Option : No Option Orientation : Vertical

Wrong Marks : 0

Transfer of Development Right (TDR) is a tool used for —

Options :

Human Development

1.

Land Development

2.

Economic Development

3.

Infrastructure Development

4.

Question Number : 105 Question Id : 6232178975 Question Type : MCQ Option Shuffling : Yes Display Question Number : Yes
Single Line Question Option : No Option Orientation : Vertical

Wrong Marks : 0

The efficiency of a modern housing scheme can be best accessed by —

P: Efficient planning of a dwelling unit Q: Better Carpet area ratio

R: Imported finishes and textures S: Good general common facilities

T: Good landscaping

Options :

R, S, T

1.

2. Q, S, T

3. P, Q, S

4. P, R, T

Question Number : 106 Question Id : 6232178976 Question Type : MCQ Option Shuffling : Yes Display Question Number : Yes
Single Line Question Option : No Option Orientation : Vertical

Wrong Marks : 0

Gate Valves are used in water supply lines to —

Options :

1. Isolate parts of the network

2. Drain out excess water

3. Release air trapped in pipe lines

4. Limit the flow of water

Question Number : 107 Question Id : 6232178977 Question Type : MCQ Option Shuffling : Yes Display Question Number : Yes
Single Line Question Option : No Option Orientation : Vertical

Wrong Marks : 0

Earnest money is required to be deposited by a tenderer —

Options :

1. Before acquiring a tender document

2. Before the Bid is open

3. After the contract is awarded

4. Before getting the payment against the last bill

Question Number : 108 Question Id : 6232178978 Question Type : MCQ Option Shuffling : Yes Display Question Number : Yes
Single Line Question Option : No Option Orientation : Vertical

Wrong Marks : 0

Designer of Roof less Church —

Options :

1. Kenzo Tange
2. Philip Johnson
3. Bruce Goff
4. Eero Saarinen

Question Number : 109 Question Id : 6232178979 Question Type : MCQ Option Shuffling : Yes Display Question Number : Yes
Single Line Question Option : No Option Orientation : Vertical

Wrong Marks : 0

In Taipei 101 Building, the steel sphere as TMD (Tuned Mass Damper) is suspended to reduce horizontal sway due to —

Options :

1. Settlement and wind load
2. Wind and geothermal load
3. Seismic and geo-thermal load
4. Seismic and wind load

Question Number : 110 Question Id : 6232178980 Question Type : MCQ Option Shuffling : Yes Display Question Number : Yes
Single Line Question Option : No Option Orientation : Vertical

Wrong Marks : 0

For proper ventilation, ratio between opening area to total floor area of a room in warm humid climate should be —

Options :

1. 1:6

2. 1:10

3. 1:12

4. 1:20

Question Number : 111 Question Id : 6232178981 Question Type : MCQ Option Shuffling : Yes Display Question Number : Yes
Single Line Question Option : No Option Orientation : Vertical

Wrong Marks : 0

The Venice Charter 1964 led to the establishment of —

Options :

1. ICCROM

2. ICOMOS

3. INTACH

4. ASI

Question Number : 112 Question Id : 6232178982 Question Type : MCQ Option Shuffling : Yes Display Question Number : Yes
Single Line Question Option : No Option Orientation : Vertical

Wrong Marks : 0

The ratio between illumination at a working point indoor to total light available simultaneously outdoor is known as —

Options :

1. Day light factor

2. Sky Component

3. Internally reflected component

4. Externally reflected component

Question Number : 113 Question Id : 6232178983 Question Type : MCQ Option Shuffling : Yes Display Question Number : Yes
Single Line Question Option : No Option Orientation : Vertical

Wrong Marks : 0

Which of the following vehicular traffic intersections converts all crossings into merging and diverging sequences —

Options :

1. Rotary
2. Manual Signalling
3. Grade Separation
4. Automatic Signalling

Question Number : 114 Question Id : 6232178984 Question Type : MCQ Option Shuffling : Yes Display Question Number : Yes
Single Line Question Option : No Option Orientation : Vertical

Wrong Marks : 0

Pritzker Prize winner of 2019 is —

Options :

1. BV Doshi
2. Thom Mayne
3. Arata Isozaki
4. Raj Rewal

Question Number : 115 Question Id : 6232178985 Question Type : MCQ Option Shuffling : Yes Display Question Number : Yes
Single Line Question Option : No Option Orientation : Vertical

Wrong Marks : 0

In Critical Path Method (CPM) for time scheduling, 'forward pass calculation' is carried out for determining —

Options :

1. Late start and early finish time

2. Early start and early finish time

3. Late start and late finish time

4. Early start and late finish time

Question Number : 116 Question Id : 6232178986 Question Type : MCQ Option Shuffling : Yes Display Question Number : Yes
Single Line Question Option : No Option Orientation : Vertical

Wrong Marks : 0

Collapse of the World Trade Centre (WTC), New York, in 2001, was due to —

Options :

1. Wind load failure

2. Foundation failure

3. Thermal performance failure of reinforcement steel in RCC

4. Thermal performance failure of structural steel

Question Number : 117 Question Id : 6232178987 Question Type : MCQ Option Shuffling : Yes Display Question Number : Yes
Single Line Question Option : No Option Orientation : Vertical

Wrong Marks : 0

During the construction of tall buildings, the equipment used for hoisting building materials to the upper floors is a —

Options :

1. Goods lift

2. Capsule lift

3. Gantry crane

4. Tower crane

Question Number : 118 Question Id : 6232178988 Question Type : MCQ Option Shuffling : Yes Display Question Number : Yes
Single Line Question Option : No Option Orientation : Vertical

Wrong Marks : 0

A Rock-cut style of architecture is represented by —

Options :

1. Shyama Rama Temple, Bishnupur
2. Kailasa Temple, Ellora
3. Kandariya Mahadeva Temple, Khajuraho
4. Sanchi Stupa, Sanchi

Question Number : 119 Question Id : 6232178989 Question Type : MCQ Option Shuffling : Yes Display Question Number : Yes
Single Line Question Option : No Option Orientation : Vertical

Wrong Marks : 0

As per the Urban and Regional Development Plan Formulation and Implementation (URDPFI) guidelines, the plan period considered in a 'Perspective plan' is —

Options :

1. 1-10 years
2. 11-15 years
3. 20-30 years
4. 35-45 years

Question Number : 120 Question Id : 6232178990 Question Type : MCQ Option Shuffling : Yes Display Question Number : Yes
Single Line Question Option : No Option Orientation : Vertical

Wrong Marks : 0

'Sight Distance' is considered in the design of —

Options :

1. Road intersection

2. Fenestration

3. Open kitchen

4. Auditorium

Question Number : 121 Question Id : 6232178991 Question Type : MCQ Option Shuffling : Yes Display Question Number : Yes
Single Line Question Option : No Option Orientation : Vertical

Wrong Marks : 0

Match the planning documents in **Group-I** with their respective government schemes in

Group-II:

Group-I

P. Integrated Cluster Action Plan

Q. Service Level Improvement Plan

R. Housing for All Plan of Action

S. City Livelihood Centre Development Plan

Group-II

1. NULM

2. Make in India

3. RuRBAN mission

4. PMAY

5. AMRUT

Options :

1. P-4, Q-1, R-5, S-2

2. P-3, Q-5, R-4, S-2

3. P-5, Q-1, R-4, S-3

4. P-3, Q-5, R-4, S-1

Question Number : 122 Question Id : 6232178992 Question Type : MCQ Option Shuffling : Yes Display Question Number : Yes
Single Line Question Option : No Option Orientation : Vertical

Wrong Marks : 0

Match the iconic architectural examples in **Group-I** with their predominant structural systems in

Group-II:

Group-I

P. Santa Maria de Fiore Cathedral, Florence

Q. Notre Dame Cathedral, Paris

R. Olympic Arena, Tokyo

S. Bahá'í Temple, Delhi

Group-II

1. Shell

2. Suspended roof

3. Space frame

4. Double-walled dome

5. Flying buttress

Options :

1. P-1, Q-3, R-5, S-4

2. P-4, Q-1, R-2, S-3

3. P-4, Q-5, R-2, S-1

4. P-5, Q-4, R-3, S-2

Question Number : 123 Question Id : 6232178993 Question Type : MCQ Option Shuffling : Yes Display Question Number : Yes
Single Line Question Option : No Option Orientation : Vertical

Wrong Marks : 0

Match the building configuration characteristics in **Group-I** with their seismic consequences in

Group-II:

Group-I

P. Re-entrant corner

Q. Floating column

R. Irregular storey stiffness

S. Gap between adjacent buildings

Group-II

1. Soft storey

2. Stress concentration at corner

3. Load path discontinuity

4. Vertical asymmetry

5. Pounding

Options :

1. P-3, Q-1, R-2, S-4

2. P-2, Q-3, R-1, S-5

3. P-4, Q-3, R-1, S-5

4. P-3, Q-5, R-2, S-1

Question Number : 124 Question Id : 6232178994 Question Type : MCQ Option Shuffling : Yes Display Question Number : Yes
Single Line Question Option : No Option Orientation : Vertical

Wrong Marks : 0

The concept of Transit Oriented Development (TOD) refers to —

Options :

1. Transit oriented planning in institutional campuses

2. High density development along a mass transit corridor

3. Orienting residential blocks towards the transit in a gated community

4. Spatial design for persons with disabilities along a mass transit corridor

Question Number : 125 Question Id : 6232178995 Question Type : MCQ Option Shuffling : Yes Display Question Number : Yes
Single Line Question Option : No Option Orientation : Vertical

Wrong Marks : 0

Match the landscaping terms in **Group-I** with their descriptions in **Group-II**:

Group-I

P. Xeriscaping

Q. Drip line

R. Swale

S. Turf block paver

Group-II

1. Wide vegetated drain

2. Tree rings

3. Outermost circumference of a tree canopy

4. Solution to topsoil erosion and water permeability

5. A little or no irrigation

Options :

1. P-5, Q-3, R-1, S-4

2. P-3, Q-5, R-1, S-4

3. P-2, Q-3, R-1, S-5

4. P-5, Q-2, R-4, S-1

Question Number : 126 Question Id : 6232178996 Question Type : MCQ Option Shuffling : Yes Display Question Number : Yes
Single Line Question Option : No Option Orientation : Vertical

Wrong Marks : 0

The components measuring Human Development Index (HDI) of a nation are —

Options :

1. Life expectancy, Education and Per Capita Income

2. Life expectancy, Economy and Housing

3. Health, Development and Per Capita Income

4. Housing, Health and Hygiene

Question Number : 127 Question Id : 6232178997 Question Type : MCQ Option Shuffling : Yes Display Question Number : Yes
Single Line Question Option : No Option Orientation : Vertical

Wrong Marks : 0

‘Summit Curve’ is a term associated with the design of —

Options :

1. Roads and flyovers

2. Escalators and elevators

3. Tensile fabric structures

4. Geodesic domes

Wrong Marks : 0

As per Census of India 2011, Nagar Panchayat refers to —

Options :

1. Rural area surrounded by a growing city
2. Urban area within a panchayat
3. Rural area adjacent to a nagar
4. Urban area with a statutory local government

Wrong Marks : 0

Super plasticizer is added in a concrete mix to —

Options :

1. Reduce the water-cement ratio for a given workability
2. Increase the water-cement ratio for a given workability
3. Reduce the flow
4. Reduce the content of coarse aggregate

Wrong Marks : 0

Shodhan House, Ahmedabad was designed by —

Options :

1. Anant Raje
2. Le Corbusier

Louis I. Kahn

3.

B. V. Doshi

4.

Question Number : 131 Question Id : 6232179001 Question Type : MCQ Option Shuffling : Yes Display Question Number : Yes
Single Line Question Option : No Option Orientation : Vertical

Wrong Marks : 0

Arcaded Cloister in a Mosque is termed as —

Options :

Maqsurah

1.

Liwan

2.

Pulpit

3.

Kanjura

4.

Question Number : 132 Question Id : 6232179002 Question Type : MCQ Option Shuffling : Yes Display Question Number : Yes
Single Line Question Option : No Option Orientation : Vertical

Wrong Marks : 0

Archaeological Survey of India is under control of —

Options :

Ministry of Urban Development

1.

Ministry of Tourism

2.

Ministry of Earth Sciences

3.

Ministry of Culture

4.

Question Number : 133 Question Id : 6232179003 Question Type : MCQ Option Shuffling : Yes Display Question Number : Yes
Single Line Question Option : No Option Orientation : Vertical

Wrong Marks : 0

Which one of the following piles has bulbous expansion in intervals?

Options :

1. Under-reamed Pile
2. Raymond Pile
3. Vibro Pile
4. Franki Pile

Question Number : 134 Question Id : 6232179004 Question Type : MCQ Option Shuffling : Yes Display Question Number : Yes
Single Line Question Option : No Option Orientation : Vertical

Wrong Marks : 0

“ _____ ” is a crystalline deposit of salts that can form when water is present in or on brick, concrete, stone, stucco or other building surfaces. Fill the blank with appropriate word from the following.

Options :

1. Flaking
2. Bleaching
3. Efflorescence
4. Buckling

Question Number : 135 Question Id : 6232179005 Question Type : MCQ Option Shuffling : Yes Display Question Number : Yes
Single Line Question Option : No Option Orientation : Vertical

Wrong Marks : 0

The wedge-shaped block used to construct an arch is —

Options :

1. Haunch

2. Abutment

3. Pier

4. Voussoir

Question Number : 136 Question Id : 6232179006 Question Type : MCQ Option Shuffling : Yes Display Question Number : Yes
Single Line Question Option : No Option Orientation : Vertical

Wrong Marks : 0

Associate the terms in **Group-I** with the building hardware in **Group-II**:

Group-I

P. Parliamentary

Q. Aldrop

R. Panic

S. Mortise

Group-II

1. Bar

2. Lock

3. Hinge

4. Bolt

Options :

1. P-3, Q-1, R-2, S-4

2. P-2, Q-4, R-1, S-3

3. P-3, Q-4, R-1, S-2

4. P-2, Q-3, R-4, S-1

Question Number : 137 Question Id : 6232179007 Question Type : MCQ Option Shuffling : Yes Display Question Number : Yes
Single Line Question Option : No Option Orientation : Vertical

Wrong Marks : 0

Match the terms in **Group-I** with the related terms in **Group-II**:

Group-I

P. Acquisition

Q. Planning permission

R. Building plan sanction

S. Mutation

Group-II

1. Ownership

2. Construction

3. Land cover

4. Land use

5. Land

Options :

1. P-5, Q-4, R-2, S-1

2. P-5, Q-3, R-1, S-2

3. P-3, Q-4, R-5, S-1

4. P-5, Q-3, R-2, S-4

Question Number : 138 Question Id : 6232179008 Question Type : MCQ Option Shuffling : Yes Display Question Number : Yes
Single Line Question Option : No Option Orientation : Vertical

Wrong Marks : 0

Match the instruments in **Group-I** with the corresponding usage in **Group-II**:

Group-I

P. Pyranometer

Q. Heliodon

R. Total Station

S. Anemometer

Group-II

1. Shadow analysis

2. Seismic intensity

3. Wind velocity

4. Solar radiation

5. Land survey

Options :

1. P-2, Q-1, R-5, S-3

2. P-4, Q-3, R-1, S-2

3. P-4, Q-1, R-5, S-3

4. P-1, Q-4, R-2, S-3

Question Number : 139 Question Id : 6232179009 Question Type : MCQ Option Shuffling : Yes Display Question Number : Yes
Single Line Question Option : No Option Orientation : Vertical

Wrong Marks : 0

As per the Census of India 2011, 'Metropolitan Urban Agglomeration' is a contiguous spread of several urban settlements where the minimum population size (in lakh) is —

Options :

1. One

2. Five

3. Ten

4. Fifty

Question Number : 140 Question Id : 6232179010 Question Type : MCQ Option Shuffling : Yes Display Question Number : Yes
Single Line Question Option : No Option Orientation : Vertical

Wrong Marks : 0

Among the following, the one that is NOT a land assembly technique is —

Options :

1. Land Use Zoning

2. Accommodation Reservation

3. Town Planning Scheme

4. Transfer of Development Right

Question Number : 141 Question Id : 6232179011 Question Type : MCQ Option Shuffling : Yes Display Question Number : Yes
Single Line Question Option : No Option Orientation : Vertical

Wrong Marks : 0

An element constructed at intervals along the length of a wall to stabilize it against overturning is

Options :

1. Barrel Vault

2. Pilaster

3. Squinch Arch

4. Buttress

Question Number : 142 Question Id : 6232179012 Question Type : MCQ Option Shuffling : Yes Display Question Number : Yes
Single Line Question Option : No Option Orientation : Vertical

Wrong Marks : 0

The sequence of development in a Site-and-Services scheme is —

Options :

1. Land – Service – House – Occupant

2. Occupant – Land – House – Service

3. Occupant – Land – Service – House

4. Land – Occupant – House – Service

Question Number : 143 Question Id : 6232179013 Question Type : MCQ Option Shuffling : Yes Display Question Number : Yes
Single Line Question Option : No Option Orientation : Vertical

Wrong Marks : 0

Arrange the following in ascending order of width —

P. Collector Street

Q. Arterial Road

R. Local Street

S. Sub-Arterial Road

Options :

1. P, Q, S, R

2. R, P, S, Q

3. Q, S, R, P

4. Q, S, P, R

Question Number : 144 Question Id : 6232179014 Question Type : MCQ Option Shuffling : Yes Display Question Number : Yes
Single Line Question Option : No Option Orientation : Vertical

Wrong Marks : 0

In Four-Step Sequential Travel Demand Forecasting, Gravity Model may be used for estimating

Options :

1. Trip generation

2. Trip distribution

3. Modal split

4. Route assignment

Question Number : 145 Question Id : 6232179015 Question Type : MCQ Option Shuffling : Yes Display Question Number : Yes
Single Line Question Option : No Option Orientation : Vertical

Wrong Marks : 0

In a traffic stream, the spot speeds of four vehicles were observed to be 30, 40, 50, 60 km/hr.

The space mean speed of the traffic stream is —

Options :

1. 45.0 km/hr
2. 45.2 km/hr
3. 42.1 km/hr
4. 42.0 km/hr

Question Number : 146 Question Id : 6232179016 Question Type : MCQ Option Shuffling : Yes Display Question Number : Yes Single Line Question Option : No Option Orientation : Vertical

Wrong Marks : 0

For a traffic stream the relationship between speed (u in km/hr) and concentration (k in PCU/km), obtained from actual data, is given that $u = 54.5 - 0.24k$. The optimum speed for the traffic-stream for maximum flow is —

Options :

1. 27.25 km/hr
2. 54.5 km/hr
3. 25.27 km/hr
4. 55.4 km/hr

Question Number : 147 Question Id : 6232179017 Question Type : MCQ Option Shuffling : Yes Display Question Number : Yes Single Line Question Option : No Option Orientation : Vertical

Wrong Marks : 0

A transit line is expected to carry 1800 during the 2-hour morning peak period. Given the round-trip time of 30 minutes and an average vehicle occupancy of 75 passengers, the required fleet size to support the peak flow would be —

Options :

1. 15
2. 12

3. 18

4. 6

Question Number : 148 Question Id : 6232179018 Question Type : MCQ Option Shuffling : Yes Display Question Number : Yes
Single Line Question Option : No Option Orientation : Vertical

Wrong Marks : 0

A 50 m long subway pedestrian corridor is being planned to a pedestrian flow of 180 persons/min with an average speed of 1.25 m/sec and an average space of 2.5 m²/person. The required minimum width of the corridor (in meter) is —

Options :

1. 10

2. 8

3. 9

4. 6

Question Number : 149 Question Id : 6232179019 Question Type : MCQ Option Shuffling : Yes Display Question Number : Yes
Single Line Question Option : No Option Orientation : Vertical

Wrong Marks : 0

The Gaussian curvature for a synclastic surface is always —

Options :

1. positive

2. negative

3. zero

4. undefined

Question Number : 150 Question Id : 6232179020 Question Type : MCQ Option Shuffling : Yes Display Question Number : Yes
Single Line Question Option : No Option Orientation : Vertical

Wrong Marks : 0

Match the following terminologies in **Group I** with their descriptions in **Group II**:

Group I

Group II

- | | |
|-------------|---|
| P. Pruning | 1. Useful in reproducing plants that would not breed true if propagated by seed |
| Q. Topiary | 2. A live bud from a desired plant inserted into a host plant |
| R. Grafting | 3. Cutting of evergreen shrubs into abstract or geometric shapes |
| S. Budding | 4. Trimming and cutting of lawns |
| | 5. Selective cutting of plant branches for better growth |

Options :

1. P-5, Q-3, R-4, S-2
2. P-2, Q-3, R-1, S-5
3. P-3, Q-4, R-1, S-2
4. P-5, Q-3, R-1, S-2

Question Number : 151 Question Id : 6232179021 Question Type : MCQ Option Shuffling : Yes Display Question Number : Yes
Single Line Question Option : No Option Orientation : Vertical

Wrong Marks : 0

Assuming full compaction, strength of concrete is inversely proportional to —

Options :

1. Water - cement ratio
2. Water - sand ratio
3. Water - coarse aggregate ratio
4. Water - plasticiser ratio

Question Number : 152 Question Id : 6232179022 Question Type : MCQ Option Shuffling : Yes Display Question Number : Yes
Single Line Question Option : No Option Orientation : Vertical

Wrong Marks : 0

The face of an icosahedron is —

Options :

1. Equilateral Triangle

2. Isosceles Triangle

3. Square

4. Pentagon

Question Number : 153 Question Id : 6232179023 Question Type : MCQ Option Shuffling : Yes Display Question Number : Yes
Single Line Question Option : No Option Orientation : Vertical

Wrong Marks : 0

Travel behaviour characteristics of an urban area can be derived from

Options :

1. Parking Survey

2. Demographic Survey

3. Socio Economic Survey

4. Origin & Destination Survey

Question Number : 154 Question Id : 6232179024 Question Type : MCQ Option Shuffling : Yes Display Question Number : Yes
Single Line Question Option : No Option Orientation : Vertical

Wrong Marks : 0

Hyperbolic paraboloid can be generated by —

Options :

1. A curve moving over 2 straight lines at an obtuse angle

2. A straight line moving over a curve at an acute angle

3. A curve moving over 2 other parallel lines

4. A straight line moving over 2 other straight lines at an angle to one another

Question Number : 155 Question Id : 6232179025 Question Type : MCQ Option Shuffling : Yes Display Question Number : Yes
Single Line Question Option : No Option Orientation : Vertical

Wrong Marks : 0

A tree of height 13 m is required to shade the entire southern wall of a building of 4 m height. At the solar altitude angle of 45 degrees, what should be the maximum distance of the tree from the wall?

Options :

1. 4 m

2. 9 m

3. 13 m

4. 17 m

Question Number : 156 Question Id : 6232179026 Question Type : MCQ Option Shuffling : Yes Display Question Number : Yes
Single Line Question Option : No Option Orientation : Vertical

Wrong Marks : 0

If the scale of a map is 1:30000, then 1 sq.cm. area of the map would represent —

Options :

1. 9 hectares

2. 15 hectares

3. 17.3 hectares

4. 30 hectares

Question Number : 157 Question Id : 6232179027 Question Type : MCQ Option Shuffling : Yes Display Question Number : Yes
Single Line Question Option : No Option Orientation : Vertical

Wrong Marks : 0

A stack of sand measures 2.5 m x 3.5 m at the top and 3.5 m x 4.5 m at the base. The average height of the stack is 1 m. What is the volume of the sand in the stack?

Options :

1. 10 cu.m.
2. 12 cu.m.
3. 15 cu.m.
4. 18 cu.m.

Question Number : 158 Question Id : 6232179028 Question Type : MCQ Option Shuffling : Yes Display Question Number : Yes
Single Line Question Option : No Option Orientation : Vertical

Wrong Marks : 0

A 4 cm x 4 cm on a map is represented by a land area of 16 hectares on the ground. If the map is transformed to a scale of 1:5000, the same ground area will be represented by —

Options :

1. 80 sq.
2. 32 sq.
3. 64 sq.
4. None of the other options

Question Number : 159 Question Id : 6232179029 Question Type : MCQ Option Shuffling : Yes Display Question Number : Yes
Single Line Question Option : No Option Orientation : Vertical

Wrong Marks : 0

A site has a uniform slope of 6%. The site map has 7 contour lines with the elevation of the highest line is +53 m. If the distance between the mid-point of the highest contour and lowest contour is 700 m, then contour interval in metres is —

Options :

1. 6
2. 7

3. 11

4. 42

Question Number : 160 Question Id : 6232179030 Question Type : MCQ Option Shuffling : Yes Display Question Number : Yes Single Line Question Option : No Option Orientation : Vertical

Wrong Marks : 0

A hall is 15 m long and 12 m wide. If the sum of areas of the floor and ceiling is equal to the sum of the area of its four walls, then the volume of the hall in cubic meter is —

Options :

1. 900

2. 1200

3. 1500

4. 1800

Question Number : 161 Question Id : 6232179031 Question Type : MCQ Option Shuffling : Yes Display Question Number : Yes Single Line Question Option : No Option Orientation : Vertical

Wrong Marks : 0

A set of 4 parallel lines intersect with another set of 5 parallel lines. How many parallelograms are formed?

Options :

1. 20

2. 60

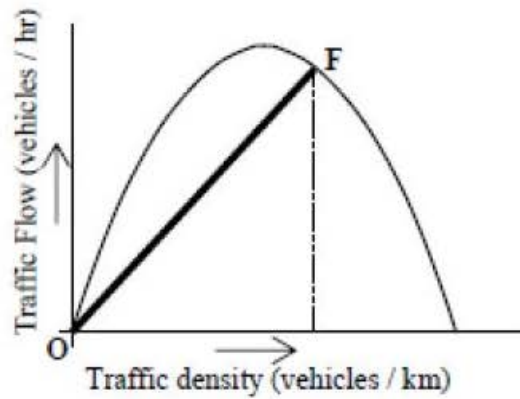
3. 80

4. 100

Question Number : 162 Question Id : 6232179032 Question Type : MCQ Option Shuffling : Yes Display Question Number : Yes Single Line Question Option : No Option Orientation : Vertical

Wrong Marks : 0

In a theoretical traffic flow relationship, as shown in the figure given below, the slope of line **OF** joining point **F** on the curve and the origin **O** represents —



Options :

1. Corresponding space mean speed
2. Speed at maximum flow
3. Travel time at corresponding density
4. Average headway at corresponding flow

Question Number : 163 Question Id : 6232179033 Question Type : MCQ Option Shuffling : Yes Display Question Number : Yes Single Line Question Option : No Option Orientation : Vertical

Wrong Marks : 0

A room of size 100 m^2 is illuminated by 10 lamps of 40 W having a luminous efficacy of 50 lm/W. Total flux emitted by the lamps in lumens would be —

Options :

1. 2,000
2. 5,000
3. 10,000
4. 20,000

Question Number : 164 Question Id : 6232179034 Question Type : MCQ Option Shuffling : Yes Display Question Number : Yes Single Line Question Option : No Option Orientation : Vertical

Wrong Marks : 0

Cost of a new building is Rs. 10,00,000 and its scrap value after 50 years is Rs. 1,00,000. Using straight line method, the annual depreciation of the building in rupees would be —

Options :

1. 10,000
2. 15,000
3. 18,000
4. 20,000

Question Number : 165 Question Id : 6232179035 Question Type : MCQ Option Shuffling : Yes Display Question Number : Yes
Single Line Question Option : No Option Orientation : Vertical

Wrong Marks : 0

In CMYK colour model 'K' represents the colour —

Options :

1. black
2. crimson
3. Kobicha
4. white

Question Number : 166 Question Id : 6232179036 Question Type : MCQ Option Shuffling : Yes Display Question Number : Yes
Single Line Question Option : No Option Orientation : Vertical

Wrong Marks : 0

On the colour wheel, the combination of 'Violet-Yellow' or 'Orange-Blue' are best described as:

Options :

1. Analogous
2. Complementary

3. Monochromatic

4. Supplementary

Question Number : 167 Question Id : 6232179037 Question Type : MCQ Option Shuffling : Yes Display Question Number : Yes
Single Line Question Option : No Option Orientation : Vertical

Wrong Marks : 0

The phenomenon of mind supplying missing parts in a composition is termed as —

Options :

1. closure

2. creation

3. gradation

4. illusion

Question Number : 168 Question Id : 6232179038 Question Type : MCQ Option Shuffling : Yes Display Question Number : Yes
Single Line Question Option : No Option Orientation : Vertical

Wrong Marks : 0

Ponding is associated with

Options :

1. RC column

2. RC slab

3. Steel column

4. Steel truss

Question Number : 169 Question Id : 6232179039 Question Type : MCQ Option Shuffling : Yes Display Question Number : Yes
Single Line Question Option : No Option Orientation : Vertical

Wrong Marks : 0

Aerial photography is a useful tool to obtain —

Options :

1. Land contour data
2. Land cover data
3. Land ownership data
4. Land use data

Question Number : 170 Question Id : 6232179040 Question Type : MCQ Option Shuffling : Yes Display Question Number : Yes
Single Line Question Option : No Option Orientation : Vertical

Wrong Marks : 0

Age- sex cohort for a state of India is obtained from —

Options :

1. Census of India
2. Election commission of India
3. Indian Statistical Institute
4. Survey of India

Question Number : 171 Question Id : 6232179041 Question Type : MCQ Option Shuffling : Yes Display Question Number : Yes
Single Line Question Option : No Option Orientation : Vertical

Wrong Marks : 0

The Kyoto Protocol 2003 addressed the issue of —

Options :

1. Bio- diversity
2. Greenhouse gases
3. Rain water harvesting

Wetlands

4.

Question Number : 172 Question Id : 6232179042 Question Type : MCQ Option Shuffling : Yes Display Question Number : Yes
Single Line Question Option : No Option Orientation : Vertical

Wrong Marks : 0

The breaking of water seal of a trap of a fitting caused by creation of partial vacuum in its stack due to sudden discharge of another fitting connected to the same stack is due to —

Options :

1. induced siphonage

2. partial siphonage

3. seduced siphonage

4. self siphonage

Question Number : 173 Question Id : 6232179043 Question Type : MCQ Option Shuffling : Yes Display Question Number : Yes
Single Line Question Option : No Option Orientation : Vertical

Wrong Marks : 0

Salvage Value is the value of a property at the end of its utility period —

Options :

1. being dismantled

2. without being dismantled

3. both being dismantled & without being dismantled

4. none of the other options

Question Number : 174 Question Id : 6232179044 Question Type : MCQ Option Shuffling : Yes Display Question Number : Yes
Single Line Question Option : No Option Orientation : Vertical

Wrong Marks : 0

Management & Collection Charges account for —

Options :

1. 0-5% of gross rent
2. 5-10% of gross rent
3. 10-15% of gross rent
4. 15-20% of gross rent

Question Number : 175 Question Id : 6232179045 Question Type : MCQ Option Shuffling : Yes Display Question Number : Yes
Single Line Question Option : No Option Orientation : Vertical
Wrong Marks : 0

Among different outgoings, repairs account for —

Options :

1. 5% of the gross rent
2. 10% of the gross rent
3. 15% of the gross rent
4. 20% of the gross rent

Question Number : 176 Question Id : 6232179046 Question Type : MCQ Option Shuffling : Yes Display Question Number : Yes
Single Line Question Option : No Option Orientation : Vertical
Wrong Marks : 0

The value of Solar Constant is —

Options :

1. 1,395 W/m²
2. 3,951 W/m²
3. 5,139 W/m²

4. 9,513 W/m²

Question Number : 177 Question Id : 6232179047 Question Type : MCQ Option Shuffling : Yes Display Question Number : Yes
Single Line Question Option : No Option Orientation : Vertical

Wrong Marks : 0

The term applied to a brick which is half as wide as a full brick is —

Options :

1. Bevelled Closer
2. King Closer
3. Mitred Closer
4. Queen Closer

Question Number : 178 Question Id : 6232179048 Question Type : MCQ Option Shuffling : Yes Display Question Number : Yes
Single Line Question Option : No Option Orientation : Vertical

Wrong Marks : 0

A charged vertical water main inside a building, connected to a water main or an automatic stationary pump and fitted with internal hydrants, landing valves / hose reels for tapping water at various floors, is termed as —

Options :

1. Downcomer
2. Dry Riser
3. Wet Riser
4. none of the other options

Question Number : 179 Question Id : 6232179049 Question Type : MCQ Option Shuffling : Yes Display Question Number : Yes
Single Line Question Option : No Option Orientation : Vertical

Wrong Marks : 0

Acceptable indoor noise level for 'apartment' is —

Options :

1. 20-25dB
2. 25-30dB
3. 35-40dB
4. 40-45db

Question Number : 180 Question Id : 6232179050 Question Type : MCQ Option Shuffling : Yes Display Question Number : Yes
Single Line Question Option : No Option Orientation : Vertical

Wrong Marks : 0

The term 'Post-Modernism' was formally defined by —

Options :

1. Jacques Derridas
2. Charles Jenks
3. Philip Cortelyou Johnson
4. Mies van der Rohe