

Andhra Pradesh State Council of Higher Education

Question Paper Name: ANTHROPOLOGY
Subject Name: ANTHROPOLOGY
Creation Date: 2019-11-10 15:11:46
Duration: 180
Total Marks: 180
Display Marks: Yes
Share Answer Key With Delivery Engine: Yes

ANTHROPOLOGY

Group Number : 1
Group Id : 62321749
Group Maximum Duration : 0
Group Minimum Duration : 180
Revisit allowed for view? : No
Revisit allowed for edit? : No
Break time: 0
Group Marks: 180
Revisit allowed for group Instructions? : Yes
Maximum Instruction Time: 0
Minimum Instruction Time: 0

Teaching and Research Aptitude

Section Id : 62321797
Section Number : 1
Section type : Online
Mandatory or Optional: Mandatory
Number of Questions: 82
Number of Questions to be attempted: 82
Section Marks: 90
Display Number Panel: Yes
Group All Questions: No

Sub-Section Number: 1
Sub-Section Id: 623217289
Question Shuffling Allowed : Yes

Question Number : 1 Question Id : 6232178689 Question Type : MCQ Option Shuffling : Yes Display Question Number : Yes
Single Line Question Option : No Option Orientation : Vertical

Wrong Marks : 0

The Teacher has been glorified by the phrase “Friend, Philosopher and guide” because

Options :

1. He is a great reformer of the society
2. He has to play all vital roles in the context of society.
3. He transmits the high value of humanity to students.
4. He is a great patriot

Question Number : 2 Question Id : 6232178690 Question Type : MCQ Option Shuffling : Yes Display Question Number : Yes
Single Line Question Option : No Option Orientation : Vertical

Wrong Marks : 0

What are the characteristics of continuous and comprehensive evaluation?

- a. It increases the workload on students by taking multiple tests.
- b. It replaces marks with grades.
- c. It evaluates every aspect of the student
- d. It helps in reducing examination phobia

Options :

1. (a), (b), (c) and (d)
2. (b) and (c)
3. (a), (b) and (c)
4. (b), (c) and (d)

Question Number : 3 Question Id : 6232178691 Question Type : MCQ Option Shuffling : Yes Display Question Number : Yes
Single Line Question Option : No Option Orientation : Vertical

Wrong Marks : 0

Before teaching a teacher should

Options :

1. Know the existing knowledge of his students and their background knowledge

2. be aware of the environmental variables acting on the mind of the pupils

3. be competent enough to arouse the curiosity of his pupils

4. All of the other options

Question Number : 4 Question Id : 6232178692 Question Type : MCQ Option Shuffling : Yes Display Question Number : Yes
Single Line Question Option : No Option Orientation : Vertical

Wrong Marks : 0

The major responsibility with which the school personnel have been entrusted is that

Options :

1. It harmonizes the needs of the child and demands of the society for the mutual benefit

2. It makes the child employable

3. It prepares the school programme according to the need of the child.

4. All of the other options

Question Number : 5 Question Id : 6232178693 Question Type : MCQ Option Shuffling : Yes Display Question Number : Yes
Single Line Question Option : No Option Orientation : Vertical

Wrong Marks : 0

Moral values can be effectively inculcated among the students when the teacher.

Options :

1. Frequently talks about the values.

2. Himself practices them

3. Tells stories of great persons

Talks of gods and goddesses

4.

Question Number : 6 Question Id : 6232178694 Question Type : MCQ Option Shuffling : Yes Display Question Number : Yes
Single Line Question Option : No Option Orientation : Vertical

Wrong Marks : 0

Which of the following is not an example of learner centred method.

Options :

1. Closed ended method

1.

2. Discussion method

2.

3. Discovery based

3.

4. survey method

4.

Question Number : 7 Question Id : 6232178695 Question Type : MCQ Option Shuffling : Yes Display Question Number : Yes
Single Line Question Option : No Option Orientation : Vertical

Wrong Marks : 0

The highest level of cognitive domain as per revised blooms taxonomy

Options :

1. Applying

1.

2. Analysing

2.

3. Creating

3.

4. Evaluating

4.

Question Number : 8 Question Id : 6232178696 Question Type : MCQ Option Shuffling : Yes Display Question Number : Yes
Single Line Question Option : No Option Orientation : Vertical

Wrong Marks : 0

As per the UGC recommendations which of the following grade point is correct for B+ grade?

Options :

1. 9

2. 7

3. 8

4. 6

Question Number : 9 Question Id : 6232178697 Question Type : MCQ Option Shuffling : Yes Display Question Number : Yes
Single Line Question Option : No Option Orientation : Vertical

Wrong Marks : 0

The teacher's role at the higher educational level is to:

Options :

1. Provide information to students

2. Encourage healthy competition among students.

3. Help students to solve their personal problems.

4. Promote self – learning in students.

Question Number : 10 Question Id : 6232178698 Question Type : MCQ Option Shuffling : Yes Display Question Number : Yes
Single Line Question Option : No Option Orientation : Vertical

Wrong Marks : 0

In the process of conducting research “Formulation of Hypothesis” is followed by

Options :

1. Statement of objectives

2. Selection of research tools

3. Need for the study

4. Problem statement

Question Number : 11 Question Id : 6232178699 Question Type : MCQ Option Shuffling : Yes Display Question Number : Yes
Single Line Question Option : No Option Orientation : Vertical

Wrong Marks : 0

Which of the following variable cannot be expressed in quantitative terms?

Options :

1. Marital status

2. Income

3. Age

4. Experience

Question Number : 12 Question Id : 6232178700 Question Type : MCQ Option Shuffling : Yes Display Question Number : Yes
Single Line Question Option : No Option Orientation : Vertical

Wrong Marks : 0

The form that is filled by investigation to collect information from the respondent is called as

Options :

1. Schedule

2. Report

3. Response sheet

Field report

4.

Question Number : 13 Question Id : 6232178701 Question Type : MCQ Option Shuffling : Yes Display Question Number : Yes
Single Line Question Option : No Option Orientation : Vertical

Wrong Marks : 0

Studying an element and inferences made for the whole universe is called

Options :

1. Inductive logic

1.

2. Deductive logic

2.

3. Predictive logic

3.

4. No logic

4.

Question Number : 14 Question Id : 6232178702 Question Type : MCQ Option Shuffling : Yes Display Question Number : Yes
Single Line Question Option : No Option Orientation : Vertical

Wrong Marks : 0

The following is not a probabilistic sampling scheme.

Options :

1. Stratified random sample

1.

2. Cluster sample

2.

3. Systematic sample

3.

4. Judgement sample

4.

Question Number : 15 Question Id : 6232178703 Question Type : MCQ Option Shuffling : Yes Display Question Number : Yes
Single Line Question Option : No Option Orientation : Vertical

Wrong Marks : 0

The population census carried out by the Government of India is an example of

Options :

1. Exploratory Research
2. Action Research
3. Descriptive Research
4. Analytical Research

Question Number : 16 Question Id : 6232178704 Question Type : MCQ Option Shuffling : Yes Display Question Number : Yes
Single Line Question Option : No Option Orientation : Vertical

Wrong Marks : 0

The following is not a part of Research ethics.

Options :

1. Respect for self interest
2. Respect for Intellectual property
3. Respect for confidentiality
4. Respect to fact presentation

Question Number : 17 Question Id : 6232178705 Question Type : MCQ Option Shuffling : Yes Display Question Number : Yes
Single Line Question Option : No Option Orientation : Vertical

Wrong Marks : 0

Giving credit to individuals for their creative and intellectual works that has been utilised in the research study is called

Options :

1. Bibliography

2. Reference

3. Citation

4. End note

Question Number : 18 Question Id : 6232178706 Question Type : MCQ Option Shuffling : Yes Display Question Number : Yes
Single Line Question Option : No Option Orientation : Vertical

Wrong Marks : 0

Accepting null hypothesis when it is false is called

Options :

1. Type-I error

2. Type-II error

3. Sampling error

4. Parallax error

Sub-Section Number:	2
Sub-Section Id:	623217290
Question Shuffling Allowed :	Yes

Question Id : 6232178707 Question Type : COMPREHENSION Sub Question Shuffling Allowed : Yes Group Comprehension Questions : No

Question Numbers : (19 to 27)

Question Label : Comprehension

Read the following passage and answer the question

We look down upon the insects as almost the lowest of living things, and yet these tiny things have learnt the art of co-operation and of sacrifice for the common good far better than man. Ever since I read of the White Ant and of its sacrifice for its comrades, I have developed a soft corner in my heart for it. If mutual co-operation and sacrifice for the good of society are the tests of civilization, we may say that the White Ant and the Ant are in this respect superior to man.

In one of our old Sanskrit books there is a verse which can be translated as follows: “for the family sacrifice the individual, for the community the family, for the country the community and for the soul the whole world”. What the soul is few of us can know or tell and each one of us can interpret it in a different way. But the lesson this Sanskrit verse teaches us is the same lesson of co-operation and sacrifice for the larger good. We in India had forgotten this sovereign path to real greatness for many a day, and so we had fallen. But again we seem to have glimpses of it, and all the country is astir. How wonderful it is to see men and women, and boys and girls, smilingly going ahead in India’s cause and not caring about any pain or suffering! Well may they smile and be glad, for the joy of serving in a great cause is theirs; and to those who are fortunate comes the joy of sacrifice also. Today we are trying to free India. This is a great thing. But even greater is the cause of humanity itself. And because we feel that our struggle is a part of the great human struggle to end suffering and misery, we can rejoice that we are doing our little bit to help the progress of the world.

Sub questions

Question Number : 19 Question Id : 6232178708 Question Type : MCQ Option Shuffling : Yes Display Question Number : Yes
Single Line Question Option : No Option Orientation : Vertical

Wrong Marks : 0

In which respect are the insects better than man?

Options :

1. More in number

1.

2. Sacrifice for the common good

2.

3. Less complex biological constitution

4. Smaller in size

Question Number : 20 Question Id : 6232178709 Question Type : MCQ Option Shuffling : Yes Display Question Number : Yes
Single Line Question Option : No Option Orientation : Vertical
Wrong Marks : 0

What are the tests of civilization?

Options :

1. Living together and sharing food

2. Devoid of wars

3. Social etiquette

4. Mutual co-operation and sacrifice

Question Number : 21 Question Id : 6232178710 Question Type : MCQ Option Shuffling : Yes Display Question Number : Yes
Single Line Question Option : No Option Orientation : Vertical
Wrong Marks : 0

According to the Sanskrit verse, what should be sacrificed for the sake of the country?

Options :

1. The world

2. The community

3. The family

4. The individual

Question Number : 22 Question Id : 6232178711 Question Type : MCQ Option Shuffling : Yes Display Question Number : Yes
Single Line Question Option : No Option Orientation : Vertical

Wrong Marks : 0

Which concept of human existence can be interpreted in different ways?

Options :

1. The soul

1.

2. The mind

2.

3. The god

3.

4. The life

4.

Question Number : 23 Question Id : 6232178712 Question Type : MCQ Option Shuffling : Yes Display Question Number : Yes
Single Line Question Option : No Option Orientation : Vertical

Wrong Marks : 0

Why had the people of India fallen?

Options :

1. Imitation of western culture

1.

2. Hundreds of years slavery

2.

3. Forgotten the sovereign path

3.

4. Lack of confidence in their culture

4.

Question Number : 24 Question Id : 6232178713 Question Type : MCQ Option Shuffling : Yes Display Question Number : Yes
Single Line Question Option : No Option Orientation : Vertical

Wrong Marks : 0

How did the people of the country stand for India's cause?

Options :

1. Following the National leaders
2. Studying law abroad
3. Being religious
4. Taking pain and suffering in their stride

Question Number : 25 Question Id : 6232178714 Question Type : MCQ Option Shuffling : Yes Display Question Number : Yes
Single Line Question Option : No Option Orientation : Vertical
Wrong Marks : 0

Who were considered fortunate by the author?

Options :

1. The British
2. Freedom fighters
3. Non-Resident Indians
4. The rich of India

Question Number : 26 Question Id : 6232178715 Question Type : MCQ Option Shuffling : Yes Display Question Number : Yes
Single Line Question Option : No Option Orientation : Vertical
Wrong Marks : 0

What is greater than freeing India from the foreign rule?

Options :

1. Working for the cause of humanity
2. Preserving wild life

Balancing ecology

3.

Protecting the water bodies

4.

Question Number : 27 Question Id : 6232178716 Question Type : MCQ Option Shuffling : Yes Display Question Number : Yes
Single Line Question Option : No Option Orientation : Vertical

Wrong Marks : 0

What does taking up the cause of humanity lead to?

Options :

End of suffering and misery

1.

End of greed and desire

2.

Progress of the world

3.

End of poverty

4.

Sub-Section Number: 3
Sub-Section Id: 623217291
Question Shuffling Allowed : Yes

Question Number : 28 Question Id : 6232178717 Question Type : MCQ Option Shuffling : Yes Display Question Number : Yes
Single Line Question Option : No Option Orientation : Vertical

Wrong Marks : 0

An author communicating with a reader through a book is an example of _____.

Options :

No communication

1.

Interpersonal communication

2.

Group communication

3.

Mass communication

4.

Question Number : 29 Question Id : 6232178718 Question Type : MCQ Option Shuffling : Yes Display Question Number : Yes
Single Line Question Option : No Option Orientation : Vertical

Wrong Marks : 0

Differentiation between acceptance and non-acceptance of certain stimuli in classroom communication is the basis of

Options :

1. Selective attention

1.

2. Selective morality

2.

3. Selective expectation of performance

3.

4. Selective application to peer group.

4.

Question Number : 30 Question Id : 6232178719 Question Type : MCQ Option Shuffling : Yes Display Question Number : Yes
Single Line Question Option : No Option Orientation : Vertical

Wrong Marks : 0

Which of the following is NOT one of the primary functions of mass communication.

Options :

1. Correlation

1.

2. Cultural transmission

2.

3. Entertainment

3.

4. Immunization

4.

Question Number : 31 Question Id : 6232178720 Question Type : MCQ Option Shuffling : Yes Display Question Number : Yes
Single Line Question Option : No Option Orientation : Vertical

Wrong Marks : 0

The influence of a group on the attitude of an individual is generally treated in terms of the concept of

Options :

1. Psychological group
2. Physical group
3. Corporative group
4. Reference group

Question Number : 32 Question Id : 6232178721 Question Type : MCQ Option Shuffling : Yes Display Question Number : Yes
Single Line Question Option : No Option Orientation : Vertical

Wrong Marks : 0

Which of the following theories stress that mass media in a society is controlled by the state power?

Options :

1. Normative
2. Authoritarian
3. Libertarian
4. Social responsibility

Question Number : 33 Question Id : 6232178722 Question Type : MCQ Option Shuffling : Yes Display Question Number : Yes
Single Line Question Option : No Option Orientation : Vertical

Wrong Marks : 0

Positive classroom communication leads to

Options :

1. coercion

2. submission

3. confrontation

4. persuasion

Question Number : 34 Question Id : 6232178723 Question Type : MCQ Option Shuffling : Yes Display Question Number : Yes
Single Line Question Option : No Option Orientation : Vertical

Wrong Marks : 0

Deductive communication is

Options :

1. Individual

2. Inter – personal

3. Organizational

4. Relational

Question Number : 35 Question Id : 6232178724 Question Type : MCQ Option Shuffling : Yes Display Question Number : Yes
Single Line Question Option : No Option Orientation : Vertical

Wrong Marks : 0

Which is the essential component of communication?

Options :

1. Understanding

2. Medium

3. Thoughts

Intention

4.

Question Number : 36 Question Id : 6232178725 Question Type : MCQ Option Shuffling : Yes Display Question Number : Yes
Single Line Question Option : No Option Orientation : Vertical

Wrong Marks : 0

Match the following

- | | | |
|-------------------|---|------------------------------|
| A) Pictures | – | 1) High order skills |
| B) high skills | – | 2) Visual communication |
| C) Hums | – | 3) Speech art |
| D) Long Distances | – | 4) Public telephone networks |

Options :

1. A-2 B-3 C-1 D-4

2. A-3 B-2 C-1 D-4

3. A-4 B-2 C-1 D-3

4. A-2 B-1 C-3 D-4

Question Number : 37 Question Id : 6232178726 Question Type : MCQ Option Shuffling : Yes Display Question Number : Yes
Single Line Question Option : No Option Orientation : Vertical

Wrong Marks : 0

The missing number in the sequence of numbers is

4, 5, 9, 18, 34, _____, 95

Options :

1. 43

2. 59

3. 67

4. 54

Question Number : 38 Question Id : 6232178727 Question Type : MCQ Option Shuffling : Yes Display Question Number : Yes
Single Line Question Option : No Option Orientation : Vertical

Wrong Marks : 0

The missing term in the following sequence is

ABC, BDF, _____, DHL

Options :

1. DJO

2. CFI

3. DKL

4. DKN

Question Number : 39 Question Id : 6232178728 Question Type : MCQ Option Shuffling : Yes Display Question Number : Yes
Single Line Question Option : No Option Orientation : Vertical

Wrong Marks : 0

If the numerator of a fraction is increased by 140% and the denominator is increased by

200%, the resultant fraction is $\frac{1}{2}$, then the original fraction is

Options :

1. $\frac{5}{19}$

2. $\frac{5}{9}$

3. $\frac{5}{8}$

4. $\frac{3}{4}$

Question Number : 40 Question Id : 6232178729 Question Type : MCQ Option Shuffling : Yes Display Question Number : Yes
Single Line Question Option : No Option Orientation : Vertical

Wrong Marks : 0

A person lost 20% by selling an article for 700 rupees. What percent shall he gain by selling it for 1200 rupees?

Options :

1. 25

2. 37

3. $37\frac{1}{7}$

4. 40

Question Number : 41 Question Id : 6232178730 Question Type : MCQ Option Shuffling : Yes Display Question Number : Yes
Single Line Question Option : No Option Orientation : Vertical

Wrong Marks : 0

A business man allows a discount of 10% on the marked price of an article. Then how much percentage, above the cost price, the article be marked to make a profit of 35%?

Options :

1. 40

2. 48

3. 55

4.

Question Number : 42 Question Id : 6232178731 Question Type : MCQ Option Shuffling : Yes Display Question Number : Yes
Single Line Question Option : No Option Orientation : Vertical

Wrong Marks : 0

A man travels from the city A to the city B by a car with an average speed of 96 kmph and returns from B to A by the same car with an average speed of 32 kmph. Then the average speed of the car for the entire journey is _____ kmph.

Options :

1. 16

2. 48

3. 64

4. 84

Question Number : 43 Question Id : 6232178732 Question Type : MCQ Option Shuffling : Yes Display Question Number : Yes
Single Line Question Option : No Option Orientation : Vertical

Wrong Marks : 0

In a certain language TABLE is code as UACME, then the code word for CHAIR is

Options :

1. DLATS

2. BLAIQ

3. DHAIS

4. DIBJS

Question Number : 44 Question Id : 6232178733 Question Type : MCQ Option Shuffling : Yes Display Question Number : Yes
Single Line Question Option : No Option Orientation : Vertical

Wrong Marks : 0

If $x:y:z = 2:3:5$, then $\frac{x}{y} : \frac{y}{z} : \frac{z}{x} =$

Options :

1. 20:18:75

2. 6:15:13

3. 10:13:15

4. 6:15:10

Question Number : 45 Question Id : 6232178734 Question Type : MCQ Option Shuffling : Yes Display Question Number : Yes
Single Line Question Option : No Option Orientation : Vertical

Wrong Marks : 0

If an amount X invested with a compound interest rate of 10% per annum become Rs 1,665/- in 3 years. Then the invested amount X is

Options :

1. 3,500

2. 5,555

3. 5,000

4. 6,500

Sub-Section Number: 4
Sub-Section Id: 623217292
Question Shuffling Allowed : No

Question Number : 46 Question Id : 6232178735 Question Type : MCQ Option Shuffling : Yes Display Question Number : Yes
Single Line Question Option : No Option Orientation : Vertical

Wrong Marks : 0

Raju is two seats to Ramu's left. Ranga is three seats to Raju's right. Rao is two seats to Raju's left. Krishna is six seats to Sita's right. Sarma is six seats to Krishna's right. Rao is not sitting next to Raju. Who sits one seat to Sarma's left?

Options :

1. Rao
2. Krishna
3. Raju
4. Sita

Question Number : 47 Question Id : 6232178736 Question Type : MCQ Option Shuffling : Yes Display Question Number : Yes
Single Line Question Option : No Option Orientation : Vertical

Wrong Marks : 0

Two statements are given with two conclusions I and II. Which logical conclusion can be drawn out as per the statements?

Statements: All windows are needles

Some trees are windows

Conclusion: I. Some trees are needles

II. Some trees are not needles

Options :

1. Only conclusion I follows
2. Only conclusion II follows
3. Both conclusions I and II followed
4. Both conclusions I and II are not followed

Question Number : 48 Question Id : 6232178737 Question Type : MCQ Option Shuffling : Yes Display Question Number : Yes
Single Line Question Option : No Option Orientation : Vertical

Wrong Marks : 0

The following series follows a pattern. Identify the pattern and fill the blank.

6, 14, 36, 98, _____.

Options :

1. 276

2. 275

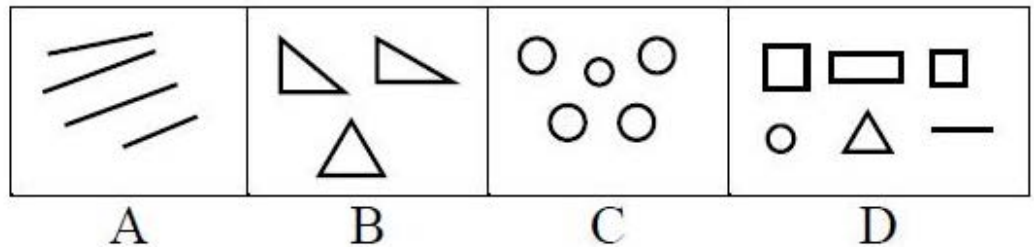
3. 220

4. 274

Question Number : 49 Question Id : 6232178738 Question Type : MCQ Option Shuffling : Yes Display Question Number : Yes
Single Line Question Option : No Option Orientation : Vertical

Wrong Marks : 0

Choose the figure which is different from other.



Options :

1. C

2. B

3. D

4. A

Question Number : 50 Question Id : 6232178739 Question Type : MCQ Option Shuffling : Yes Display Question Number : Yes
Single Line Question Option : No Option Orientation : Vertical

Wrong Marks : 0

A is B's sister. C is B's mother. E is D's mother. Then how A is related to D?

Options :

1. Sister
2. Grand Mother
3. Daughter
4. Grand Daughter

Question Number : 51 Question Id : 6232178740 Question Type : MCQ Option Shuffling : Yes Display Question Number : Yes
Single Line Question Option : No Option Orientation : Vertical

Wrong Marks : 0

Arrange the given words in a meaningful sequence and choose an alternative.

- i) Site
- ii) Plan
- iii) Rent
- iv) Money
- v) Building
- vi) Construction

Options :

1. i, ii, iii, vi, v, iv
2. ii, iii, vi, v, i, iv
3. iii, iv, ii, vi, v, i
4. iv, i, ii, vi, v, iii

Question Number : 52 Question Id : 6232178741 Question Type : MCQ Option Shuffling : Yes Display Question Number : Yes
Single Line Question Option : No Option Orientation : Vertical

Wrong Marks : 0

Consider the statements “The hill is fiery. Because the hill is smoky. Whatever has fire has smoke”. In this statement, “The hill has smoke which is invariably associated with fire” is

Options :

1. Pratijna
2. Hetu
3. Udaharna
4. Upanaya

Question Number : 53 Question Id : 6232178742 Question Type : MCQ Option Shuffling : Yes Display Question Number : Yes
Single Line Question Option : No Option Orientation : Vertical

Wrong Marks : 0

Anumāna or inference is defined as

Options :

1. Instrument of judgment
2. Instrument of perception
3. Instrument of fact
4. Instrument of cause

Question Number : 54 Question Id : 6232178743 Question Type : MCQ Option Shuffling : Yes Display Question Number : Yes
Single Line Question Option : No Option Orientation : Vertical

Wrong Marks : 0

The science and study of pramanas is called

Options :

1. Nyaya

2. Advaita

3. Mimamsa

4. Vedanta

Question Number : 55 Question Id : 6232178744 Question Type : MCQ Option Shuffling : Yes Display Question Number : Yes
Single Line Question Option : No Option Orientation : Vertical

Wrong Marks : 0

Study the following tabular statement and answer the question below.

The proportion of male students and the proportion of girl students in a school are given in the following tabular statement. The school has a total of 1600 students and 80% of them are in secondary section and the rest are equally divided between the classes 11 and 12.

Class	Male	Girl
11	0.50	0.50
12	0.60	0.40
Secondary section	0.45	0.55

The number of girl students in the class 12 is

Options :

1. 32

2. 160

3. 64

4. 80

Question Number : 56 Question Id : 6232178745 Question Type : MCQ Option Shuffling : Yes Display Question Number : Yes
Single Line Question Option : No Option Orientation : Vertical

Wrong Marks : 0

Study the following tabular statement and answer the question below.

The proportion of male students and the proportion of girl students in a school are given in the following tabular statement. The school has a total of 1600 students and 80% of them are in secondary section and the rest are equally divided between the classes 11 and 12.

Class	Male	Girl
11	0.50	0.50
12	0.60	0.40
Secondary section	0.45	0.55

The total number of male students in the school is

Options :

1. 700
2. 650
3. 848
4. 752

Question Number : 57 Question Id : 6232178746 Question Type : MCQ Option Shuffling : Yes Display Question Number : Yes Single Line Question Option : No Option Orientation : Vertical

Wrong Marks : 0

Study the following tabular statement and answer the question below.

The proportion of male students and the proportion of girl students in a school are given in the following tabular statement. The school has a total of 1600 students and 80% of them are in secondary section and the rest are equally divided between the classes 11 and 12.

Class	Male	Girl
11	0.50	0.50
12	0.60	0.40
Secondary section	0.45	0.55

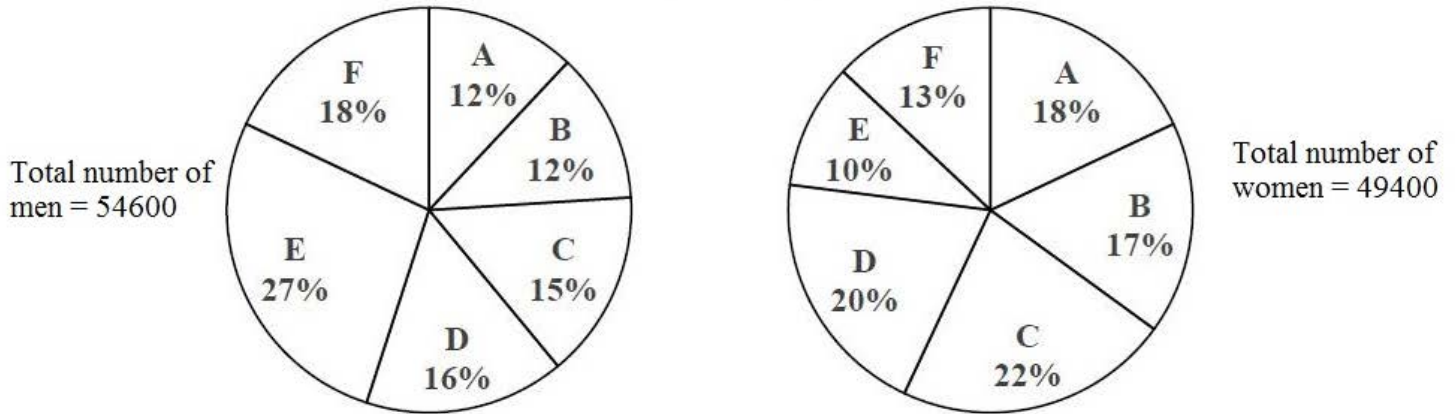
The percentage of male students in the secondary section

Options :

1. 36
2. 42
3. 45
4. 48

Question Number : 58 Question Id : 6232178747 Question Type : MCQ Option Shuffling : Yes Display Question Number : Yes
 Single Line Question Option : No Option Orientation : Vertical
 Wrong Marks : 0

The following pie chart shows the distribution of men and women in 6 different towns. Based on this information answer the question given below.



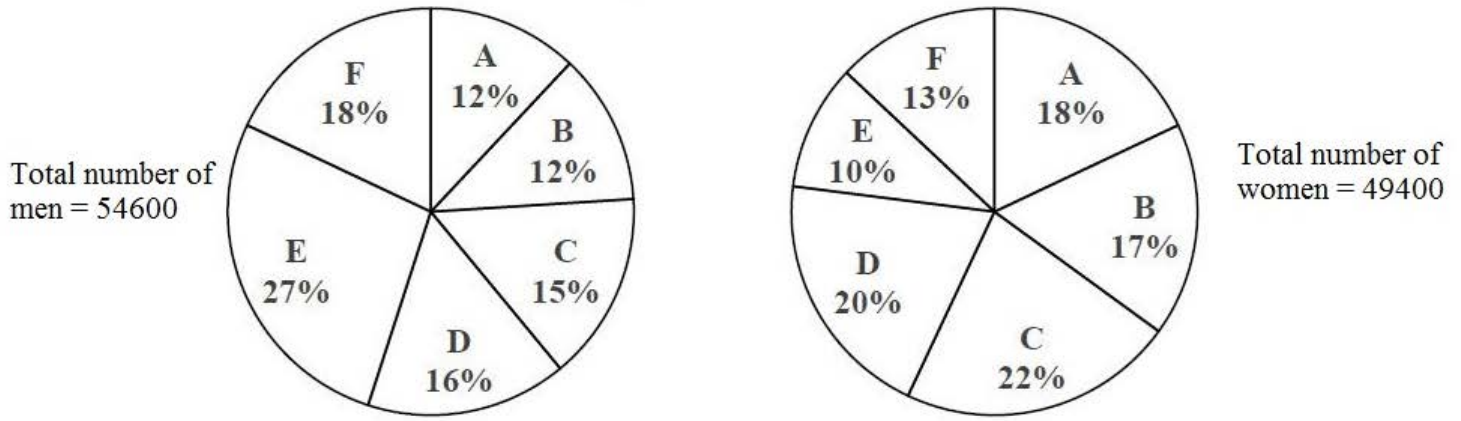
Total number of men and women in the town C is

Options :

1. 19000
2. 19058
3. 20463
4. 21252

Question Number : 59 Question Id : 6232178748 Question Type : MCQ Option Shuffling : Yes Display Question Number : Yes
 Single Line Question Option : No Option Orientation : Vertical
 Wrong Marks : 0

The following pie chart show the distribution of men and women in 6 different towns.
Based on this information answer the question given below.



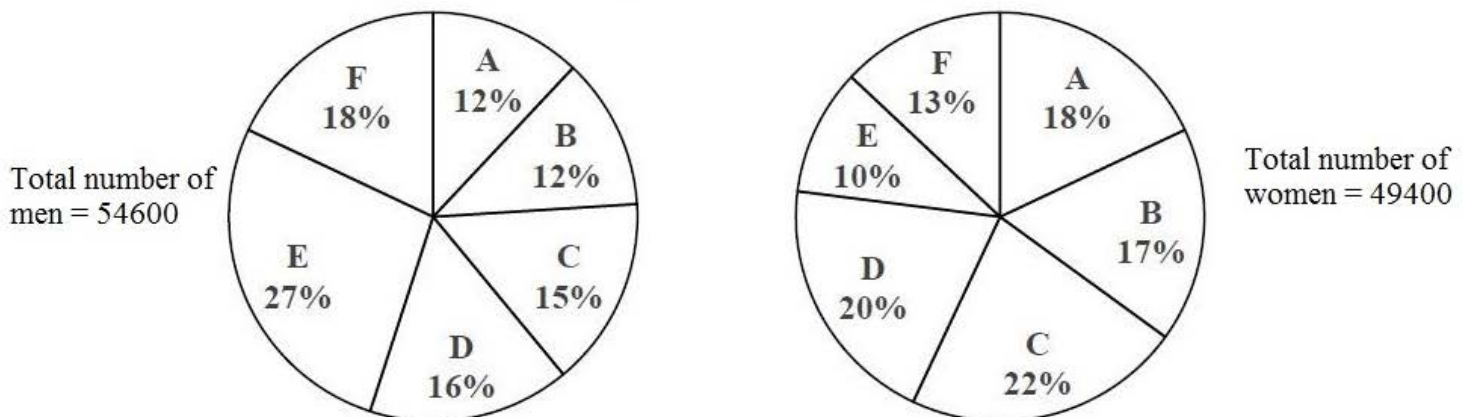
The ratio between the number of men and women in the town D is

Options :

1. 1092:1235
2. 348:177
3. 2:3
4. 12:13

Question Number : 60 Question Id : 6232178749 Question Type : MCQ Option Shuffling : Yes Display Question Number : Yes
Single Line Question Option : No Option Orientation : Vertical
Wrong Marks : 0

The following pie chart show the distribution of men and women in 6 different towns.
Based on this information answer the question given below.



The total number of women in the towns B, D and F is

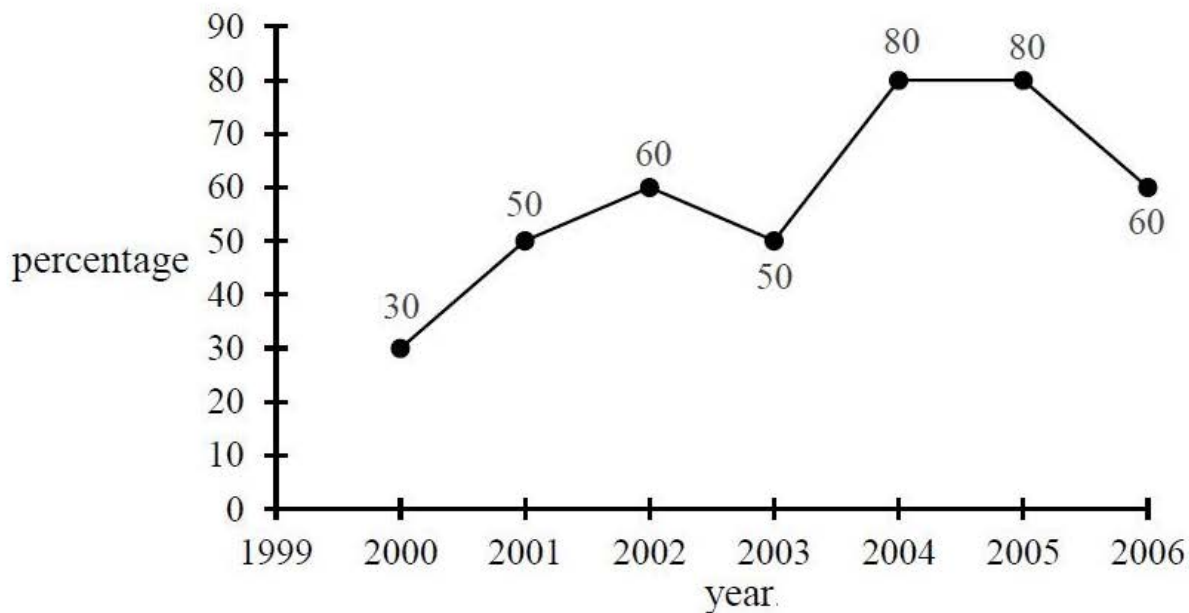
Options :

1. 24000
2. 24363
3. 24700
4. 29560

Question Number : 61 Question Id : 6232178750 Question Type : MCQ Option Shuffling : Yes Display Question Number : Yes Single Line Question Option : No Option Orientation : Vertical

Wrong Marks : 0

The following line graph represents the percentage of the number of qualified candidates in an examination out of the total number of candidates appeared in that examination for the corresponding year. Based on the information for the years 2000 to 2006, answer the question below.



If the number of qualified candidates in 2004 was 42400, then the number of candidates appeared for the examination in 2004 was

Options :

1. 50000
2. 53250

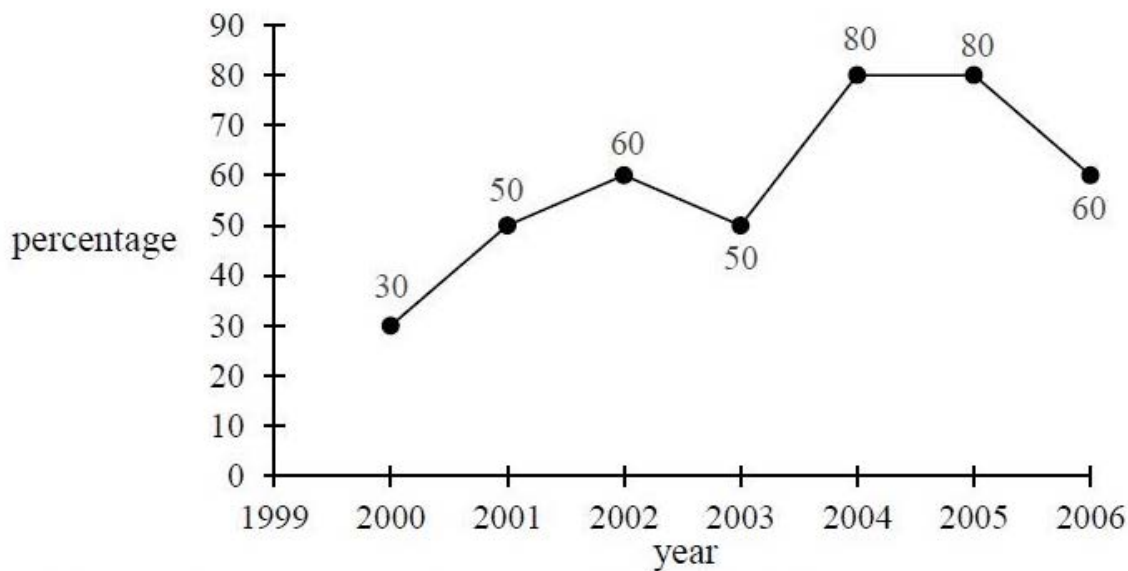
3. 53000

4. 48250

Question Number : 62 Question Id : 6232178751 Question Type : MCQ Option Shuffling : Yes Display Question Number : Yes
Single Line Question Option : No Option Orientation : Vertical

Wrong Marks : 0

The following line graph represents the percentage of the number of qualified candidates in an examination out of the total number of candidates appeared in that examination for the corresponding year. Based on the information for the years 2000 to 2006, answer the question below.



If the total number of qualified candidates in 2005 and 2006 together was 33500 and the number of candidates appeared in 2005 was 26500, then the number of candidates appeared for the examination in 2006 was

Options :

1. 20500

2. 20000

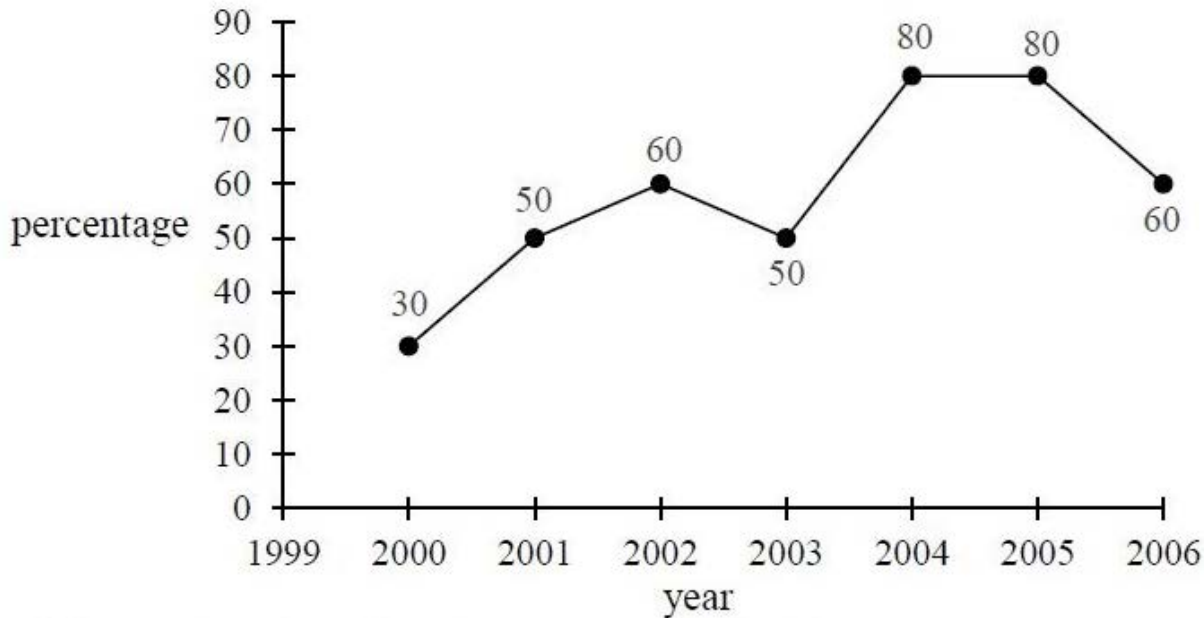
3. 22500

4. 24050

Question Number : 63 Question Id : 6232178752 Question Type : MCQ Option Shuffling : Yes Display Question Number : Yes
Single Line Question Option : No Option Orientation : Vertical

Wrong Marks : 0

The following line graph represents the percentage of the number of qualified candidates in an examination out of the total number of candidates appeared in that examination for the corresponding year. Based on the information for the years 2000 to 2006, answer the question below.



If the total number of candidates appeared for the years 2001 and 2003 put together was 20000 and the number of qualified candidates in 2001 was 7550, then the number of qualified candidates in 2003 was

Options :

1. 2400
2. 2450
3. 4900
4. 7550

Sub-Section Number: 5
Sub-Section Id: 623217293
Question Shuffling Allowed : Yes

Question Number : 64 Question Id : 6232178753 Question Type : MCQ Option Shuffling : Yes Display Question Number : Yes
Single Line Question Option : No Option Orientation : Vertical

Wrong Marks : 0

The full form of USB

Options :

1. University Security Block
2. United Serial Bus
3. Universal Serial Bus
4. Ultra Security Block

Question Number : 65 Question Id : 6232178754 Question Type : MCQ Option Shuffling : Yes Display Question Number : Yes
Single Line Question Option : No Option Orientation : Vertical

Wrong Marks : 0

An unsolicited e-mail message sent to many recipients at once is a

Options :

1. Worm
2. Virus
3. Threat
4. Spam

Question Number : 66 Question Id : 6232178755 Question Type : MCQ Option Shuffling : Yes Display Question Number : Yes
Single Line Question Option : No Option Orientation : Vertical

Wrong Marks : 0

The full form of MOOC is

Options :

1. Massive Open Online Course

2. Massive Online Open Course

3. Massive Original Online Course

4. Massive Oriented Online Course

Question Number : 67 Question Id : 6232178756 Question Type : MCQ Option Shuffling : Yes Display Question Number : Yes
Single Line Question Option : No Option Orientation : Vertical
Wrong Marks : 0

TCP/IP is necessary if one is to connect to the

Options :

1. Phone lines

2. LAN

3. Internet

4. Server

Question Number : 68 Question Id : 6232178757 Question Type : MCQ Option Shuffling : Yes Display Question Number : Yes
Single Line Question Option : No Option Orientation : Vertical
Wrong Marks : 0

“SWAYAM” platform is developed by

Options :

1. MHRD with the help of Microsoft

2. AICTE with the help of Microsoft

3. MHRD and AICTE with the help of Microsoft

4. UGC with the help of Microsoft

Question Number : 69 Question Id : 6232178758 Question Type : MCQ Option Shuffling : Yes Display Question Number : Yes
Single Line Question Option : No Option Orientation : Vertical

Wrong Marks : 0

The digital repository of Indian Electronic Theses and Dissertations “Shodhganga” set up by

Options :

1. INFLIBNET Centre

2. NPTEL

3. UGC

4. AICTE

Question Number : 70 Question Id : 6232178759 Question Type : MCQ Option Shuffling : Yes Display Question Number : Yes
Single Line Question Option : No Option Orientation : Vertical

Wrong Marks : 0

The following is not the benefit of ICT Governance.

Options :

1. Increase transparency

2. Higher availability of public domain information

3. Increase efficiency due to connectivity

4. Reduce security of information

Question Number : 71 Question Id : 6232178760 Question Type : MCQ Option Shuffling : Yes Display Question Number : Yes
Single Line Question Option : No Option Orientation : Vertical

Wrong Marks : 0

Which of the following enable one to send the same letter to different persons in MSWORD

Options :

1. Mail join

2. Mail copy

3. Mail insert

4. Mail merge

Question Number : 72 Question Id : 6232178761 Question Type : MCQ Option Shuffling : Yes Display Question Number : Yes
Single Line Question Option : No Option Orientation : Vertical

Wrong Marks : 0

Which of the following is not a/an image/graphic format?

Options :

1. PNG

2. GIF

3. BMP

4. GUI

Question Number : 73 Question Id : 6232178762 Question Type : MCQ Option Shuffling : Yes Display Question Number : Yes
Single Line Question Option : No Option Orientation : Vertical

Wrong Marks : 0

Which of the following statements is related to sustainability

Options :

1. It refers to a process or state that can be maintained indefinitely.
2. Natural resources must be used in ways that create ecological debts.
3. Consumption of the total natural capital stock.
4. None of the other options

Question Number : 74 Question Id : 6232178763 Question Type : MCQ Option Shuffling : Yes Display Question Number : Yes
Single Line Question Option : No Option Orientation : Vertical

Wrong Marks : 0

Contaminated substances which leak into ground and carried by filtration into ground water is known as

Options :

1. Air pollution
2. Water pollution
3. Noise pollution
4. Land contamination

Question Number : 75 Question Id : 6232178764 Question Type : MCQ Option Shuffling : Yes Display Question Number : Yes
Single Line Question Option : No Option Orientation : Vertical

Wrong Marks : 0

When was the problem of ozone depletion first identified?

Options :

1. 1970
2. 1971

1972

3.

1973

4.

Question Number : 76 Question Id : 6232178765 Question Type : MCQ Option Shuffling : Yes Display Question Number : Yes
Single Line Question Option : No Option Orientation : Vertical

Wrong Marks : 0

Why is the runoff from fertilized agricultural fields, even if free of pesticides, often harmful to the ecosystems of temperate lakes?

Options :

The fertilizer promotes the growth of fish to the point where they cannot find enough food to eat.

1.

The runoff causes a surface algal bloom, which reduces the penetration of light into the water reducing photosynthesis and thereby which reducing the amount of oxygen in the water.

2.

Fertilizer runoff promotes antibiotic resistance

3.

The runoff raises the levels of inorganic nutrients in the surface waters to levels that are toxic for algae and other lake organisms.

4.

Question Number : 77 Question Id : 6232178766 Question Type : MCQ Option Shuffling : Yes Display Question Number : Yes
Single Line Question Option : No Option Orientation : Vertical

Wrong Marks : 0

Sulphur - rich fossil fuels _____.

Options :

Cause less harm to the environment than other fossil fuels

1.

Contribute to global cooling

2.

3. Deplete the ozone layer

4. Contribute to acid rain

Question Number : 78 Question Id : 6232178767 Question Type : MCQ Option Shuffling : Yes Display Question Number : Yes
Single Line Question Option : No Option Orientation : Vertical

Wrong Marks : 0

The most nuclear fuel used in the world is _____.

Options :

1. Thorium-232

2. Uranium-238

3. Uranium-235

4. Plutonium-239

Question Number : 79 Question Id : 6232178768 Question Type : MCQ Option Shuffling : Yes Display Question Number : Yes
Single Line Question Option : No Option Orientation : Vertical

Wrong Marks : 0

Boiling water reactor and pressurised water reactors are

Options :

1. Solar reactor

2. OTEC

3. Biogas reactor

4. Nuclear reactor

Question Number : 80 Question Id : 6232178769 Question Type : MCQ Option Shuffling : Yes Display Question Number : Yes
Single Line Question Option : No Option Orientation : Vertical

Wrong Marks : 0

Which is known as seismic wave?

Options :

1. Tsunami
2. Hurricane
3. Typhoon
4. El Nino

Question Number : 81 Question Id : 6232178770 Question Type : MCQ Option Shuffling : Yes Display Question Number : Yes
Single Line Question Option : No Option Orientation : Vertical

Wrong Marks : 0

With minor exception, which of the following has been phased out completely globally?

Options :

1. Carbon dioxide
2. Carbon monoxide
3. Chlorofluorocarbons
4. Nitrogen dioxide

Question Number : 82 Question Id : 6232178771 Question Type : MCQ Option Shuffling : Yes Display Question Number : Yes
Single Line Question Option : No Option Orientation : Vertical

Wrong Marks : 0

In which medium were instructions given in the Buddhist system of education.

Options :

1. Sanskrit

2. Hindi

3. Pali

4. None of the other options

Question Number : 83 Question Id : 6232178772 Question Type : MCQ Option Shuffling : Yes Display Question Number : Yes
Single Line Question Option : No Option Orientation : Vertical

Wrong Marks : 0

Prime Minister Research Fellowship is for students pursuing Ph.D programme in _____ organization.

Options :

1. State and Central universities

2. Central Universities, IISc, IITs, NITs

3. IISc, IITs, NITs, IISERS, IITs, State and Central Universities

4. IITs and IISC

Question Number : 84 Question Id : 6232178773 Question Type : MCQ Option Shuffling : Yes Display Question Number : Yes
Single Line Question Option : No Option Orientation : Vertical

Wrong Marks : 0

The University Grants Commission was established with which of the following aims?

a) Promotion of research and development in higher education

b) Identifying and sustaining institutions of potential learning

c) Capacity building of teachers

d) Providing autonomy to each and every higher educational institutions in India

Options :

1. (a), (b), (c) and (d)

2. (a), (b), (c)

3. (b), (c), (d)

4. (a), (b), (d)

Question Number : 85 Question Id : 6232178774 Question Type : MCQ Option Shuffling : Yes Display Question Number : Yes
Single Line Question Option : No Option Orientation : Vertical
Wrong Marks : 0

The first Open University in India was set up in the state of

Options :

1. Andhra Pradesh

2. Delhi

3. Tamil Nadu

4. Kerala

Question Number : 86 Question Id : 6232178775 Question Type : MCQ Option Shuffling : Yes Display Question Number : Yes
Single Line Question Option : No Option Orientation : Vertical
Wrong Marks : 0

The study of interaction between living and non-living organisms and environment is called

Options :

1. Ecosystem

2. Ecology

3. Phytogeography

4. Phytosociology

Question Number : 87 Question Id : 6232178776 Question Type : MCQ Option Shuffling : Yes Display Question Number : Yes
Single Line Question Option : No Option Orientation : Vertical

Wrong Marks : 0

Kothari Commission report was submitted to the Government in the year

Options :

1. 1960

2. 1966

3. 1968

4. 1970

Question Number : 88 Question Id : 6232178777 Question Type : MCQ Option Shuffling : Yes Display Question Number : Yes
Single Line Question Option : No Option Orientation : Vertical

Wrong Marks : 0

Common Wealth of learning focussed on promoting

Options :

1. economic development by providing education and teaching skills.

2. knowledge

3. personality development

communication skills.

4.

Question Number : 89 Question Id : 6232178778 Question Type : MCQ Option Shuffling : Yes Display Question Number : Yes
Single Line Question Option : No Option Orientation : Vertical

Wrong Marks : 0

Under CBCS, which of the following is not regarded as a “programme”?

Options :

Certificate

1.

Diploma

2.

Degree

3.

None of the other options

4.

Question Number : 90 Question Id : 6232178779 Question Type : MCQ Option Shuffling : Yes Display Question Number : Yes
Single Line Question Option : No Option Orientation : Vertical

Wrong Marks : 0

Extension of inference is called

Options :

Observation

1.

Conclusions

2.

Analysis

3.

Hypothesis

4.

Section Number :	2
Section type :	Online
Mandatory or Optional:	Mandatory
Number of Questions:	90
Number of Questions to be attempted:	90
Section Marks:	90
Display Number Panel:	Yes
Group All Questions:	No

Sub-Section Number:	1
Sub-Section Id:	623217294
Question Shuffling Allowed :	Yes

Question Number : 91 Question Id : 6232178780 Question Type : MCQ Option Shuffling : Yes Display Question Number : Yes
Single Line Question Option : No Option Orientation : Vertical

Wrong Marks : 0

Ethno linguistics

Options :

1. studies how languages are used in actual speech and cognition
2. deals with the description of languages
3. deals with origin and development of languages
4. deals with grammar of the particular language

Question Number : 92 Question Id : 6232178781 Question Type : MCQ Option Shuffling : Yes Display Question Number : Yes
Single Line Question Option : No Option Orientation : Vertical

Wrong Marks : 0

The study of the biology and behaviour of prosimians, monkeys and apes

Options :

1. Paleoanthropology
2. Primatology
3. Genetics
4. Osteology

Question Number : 93 Question Id : 6232178782 Question Type : MCQ Option Shuffling : Yes Display Question Number : Yes
Single Line Question Option : No Option Orientation : Vertical

Wrong Marks : 0

Who among the following is interested in individual as an individual?

Options :

1. Anthropologist
2. Psychologist
3. Sociologist
4. Economist

Question Number : 94 Question Id : 6232178783 Question Type : MCQ Option Shuffling : Yes Display Question Number : Yes
Single Line Question Option : No Option Orientation : Vertical

Wrong Marks : 0

The first humans (genus homo) to have a prominent chin

Options :

1. Neanderthal
2. Homoerectus
3. Homo sapiens
4. Cro-Magnon

Question Number : 95 Question Id : 6232178784 Question Type : MCQ Option Shuffling : Yes Display Question Number : Yes
Single Line Question Option : No Option Orientation : Vertical

Wrong Marks : 0

How many number of bar bodies is present in female having Turner's syndrome

Options :

1. 2
2. 3

3. 0

4. 1

Question Number : 96 Question Id : 6232178785 Question Type : MCQ Option Shuffling : Yes Display Question Number : Yes
Single Line Question Option : No Option Orientation : Vertical

Wrong Marks : 0

Polymorphism in a population arises due to

Options :

1. Superiority of heterozygosity

2. Frequency independent selection

3. Genetic drift

4. Abnormal gene

Question Number : 97 Question Id : 6232178786 Question Type : MCQ Option Shuffling : Yes Display Question Number : Yes
Single Line Question Option : No Option Orientation : Vertical

Wrong Marks : 0

Which of the following has short and flat nasal bone

Options :

1. Man

2. Gorilla

3. Orang-utan

4. Chimpanzee

Question Number : 98 Question Id : 6232178787 Question Type : MCQ Option Shuffling : Yes Display Question Number : Yes
Single Line Question Option : No Option Orientation : Vertical

Wrong Marks : 0

Which of the following statements are true

- I. In 1934 Lewis describe Ramapithecus as a hominid
- II. Propliopithecus is the ancestor of Gibbon
- III. Dryopithecus fossil primate was discovered from Siwalik hills

Options :

- 1. Only I
- 2. II and III
- 3. I and III
- 4. I, II and III

Question Number : 99 Question Id : 6232178788 Question Type : MCQ Option Shuffling : Yes Display Question Number : Yes
Single Line Question Option : No Option Orientation : Vertical

Wrong Marks : 0

Which of the following is not correct about Zinjanthropus

- I. Is better known as Able man
- II. The earliest known man to make tools
- III. The dental series is irregular with premaxillarydiastema
- IV. Cranial capacity is below 650cc

Options :

- 1. Only I
- 2. I, II and III
- 3. II , III and IV

4. Only IV

Question Number : 100 Question Id : 6232178789 Question Type : MCQ Option Shuffling : Yes Display Question Number : Yes
Single Line Question Option : No Option Orientation : Vertical
Wrong Marks : 0

Who is the ancestor of Catarrhine monkey

Options :

1. Propiopyithecus

2. Parapithecus

3. Kenyapithecus

4. None of the other options

Question Number : 101 Question Id : 6232178790 Question Type : MCQ Option Shuffling : Yes Display Question Number : Yes
Single Line Question Option : No Option Orientation : Vertical
Wrong Marks : 0

The skeleton of 'Aegyptopithecus' is similar to which of the following

Options :

1. Spider monkey

2. Proboscis monkey

3. Howler monkey

4. None of the other options

Question Number : 102 Question Id : 6232178791 Question Type : MCQ Option Shuffling : Yes Display Question Number : Yes
Single Line Question Option : No Option Orientation : Vertical
Wrong Marks : 0

Which of the following is a Sex linked recessive disease

Options :

1. Neurofibromatosis
2. Duchenne Muscular Dystrophy
3. Huntington disease
4. None of the above

Question Number : 103 Question Id : 6232178792 Question Type : MCQ Option Shuffling : Yes Display Question Number : Yes
Single Line Question Option : No Option Orientation : Vertical
Wrong Marks : 0

Cro-magnon Man differed from Homo erectus man in

Options :

1. Large jaw
2. Omnivorous
3. Small jaw
4. Making tools

Question Number : 104 Question Id : 6232178793 Question Type : MCQ Option Shuffling : Yes Display Question Number : Yes
Single Line Question Option : No Option Orientation : Vertical
Wrong Marks : 0

Anonychia is a rare congenital disorder characterised by Nail Dystrophy is caused due to

Options :

1. Mutation in chromosome 6p24
2. Mutation in chromosome 1p13
3. Mutation in chromosome 17q12

4. Mutation in Chromosome 20p1

Question Number : 105 Question Id : 6232178794 Question Type : MCQ Option Shuffling : Yes Display Question Number : Yes
Single Line Question Option : No Option Orientation : Vertical

Wrong Marks : 0

Match the following

- | | |
|----------------|--------------------------------------|
| a. F. Galton | 1. Finger Print |
| b. Dobzhansky | 2. Genetic and the Origin of Species |
| c. W.C. Boyd | 3. Genetics and the Races of Man |
| d. C.O. Carter | 4. Human Heredity |

Options :

1. a-1 b-2 c-3 d-4

2. a-4 b-1 c-2 d-3

3. a-1 b-3 c-4 d-2

4. a-4 b-3 c-2 d-1

Question Number : 106 Question Id : 6232178795 Question Type : MCQ Option Shuffling : Yes Display Question Number : Yes
Single Line Question Option : No Option Orientation : Vertical

Wrong Marks : 0

Match the following

- | | |
|-------------|-------------|
| a. Zygion | 1. Forehead |
| b. Trichion | 2. Lips |
| c. Chelion | 3. Maxilla |
| d. Gonion | 4. Mandible |

Options :

1. a-1 b-2 c-3 d-4

2. a-3 b-1 c-2 d-4

3. a-3 b-2 c-1 d-4

4. a-1 b-3 c-4 d-2

Question Number : 107 Question Id : 6232178796 Question Type : MCQ Option Shuffling : Yes Display Question Number : Yes
Single Line Question Option : No Option Orientation : Vertical
Wrong Marks : 0

Match the following

a. Single point Mutation

b. Inversion mutation

c. Point deletion

d. Multifactorial disorder

1. Cystic fibrosis

2. haemophilia

3. Sickle cell anaemia

4. Diabetes

Options :

1. a-1 b-2 c-3 d-4

2. a-3 b-1 c-2 d-4

3. a-3 b-2 c-1 d-4

4. a-1 b-3 c-4 d-2

Question Number : 108 Question Id : 6232178797 Question Type : MCQ Option Shuffling : Yes Display Question Number : Yes
Single Line Question Option : No Option Orientation : Vertical
Wrong Marks : 0

Microliths tools were first discovered by

Options :

1. Carlyle

2. Dart

3. Lubbock

4. Bruce

Question Number : 109 Question Id : 6232178798 Question Type : MCQ Option Shuffling : Yes Display Question Number : Yes
Single Line Question Option : No Option Orientation : Vertical
Wrong Marks : 0

Painted pebbles were the peculiarity of which culture

Options :

1. Maglemoisan

2. Austurian

3. Gravetian

4. Azilian

Question Number : 110 Question Id : 6232178799 Question Type : MCQ Option Shuffling : Yes Display Question Number : Yes
Single Line Question Option : No Option Orientation : Vertical
Wrong Marks : 0

The cave paintings of Altamira were first discovered by

Options :

1. E.A. Hooton

2. A.E. Garrod

3. M.S. Sautuola

R.B. Foote

4.

Question Number : 111 Question Id : 6232178800 Question Type : MCQ Option Shuffling : Yes Display Question Number : Yes
Single Line Question Option : No Option Orientation : Vertical

Wrong Marks : 0

The concept of Unity and Extension was developed by

Options :

1. Opler and R.D Singh

2. Mackim Marriot and Opler

3. Milton Singer and Mckim Marriot

4. Robert Redfield and Milton Singer

Question Number : 112 Question Id : 6232178801 Question Type : MCQ Option Shuffling : Yes Display Question Number : Yes
Single Line Question Option : No Option Orientation : Vertical

Wrong Marks : 0

The largest Harappan Civilization site is

Options :

1. Lothal

2. Kalibangan

3. Rakhigarhi

4. Bhirrana

Question Number : 113 Question Id : 6232178802 Question Type : MCQ Option Shuffling : Yes Display Question Number : Yes
Single Line Question Option : No Option Orientation : Vertical

Wrong Marks : 0

In economic anthropology concept of Reciprocity and substantivism was given by

Options :

1. Max Weber
2. Marcel Mauss
3. Karl Marx
4. Karl Polanyi

Question Number : 114 Question Id : 6232178803 Question Type : MCQ Option Shuffling : Yes Display Question Number : Yes
Single Line Question Option : No Option Orientation : Vertical
Wrong Marks : 0

Which is the oldest agricultural settlement site in South Asia

Options :

1. Inamgaon
2. Burzahom
3. Mehrgarh
4. Chirand

Question Number : 115 Question Id : 6232178804 Question Type : MCQ Option Shuffling : Yes Display Question Number : Yes
Single Line Question Option : No Option Orientation : Vertical
Wrong Marks : 0

Who is the author of book entitled “Totemism and Exogamy”

Options :

1. McLennan
2. R.R. Marret
3. J.J. Bachofen

J.G. Frazer

4.

Question Number : 116 Question Id : 6232178805 Question Type : MCQ Option Shuffling : Yes Display Question Number : Yes
Single Line Question Option : No Option Orientation : Vertical

Wrong Marks : 0

Which of the following is not correct about Indus Valley Civilization

- I. Indus Civilization was geographically largest than the Mesopotamian and Egyptian Civilization.
- II. The cities were well planned with wall fortification
- III. There was elaborate drainage system
- IV. Non standardized weights were used

Options :

I only

1.

II and III

2.

III only

3.

IV only

4.

Question Number : 117 Question Id : 6232178806 Question Type : MCQ Option Shuffling : Yes Display Question Number : Yes
Single Line Question Option : No Option Orientation : Vertical

Wrong Marks : 0

The earliest occurrence of iron has been reported at Noah by which culture

- I. Ochre Coloured Pottery Culture.
- II. Black-and- Red Ware Culture
- III. Painted Grey ware Culture.
- IV. Northern Black Polished ware Culture.

Options :

I Only

1.

2. II Only

3. III and IV

4. IV Only

Question Number : 118 Question Id : 6232178807 Question Type : MCQ Option Shuffling : Yes Display Question Number : Yes
Single Line Question Option : No Option Orientation : Vertical

Wrong Marks : 0

Match the following

a. Morgan

a. Tylor

b. Riskey

c. Robert H. Lowie

1. History of Ethnological Theory

2. Tribes and Caste of Bengal

3. Primitive Culture

4. The threshold of religion

Options :

1. a-1 b-2 c-3 d-4

2. a-4 b-1 c-2 d-3

3. a-1 b-3 c-4 d-2

4. a-4 b-3 c-2 d-1

Question Number : 119 Question Id : 6232178808 Question Type : MCQ Option Shuffling : Yes Display Question Number : Yes
Single Line Question Option : No Option Orientation : Vertical

Wrong Marks : 0

Match the following

- a. Sahariya Tribe
- b. Boro Tribe
- c. Thoti
- d. Mundari

- 1. Andhra Pradesh
- 2. Madhya Pradesh
- 3. Meghalaya
- 4. Orissa

Options :

- 1. a-1 b-2 c-3 d-4
- 2. a-2 b-3 c-1 d-4
- 3. a-1 b-3 c-4 d-2
- 4. a-1 b-4 c-2 d-3

Question Number : 120 Question Id : 6232178809 Question Type : MCQ Option Shuffling : Yes Display Question Number : Yes
Single Line Question Option : No Option Orientation : Vertical

Wrong Marks : 0

Archaeological Anthropology traces the origin and growth of culture in the past. By past it means

Options :

- 1. The period before history
- 2. The period before sociology
- 3. The period before economics
- 4. The period before linguistics.

Question Number : 121 Question Id : 6232178810 Question Type : MCQ Option Shuffling : Yes Display Question Number : Yes
Single Line Question Option : No Option Orientation : Vertical

Wrong Marks : 0

One of the regions of the old world

Options :

1. Australia
2. Afro Eurasia
3. Greenland
4. Iceland

Question Number : 122 Question Id : 6232178811 Question Type : MCQ Option Shuffling : Yes Display Question Number : Yes
Single Line Question Option : No Option Orientation : Vertical

Wrong Marks : 0

Who initially developed the three age systems?

Options :

1. John Lubbock
2. C.J. Thomsen
3. Childe. V. Gordon
4. Westropp H.M.

Question Number : 123 Question Id : 6232178812 Question Type : MCQ Option Shuffling : Yes Display Question Number : Yes
Single Line Question Option : No Option Orientation : Vertical

Wrong Marks : 0

The middle Palaeolithic period is sometimes called as

Options :

1. Acheulan
2. Lehringen
3. Mousterian

Archaic

4.

Question Number : 124 Question Id : 6232178813 Question Type : MCQ Option Shuffling : Yes Display Question Number : Yes
Single Line Question Option : No Option Orientation : Vertical

Wrong Marks : 0

Which dating technique is based on the patterns of tree-ring growth?

Options :

1. Radiocarbon dating
2. Fission- track dating
3. Palaeomagnetic dating
4. Dendrochronology

Question Number : 125 Question Id : 6232178814 Question Type : MCQ Option Shuffling : Yes Display Question Number : Yes
Single Line Question Option : No Option Orientation : Vertical

Wrong Marks : 0

The fixation technique in museum was further developed by

Options :

1. Kaiserling
2. Aiyyappan
3. Ehrentiels
4. Balaratnam

Question Number : 126 Question Id : 6232178815 Question Type : MCQ Option Shuffling : Yes Display Question Number : Yes
Single Line Question Option : No Option Orientation : Vertical

Wrong Marks : 0

Protohistory is a period between

Options :

1. Ethnohistory and History
2. Prehistory and History
3. Evolution and History
4. Prehistory and Protohistory.

Question Number : 127 Question Id : 6232178816 Question Type : MCQ Option Shuffling : Yes Display Question Number : Yes
Single Line Question Option : No Option Orientation : Vertical

Wrong Marks : 0

The first known writing system is called

Options :

1. Hieroglyphs
2. Petroglyphs
3. Cuneiform
4. Stone tablets

Question Number : 128 Question Id : 6232178817 Question Type : MCQ Option Shuffling : Yes Display Question Number : Yes
Single Line Question Option : No Option Orientation : Vertical

Wrong Marks : 0

The longest stone age period

Options :

1. Mesolithic
2. Neolithic
3. Microlithic

Palaeolithic

4.

Question Number : 129 Question Id : 6232178818 Question Type : MCQ Option Shuffling : Yes Display Question Number : Yes
Single Line Question Option : No Option Orientation : Vertical

Wrong Marks : 0

The oldest evidence of pottery manufacture has been found in

Options :

1. Odai Yamamoto
2. Keezhadi
3. Adichanallur
4. Adirampakkam

Question Number : 130 Question Id : 6232178819 Question Type : MCQ Option Shuffling : Yes Display Question Number : Yes
Single Line Question Option : No Option Orientation : Vertical

Wrong Marks : 0

Many of the nineteenth century ethnological museums arranged their exhibits in the following order

Options :

1. Evolution
2. Composition
3. Holistic
4. Ethnic

Question Number : 131 Question Id : 6232178820 Question Type : MCQ Option Shuffling : Yes Display Question Number : Yes
Single Line Question Option : No Option Orientation : Vertical

Wrong Marks : 0

Museum of Man - Indira Gandhi Rashtriya Manav Sangralaya is situated in

Options :

1. Kolkata

2. Bhopal

3. Delhi

4. Chennai

Question Number : 132 Question Id : 6232178821 Question Type : MCQ Option Shuffling : Yes Display Question Number : Yes
Single Line Question Option : No Option Orientation : Vertical

Wrong Marks : 0

The nature of Indian society is

Options :

1. Egalitarian

2. Totalitarian

3. Theocratic

4. Hierarchical

Question Number : 133 Question Id : 6232178822 Question Type : MCQ Option Shuffling : Yes Display Question Number : Yes
Single Line Question Option : No Option Orientation : Vertical

Wrong Marks : 0

“Peasants means small agricultural producer who with the help of simple equipment and the labour of their families produce mostly for their own consumption direct or indirect and for the fulfilment of obligation to holders of political and economic power” -This definition is given by

Options :

1. Eric Wolf

2. Robert Redfield

3. Teodor Shanin

4. A. L. Krober

Question Number : 134 Question Id : 6232178823 Question Type : MCQ Option Shuffling : Yes Display Question Number : Yes
Single Line Question Option : No Option Orientation : Vertical

Wrong Marks : 0

The book 'Peasant Wars of the Twentieth Century' was written by

Options :

1. Teodar Shanin

2. Eric Wolf

3. George Dalton

4. Marc Edelman

Question Number : 135 Question Id : 6232178824 Question Type : MCQ Option Shuffling : Yes Display Question Number : Yes
Single Line Question Option : No Option Orientation : Vertical

Wrong Marks : 0

Who said "as the peasant society is a half-society, so the peasant culture is half a culture"

Options :

1. Oscar Lewis

2. M.N. Srinivas

3. Robert Redfield

4. Eric Wolf

Question Number : 136 Question Id : 6232178825 Question Type : MCQ Option Shuffling : Yes Display Question Number : Yes
Single Line Question Option : No Option Orientation : Vertical

Wrong Marks : 0

Who said that Indian village was always a part of a wider entity subject to the winds
which flew from without

Options :

1. M.N. Srinivas
2. Kathleen Gough
3. S. C. Dube
4. Andre' Beteille

Question Number : 137 Question Id : 6232178826 Question Type : MCQ Option Shuffling : Yes Display Question Number : Yes
Single Line Question Option : No Option Orientation : Vertical

Wrong Marks : 0

Who was the first one to introduce the term 'jajmani system' in the anthropological and sociological writings?

Options :

1. Harold Gould
2. William H. Wiser
3. Beidelman
4. M.S.A. Rao

Question Number : 138 Question Id : 6232178827 Question Type : MCQ Option Shuffling : Yes Display Question Number : Yes
Single Line Question Option : No Option Orientation : Vertical

Wrong Marks : 0

Who among the following is the critic of the concept of rural-urban continuum?

Options :

1. Pocock
2. M.S.A. Rao
3. R. K. Mukherjee

Robert Redfield

4.

Question Number : 139 Question Id : 6232178828 Question Type : MCQ Option Shuffling : Yes Display Question Number : Yes
Single Line Question Option : No Option Orientation : Vertical

Wrong Marks : 0

Who among the following is a particularly vulnerable tribal community in Kerala?

Options :

1. Toda

2. Kota

3. Cholanaikkans

4. Malayali

Question Number : 140 Question Id : 6232178829 Question Type : MCQ Option Shuffling : Yes Display Question Number : Yes
Single Line Question Option : No Option Orientation : Vertical

Wrong Marks : 0

What is the most populous tribal group in Kerala?

Options :

1. Ulladan

2. Paniyans

3. Kurichiyans

4. MalaiArayans

Question Number : 141 Question Id : 6232178830 Question Type : MCQ Option Shuffling : Yes Display Question Number : Yes
Single Line Question Option : No Option Orientation : Vertical

Wrong Marks : 0

Who made a detailed study on the practice of a mother- right among the Kadar?

Options :

1. Aiyappan. A

2. Mattur. P.R.G.

3. S. Nandi

4. Ehrenfels

Question Number : 142 Question Id : 6232178831 Question Type : MCQ Option Shuffling : Yes Display Question Number : Yes
Single Line Question Option : No Option Orientation : Vertical

Wrong Marks : 0

Who argued that 'tribe' remains as a separate independent entity not enclosed under any particular region.

Options :

1. Verrier Elwin

2. G.S. Ghurye

3. Risely

4. Hutton

Question Number : 143 Question Id : 6232178832 Question Type : MCQ Option Shuffling : Yes Display Question Number : Yes
Single Line Question Option : No Option Orientation : Vertical

Wrong Marks : 0

Find out the correct match

Options :

1. Andhra Pradesh - Boya

2. Arunachal Pradesh - Jogi

3. Assam - Donga Korchas

4. Bihar - Dandasis

Question Number : 144 Question Id : 6232178833 Question Type : MCQ Option Shuffling : Yes Display Question Number : Yes
Single Line Question Option : No Option Orientation : Vertical

Wrong Marks : 0

The language of the tribes of Chotanagpur belong to the

Options :

1. Austric family
2. Dravidian
3. Tibeto Chinese
4. Indo-European.

Question Number : 145 Question Id : 6232178834 Question Type : MCQ Option Shuffling : Yes Display Question Number : Yes
Single Line Question Option : No Option Orientation : Vertical

Wrong Marks : 0

When was the first organised field work was conducted in Anthropology

Options :

1. 1898-99
2. 1913-18
3. 1906-08
4. 1928

Question Number : 146 Question Id : 6232178835 Question Type : MCQ Option Shuffling : Yes Display Question Number : Yes
Single Line Question Option : No Option Orientation : Vertical

Wrong Marks : 0

Which of the following sequences of ashrama dharmas in descending order is correct?

Options :

1. Brhahmachariya, grihastha, vanaprastha, sanyasa
2. Sanyasa, vanaprasha, grahastha, brahmachariya

3. Sanyasa, vanaprastha, brahmachariya, grahastha

4. Brahmachariya, grahastha, sanyasa, vanaprastha

Question Number : 147 Question Id : 6232178836 Question Type : MCQ Option Shuffling : Yes Display Question Number : Yes
Single Line Question Option : No Option Orientation : Vertical

Wrong Marks : 0

Match the following:

- | | |
|---------------------|--|
| a. Evans- Pritchard | 1. African Political System |
| b. Edmund Leach | 2. Political System of High land Burma |
| c. Marc Swartz | 3. Political Anthropology |
| d. Radcliffe Brown | 4. Structure and Function in Primitive society |

Options :

1. a-1, b-2, c-3, d-4

2. a-2, b-3, c-4, d-1

3. a-3, b-4, c-1, d-2

4. a-4, b-3, c-2, d-3

Question Number : 148 Question Id : 6232178837 Question Type : MCQ Option Shuffling : Yes Display Question Number : Yes
Single Line Question Option : No Option Orientation : Vertical

Wrong Marks : 0

Caste is not a / an

Options :

1. Endogamous system

2. Hereditary system

3. Hierarchical system

4. Exogamous system

Question Number : 149 Question Id : 6232178838 Question Type : MCQ Option Shuffling : Yes Display Question Number : Yes
Single Line Question Option : No Option Orientation : Vertical
Wrong Marks : 0

Immediate response on exposure to cold environment involves _____

Options :

1. Vasoconstriction

2. vasodilation

3. Homestasis

4. Thermogenesis

Question Number : 150 Question Id : 6232178839 Question Type : MCQ Option Shuffling : Yes Display Question Number : Yes
Single Line Question Option : No Option Orientation : Vertical
Wrong Marks : 0

Match the following:

Movement

Motive

1. Santal movement

a. Agricultural

2. Munda Rebellion

b. Independence

3. Bodo movement

c. Separatist

4. Jharkhand movement

d. Economic

Options :

1. 1-a, 2-b, 3-c, 4-d.

2. 2-a, 3-b, 4-c, 1-d.

3. 3-b, 4-a, 1-c, 2-d.

4. 4-a, 1-b, 2-c, 3-d.

Question Number : 151 Question Id : 6232178840 Question Type : MCQ Option Shuffling : Yes Display Question Number : Yes
Single Line Question Option : No Option Orientation : Vertical

Wrong Marks : 0

Match the following:

List I

- a. Folk- Urban continuum
- b. Universalization and Parochialization
- c. Tribe- Caste continuum
- d. Dominant Caste

List II

- i) McKim Marriott
- ii) F. G. Bailey
- iii) Robert Redfield
- iv) M.N. Srinivas

Options :

1. a-i b-ii c-iii d-iv

2. a-iii b-i c-ii d-iv

3. a-iii b-i c-iv d-ii

4. a-ii b-i c-iii d-iv

Question Number : 152 Question Id : 6232178841 Question Type : MCQ Option Shuffling : Yes Display Question Number : Yes
Single Line Question Option : No Option Orientation : Vertical

Wrong Marks : 0

Belief system of living things and non living things are

Options :

1. Animism

2. Totemism

3. Animation

4. Naturalism

Question Number : 153 Question Id : 6232178842 Question Type : MCQ Option Shuffling : Yes Display Question Number : Yes
Single Line Question Option : No Option Orientation : Vertical

Wrong Marks : 0

Who said that 'every human society has some sort of territorial structure'?

Options :

1. Henry Maine

2. Lucy Mair

3. Evans Pritchard

4. Radcliffe- Brown

Question Number : 154 Question Id : 6232178843 Question Type : MCQ Option Shuffling : Yes Display Question Number : Yes
Single Line Question Option : No Option Orientation : Vertical

Wrong Marks : 0

Who is credited as the founding scholar of the study of Legal Anthropology?

Options :

1. B. Malinowski

2. E. A. Hoebel

3. Henry Maine

4. Evans Pritchard

Question Number : 155 Question Id : 6232178844 Question Type : MCQ Option Shuffling : Yes Display Question Number : Yes
Single Line Question Option : No Option Orientation : Vertical

Wrong Marks : 0

According to Bohannan (1959) the Tiv's (Nigeria) economy is termed as

Options :

1. Reciprocal economy
2. Multicentered economy
3. Market economy
4. Substantivist economy

Question Number : 156 Question Id : 6232178845 Question Type : MCQ Option Shuffling : Yes Display Question Number : Yes
Single Line Question Option : No Option Orientation : Vertical

Wrong Marks : 0

The relationships formed on the basis of marriage

Options :

1. Affinal
2. Consanguinal
3. Blood
4. Close

Question Number : 157 Question Id : 6232178846 Question Type : MCQ Option Shuffling : Yes Display Question Number : Yes
Single Line Question Option : No Option Orientation : Vertical

Wrong Marks : 0

Arrange in sequence the elements contained in Malinowski's interpretation of institution.

Options :

1. Personnel → Charter → Function → Material apparatus → Activities.
2. Activities → Function → Personnel → Charter → Material apparatus.
3. Charter → Personnel → Material apparatus → Activities → Function.

4. Charter → Personnel → Activities → Function → Material apparatus

Question Number : 158 Question Id : 6232178847 Question Type : MCQ Option Shuffling : Yes Display Question Number : Yes
Single Line Question Option : No Option Orientation : Vertical

Wrong Marks : 0

Arrange in ascending order the sequence of the following social groups.

Options :

1. Tribe – Clan – Family – Lineage
2. Clan – Tribe – Lineage – Family
3. Lineage – Family – Clan – Tribe
4. Family – Lineage – Clan – Tribe

Question Number : 159 Question Id : 6232178848 Question Type : MCQ Option Shuffling : Yes Display Question Number : Yes
Single Line Question Option : No Option Orientation : Vertical

Wrong Marks : 0

Bimbetka in Madhya Pradesh belongs to

Options :

1. Microlithic
2. Paleolithic
3. Mesolithic
4. Chalcolithic

Question Number : 160 Question Id : 6232178849 Question Type : MCQ Option Shuffling : Yes Display Question Number : Yes
Single Line Question Option : No Option Orientation : Vertical

Wrong Marks : 0

The radiocarbon dating method is reliable method for dating remains upto

Options :

1. 150,000 years old

2. 200,000 years old

3. 50,000 years old

4. 500,000 years old

Question Number : 161 Question Id : 6232178850 Question Type : MCQ Option Shuffling : Yes Display Question Number : Yes
Single Line Question Option : No Option Orientation : Vertical

Wrong Marks : 0

Find out the correct match among the following

Options :

1. Twiggy -- Homo rudolfensis

2. Dmanin skulls -- Homo erectus eructus

3. Java Man -- Homo erectus georgicus

4. Peking man -- Homo erectus

Question Number : 162 Question Id : 6232178851 Question Type : MCQ Option Shuffling : Yes Display Question Number : Yes
Single Line Question Option : No Option Orientation : Vertical

Wrong Marks : 0

Which of the following books have been written/edited by Ruth Benedict.

a. Primitive Art

b. Patterns of Culture

c. The Chrysanthemum and the sword

d. Race, Science and Politics

Options :

1. a, b and c

2. b, c and d

3. Only b and c

4. Only a and b

Question Number : 163 Question Id : 6232178852 Question Type : MCQ Option Shuffling : Yes Display Question Number : Yes
Single Line Question Option : No Option Orientation : Vertical

Wrong Marks : 0

Who among the following is the proponent of cultural ecology?

Options :

1. Daryl Forde

2. Ralph Linton

3. Julian Steward

4. Clifford Geertz

Question Number : 164 Question Id : 6232178853 Question Type : MCQ Option Shuffling : Yes Display Question Number : Yes
Single Line Question Option : No Option Orientation : Vertical

Wrong Marks : 0

Biological characteristics distinguishing male from female is called

Options :

1. Heterosexuality

2. Gender

3. Sex

4. Homosexuality

Question Number : 165 Question Id : 6232178854 Question Type : MCQ Option Shuffling : Yes Display Question Number : Yes
Single Line Question Option : No Option Orientation : Vertical

Wrong Marks : 0

Cultural diffusion is based on

Options :

1. Culture traits
2. Culture change
3. Culture development
4. Civilization

Question Number : 166 Question Id : 6232178855 Question Type : MCQ Option Shuffling : Yes Display Question Number : Yes
Single Line Question Option : No Option Orientation : Vertical

Wrong Marks : 0

The most accepted theory of organic evolution

Options :

1. Natural selection Theory
2. Phase theory
3. Synthetic theory
4. Mutation theory

Question Number : 167 Question Id : 6232178856 Question Type : MCQ Option Shuffling : Yes Display Question Number : Yes
Single Line Question Option : No Option Orientation : Vertical

Wrong Marks : 0

At which point in history did Homo Neanderthalensis become extinct

Options :

1. 11,700 BP
2. 48,000 BP

3. 30,000 BP

4. 18,000 BP

Question Number : 168 Question Id : 6232178857 Question Type : MCQ Option Shuffling : Yes Display Question Number : Yes
Single Line Question Option : No Option Orientation : Vertical

Wrong Marks : 0

The process whereby people are socialized into and internalize the primary cultural values of their birth country

Options :

1. Acculturation

2. Enculturation

3. Adaptation

4. Assimilation

Question Number : 169 Question Id : 6232178858 Question Type : MCQ Option Shuffling : Yes Display Question Number : Yes
Single Line Question Option : No Option Orientation : Vertical

Wrong Marks : 0

Which one of the following is not true about the cause of divorce?

Options :

1. Social mobility

2. Urbanization

3. Ancestral property consideration

4. Personality characteristics

Question Number : 170 Question Id : 6232178859 Question Type : MCQ Option Shuffling : Yes Display Question Number : Yes
Single Line Question Option : No Option Orientation : Vertical

Wrong Marks : 0

Which of the following article in Indian Constitution is related to Panchayat raj?

Options :

1. Article 243
2. Article 324
3. Article 124
4. Article 73

Question Number : 171 Question Id : 6232178860 Question Type : MCQ Option Shuffling : Yes Display Question Number : Yes
Single Line Question Option : No Option Orientation : Vertical

Wrong Marks : 0

Which constitutional amendment has the provision of reservation of seats for SCs/STs in public services and legislatures until 2020

Options :

1. 96th amendment
2. 95th amendment
3. 89th amendment
4. 102nd amendment

Question Number : 172 Question Id : 6232178861 Question Type : MCQ Option Shuffling : Yes Display Question Number : Yes
Single Line Question Option : No Option Orientation : Vertical

Wrong Marks : 0

Therimorphism

Options :

1. Concepts of deities as animals
2. Gods are conceived as human forms

3. Imagining god as a combination of human and animal forms

4. Concepts of gods as plants

Question Number : 173 Question Id : 6232178862 Question Type : MCQ Option Shuffling : Yes Display Question Number : Yes
Single Line Question Option : No Option Orientation : Vertical

Wrong Marks : 0

Family level groups are called

Options :

1. Band

2. State

3. Chiefdoms

4. Tribes

Question Number : 174 Question Id : 6232178863 Question Type : MCQ Option Shuffling : Yes Display Question Number : Yes
Single Line Question Option : No Option Orientation : Vertical

Wrong Marks : 0

A man who has several wives

Options :

1. Polygyny

2. Polygamy

3. Polyandry

4. None of the other options

Question Number : 175 Question Id : 6232178864 Question Type : MCQ Option Shuffling : Yes Display Question Number : Yes
Single Line Question Option : No Option Orientation : Vertical

Wrong Marks : 0

Levirate

Options :

1. Marriage between a widow and her deceased husband's brother
2. Marriage of a man to the sister of his wife
3. Group marriage
4. Bigamy

Question Number : 176 Question Id : 6232178865 Question Type : MCQ Option Shuffling : Yes Display Question Number : Yes
Single Line Question Option : No Option Orientation : Vertical
Wrong Marks : 0

Who is not a prominent structural anthropologist?

Options :

1. Levi-Strauss
2. Rodney Needham
3. Edmund Leach
4. E.B. Tylor

Question Number : 177 Question Id : 6232178866 Question Type : MCQ Option Shuffling : Yes Display Question Number : Yes
Single Line Question Option : No Option Orientation : Vertical
Wrong Marks : 0

Hand axes and cleavers were characteristic tools of

Options :

1. Lower Palaeolithic age
2. Middle Palaeolithic
3. Upper Palaeolithic

Iron age

4.

Question Number : 178 Question Id : 6232178867 Question Type : MCQ Option Shuffling : Yes Display Question Number : Yes
Single Line Question Option : No Option Orientation : Vertical

Wrong Marks : 0

Mature phase of Harappan civilization is dated between

Options :

1. 3000BC to 2000 BC
2. 4000 BC to 3000 BC
3. 1500 BC to 1000 BC
4. 2600 BC to 1900 BC

Question Number : 179 Question Id : 6232178868 Question Type : MCQ Option Shuffling : Yes Display Question Number : Yes
Single Line Question Option : No Option Orientation : Vertical

Wrong Marks : 0

Olduvai George is located in

Options :

1. The great Rift valley
2. Ethiopia
3. Nigeria
4. Taginia

Question Number : 180 Question Id : 6232178869 Question Type : MCQ Option Shuffling : Yes Display Question Number : Yes
Single Line Question Option : No Option Orientation : Vertical

Wrong Marks : 0

The order primates includes about how many living species?

Options :

1. 10

2. 70

3. 190

4. 550