

Andhra Pradesh State Council of Higher Education

Question Paper Name: ADULT EDUCATION
Subject Name: ADULT EDUCATION
Creation Date: 2019-11-10 15:11:45
Duration: 180
Total Marks: 180
Display Marks: Yes
Share Answer Key With Delivery Engine: Yes

ADULT EDUCATION

Group Number : 1
Group Id : 62321748
Group Maximum Duration : 0
Group Minimum Duration : 180
Revisit allowed for view? : No
Revisit allowed for edit? : No
Break time: 0
Group Marks: 180
Revisit allowed for group Instructions? : Yes
Maximum Instruction Time: 0
Minimum Instruction Time: 0

Teaching and Research Aptitude

Section Id : 62321795
Section Number : 1
Section type : Online
Mandatory or Optional: Mandatory
Number of Questions: 82
Number of Questions to be attempted: 82
Section Marks: 90
Display Number Panel: Yes
Group All Questions: No

Sub-Section Number: 1
Sub-Section Id: 623217283
Question Shuffling Allowed : Yes

Question Number : 1 Question Id : 6232178508 Question Type : MCQ Option Shuffling : Yes Display Question Number : Yes
Single Line Question Option : No Option Orientation : Vertical

Wrong Marks : 0

The Teacher has been glorified by the phrase “Friend, Philosopher and guide” because

Options :

1. He is a great reformer of the society
2. He has to play all vital roles in the context of society.
3. He transmits the high value of humanity to students.
4. He is a great patriot

Question Number : 2 Question Id : 6232178509 Question Type : MCQ Option Shuffling : Yes Display Question Number : Yes
Single Line Question Option : No Option Orientation : Vertical

Wrong Marks : 0

What are the characteristics of continuous and comprehensive evaluation?

- a. It increases the workload on students by taking multiple tests.
- b. It replaces marks with grades.
- c. It evaluates every aspect of the student
- d. It helps in reducing examination phobia

Options :

1. (a), (b), (c) and (d)
2. (b) and (c)
3. (a), (b) and (c)
4. (b), (c) and (d)

Question Number : 3 Question Id : 6232178510 Question Type : MCQ Option Shuffling : Yes Display Question Number : Yes
Single Line Question Option : No Option Orientation : Vertical

Wrong Marks : 0

Before teaching a teacher should

Options :

1. Know the existing knowledge of his students and their background knowledge
2. be aware of the environmental variables acting on the mind of the pupils
3. be competent enough to arouse the curiosity of his pupils
4. All of the other options

Question Number : 4 Question Id : 6232178511 Question Type : MCQ Option Shuffling : Yes Display Question Number : Yes
Single Line Question Option : No Option Orientation : Vertical
Wrong Marks : 0

The major responsibility with which the school personnel have been entrusted is that

- Options :
1. It harmonizes the needs of the child and demands of the society for the mutual benefit
 2. It makes the child employable
 3. It prepares the school programme according to the need of the child.
 4. All of the other options

Question Number : 5 Question Id : 6232178512 Question Type : MCQ Option Shuffling : Yes Display Question Number : Yes
Single Line Question Option : No Option Orientation : Vertical
Wrong Marks : 0

Moral values can be effectively inculcated among the students when the teacher.

- Options :
1. Frequently talks about the values.
 2. Himself practices them
 3. Tells stories of great persons

Talks of gods and goddesses

4.

Question Number : 6 Question Id : 6232178513 Question Type : MCQ Option Shuffling : Yes Display Question Number : Yes
Single Line Question Option : No Option Orientation : Vertical

Wrong Marks : 0

Which of the following is not an example of learner centred method.

Options :

1. Closed ended method

1.

2. Discussion method

2.

3. Discovery based

3.

4. survey method

4.

Question Number : 7 Question Id : 6232178514 Question Type : MCQ Option Shuffling : Yes Display Question Number : Yes
Single Line Question Option : No Option Orientation : Vertical

Wrong Marks : 0

The highest level of cognitive domain as per revised blooms taxonomy

Options :

1. Applying

1.

2. Analysing

2.

3. Creating

3.

4. Evaluating

4.

Question Number : 8 Question Id : 6232178515 Question Type : MCQ Option Shuffling : Yes Display Question Number : Yes
Single Line Question Option : No Option Orientation : Vertical

Wrong Marks : 0

As per the UGC recommendations which of the following grade point is correct for B+ grade?

Options :

1. 9

2. 7

3. 8

4. 6

Question Number : 9 Question Id : 6232178516 Question Type : MCQ Option Shuffling : Yes Display Question Number : Yes
Single Line Question Option : No Option Orientation : Vertical

Wrong Marks : 0

The teacher's role at the higher educational level is to:

Options :

1. Provide information to students

2. Encourage healthy competition among students.

3. Help students to solve their personal problems.

4. Promote self – learning in students.

Question Number : 10 Question Id : 6232178517 Question Type : MCQ Option Shuffling : Yes Display Question Number : Yes
Single Line Question Option : No Option Orientation : Vertical

Wrong Marks : 0

In the process of conducting research “Formulation of Hypothesis” is followed by

Options :

1. Statement of objectives

2. Selection of research tools

3. Need for the study

4. Problem statement

Question Number : 11 Question Id : 6232178518 Question Type : MCQ Option Shuffling : Yes Display Question Number : Yes
Single Line Question Option : No Option Orientation : Vertical

Wrong Marks : 0

Which of the following variable cannot be expressed in quantitative terms?

Options :

1. Marital status

2. Income

3. Age

4. Experience

Question Number : 12 Question Id : 6232178519 Question Type : MCQ Option Shuffling : Yes Display Question Number : Yes
Single Line Question Option : No Option Orientation : Vertical

Wrong Marks : 0

The form that is filled by investigation to collect information from the respondent is called as

Options :

1. Schedule

2. Report

3. Response sheet

Field report

4.

Question Number : 13 Question Id : 6232178520 Question Type : MCQ Option Shuffling : Yes Display Question Number : Yes
Single Line Question Option : No Option Orientation : Vertical

Wrong Marks : 0

Studying an element and inferences made for the whole universe is called

Options :

1. Inductive logic

1.

2. Deductive logic

2.

3. Predictive logic

3.

4. No logic

4.

Question Number : 14 Question Id : 6232178521 Question Type : MCQ Option Shuffling : Yes Display Question Number : Yes
Single Line Question Option : No Option Orientation : Vertical

Wrong Marks : 0

The following is not a probabilistic sampling scheme.

Options :

1. Stratified random sample

1.

2. Cluster sample

2.

3. Systematic sample

3.

4. Judgement sample

4.

Question Number : 15 Question Id : 6232178522 Question Type : MCQ Option Shuffling : Yes Display Question Number : Yes
Single Line Question Option : No Option Orientation : Vertical

Wrong Marks : 0

The population census carried out by the Government of India is an example of

Options :

1. Exploratory Research
2. Action Research
3. Descriptive Research
4. Analytical Research

Question Number : 16 Question Id : 6232178523 Question Type : MCQ Option Shuffling : Yes Display Question Number : Yes
Single Line Question Option : No Option Orientation : Vertical

Wrong Marks : 0

The following is not a part of Research ethics.

Options :

1. Respect for self interest
2. Respect for Intellectual property
3. Respect for confidentiality
4. Respect to fact presentation

Question Number : 17 Question Id : 6232178524 Question Type : MCQ Option Shuffling : Yes Display Question Number : Yes
Single Line Question Option : No Option Orientation : Vertical

Wrong Marks : 0

Giving credit to individuals for their creative and intellectual works that has been utilised in the research study is called

Options :

1. Bibliography

2. Reference

3. Citation

4. End note

Question Number : 18 Question Id : 6232178525 Question Type : MCQ Option Shuffling : Yes Display Question Number : Yes
Single Line Question Option : No Option Orientation : Vertical

Wrong Marks : 0

Accepting null hypothesis when it is false is called

Options :

1. Type-I error

2. Type-II error

3. Sampling error

4. Parallax error

| | |
|------------------------------|-----------|
| Sub-Section Number: | 2 |
| Sub-Section Id: | 623217284 |
| Question Shuffling Allowed : | Yes |

Question Id : 6232178526 Question Type : COMPREHENSION Sub Question Shuffling Allowed : Yes Group Comprehension
Questions : No

Question Numbers : (19 to 27)

Question Label : Comprehension

Read the following passage and answer the question

We look down upon the insects as almost the lowest of living things, and yet these tiny things have learnt the art of co-operation and of sacrifice for the common good far better than man. Ever since I read of the White Ant and of its sacrifice for its comrades, I have developed a soft corner in my heart for it. If mutual co-operation and sacrifice for the good of society are the tests of civilization, we may say that the White Ant and the Ant are in this respect superior to man.

In one of our old Sanskrit books there is a verse which can be translated as follows: “for the family sacrifice the individual, for the community the family, for the country the community and for the soul the whole world”. What the soul is few of us can know or tell and each one of us can interpret it in a different way. But the lesson this Sanskrit verse teaches us is the same lesson of co-operation and sacrifice for the larger good. We in India had forgotten this sovereign path to real greatness for many a day, and so we had fallen. But again we seem to have glimpses of it, and all the country is astir. How wonderful it is to see men and women, and boys and girls, smilingly going ahead in India’s cause and not caring about any pain or suffering! Well may they smile and be glad, for the joy of serving in a great cause is theirs; and to those who are fortunate comes the joy of sacrifice also. Today we are trying to free India. This is a great thing. But even greater is the cause of humanity itself. And because we feel that our struggle is a part of the great human struggle to end suffering and misery, we can rejoice that we are doing our little bit to help the progress of the world.

Sub questions

Question Number : 19 Question Id : 6232178527 Question Type : MCQ Option Shuffling : Yes Display Question Number : Yes
Single Line Question Option : No Option Orientation : Vertical

Wrong Marks : 0

In which respect are the insects better than man?

Options :

1. More in number

1.

2. Sacrifice for the common good

2.

3. Less complex biological constitution

4. Smaller in size

4.

Question Number : 20 Question Id : 6232178528 Question Type : MCQ Option Shuffling : Yes Display Question Number : Yes
Single Line Question Option : No Option Orientation : Vertical

Wrong Marks : 0

What are the tests of civilization?

Options :

1. Living together and sharing food

1.

2. Devoid of wars

2.

3. Social etiquette

3.

4. Mutual co-operation and sacrifice

4.

Question Number : 21 Question Id : 6232178529 Question Type : MCQ Option Shuffling : Yes Display Question Number : Yes
Single Line Question Option : No Option Orientation : Vertical

Wrong Marks : 0

According to the Sanskrit verse, what should be sacrificed for the sake of the country?

Options :

1. The world

1.

2. The community

2.

3. The family

3.

4. The individual

4.

Question Number : 22 Question Id : 6232178530 Question Type : MCQ Option Shuffling : Yes Display Question Number : Yes
Single Line Question Option : No Option Orientation : Vertical

Wrong Marks : 0

Which concept of human existence can be interpreted in different ways?

Options :

1. The soul

2. The mind

3. The god

4. The life

Question Number : 23 Question Id : 6232178531 Question Type : MCQ Option Shuffling : Yes Display Question Number : Yes
Single Line Question Option : No Option Orientation : Vertical

Wrong Marks : 0

Why had the people of India fallen?

Options :

1. Imitation of western culture

2. Hundreds of years slavery

3. Forgotten the sovereign path

4. Lack of confidence in their culture

Question Number : 24 Question Id : 6232178532 Question Type : MCQ Option Shuffling : Yes Display Question Number : Yes
Single Line Question Option : No Option Orientation : Vertical

Wrong Marks : 0

How did the people of the country stand for India's cause?

Options :

1. Following the National leaders
2. Studying law abroad
3. Being religious
4. Taking pain and suffering in their stride

Question Number : 25 Question Id : 6232178533 Question Type : MCQ Option Shuffling : Yes Display Question Number : Yes
Single Line Question Option : No Option Orientation : Vertical
Wrong Marks : 0

Who were considered fortunate by the author?

Options :

1. The British
2. Freedom fighters
3. Non-Resident Indians
4. The rich of India

Question Number : 26 Question Id : 6232178534 Question Type : MCQ Option Shuffling : Yes Display Question Number : Yes
Single Line Question Option : No Option Orientation : Vertical
Wrong Marks : 0

What is greater than freeing India from the foreign rule?

Options :

1. Working for the cause of humanity
2. Preserving wild life

Balancing ecology

3.

Protecting the water bodies

4.

Question Number : 27 Question Id : 6232178535 Question Type : MCQ Option Shuffling : Yes Display Question Number : Yes
Single Line Question Option : No Option Orientation : Vertical

Wrong Marks : 0

What does taking up the cause of humanity lead to?

Options :

End of suffering and misery

1.

End of greed and desire

2.

Progress of the world

3.

End of poverty

4.

Sub-Section Number: 3
Sub-Section Id: 623217285
Question Shuffling Allowed : Yes

Question Number : 28 Question Id : 6232178536 Question Type : MCQ Option Shuffling : Yes Display Question Number : Yes
Single Line Question Option : No Option Orientation : Vertical

Wrong Marks : 0

An author communicating with a reader through a book is an example of _____.

Options :

No communication

1.

Interpersonal communication

2.

Group communication

3.

Mass communication

4.

Question Number : 29 Question Id : 6232178537 Question Type : MCQ Option Shuffling : Yes Display Question Number : Yes
Single Line Question Option : No Option Orientation : Vertical

Wrong Marks : 0

Differentiation between acceptance and non-acceptance of certain stimuli in classroom communication is the basis of

Options :

1. Selective attention

1.

2. Selective morality

2.

3. Selective expectation of performance

3.

4. Selective application to peer group.

4.

Question Number : 30 Question Id : 6232178538 Question Type : MCQ Option Shuffling : Yes Display Question Number : Yes
Single Line Question Option : No Option Orientation : Vertical

Wrong Marks : 0

Which of the following is NOT one of the primary functions of mass communication.

Options :

1. Correlation

1.

2. Cultural transmission

2.

3. Entertainment

3.

4. Immunization

4.

Question Number : 31 Question Id : 6232178539 Question Type : MCQ Option Shuffling : Yes Display Question Number : Yes
Single Line Question Option : No Option Orientation : Vertical

Wrong Marks : 0

The influence of a group on the attitude of an individual is generally treated in terms of the concept of

Options :

1. Psychological group
2. Physical group
3. Corporative group
4. Reference group

Question Number : 32 Question Id : 6232178540 Question Type : MCQ Option Shuffling : Yes Display Question Number : Yes
Single Line Question Option : No Option Orientation : Vertical

Wrong Marks : 0

Which of the following theories stress that mass media in a society is controlled by the state power?

Options :

1. Normative
2. Authoritarian
3. Libertarian
4. Social responsibility

Question Number : 33 Question Id : 6232178541 Question Type : MCQ Option Shuffling : Yes Display Question Number : Yes
Single Line Question Option : No Option Orientation : Vertical

Wrong Marks : 0

Positive classroom communication leads to

Options :

1. coercion

2. submission

3. confrontation

4. persuasion

Question Number : 34 Question Id : 6232178542 Question Type : MCQ Option Shuffling : Yes Display Question Number : Yes
Single Line Question Option : No Option Orientation : Vertical

Wrong Marks : 0

Deductive communication is

Options :

1. Individual

2. Inter – personal

3. Organizational

4. Relational

Question Number : 35 Question Id : 6232178543 Question Type : MCQ Option Shuffling : Yes Display Question Number : Yes
Single Line Question Option : No Option Orientation : Vertical

Wrong Marks : 0

Which is the essential component of communication?

Options :

1. Understanding

2. Medium

3. Thoughts

Intention

4.

Question Number : 36 Question Id : 6232178544 Question Type : MCQ Option Shuffling : Yes Display Question Number : Yes
Single Line Question Option : No Option Orientation : Vertical

Wrong Marks : 0

Match the following

- | | | |
|-------------------|---|------------------------------|
| A) Pictures | – | 1) High order skills |
| B) high skills | – | 2) Visual communication |
| C) Hums | – | 3) Speech art |
| D) Long Distances | – | 4) Public telephone networks |

Options :

1. A-2 B-3 C-1 D-4

2. A-3 B-2 C-1 D-4

3. A-4 B-2 C-1 D-3

4. A-2 B-1 C-3 D-4

Question Number : 37 Question Id : 6232178545 Question Type : MCQ Option Shuffling : Yes Display Question Number : Yes
Single Line Question Option : No Option Orientation : Vertical

Wrong Marks : 0

The missing number in the sequence of numbers is

4, 5, 9, 18, 34, _____, 95

Options :

1. 43

2. 59

3. 67

4. 54

Question Number : 38 Question Id : 6232178546 Question Type : MCQ Option Shuffling : Yes Display Question Number : Yes
Single Line Question Option : No Option Orientation : Vertical

Wrong Marks : 0

The missing term in the following sequence is

ABC, BDF, _____, DHL

Options :

1. DJO

2. CFI

3. DKL

4. DKN

Question Number : 39 Question Id : 6232178547 Question Type : MCQ Option Shuffling : Yes Display Question Number : Yes
Single Line Question Option : No Option Orientation : Vertical

Wrong Marks : 0

If the numerator of a fraction is increased by 140% and the denominator is increased by

200%, the resultant fraction is $\frac{1}{2}$, then the original fraction is

Options :

1. $\frac{5}{19}$

2. $\frac{5}{9}$

$$\frac{5}{8}$$

3.

$$\frac{3}{4}$$

4.

Question Number : 40 Question Id : 6232178548 Question Type : MCQ Option Shuffling : Yes Display Question Number : Yes
Single Line Question Option : No Option Orientation : Vertical

Wrong Marks : 0

A person lost 20% by selling an article for 700 rupees. What percent shall he gain by selling it for 1200 rupees?

Options :

$$25$$

1.

$$37$$

2.

$$37\frac{1}{7}$$

3.

$$40$$

4.

Question Number : 41 Question Id : 6232178549 Question Type : MCQ Option Shuffling : Yes Display Question Number : Yes
Single Line Question Option : No Option Orientation : Vertical

Wrong Marks : 0

A business man allows a discount of 10% on the marked price of an article. Then how much percentage, above the cost price, the article be marked to make a profit of 35%?

Options :

$$40$$

1.

$$48$$

2.

$$55$$

3.

Question Number : 42 Question Id : 6232178550 Question Type : MCQ Option Shuffling : Yes Display Question Number : Yes
Single Line Question Option : No Option Orientation : Vertical

Wrong Marks : 0

A man travels from the city A to the city B by a car with an average speed of 96 kmph and returns from B to A by the same car with an average speed of 32 kmph. Then the average speed of the car for the entire journey is _____ kmph.

Options :

1. 16

2. 48

3. 64

4. 84

Question Number : 43 Question Id : 6232178551 Question Type : MCQ Option Shuffling : Yes Display Question Number : Yes
Single Line Question Option : No Option Orientation : Vertical

Wrong Marks : 0

In a certain language TABLE is code as UACME, then the code word for CHAIR is

Options :

1. DLATS

2. BLAIQ

3. DHAIS

4. DIBJS

Question Number : 44 Question Id : 6232178552 Question Type : MCQ Option Shuffling : Yes Display Question Number : Yes
Single Line Question Option : No Option Orientation : Vertical

Wrong Marks : 0

If $x:y:z = 2:3:5$, then $\frac{x}{y} : \frac{y}{z} : \frac{z}{x} =$

Options :

1. 20:18:75

2. 6:15:13

3. 10:13:15

4. 6:15:10

Question Number : 45 Question Id : 6232178553 Question Type : MCQ Option Shuffling : Yes Display Question Number : Yes
Single Line Question Option : No Option Orientation : Vertical

Wrong Marks : 0

If an amount X invested with a compound interest rate of 10% per annum become Rs 1,665/- in 3 years. Then the invested amount X is

Options :

1. 3,500

2. 5,555

3. 5,000

4. 6,500

Sub-Section Number: 4
Sub-Section Id: 623217286
Question Shuffling Allowed : No

Question Number : 46 Question Id : 6232178554 Question Type : MCQ Option Shuffling : Yes Display Question Number : Yes
Single Line Question Option : No Option Orientation : Vertical

Wrong Marks : 0

Raju is two seats to Ramu's left. Ranga is three seats to Raju's right. Rao is two seats to Raju's left. Krishna is six seats to Sita's right. Sarma is six seats to Krishna's right. Rao is not sitting next to Raju. Who sits one seat to Sarma's left?

Options :

1. Rao
2. Krishna
3. Raju
4. Sita

Question Number : 47 Question Id : 6232178555 Question Type : MCQ Option Shuffling : Yes Display Question Number : Yes
Single Line Question Option : No Option Orientation : Vertical

Wrong Marks : 0

Two statements are given with two conclusions I and II. Which logical conclusion can be drawn out as per the statements?

Statements: All windows are needles

Some trees are windows

Conclusion: I. Some trees are needles

II. Some trees are not needles

Options :

1. Only conclusion I follows
2. Only conclusion II follows
3. Both conclusions I and II followed
4. Both conclusions I and II are not followed

Question Number : 48 Question Id : 6232178556 Question Type : MCQ Option Shuffling : Yes Display Question Number : Yes
Single Line Question Option : No Option Orientation : Vertical

Wrong Marks : 0

The following series follows a pattern. Identify the pattern and fill the blank.

6, 14, 36, 98, _____.

Options :

1. 276

2. 275

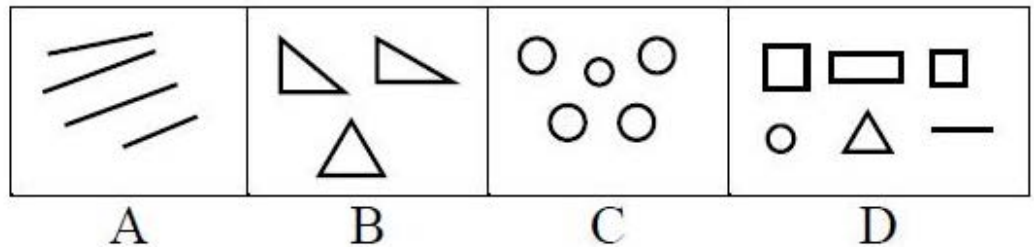
3. 220

4. 274

Question Number : 49 Question Id : 6232178557 Question Type : MCQ Option Shuffling : Yes Display Question Number : Yes
Single Line Question Option : No Option Orientation : Vertical

Wrong Marks : 0

Choose the figure which is different from other.



Options :

1. C

2. B

3. D

4. A

Question Number : 50 Question Id : 6232178558 Question Type : MCQ Option Shuffling : Yes Display Question Number : Yes
Single Line Question Option : No Option Orientation : Vertical

Wrong Marks : 0

A is B's sister. C is B's mother. E is D's mother. Then how A is related to D?

Options :

1. Sister
2. Grand Mother
3. Daughter
4. Grand Daughter

Question Number : 51 Question Id : 6232178559 Question Type : MCQ Option Shuffling : Yes Display Question Number : Yes
Single Line Question Option : No Option Orientation : Vertical

Wrong Marks : 0

Arrange the given words in a meaningful sequence and choose an alternative.

- i) Site
- ii) Plan
- iii) Rent
- iv) Money
- v) Building
- vi) Construction

Options :

1. i, ii, iii, vi, v, iv
2. ii, iii, vi, v, i, iv
3. iii, iv, ii, vi, v, i
4. iv, i, ii, vi, v, iii

Question Number : 52 Question Id : 6232178560 Question Type : MCQ Option Shuffling : Yes Display Question Number : Yes
Single Line Question Option : No Option Orientation : Vertical

Wrong Marks : 0

Consider the statements “The hill is fiery. Because the hill is smoky. Whatever has fire has smoke”. In this statement, “The hill has smoke which is invariably associated with fire” is

Options :

1. Pratijna
2. Hetu
3. Udaharna
4. Upanaya

Question Number : 53 Question Id : 6232178561 Question Type : MCQ Option Shuffling : Yes Display Question Number : Yes
Single Line Question Option : No Option Orientation : Vertical

Wrong Marks : 0

Anumāna or inference is defined as

Options :

1. Instrument of judgment
2. Instrument of perception
3. Instrument of fact
4. Instrument of cause

Question Number : 54 Question Id : 6232178562 Question Type : MCQ Option Shuffling : Yes Display Question Number : Yes
Single Line Question Option : No Option Orientation : Vertical

Wrong Marks : 0

The science and study of pramanas is called

Options :

1. Nyaya

2. Advaita

3. Mimamsa

4. Vedanta

Question Number : 55 Question Id : 6232178563 Question Type : MCQ Option Shuffling : Yes Display Question Number : Yes
Single Line Question Option : No Option Orientation : Vertical

Wrong Marks : 0

Study the following tabular statement and answer the question below.

The proportion of male students and the proportion of girl students in a school are given in the following tabular statement. The school has a total of 1600 students and 80% of them are in secondary section and the rest are equally divided between the classes 11 and 12.

| Class | Male | Girl |
|-------------------|------|------|
| 11 | 0.50 | 0.50 |
| 12 | 0.60 | 0.40 |
| Secondary section | 0.45 | 0.55 |

The number of girl students in the class 12 is

Options :

1. 32

2. 160

3. 64

4. 80

Question Number : 56 Question Id : 6232178564 Question Type : MCQ Option Shuffling : Yes Display Question Number : Yes
Single Line Question Option : No Option Orientation : Vertical

Wrong Marks : 0

Study the following tabular statement and answer the question below.

The proportion of male students and the proportion of girl students in a school are given in the following tabular statement. The school has a total of 1600 students and 80% of them are in secondary section and the rest are equally divided between the classes 11 and 12.

| Class | Male | Girl |
|-------------------|------|------|
| 11 | 0.50 | 0.50 |
| 12 | 0.60 | 0.40 |
| Secondary section | 0.45 | 0.55 |

The total number of male students in the school is

Options :

1. 700

2.

2. 650

3.

3. 848

4.

4. 752

Question Number : 57 Question Id : 6232178565 Question Type : MCQ Option Shuffling : Yes Display Question Number : Yes Single Line Question Option : No Option Orientation : Vertical

Wrong Marks : 0

Study the following tabular statement and answer the question below.

The proportion of male students and the proportion of girl students in a school are given in the following tabular statement. The school has a total of 1600 students and 80% of them are in secondary section and the rest are equally divided between the classes 11 and 12.

| Class | Male | Girl |
|-------------------|------|------|
| 11 | 0.50 | 0.50 |
| 12 | 0.60 | 0.40 |
| Secondary section | 0.45 | 0.55 |

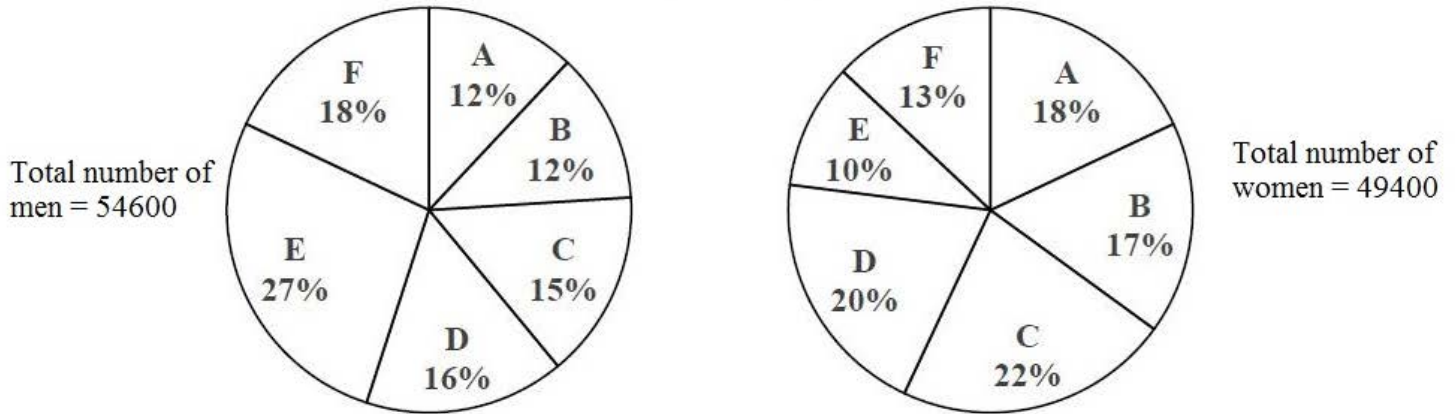
The percentage of male students in the secondary section

Options :

1. 36
2. 42
3. 45
4. 48

Question Number : 58 Question Id : 6232178566 Question Type : MCQ Option Shuffling : Yes Display Question Number : Yes
 Single Line Question Option : No Option Orientation : Vertical
 Wrong Marks : 0

The following pie chart shows the distribution of men and women in 6 different towns. Based on this information answer the question given below.



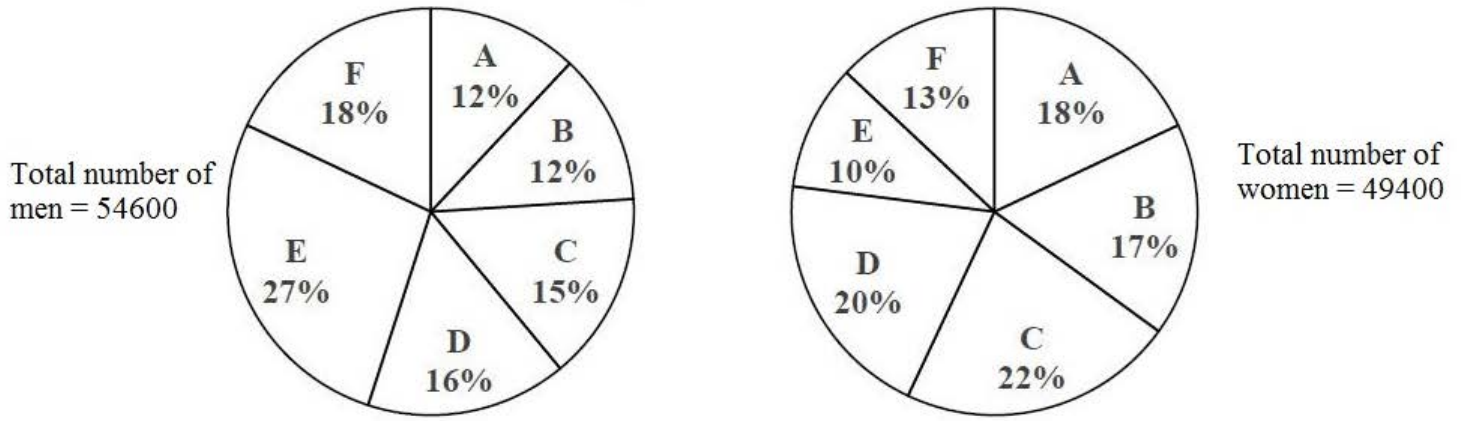
Total number of men and women in the town C is

Options :

1. 19000
2. 19058
3. 20463
4. 21252

Question Number : 59 Question Id : 6232178567 Question Type : MCQ Option Shuffling : Yes Display Question Number : Yes
 Single Line Question Option : No Option Orientation : Vertical
 Wrong Marks : 0

The following pie chart show the distribution of men and women in 6 different towns. Based on this information answer the question given below.



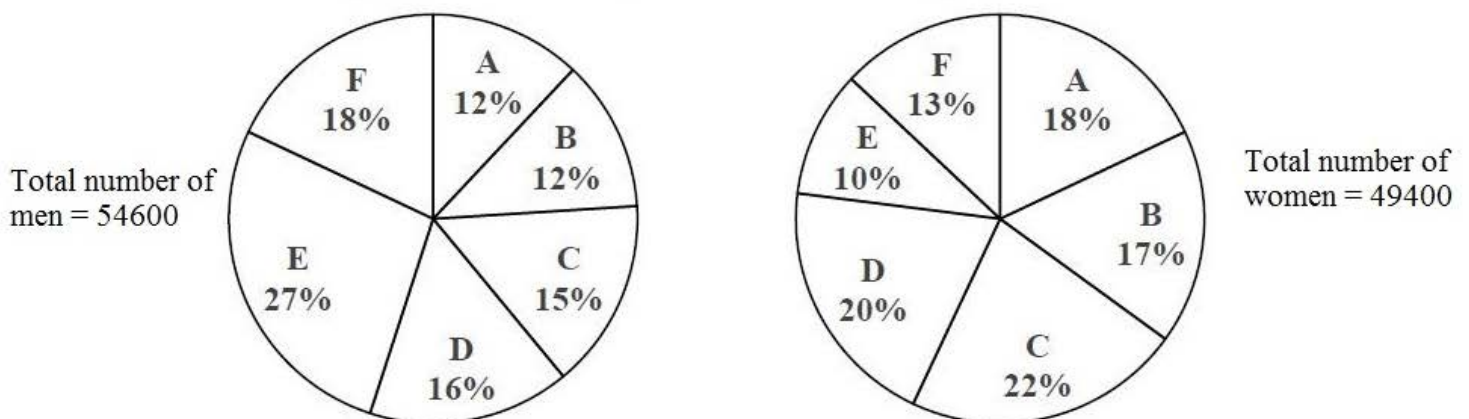
The ratio between the number of men and women in the town D is

Options :

1. 1092:1235
2. 348:177
3. 2:3
4. 12:13

Question Number : 60 Question Id : 6232178568 Question Type : MCQ Option Shuffling : Yes Display Question Number : Yes Single Line Question Option : No Option Orientation : Vertical Wrong Marks : 0

The following pie chart show the distribution of men and women in 6 different towns. Based on this information answer the question given below.



The total number of women in the towns B, D and F is

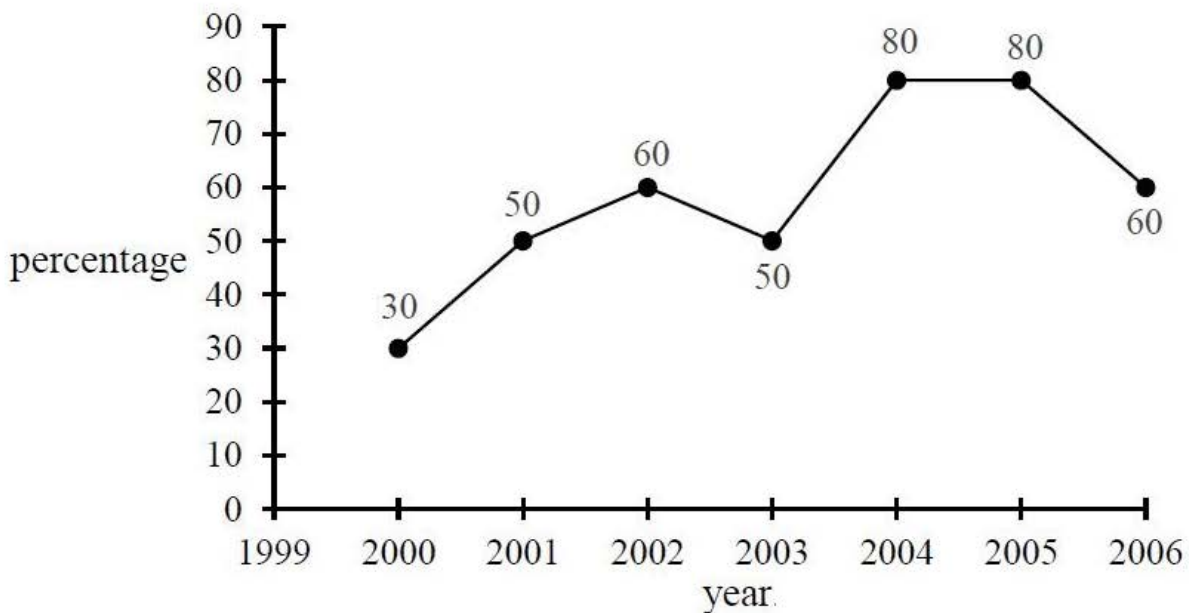
Options :

1. 24000
2. 24363
3. 24700
4. 29560

Question Number : 61 Question Id : 6232178569 Question Type : MCQ Option Shuffling : Yes Display Question Number : Yes Single Line Question Option : No Option Orientation : Vertical

Wrong Marks : 0

The following line graph represents the percentage of the number of qualified candidates in an examination out of the total number of candidates appeared in that examination for the corresponding year. Based on the information for the years 2000 to 2006, answer the question below.



If the number of qualified candidates in 2004 was 42400, then the number of candidates appeared for the examination in 2004 was

Options :

1. 50000
2. 53250

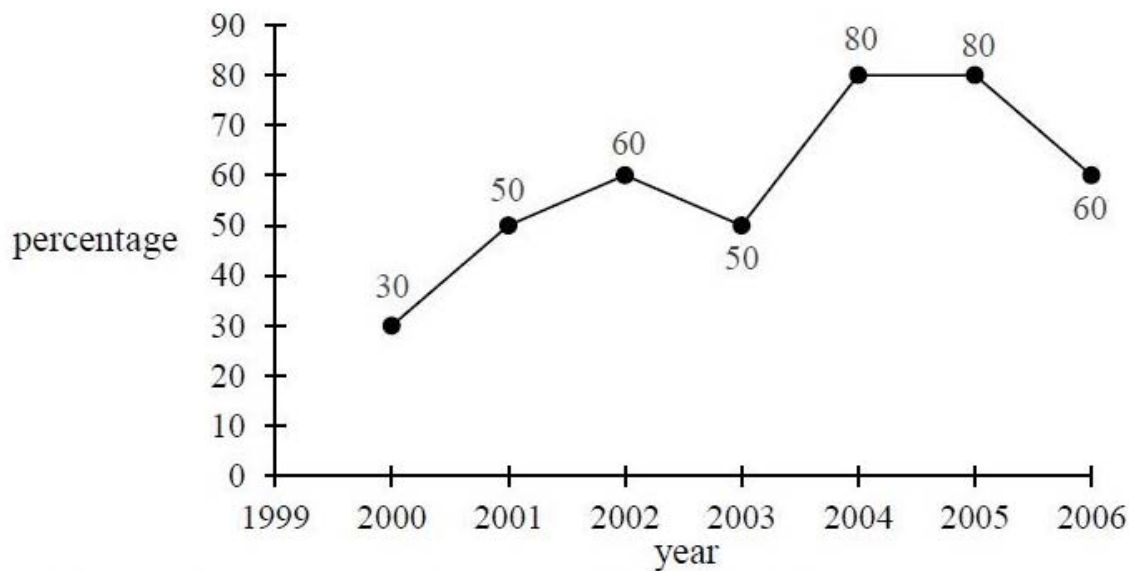
3. 53000

4. 48250

Question Number : 62 Question Id : 6232178570 Question Type : MCQ Option Shuffling : Yes Display Question Number : Yes
Single Line Question Option : No Option Orientation : Vertical

Wrong Marks : 0

The following line graph represents the percentage of the number of qualified candidates in an examination out of the total number of candidates appeared in that examination for the corresponding year. Based on the information for the years 2000 to 2006, answer the question below.



If the total number of qualified candidates in 2005 and 2006 together was 33500 and the number of candidates appeared in 2005 was 26500, then the number of candidates appeared for the examination in 2006 was

Options :

1. 20500

2. 20000

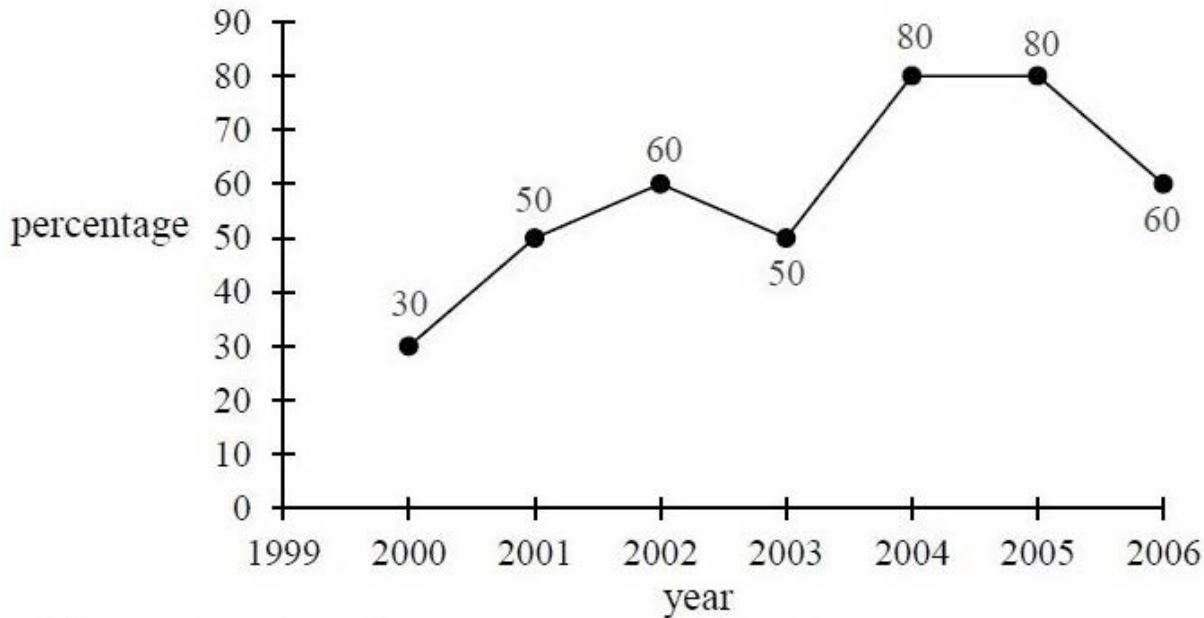
3. 22500

4. 24050

Question Number : 63 Question Id : 6232178571 Question Type : MCQ Option Shuffling : Yes Display Question Number : Yes
Single Line Question Option : No Option Orientation : Vertical

Wrong Marks : 0

The following line graph represents the percentage of the number of qualified candidates in an examination out of the total number of candidates appeared in that examination for the corresponding year. Based on the information for the years 2000 to 2006, answer the question below.



If the total number of candidates appeared for the years 2001 and 2003 put together was 20000 and the number of qualified candidates in 2001 was 7550, then the number of qualified candidates in 2003 was

Options :

1. 2400
2. 2450
3. 4900
4. 7550

Sub-Section Number: 5
Sub-Section Id: 623217287
Question Shuffling Allowed : Yes

Question Number : 64 Question Id : 6232178572 Question Type : MCQ Option Shuffling : Yes Display Question Number : Yes
Single Line Question Option : No Option Orientation : Vertical

Wrong Marks : 0

The full form of USB

Options :

1. University Security Block
2. United Serial Bus
3. Universal Serial Bus
4. Ultra Security Block

Question Number : 65 Question Id : 6232178573 Question Type : MCQ Option Shuffling : Yes Display Question Number : Yes
Single Line Question Option : No Option Orientation : Vertical

Wrong Marks : 0

An unsolicited e-mail message sent to many recipients at once is a

Options :

1. Worm
2. Virus
3. Threat
4. Spam

Question Number : 66 Question Id : 6232178574 Question Type : MCQ Option Shuffling : Yes Display Question Number : Yes
Single Line Question Option : No Option Orientation : Vertical

Wrong Marks : 0

The full form of MOOC is

Options :

1. Massive Open Online Course

2. Massive Online Open Course

3. Massive Original Online Course

4. Massive Oriented Online Course

Question Number : 67 Question Id : 6232178575 Question Type : MCQ Option Shuffling : Yes Display Question Number : Yes
Single Line Question Option : No Option Orientation : Vertical

Wrong Marks : 0

TCP/IP is necessary if one is to connect to the

Options :

1. Phone lines

2. LAN

3. Internet

4. Server

Question Number : 68 Question Id : 6232178576 Question Type : MCQ Option Shuffling : Yes Display Question Number : Yes
Single Line Question Option : No Option Orientation : Vertical

Wrong Marks : 0

“SWAYAM” platform is developed by

Options :

1. MHRD with the help of Microsoft

2. AICTE with the help of Microsoft

3. MHRD and AICTE with the help of Microsoft

4. UGC with the help of Microsoft

Question Number : 69 Question Id : 6232178577 Question Type : MCQ Option Shuffling : Yes Display Question Number : Yes
Single Line Question Option : No Option Orientation : Vertical

Wrong Marks : 0

The digital repository of Indian Electronic Theses and Dissertations “Shodhganga” set up by

Options :

1. INFLIBNET Centre

2. NPTEL

3. UGC

4. AICTE

Question Number : 70 Question Id : 6232178578 Question Type : MCQ Option Shuffling : Yes Display Question Number : Yes
Single Line Question Option : No Option Orientation : Vertical

Wrong Marks : 0

The following is not the benefit of ICT Governance.

Options :

1. Increase transparency

2. Higher availability of public domain information

3. Increase efficiency due to connectivity

4. Reduce security of information

Question Number : 71 Question Id : 6232178579 Question Type : MCQ Option Shuffling : Yes Display Question Number : Yes
Single Line Question Option : No Option Orientation : Vertical

Wrong Marks : 0

Which of the following enable one to send the same letter to different persons in
MSWORD

Options :

1. Mail join

2. Mail copy

3. Mail insert

4. Mail merge

Question Number : 72 Question Id : 6232178580 Question Type : MCQ Option Shuffling : Yes Display Question Number : Yes
Single Line Question Option : No Option Orientation : Vertical

Wrong Marks : 0

Which of the following is not a/an image/graphic format?

Options :

1. PNG

2. GIF

3. BMP

4. GUI

Question Number : 73 Question Id : 6232178581 Question Type : MCQ Option Shuffling : Yes Display Question Number : Yes
Single Line Question Option : No Option Orientation : Vertical

Wrong Marks : 0

Which of the following statements is related to sustainability

Options :

1. It refers to a process or state that can be maintained indefinitely.
2. Natural resources must be used in ways that create ecological debts.
3. Consumption of the total natural capital stock.
4. None of the other options

Question Number : 74 Question Id : 6232178582 Question Type : MCQ Option Shuffling : Yes Display Question Number : Yes
Single Line Question Option : No Option Orientation : Vertical

Wrong Marks : 0

Contaminated substances which leak into ground and carried by filtration into ground water is known as

Options :

1. Air pollution
2. Water pollution
3. Noise pollution
4. Land contamination

Question Number : 75 Question Id : 6232178583 Question Type : MCQ Option Shuffling : Yes Display Question Number : Yes
Single Line Question Option : No Option Orientation : Vertical

Wrong Marks : 0

When was the problem of ozone depletion first identified?

Options :

1. 1970
2. 1971

1972

3.

1973

4.

Question Number : 76 Question Id : 6232178584 Question Type : MCQ Option Shuffling : Yes Display Question Number : Yes
Single Line Question Option : No Option Orientation : Vertical

Wrong Marks : 0

Why is the runoff from fertilized agricultural fields, even if free of pesticides, often harmful to the ecosystems of temperate lakes?

Options :

The fertilizer promotes the growth of fish to the point where they cannot find enough food to eat.

1.

The runoff causes a surface algal bloom, which reduces the penetration of light into the water reducing photosynthesis and thereby which reducing the amount of oxygen in the water.

2.

Fertilizer runoff promotes antibiotic resistance

3.

The runoff raises the levels of inorganic nutrients in the surface waters to levels that are toxic for algae and other lake organisms.

4.

Question Number : 77 Question Id : 6232178585 Question Type : MCQ Option Shuffling : Yes Display Question Number : Yes
Single Line Question Option : No Option Orientation : Vertical

Wrong Marks : 0

Sulphur - rich fossil fuels _____.

Options :

Cause less harm to the environment than other fossil fuels

1.

Contribute to global cooling

2.

3. Deplete the ozone layer

4. Contribute to acid rain

Question Number : 78 Question Id : 6232178586 Question Type : MCQ Option Shuffling : Yes Display Question Number : Yes
Single Line Question Option : No Option Orientation : Vertical

Wrong Marks : 0

The most nuclear fuel used in the world is _____.

Options :

1. Thorium-232

2. Uranium-238

3. Uranium-235

4. Plutonium-239

Question Number : 79 Question Id : 6232178587 Question Type : MCQ Option Shuffling : Yes Display Question Number : Yes
Single Line Question Option : No Option Orientation : Vertical

Wrong Marks : 0

Boiling water reactor and pressurised water reactors are

Options :

1. Solar reactor

2. OTEC

3. Biogas reactor

4. Nuclear reactor

Question Number : 80 Question Id : 6232178588 Question Type : MCQ Option Shuffling : Yes Display Question Number : Yes
Single Line Question Option : No Option Orientation : Vertical

Wrong Marks : 0

Which is known as seismic wave?

Options :

1. Tsunami
2. Hurricane
3. Typhoon
4. El Nino

Question Number : 81 Question Id : 6232178589 Question Type : MCQ Option Shuffling : Yes Display Question Number : Yes
Single Line Question Option : No Option Orientation : Vertical

Wrong Marks : 0

With minor exception, which of the following has been phased out completely globally?

Options :

1. Carbon dioxide
2. Carbon monoxide
3. Chlorofluorocarbons
4. Nitrogen dioxide

Question Number : 82 Question Id : 6232178590 Question Type : MCQ Option Shuffling : Yes Display Question Number : Yes
Single Line Question Option : No Option Orientation : Vertical

Wrong Marks : 0

In which medium were instructions given in the Buddhist system of education.

Options :

1. Sanskrit

2. Hindi

3. Pali

4. None of the other options

Question Number : 83 Question Id : 6232178591 Question Type : MCQ Option Shuffling : Yes Display Question Number : Yes
Single Line Question Option : No Option Orientation : Vertical

Wrong Marks : 0

Prime Minister Research Fellowship is for students pursuing Ph.D programme in _____ organization.

Options :

1. State and Central universities

2. Central Universities, IISc, IITs, NITs

3. IISc, IITs, NITs, IISERS, IITs, State and Central Universities

4. IITs and IISC

Question Number : 84 Question Id : 6232178592 Question Type : MCQ Option Shuffling : Yes Display Question Number : Yes
Single Line Question Option : No Option Orientation : Vertical

Wrong Marks : 0

The University Grants Commission was established with which of the following aims?

a) Promotion of research and development in higher education

b) Identifying and sustaining institutions of potential learning

c) Capacity building of teachers

d) Providing autonomy to each and every higher educational institutions in India

Options :

1. (a), (b), (c) and (d)

2. (a), (b), (c)

3. (b), (c), (d)

4. (a), (b), (d)

Question Number : 85 Question Id : 6232178593 Question Type : MCQ Option Shuffling : Yes Display Question Number : Yes
Single Line Question Option : No Option Orientation : Vertical
Wrong Marks : 0

The first Open University in India was set up in the state of

Options :

1. Andhra Pradesh

2. Delhi

3. Tamil Nadu

4. Kerala

Question Number : 86 Question Id : 6232178594 Question Type : MCQ Option Shuffling : Yes Display Question Number : Yes
Single Line Question Option : No Option Orientation : Vertical
Wrong Marks : 0

The study of interaction between living and non-living organisms and environment is called

Options :

1. Ecosystem

2. Ecology

3. Phytogeography

4. Phytosociology

Question Number : 87 Question Id : 6232178595 Question Type : MCQ Option Shuffling : Yes Display Question Number : Yes
Single Line Question Option : No Option Orientation : Vertical

Wrong Marks : 0

Kothari Commission report was submitted to the Government in the year

Options :

1. 1960

2. 1966

3. 1968

4. 1970

Question Number : 88 Question Id : 6232178596 Question Type : MCQ Option Shuffling : Yes Display Question Number : Yes
Single Line Question Option : No Option Orientation : Vertical

Wrong Marks : 0

Common Wealth of learning focussed on promoting

Options :

1. economic development by providing education and teaching skills.

2. knowledge

3. personality development

communication skills.

4.

Question Number : 89 Question Id : 6232178597 Question Type : MCQ Option Shuffling : Yes Display Question Number : Yes
Single Line Question Option : No Option Orientation : Vertical

Wrong Marks : 0

Under CBCS, which of the following is not regarded as a “programme”?

Options :

Certificate

1.

Diploma

2.

Degree

3.

None of the other options

4.

Question Number : 90 Question Id : 6232178598 Question Type : MCQ Option Shuffling : Yes Display Question Number : Yes
Single Line Question Option : No Option Orientation : Vertical

Wrong Marks : 0

Extension of inference is called

Options :

Observation

1.

Conclusions

2.

Analysis

3.

Hypothesis

4.

| | |
|---|-----------|
| Section Number : | 2 |
| Section type : | Online |
| Mandatory or Optional: | Mandatory |
| Number of Questions: | 90 |
| Number of Questions to be attempted: | 90 |
| Section Marks: | 90 |
| Display Number Panel: | Yes |
| Group All Questions: | No |

| | |
|-------------------------------------|-----------|
| Sub-Section Number: | 1 |
| Sub-Section Id: | 623217288 |
| Question Shuffling Allowed : | Yes |

**Question Number : 91 Question Id : 6232178599 Question Type : MCQ Option Shuffling : Yes Display Question Number : Yes
Single Line Question Option : No Option Orientation : Vertical**

Wrong Marks : 0

Formative Evaluation refers to

Options :

1. **Evaluation of the learning outcomes**
2. **Evaluation at the end of the programme**
3. **Evaluation conducted before launching the programme**
4. **Evaluation at the initial stage of the programme**

**Question Number : 92 Question Id : 6232178600 Question Type : MCQ Option Shuffling : Yes Display Question Number : Yes
Single Line Question Option : No Option Orientation : Vertical**

Wrong Marks : 0

The first TLC was launched at

Options :

1. **Tiruchy**
2. **Tirupati**
3. **Kottayam**

4. Kadapa

Question Number : 93 Question Id : 6232178601 Question Type : MCQ Option Shuffling : Yes Display Question Number : Yes
Single Line Question Option : No Option Orientation : Vertical

Wrong Marks : 0

IPCL refers to

Options :

1. Improved Pace and Content of Learning
2. Improved Pace and Curricular Learning
3. Improved Pace of Content Learning
4. Improved Pace and Cognitive Learning

Question Number : 94 Question Id : 6232178602 Question Type : MCQ Option Shuffling : Yes Display Question Number : Yes
Single Line Question Option : No Option Orientation : Vertical

Wrong Marks : 0

NLM focuses on

Options :

1. School Education
2. Teacher Education
3. Higher Education
4. Adult Education

Question Number : 95 Question Id : 6232178603 Question Type : MCQ Option Shuffling : Yes Display Question Number : Yes
Single Line Question Option : No Option Orientation : Vertical

Wrong Marks : 0

Curriculum designing for adult learner should not be based on

Options :

1. Learning needs
2. Lifelong learning
3. Improving living standard
4. Venue of learning

Question Number : 96 Question Id : 6232178604 Question Type : MCQ Option Shuffling : Yes Display Question Number : Yes
Single Line Question Option : No Option Orientation : Vertical

Wrong Marks : 0

Folk High School concept was developed by

Options :

1. Grundtvig
2. Maslow
3. Bhola
4. Jarvis

Question Number : 97 Question Id : 6232178605 Question Type : MCQ Option Shuffling : Yes Display Question Number : Yes
Single Line Question Option : No Option Orientation : Vertical

Wrong Marks : 0

Author of the book "De-schooling Society"

Options :

1. Paulo Friere
2. S B Merriam

3. M S Knowles

4. Ivan Illich

Question Number : 98 Question Id : 6232178606 Question Type : MCQ Option Shuffling : Yes Display Question Number : Yes
Single Line Question Option : No Option Orientation : Vertical

Wrong Marks : 0

The three 'R's includes

Options :

1. Reading, Drawing and Painting

2. Reading, Writing and Arithmetic

3. Reading, Writing and Corresponding

4. Reading, Writing and Listening

Question Number : 99 Question Id : 6232178607 Question Type : MCQ Option Shuffling : Yes Display Question Number : Yes
Single Line Question Option : No Option Orientation : Vertical

Wrong Marks : 0

The term 'andragogy' was coined by

Options :

1. Plato

2. Alexander Kapp

3. Paulo Friere

4. Ivan Illich

Question Number : 100 Question Id : 6232178608 Question Type : MCQ Option Shuffling : Yes Display Question Number : Yes
Single Line Question Option : No Option Orientation : Vertical

Wrong Marks : 0

“Equivalency Programme’ is part of which National Programme?

Options :

1. Total Literacy Programme
2. Post Literacy Programme
3. Continuing Education Programme
4. Adult Literacy Programme

Question Number : 101 Question Id : 6232178609 Question Type : MCQ Option Shuffling : Yes Display Question Number : Yes
Single Line Question Option : No Option Orientation : Vertical

Wrong Marks : 0

The National Legal Literacy day is celebrated on

Options :

1. 9th November
2. 8th November
3. 10th November
4. 5th November

Question Number : 102 Question Id : 6232178610 Question Type : MCQ Option Shuffling : Yes Display Question Number : Yes
Single Line Question Option : No Option Orientation : Vertical

Wrong Marks : 0

NEEM stands for

Options :

1. National Extension Education Movement

2. National Elementary Education Mission
3. National Elementary Education Movement
4. None of the other options

Question Number : 103 Question Id : 6232178611 Question Type : MCQ Option Shuffling : Yes Display Question Number : Yes
Single Line Question Option : No Option Orientation : Vertical

Wrong Marks : 0

Who distinguished 'andragogy' with 'pedagogy'?

Options :

1. Lindeman
2. Malcolm Knowles
3. Alexander Kapp
4. Richard A. Swanson

Question Number : 104 Question Id : 6232178612 Question Type : MCQ Option Shuffling : Yes Display Question Number : Yes
Single Line Question Option : No Option Orientation : Vertical

Wrong Marks : 0

Who is identified as the champion of 'Radical Adult Education'?

Options :

1. Maslow
2. Peter Jarvis
3. Paulo Friere

4. John Dewey

Question Number : 105 Question Id : 6232178613 Question Type : MCQ Option Shuffling : Yes Display Question Number : Yes
Single Line Question Option : No Option Orientation : Vertical
Wrong Marks : 0

Andragogy refers to

Options :

1. Science of teaching children
2. Arts and science of helping adults to learn
3. Science of behavioral study of adult
4. None of the other options

Question Number : 106 Question Id : 6232178614 Question Type : MCQ Option Shuffling : Yes Display Question Number : Yes
Single Line Question Option : No Option Orientation : Vertical
Wrong Marks : 0

Inability to read, write and with simple calculations of a person is enumerated as

Options :

1. Literate
2. Uneducated
3. Semi-literate
4. Illiterate

Question Number : 107 Question Id : 6232178615 Question Type : MCQ Option Shuffling : Yes Display Question Number : Yes
Single Line Question Option : No Option Orientation : Vertical
Wrong Marks : 0

The Distance Mode of School Education is provided by

Options :

1. IGNOU

2. DEC

3. NIOS

4. UGC

Question Number : 108 Question Id : 6232178616 Question Type : MCQ Option Shuffling : Yes Display Question Number : Yes
Single Line Question Option : No Option Orientation : Vertical
Wrong Marks : 0

The expansion of SRC is

Options :

1. State Reorganisation Committee

2. State Reorganisation Commission

3. State Research Centre

4. State Resource Centre

Question Number : 109 Question Id : 6232178617 Question Type : MCQ Option Shuffling : Yes Display Question Number : Yes
Single Line Question Option : No Option Orientation : Vertical
Wrong Marks : 0

_____ is the audio-visual aid.

Options :

1. Poster

2. Radio

3. Film

4. None of the other options

Question Number : 110 Question Id : 6232178618 Question Type : MCQ Option Shuffling : Yes Display Question Number : Yes
Single Line Question Option : No Option Orientation : Vertical

Wrong Marks : 0

The first district was declared as totally literate district in India

Options :

1. Elluru

2. Kottayam

3. Ernakulam

4. Kanyakumari

Question Number : 111 Question Id : 6232178619 Question Type : MCQ Option Shuffling : Yes Display Question Number : Yes
Single Line Question Option : No Option Orientation : Vertical

Wrong Marks : 0

Maulana Azad, the first Education Minister of India, re-named the scheme of

Adult Education as

Options :

1. Further Education

2. Social Education

3. Non-formal Education

4. Out of School Education

Question Number : 112 Question Id : 6232178620 Question Type : MCQ Option Shuffling : Yes Display Question Number : Yes
Single Line Question Option : No Option Orientation : Vertical

Wrong Marks : 0

The major function of the SRC is

Options :

1. Teaching & Research
2. Distributing Funds to NGOs
3. Training & Materials Development
4. None of the other options

Question Number : 113 Question Id : 6232178621 Question Type : MCQ Option Shuffling : Yes Display Question Number : Yes
Single Line Question Option : No Option Orientation : Vertical

Wrong Marks : 0

Concurrent evaluation will be taken up only

Options :

1. Before launching the programme
2. During the programme
3. End of the programme
4. None of the other options

Question Number : 114 Question Id : 6232178622 Question Type : MCQ Option Shuffling : Yes Display Question Number : Yes
Single Line Question Option : No Option Orientation : Vertical

Wrong Marks : 0

“Education for All” is sponsored by

Options :

1. UNESCO
2. UNO

3. UNICEF

4. ILO

Question Number : 115 Question Id : 6232178623 Question Type : MCQ Option Shuffling : Yes Display Question Number : Yes
Single Line Question Option : No Option Orientation : Vertical

Wrong Marks : 0

LEAP stands for

Options :

1. Lifelong Education and Awareness Project

2. Lifelong Education and Action Programme

3. Lifelong Education and Action Project

4. Lifelong Education and Awareness Programme

Question Number : 116 Question Id : 6232178624 Question Type : MCQ Option Shuffling : Yes Display Question Number : Yes
Single Line Question Option : No Option Orientation : Vertical

Wrong Marks : 0

Which one of the following principles is not related to effective communication?

Options :

1. Clarity

2. Attention

3. Co-ordination

4. Hierarchy

Question Number : 117 Question Id : 6232178625 Question Type : MCQ Option Shuffling : Yes Display Question Number : Yes
Single Line Question Option : No Option Orientation : Vertical

Wrong Marks : 0

Which one of the following states registered negative population growth between 2001 and 2011?

Options :

1. Tamil Nadu
2. Goa
3. Karnataka
4. Nagaland

Question Number : 118 Question Id : 6232178626 Question Type : MCQ Option Shuffling : Yes Display Question Number : Yes
Single Line Question Option : No Option Orientation : Vertical

Wrong Marks : 0

Each one teach one was a part of the scheme:

Options :

1. National Adult Education Programme (NAEP)
2. Area Development Approach (ADA)
3. Mass Programme for Functional Literacy (MPFL)
4. None of the other options

Question Number : 119 Question Id : 6232178627 Question Type : MCQ Option Shuffling : Yes Display Question Number : Yes
Single Line Question Option : No Option Orientation : Vertical

Wrong Marks : 0

The medium that has widest reach in India is

Options :

1. Print

2. Radio

3. Television

4. Internet

Question Number : 120 Question Id : 6232178628 Question Type : MCQ Option Shuffling : Yes Display Question Number : Yes
Single Line Question Option : No Option Orientation : Vertical
Wrong Marks : 0

Basic education has another name

Options :

1. Non-formal education

2. Vocational education

3. Nai-Talim education

4. Informal education

Question Number : 121 Question Id : 6232178629 Question Type : MCQ Option Shuffling : Yes Display Question Number : Yes
Single Line Question Option : No Option Orientation : Vertical
Wrong Marks : 0

Which of the following books written by Paulo Friere?

Options :

1. Decentralized society

2. De-schooling society

3. Demoralized society

4. Democratic society

Question Number : 122 Question Id : 6232178630 Question Type : MCQ Option Shuffling : Yes Display Question Number : Yes
Single Line Question Option : No Option Orientation : Vertical

Wrong Marks : 0

32. Which of the following centre provides training and reading materials for literacy and continuing education programmes?

Options :

1. UGC

2. DCC

3. TLC

4. SRC

Question Number : 123 Question Id : 6232178631 Question Type : MCQ Option Shuffling : Yes Display Question Number : Yes
Single Line Question Option : No Option Orientation : Vertical

Wrong Marks : 0

Purpose of training is

Options :

1. To develop human qualities

2. To develop reading habits

3. To develop healthy habits

4. To develops writing habits

Question Number : 124 Question Id : 6232178632 Question Type : MCQ Option Shuffling : Yes Display Question Number : Yes
Single Line Question Option : No Option Orientation : Vertical

Wrong Marks : 0

Meaning of motivation is

Options :

1. This is a process
2. This is a result
3. This is a need
4. This is a search

Question Number : 125 Question Id : 6232178633 Question Type : MCQ Option Shuffling : Yes Display Question Number : Yes
Single Line Question Option : No Option Orientation : Vertical

Wrong Marks : 0

Vocational education focused on

Options :

1. Knowledge improvement
2. Life status improvement
3. Skill improvement
4. Health improvement

Question Number : 126 Question Id : 6232178634 Question Type : MCQ Option Shuffling : Yes Display Question Number : Yes
Single Line Question Option : No Option Orientation : Vertical

Wrong Marks : 0

Pedagogy is a teaching technique to

Options :

1. Teach adults
2. Teach women

3. Teach children

4. Teach teachers

Question Number : 127 Question Id : 6232178635 Question Type : MCQ Option Shuffling : Yes Display Question Number : Yes
Single Line Question Option : No Option Orientation : Vertical

Wrong Marks : 0

Third important dimension of higher education is

Options :

1. Sports

2. Research

3. Extension

4. Teaching

Question Number : 128 Question Id : 6232178636 Question Type : MCQ Option Shuffling : Yes Display Question Number : Yes
Single Line Question Option : No Option Orientation : Vertical

Wrong Marks : 0

ZSS stands for

Options :

1. Zila Sewa Samiti

2. Zila Sadbhawna Samiti

3. Zila Samanwaya Samiti

4. Zila Saksharta Samiti

Question Number : 129 Question Id : 6232178637 Question Type : MCQ Option Shuffling : Yes Display Question Number : Yes
Single Line Question Option : No Option Orientation : Vertical

Wrong Marks : 0

According to 2011 Census, the literacy rate of India is now

Options :

1. 62 percent
2. 74 percent
3. 80 percent
4. 82 percent

Question Number : 130 Question Id : 6232178638 Question Type : MCQ Option Shuffling : Yes Display Question Number : Yes
Single Line Question Option : No Option Orientation : Vertical

Wrong Marks : 0

Evaluation is an important process of making

Options :

1. Personal Assessment
2. Decision about achievements
3. Expectations and Effectiveness
4. None of the other options

Question Number : 131 Question Id : 6232178639 Question Type : MCQ Option Shuffling : Yes Display Question Number : Yes
Single Line Question Option : No Option Orientation : Vertical

Wrong Marks : 0

Expansion of NFE is

Options :

1. Non-Form Education
2. No-Formal Education
3. Non-Farmers Education

4. Non-Formal Education

Question Number : 132 Question Id : 6232178640 Question Type : MCQ Option Shuffling : Yes Display Question Number : Yes
Single Line Question Option : No Option Orientation : Vertical

Wrong Marks : 0

Lifelong learning is to

Options :

1. Pursue in the early stage of life
2. Peruse throughout all stages of life
3. Pursue in the later stage of life
4. None of the other options

Question Number : 133 Question Id : 6232178641 Question Type : MCQ Option Shuffling : Yes Display Question Number : Yes
Single Line Question Option : No Option Orientation : Vertical

Wrong Marks : 0

Shramik Vidyapeeth has been renamed as

Options :

1. Jan Shikshan Sansthan
2. Life Long Education
3. Total Literacy Programme
4. None of the other options

Question Number : 134 Question Id : 6232178642 Question Type : MCQ Option Shuffling : Yes Display Question Number : Yes
Single Line Question Option : No Option Orientation : Vertical

Wrong Marks : 0

Directorate of Adult Education (DAE) has been functioning under the Control of

Options :

1. SJ & E Ministry

2. HRD Ministry

3. RD Ministry

4. Food Processing Ministry

Question Number : 135 Question Id : 6232178643 Question Type : MCQ Option Shuffling : Yes Display Question Number : Yes
Single Line Question Option : No Option Orientation : Vertical

Wrong Marks : 0

National Adult Education Programme focused on the age group of

Options :

1. 15-35 years

2. 15-45 years

3. 15-60 years

4. 60 – 100 years

Question Number : 136 Question Id : 6232178644 Question Type : MCQ Option Shuffling : Yes Display Question Number : Yes
Single Line Question Option : No Option Orientation : Vertical

Wrong Marks : 0

Which one of the following is not a method of teaching adult illiterate?

Options :

1. Emphatic

2. Synthetic

3. Analytic

4. Didactic

Question Number : 137 Question Id : 6232178645 Question Type : MCQ Option Shuffling : Yes Display Question Number : Yes
Single Line Question Option : No Option Orientation : Vertical

Wrong Marks : 0

Identify the leader associated with Adult Education?

Options :

1. Julius Nyerere

2. Robert Mugabe

3. Bill Clinton

4. A.B. Vajpayee

Question Number : 138 Question Id : 6232178646 Question Type : MCQ Option Shuffling : Yes Display Question Number : Yes
Single Line Question Option : No Option Orientation : Vertical

Wrong Marks : 0

HIV Stands for

Options :

1. Human Immune Virus

2. Human Immunodeficiency Virus

3. Human Internal Virus

4. None of the other options

Question Number : 139 Question Id : 6232178647 Question Type : MCQ Option Shuffling : Yes Display Question Number : Yes
Single Line Question Option : No Option Orientation : Vertical

Wrong Marks : 0

Learning society is an educational philosophy advocated by the

Options :

1. OECD
2. ILO
3. WHO
4. UN

Question Number : 140 Question Id : 6232178648 Question Type : MCQ Option Shuffling : Yes Display Question Number : Yes
Single Line Question Option : No Option Orientation : Vertical

Wrong Marks : 0

Creation of the National Research Foundation is mooted by

Options :

1. Kothari Commission
2. Ramamurthy committee
3. National Policy on education 1986
4. Draft New Educational policy 2019

Question Number : 141 Question Id : 6232178649 Question Type : MCQ Option Shuffling : Yes Display Question Number : Yes
Single Line Question Option : No Option Orientation : Vertical

Wrong Marks : 0

A learning community is

Options :

1. a group of people who share common academic goals and attitudes
2. a group of people learning together

3. A Community with group learning

4. Common learning in the community

Question Number : 142 Question Id : 6232178650 Question Type : MCQ Option Shuffling : Yes Display Question Number : Yes
Single Line Question Option : No Option Orientation : Vertical

Wrong Marks : 0

NAPLAN stands for

Options :

1. National Assessment Program – Literacy and Numeracy

2. National Assessment plan for literacy and numeracy

3. National plan

4. National assessment planning

Question Number : 143 Question Id : 6232178651 Question Type : MCQ Option Shuffling : Yes Display Question Number : Yes
Single Line Question Option : No Option Orientation : Vertical

Wrong Marks : 0

Component of the human resource development

Options :

1. Literacy

2. Food

3. Land

4. Power

Question Number : 144 Question Id : 6232178652 Question Type : MCQ Option Shuffling : Yes Display Question Number : Yes
Single Line Question Option : No Option Orientation : Vertical

Wrong Marks : 0

Basic Unit of the community

Options :

1. Housing
2. Marriage
3. Health
4. Family

Question Number : 145 Question Id : 6232178653 Question Type : MCQ Option Shuffling : Yes Display Question Number : Yes
Single Line Question Option : No Option Orientation : Vertical

Wrong Marks : 0

NRHM focuses on

Options :

1. Health
2. Nature
3. Housing
4. Marriage

Question Number : 146 Question Id : 6232178654 Question Type : MCQ Option Shuffling : Yes Display Question Number : Yes
Single Line Question Option : No Option Orientation : Vertical

Wrong Marks : 0

Sample is a unit

Options :

1. Population
2. Literacy

3. Housing

4. None of the other options

Question Number : 147 Question Id : 6232178655 Question Type : MCQ Option Shuffling : Yes Display Question Number : Yes
Single Line Question Option : No Option Orientation : Vertical

Wrong Marks : 0

What is the meaning of 'Translation Pools' ?

Options :

1. Details about the names of translation experts

2. Details about the addresses of the translators

3. Agency of the names of translation experts

4. None of the other options

Question Number : 148 Question Id : 6232178656 Question Type : MCQ Option Shuffling : Yes Display Question Number : Yes
Single Line Question Option : No Option Orientation : Vertical

Wrong Marks : 0

The transmission of receiver's reaction back to the sender is known as

Options :

1. Noise

2. Feedback

3. Medium

4. Source

Question Number : 149 Question Id : 6232178657 Question Type : MCQ Option Shuffling : Yes Display Question Number : Yes
Single Line Question Option : No Option Orientation : Vertical

Wrong Marks : 0

Which of the following is not a “Graphic representation” ?

Options :

1. Pie Chart
2. Bar Chart
3. Table
4. Histogram

Question Number : 150 Question Id : 6232178658 Question Type : MCQ Option Shuffling : Yes Display Question Number : Yes
Single Line Question Option : No Option Orientation : Vertical

Wrong Marks : 0

“Controlled Group” is a term used in..... .

Options :

1. Survey research
2. Historical research
3. Experimental research
4. Descriptive research

Question Number : 151 Question Id : 6232178659 Question Type : MCQ Option Shuffling : Yes Display Question Number : Yes
Single Line Question Option : No Option Orientation : Vertical

Wrong Marks : 0

Questionnaire is a :

Options :

1. Research method

2. Measurement technique

3. Tool for data collection

4. Data analysis technique

Question Number : 152 Question Id : 6232178660 Question Type : MCQ Option Shuffling : Yes Display Question Number : Yes
Single Line Question Option : No Option Orientation : Vertical

Wrong Marks : 0

A periodical evaluation of an employee is done through..... .

Options :

1. Job rotation

2. Performance appraisal

3. Refresher course

4. Work guide

Question Number : 153 Question Id : 6232178661 Question Type : MCQ Option Shuffling : Yes Display Question Number : Yes
Single Line Question Option : No Option Orientation : Vertical

Wrong Marks : 0

An appropriate source to find out descriptive information is.....

Options :

1. Bibliography

2. Directory

3. Encyclopedia

4. Dictionary

Question Number : 154 Question Id : 6232178662 Question Type : MCQ Option Shuffling : Yes Display Question Number : Yes
Single Line Question Option : No Option Orientation : Vertical

Wrong Marks : 0

Conference proceedings are considered as.....documents.

Options :

1. Conventional

2. Primary

3. Secondary

4. Tertiary

Question Number : 155 Question Id : 6232178663 Question Type : MCQ Option Shuffling : Yes Display Question Number : Yes
Single Line Question Option : No Option Orientation : Vertical

Wrong Marks : 0

RSS feed is a tool of :

Options :

1. Graphic design

2. Web 1.0

3. Web 2.0

4. Architecture

Question Number : 156 Question Id : 6232178664 Question Type : MCQ Option Shuffling : Yes Display Question Number : Yes
Single Line Question Option : No Option Orientation : Vertical

Wrong Marks : 0

In the process of conducting research ‘Formulation of Hypothesis’ is followed by

Options :

1. Statement of Objectives

2. Analysis of Data

3. Selection of Research Tools

4. Collection of Data

Question Number : 157 Question Id : 6232178665 Question Type : MCQ Option Shuffling : Yes Display Question Number : Yes
Single Line Question Option : No Option Orientation : Vertical

Wrong Marks : 0

A research paper is a brief report of research work based on

Options :

1. Primary Data only

2. Secondary Data only

3. Both Primary and Secondary Data

4. None of the other options

Question Number : 158 Question Id : 6232178666 Question Type : MCQ Option Shuffling : Yes Display Question Number : Yes
Single Line Question Option : No Option Orientation : Vertical

Wrong Marks : 0

Action research means

Options :

1. A longitudinal research

2. An applied research

3. A research initiated to solve an immediate problem

4. A research with socioeconomic objective

Question Number : 159 Question Id : 6232178667 Question Type : MCQ Option Shuffling : Yes Display Question Number : Yes
Single Line Question Option : No Option Orientation : Vertical

Wrong Marks : 0

Which of the following is the first step in starting the research process

Options :

1. Searching sources of information to locate problem.
2. Survey of related literature
3. Identification of problem
4. Searching for solutions to the problem

Question Number : 160 Question Id : 6232178668 Question Type : MCQ Option Shuffling : Yes Display Question Number : Yes
Single Line Question Option : No Option Orientation : Vertical

Wrong Marks : 0

Research is

Options :

1. Searching again and again
2. Finding solution to any problem
3. Working in a scientific way to search for truth of any problem
4. None of the other options

Question Number : 161 Question Id : 6232178669 Question Type : MCQ Option Shuffling : Yes Display Question Number : Yes
Single Line Question Option : No Option Orientation : Vertical

Wrong Marks : 0

Make in India, was launched by the Government of India on

Options :

1. 25 September 2014

2. 8th September 2014

3. 2nd October 2014

4. 26th August 2014

Question Number : 162 Question Id : 6232178670 Question Type : MCQ Option Shuffling : Yes Display Question Number : Yes
Single Line Question Option : No Option Orientation : Vertical
Wrong Marks : 0

SEWA is a

Options :

1. Non Governmental agency

2. A government Body

3. Autonomous body

4. A progamme

Question Number : 163 Question Id : 6232178671 Question Type : MCQ Option Shuffling : Yes Display Question Number : Yes
Single Line Question Option : No Option Orientation : Vertical
Wrong Marks : 0

Shramic Vidyapeeth

Options :

1. Promotes welfare of the workers

2. Promotes vocational training

3. An educational institute

Agency to Protect the Labor rights

4.

Question Number : 164 Question Id : 6232178672 Question Type : MCQ Option Shuffling : Yes Display Question Number : Yes
Single Line Question Option : No Option Orientation : Vertical

Wrong Marks : 0

Start up India is aimed to promote

Options :

1. Entrepreneurship

1.

2. Human resources

2.

3. Training

3.

4. Funding to the industry

4.

Question Number : 165 Question Id : 6232178673 Question Type : MCQ Option Shuffling : Yes Display Question Number : Yes
Single Line Question Option : No Option Orientation : Vertical

Wrong Marks : 0

Pradhan Mantri Kaushal Vikas Yojana (PMKVY) is aimed at

Options :

1. Skilled Manpower

1.

2. Empowerment among rural population

2.

3. Welfare of the aged

3.

4. Clean and green

4.

Question Number : 166 Question Id : 6232178674 Question Type : MCQ Option Shuffling : Yes Display Question Number : Yes
Single Line Question Option : No Option Orientation : Vertical

Wrong Marks : 0

The National Skill Development Mission was launched by the Hon'ble Prime Minister on

Options :

1. 15th July 2015
2. 1st Nov.2015
3. 15th June 2015
4. 1st July 2015

Question Number : 167 Question Id : 6232178675 Question Type : MCQ Option Shuffling : Yes Display Question Number : Yes Single Line Question Option : No Option Orientation : Vertical

Wrong Marks : 0

The World Youth Skills Day is celebrated on

Options :

1. 15th Jan 2015
2. 16th May 2015
3. 2nd Oct 2015
4. 15th July 2015

Question Number : 168 Question Id : 6232178676 Question Type : MCQ Option Shuffling : Yes Display Question Number : Yes Single Line Question Option : No Option Orientation : Vertical

Wrong Marks : 0

Community Development through Polytechnic Scheme is programme of

Options :

1. Ministry of Skill Development and Entrepreneurship
2. Ministry of Social justice and Empowerment
3. Ministry of Labour and Employment
4. Ministry of Human Resource Development

Question Number : 169 Question Id : 6232178677 Question Type : MCQ Option Shuffling : Yes Display Question Number : Yes
Single Line Question Option : No Option Orientation : Vertical

Wrong Marks : 0

The UN has endorsed the Millennium Development Goals in the year

Options :

1. 2000
2. 2001
3. 2002
4. 1999

Question Number : 170 Question Id : 6232178678 Question Type : MCQ Option Shuffling : Yes Display Question Number : Yes
Single Line Question Option : No Option Orientation : Vertical

Wrong Marks : 0

80. The U N General Assembly set 17 Goals as Sustainable Development Goals (SDGs) to attain by

Options :

1. 2020
2. 2025

2035

3.

2030

4.

Question Number : 171 Question Id : 6232178679 Question Type : MCQ Option Shuffling : Yes Display Question Number : Yes
Single Line Question Option : No Option Orientation : Vertical

Wrong Marks : 0

Improved Pace and Content of Learning (IPCL) strategy was adopted during

Options :

1. NAEP

1.

2. FFLP

2.

3. TLC

3.

4. MPFL

4.

Question Number : 172 Question Id : 6232178680 Question Type : MCQ Option Shuffling : Yes Display Question Number : Yes
Single Line Question Option : No Option Orientation : Vertical

Wrong Marks : 0

Post literacy Programme is a part of

Options :

1. UGC

1.

2. NCERT

2.

3. NLM

3.

4. NEE

4.

Question Number : 173 Question Id : 6232178681 Question Type : MCQ Option Shuffling : Yes Display Question Number : Yes
Single Line Question Option : No Option Orientation : Vertical

Wrong Marks : 0

Deductive approach to instruction is

Options :

1. Teacher Centered
2. College oriented
3. School oriented
4. Student centered

Question Number : 174 Question Id : 6232178682 Question Type : MCQ Option Shuffling : Yes Display Question Number : Yes
Single Line Question Option : No Option Orientation : Vertical

Wrong Marks : 0

Third Dimension of the University

Options :

1. Teaching
2. Training
3. Research
4. Extension

Question Number : 175 Question Id : 6232178683 Question Type : MCQ Option Shuffling : Yes Display Question Number : Yes
Single Line Question Option : No Option Orientation : Vertical

Wrong Marks : 0

Jan Shikshan Sansthan was established to provide

Options :

1. School Education
2. Vocational Education

3. Health education

4. None of the other options

Question Number : 176 Question Id : 6232178684 Question Type : MCQ Option Shuffling : Yes Display Question Number : Yes
Single Line Question Option : No Option Orientation : Vertical

Wrong Marks : 0

NIOS is associated with the process of

Options :

1. Learner assessment

2. Teacher assessment

3. School environment

4. Institutional climate

Question Number : 177 Question Id : 6232178685 Question Type : MCQ Option Shuffling : Yes Display Question Number : Yes
Single Line Question Option : No Option Orientation : Vertical

Wrong Marks : 0

PPP stands for

Options :

1. Public Private Partnership

2. Public Private Programme

3. Private Pupil Progress

4. Pupil Private Property

Question Number : 178 Question Id : 6232178686 Question Type : MCQ Option Shuffling : Yes Display Question Number : Yes
Single Line Question Option : No Option Orientation : Vertical

Wrong Marks : 0

The Web bases Planning and Monitoring Information System (WePMIS)

was created during the implementation of the

Options :

1. Saakshar Bharat
2. Total literacy Campaign
3. National Adult Education Programme
4. Mass programme for Functional literacy

Question Number : 179 Question Id : 6232178687 Question Type : MCQ Option Shuffling : Yes Display Question Number : Yes
Single Line Question Option : No Option Orientation : Vertical

Wrong Marks : 0

The Saakshar Bharat Mission was launched by the then Prime minister on

Options :

1. 8th September 2009
2. 2nd October 2009
3. 15th August 2019
4. 26th January 2009

Question Number : 180 Question Id : 6232178688 Question Type : MCQ Option Shuffling : Yes Display Question Number : Yes
Single Line Question Option : No Option Orientation : Vertical

Wrong Marks : 0

The Kerala State was declared as Total Literacy State in

Options :

1. April, 1991

2. February, 1991

3. August, 1990

4. September, 1990